

General Description

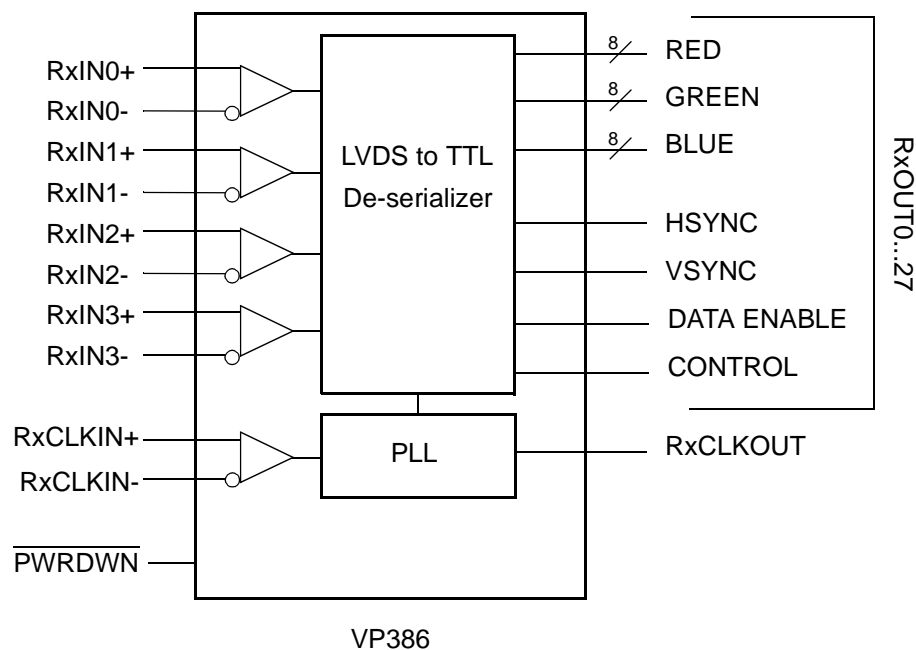
The VP386 is an ideal LVDS receiver that converts 4-pair LVDS data streams into parallel 28 bits of CMOS/TTL data with bandwidth up to 2.8 Gbps throughput or 350 Mbytes per second.

This chip is an ideal means to solve EMI and cable size problems associated with wide, high-speed TTL interfaces through very low-swing LVDS signals.

Features

- Wide clock frequency range from 20 MHz to 100 MHz
- Pin compatible with the National DS90CF386, Thine THC63LVDF84, TISN65LVDS94
- Converts 4-pair LVDS data streams into parallel 28 bits of CMOS/TTL data
- Fully spread spectrum compatible
- LVDS voltage swing of 350 mV for low EMI
- On-chip PLL requires no external components
- Low-power CMOS design
- Falling edge clock triggered outputs
- Power-down control function
- Compatible with TIA/EIA-644 LVDS standards
- Packaged in a 56-pin TSSOP (Pb free available)

Block Diagram



Pin Assignment

| | | | | | |
|----------|--------------------------|----|----|--------------------------|---------|
| RxOUT22 | <input type="checkbox"/> | 1 | 56 | <input type="checkbox"/> | VCC |
| RxOUT23 | <input type="checkbox"/> | 2 | 55 | <input type="checkbox"/> | RxOUT21 |
| RxOUT24 | <input type="checkbox"/> | 3 | 54 | <input type="checkbox"/> | RxOUT20 |
| GND | <input type="checkbox"/> | 4 | 53 | <input type="checkbox"/> | RxOUT19 |
| RxOUT25 | <input type="checkbox"/> | 5 | 52 | <input type="checkbox"/> | GND |
| RxOUT26 | <input type="checkbox"/> | 6 | 51 | <input type="checkbox"/> | RxOUT18 |
| RxOUT27 | <input type="checkbox"/> | 7 | 50 | <input type="checkbox"/> | RxOUT17 |
| LVDS_GND | <input type="checkbox"/> | 8 | 49 | <input type="checkbox"/> | RxOUT16 |
| RxIN0- | <input type="checkbox"/> | 9 | 48 | <input type="checkbox"/> | VCC |
| RxIN0+ | <input type="checkbox"/> | 10 | 47 | <input type="checkbox"/> | RxOUT15 |
| RxIN1- | <input type="checkbox"/> | 11 | 46 | <input type="checkbox"/> | RxOUT14 |
| RxIN1+ | <input type="checkbox"/> | 12 | 45 | <input type="checkbox"/> | RxOUT13 |
| LVDS_VCC | <input type="checkbox"/> | 13 | 44 | <input type="checkbox"/> | GND |
| LVDS_GND | <input type="checkbox"/> | 14 | 43 | <input type="checkbox"/> | RxOUT12 |
| RxIN2- | <input type="checkbox"/> | 15 | 42 | <input type="checkbox"/> | RxOUT11 |
| RxIN2+ | <input type="checkbox"/> | 16 | 41 | <input type="checkbox"/> | RxOUT10 |
| RxCLKIN- | <input type="checkbox"/> | 17 | 40 | <input type="checkbox"/> | VCC |
| RxICLKN+ | <input type="checkbox"/> | 18 | 39 | <input type="checkbox"/> | RxOUT9 |
| RxIN3- | <input type="checkbox"/> | 19 | 38 | <input type="checkbox"/> | RxOUT8 |
| RxIN3+ | <input type="checkbox"/> | 20 | 37 | <input type="checkbox"/> | RxOUT7 |
| LVDS_GND | <input type="checkbox"/> | 21 | 36 | <input type="checkbox"/> | GND |
| PLL_GND | <input type="checkbox"/> | 22 | 35 | <input type="checkbox"/> | RxOUT6 |
| PLL_VCC | <input type="checkbox"/> | 23 | 34 | <input type="checkbox"/> | RxOUT5 |
| PLL_GND | <input type="checkbox"/> | 24 | 33 | <input type="checkbox"/> | RxOUT4 |
| PWRDWN | <input type="checkbox"/> | 25 | 32 | <input type="checkbox"/> | RxOUT3 |
| RxCLKOUT | <input type="checkbox"/> | 26 | 31 | <input type="checkbox"/> | VCC |
| RxOUT0 | <input type="checkbox"/> | 27 | 30 | <input type="checkbox"/> | RxOUT2 |
| GND | <input type="checkbox"/> | 28 | 29 | <input type="checkbox"/> | RxOUT1 |

56-pin TSSOP
VP386

Pin Descriptions

| Pin No. | Pin Name | Pin Type | Pin Description |
|---------|----------------------------|----------|------------------------------------------------------------------------------------|
| 1 | RxOUT22 | OUT | Data outputs on pins (RxOUT0..27) |
| 2 | RxOUT23 | | |
| 3 | RxOUT24 | | |
| 4 | GND | Ground | Digital ground |
| 5 | RxOUT25 | OUT | Data outputs on pins (RxOUT0..27) |
| 6 | RxOUT26 | | |
| 7 | RxOUT27 | | |
| 8 | LVDS_GND | Ground | Analog ground |
| 9 | RxIN0- | LVDS IN | LVDS input (-) |
| 10 | RxIN0+ | | LVDS input (+) |
| 11 | RxIN1- | | LVDS input (-) |
| 12 | RxIN1+ | | LVDS input (+) |
| 13 | LVDS_VCC | Power | Analog power |
| 14 | LVDS_GND | Ground | Analog ground |
| 15 | RxIN2- | LVDS IN | LVDS input (-) |
| 16 | RxIN2+ | | LVDS input (+) |
| 17 | RxCLKIN- | | LVDS input (-) |
| 18 | RxCLKIN+ | | LVDS input (+) |
| 19 | RxIN3- | | LVDS input (-) |
| 20 | RxIN3+ | | LVDS input (+) |
| 21 | LVDS_GND | Ground | Analog ground |
| 22 | PLL_GND | | PLL ground |
| 23 | PLL_VCC | Power | PLL power |
| 24 | PLL_GND | Ground | PLL ground |
| 25 | $\overline{\text{PWRDWN}}$ | IN | Power-down control input. H: Nomal L: Power down, all ouputs are pulled low. |
| 26 | RxCLKOUT | OUT | Clock output |
| 27 | RxOUT0 | | Data outputs on pins (RxOUT0..27) |
| 28 | GND | Ground | Digital ground |
| 29 | RxOUT1 | OUT | Data outputs on pins (RxOUT0..27) |
| 30 | RxOUT2 | | |
| 31 | VCC | Power | Digital power |
| 32 | RxOUT3 | OUT | Data outputs on pins (RxOUT0..27) |
| 33 | RxOUT4 | | |
| 34 | RxOUT5 | | |

| Pin No. | Pin Name | Pin Type | Pin Description |
|---------|----------|----------|-----------------------------------|
| 35 | RxOUT6 | OUT | Data outputs on pins (RxOUT0..27) |
| 36 | GND | Ground | Digital ground |
| 37 | RxOUT7 | OUT | Data outputs on pins (RxOUT0..27) |
| 38 | RxOUT8 | | |
| 39 | RxOUT9 | | |
| 40 | VCC | Power | Digital power |
| 41 | RxOUT10 | OUT | Data outputs on pins (RxOUT0..27) |
| 42 | RxOUT11 | | |
| 43 | RxOUT12 | | |
| 44 | GND | Ground | Digital ground |
| 45 | RxOUT13 | OUT | Data outputs on pins (RxOUT0..27) |
| 46 | RxOUT14 | | |
| 47 | RxOUT15 | | |
| 48 | VCC | Power | Digital power |
| 49 | RxOUT16 | OUT | Data outputs on pins (RxOUT0..27) |
| 50 | RxOUT17 | | |
| 51 | RxOUT18 | | |
| 52 | GND | Ground | Digital ground |
| 53 | RxOUT19 | OUT | Data outputs on pins (RxOUT0..27) |
| 54 | RxOUT20 | | |
| 55 | RxOUT21 | | |
| 56 | VCC | Power | Digital power |

Absolute Maximum Ratings

| Item | Rating ¹ |
|-----------------------------------------|------------------------|
| Supply Voltage, VCC | -0.3 V to +4 V |
| CMOS/TTL Output Voltage | -0.3 V to (VCC+0.3 V) |
| LVDS Receiver Input Voltage | -0.3 V to (VCC+0.3 V) |
| Ambient Operating Temperature | 0 to +70°C |
| Storage Temperature | -65 to +150°C |
| Junction Temperature | 150°C |
| Soldering Temperature (10 seconds max.) | 260°C |
| Maximum Package Power | 1.61 W (VP386) |
| Package Derating | 12.4 mW/°C above +25°C |
| | 15 mW/°C above +25°C |

1. Stresses greater than those listed under Absolute Maximum Ratings may cause permanent damage to the device. This is a stress rating only and functional operation of the device at these or any other conditions above those indicated in the operational sections of this specification is not implied. Exposure to absolute maximum rating conditions for extended periods may affect reliability.

Recommended Operation Conditions

| Parameter | Min. | Typ. | Max. | Units |
|-----------------------------------------|------|------|------|-------|
| Ambient Operating Temperature (Ta) | 0 | 25 | 70 | °C |
| 3.3 V Supply Voltage (VCC) | 3 | 3.3 | 3.6 | V |
| Receiver Input Range (V _{IN}) | 0 | | 2.4 | V |
| Supply Noise Voltage (V _N) | | | 100 | mVpp |

Electrical Characteristics

VDD=3.3 V ±10%, Ambient temperature 0 to 70°C

| Parameter | Symbol | Conditions | Min. | Typ. | Max. | Units |
|----------------------------------------|-------------------|--------------------------------------------------------------------|-----------|-------|------|-------|
| CMOS/TTL DC Specifications | | | | | | |
| Input High Voltage | V _{IH} | | 2.0 | | VCC | V |
| Input Low Voltage | V _{IL} | | GND | | 0.8 | V |
| Output High Voltage | V _{OH} | I _{OH} = -0.4 mA | 2.7 | 3.3 | VCC | V |
| Output Low Voltage | V _{OL} | I _{OL} = 2 mA | | 0.06 | 0.3 | V |
| Input Clamp Voltage | V _{CL} | I _{CL} = -18mA | | -0.79 | -1.5 | V |
| Input Current | I _{IN} | VCC | | | ±15 | μA |
| | | 0V | | | ±10 | |
| Output Short Circuit Current | I _{OS} | V _{OUT} = 0V | | | -60 | mA |
| LVDS Receiver DC Specifications | | | | | | |
| Differential Input High Threshold | V _{TH} | V _{CM} = +1.2 V | | | +100 | mV |
| Differential Input Low Threshold | V _{TL} | | -100 | | | mV |
| Input Current | I _{IN} | V _{IN} = +2.4 V, VCC = 3.6 V | | | ±10 | μA |
| | | V _{IN} = 0V, VCC = 3.6 V | | | ±15 | μA |
| Receiver Supply Current | | | | | | |
| Receiver Supply Current (worst case) | I _{CCRW} | C _L = 8 pF, f = 65 MHz, worst case pattern | | | 220 | mA |
| | | C _L = 8 pF, f = 100 MHz, worst case pattern | | | 240 | mA |
| Receiver Supply Current (16 Grayscale) | I _{CCRG} | C _L = 8 pF, f = 65 MHz, 16 Grayscale pattern | | | 125 | mA |
| | | C _L = 8 pF, f = 100 MHz, 16 Grayscale pattern | | | 140 | mA |
| Receiver Supply Current (Power Down) | I _{CCRZ} | Power_Down = Low, Receiver outputs stay low during Power-down mode | | 140 | 400 | μA |
| Receiver Switching Characteristics | | | | | | |
| CMOS/TTL Low-to-High Transition Time | CLHT | 20% to 80% VCC, C _L = 8 pF | | 2 | 3.5 | ns |
| CMOS/TTL High-to-Low Transition Time | CHLT | 80% to 20% VCC, C _L = 8 pF | | 1.8 | 3.5 | ns |
| CLKOUT period | RCOP | | 10 | T | 50 | ns |
| CLKOUT High Time | RCOH | | | 4T/7 | | ns |
| CLKOUT Low Time | RCOL | | | 3T/7 | | ns |
| Data Setup to CLKOUT | RSRC | | 0.35T-0.3 | | | ns |
| Data Hold to CLKOUT | RHRC | | 0.45T-1.6 | | | ns |

| Parameter | Symbol | Conditions | Min. | Typ. | Max. | Units |
|---------------------------------------------|--------|--------------------------|-----------|------|-----------|-------|
| RCK+/- to CLKOUT Delay | RCCD | 25°C / 3.3 V, 85MHz | | 14.6 | | ns |
| Receiver PLL Setup Time | RPLLS | | | | 10 | ms |
| Receiver Power Down Delay | RPDD | | | | 1 | μs |
| Receiver Input Strobe Position for Bit0 | RSPos0 | f = 100 MHz, T = 10 ns | -0.25 | 0 | 0.25 | ns |
| Receiver Input Strobe Position for Bit1 | RSPos1 | | T/7-0.25 | T/7 | T/7+0.25 | ns |
| Receiver Input Strobe Position for Bit2 | RSPos2 | | 2T/7-0.25 | 2T/7 | 2T/7+0.25 | ns |
| Receiver Input Strobe Position for Bit3 | RSPos3 | | 3T/7-0.25 | 3T/7 | 3T/7+0.25 | ns |
| Receiver Input Strobe Position for Bit4 | RSPos4 | | 4T/7-0.25 | 4T/7 | 4T/7+0.4 | ns |
| Receiver Input Strobe Position for Bit5 | RSPos5 | | 5T/7-0.25 | 5T/7 | 5T/7+0.25 | ns |
| Receiver Input Strobe Position for Bit6 | RSPos6 | | 6T/7-0.25 | 6T/7 | 6T/7+0.25 | ns |
| RxIn Skew Margin (see note and Figure 8) | Rskm | f = 100 MHz, T = 10 ns | 250 | | | ps |
| | | f = 65 MHz, T = 15.38 ns | 500 | | | ps |

Note: The skew margins mean the maximum timing tolerance between the clock and data channel when the receiver still works well. This margin takes into account the receiver input setup and hold time, and internal clock jitter (i.e., internal data sampling window - RSPos). This margin allows for LVDS transmitter pulse position, interconnect skew, inter-symbol interference and intrinsic channel mismatch which will cause the skew between clock (RC+ and RCK-) and data (RX[n]+ and RX[n]- ; n = 0, 1, 2, 3) channels.

Thermal Characteristics

| Parameter | Symbol | Conditions | Min. | Typ. | Max. | Units |
|----------------------------------------|---------------|----------------|------|------|------|-------|
| Thermal Resistance Junction to Ambient | θ_{JA} | Still air | | 84 | | °C/W |
| | θ_{JA} | 1 m/s air flow | | 76 | | °C/W |
| | θ_{JA} | 2 m/s air flow | | 67 | | °C/W |
| Thermal Resistance Junction to Case | θ_{JA} | | | 50 | | °C/W |

Timing Diagrams

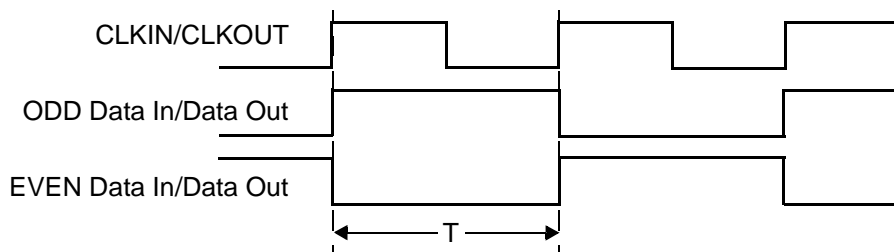


Figure 1. "Worst Case" Test Pattern

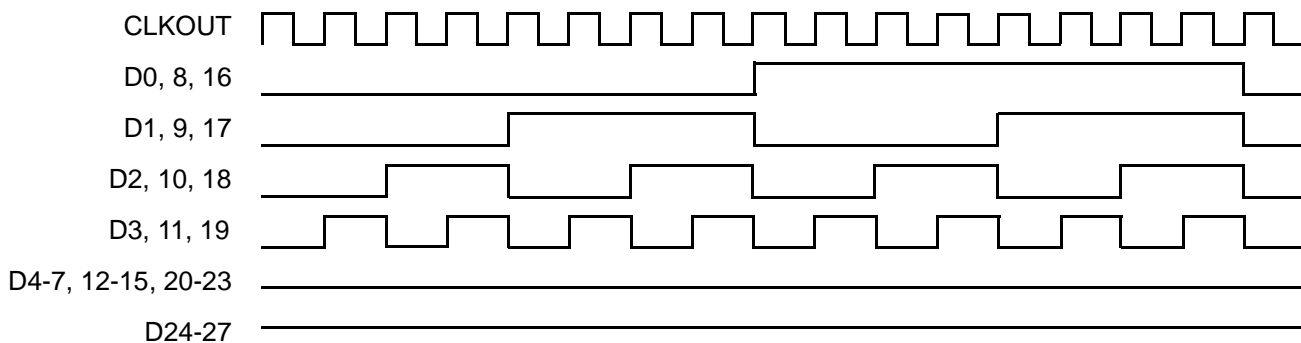


Figure 2. 16-Grayscale Test-Pattern Waveforms

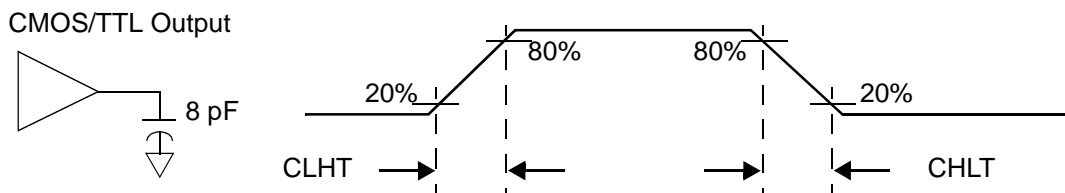


Figure 3. VP386 CMOS/TTL Output Load and Transition Time

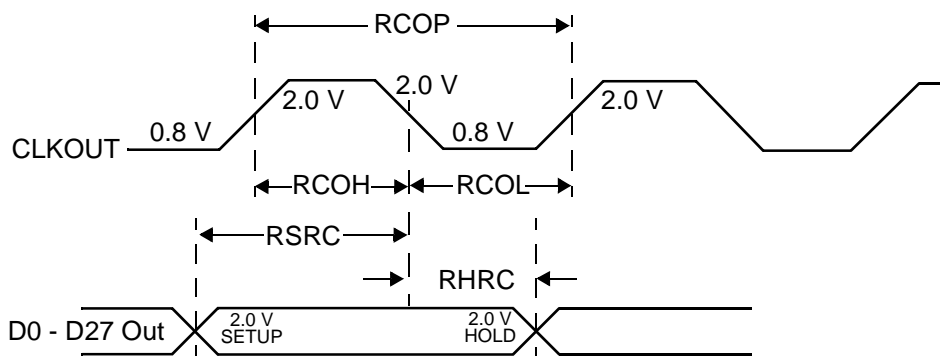


Figure 4. VP386 SETUP/HOLD and High/Low Times

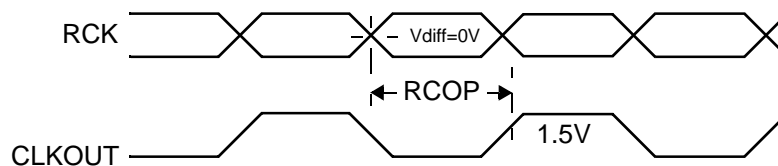


Figure 5. VP386 Clock In to Clock Out Delay

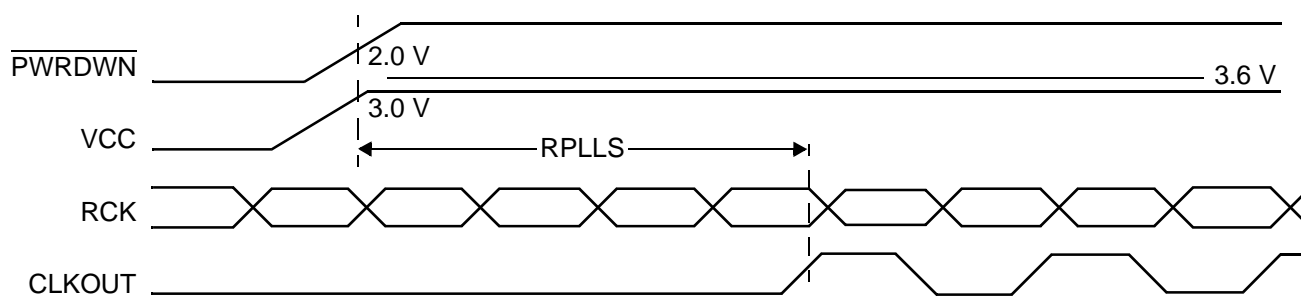


Figure 6. VP386 Phase Lock Loop Set Time

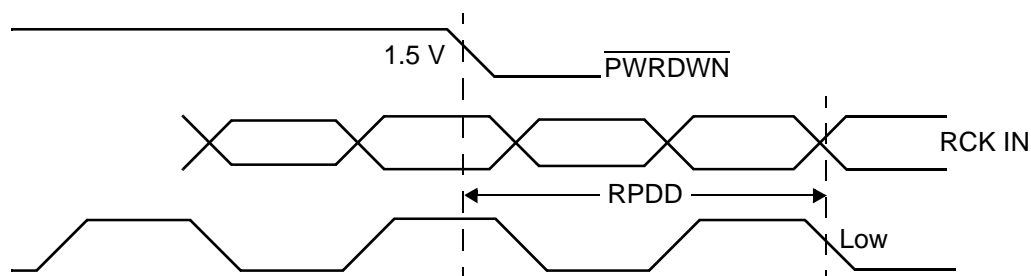


Figure 7. VP386 Power Down Delay

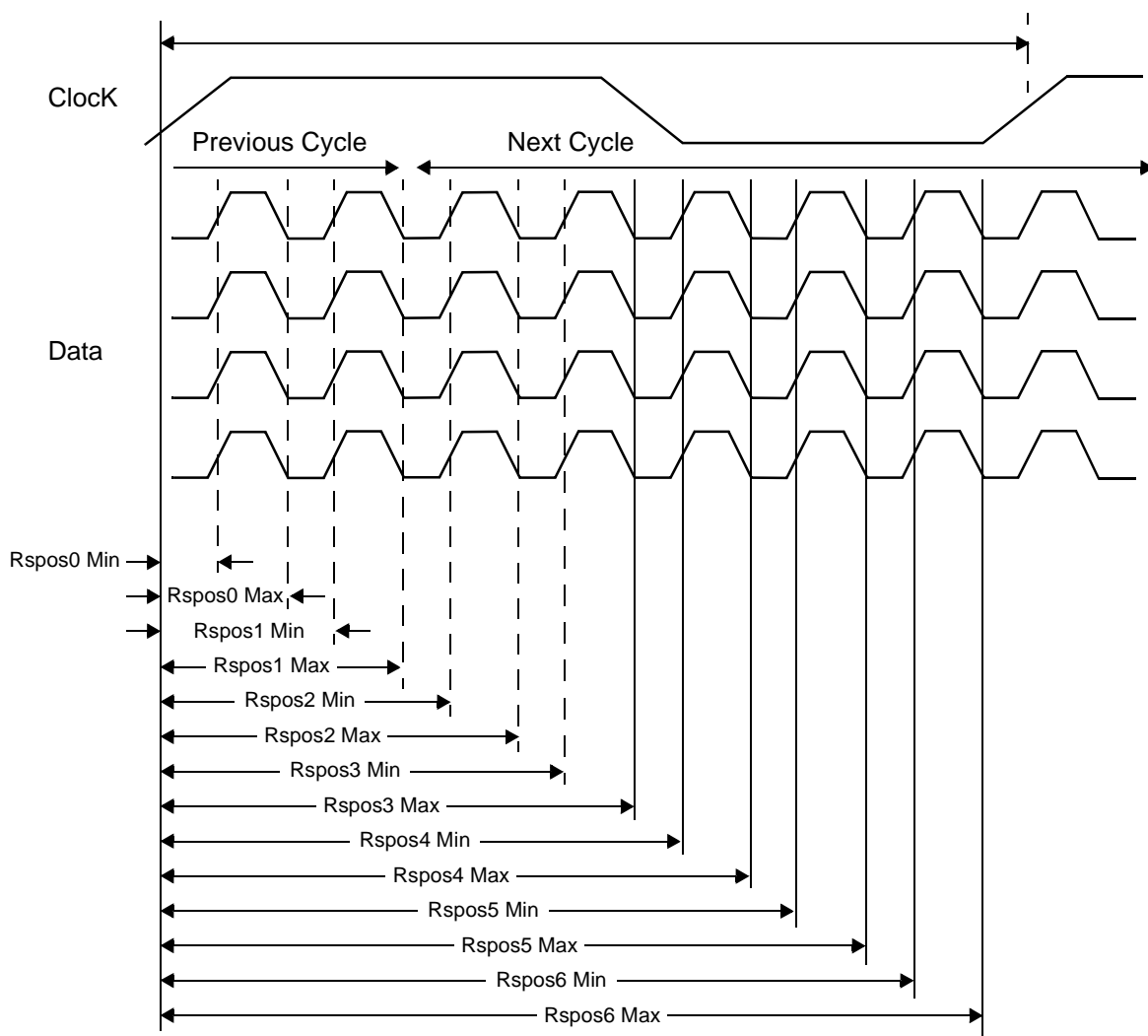


Figure 8. VP386 LVDS Input Strobe Position

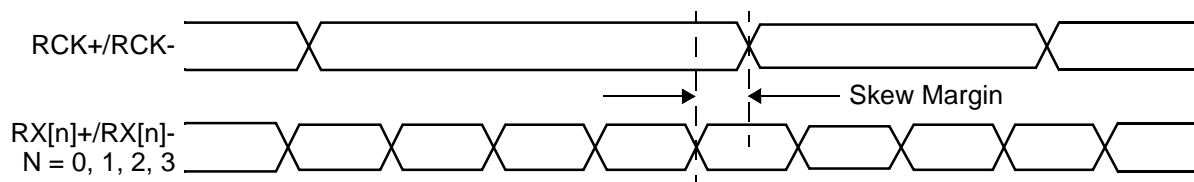
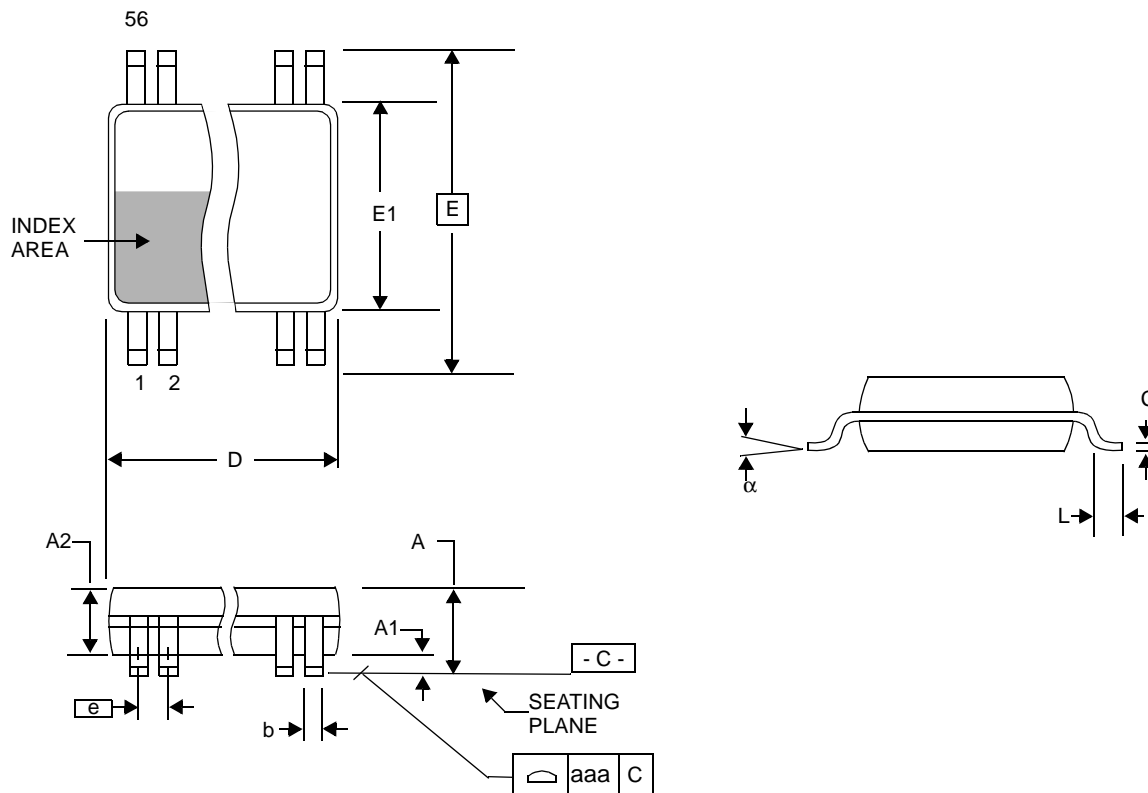


Figure 9. Receiver Input Skew Margin

Package Outline and Package Dimensions (56-pin TSSOP)

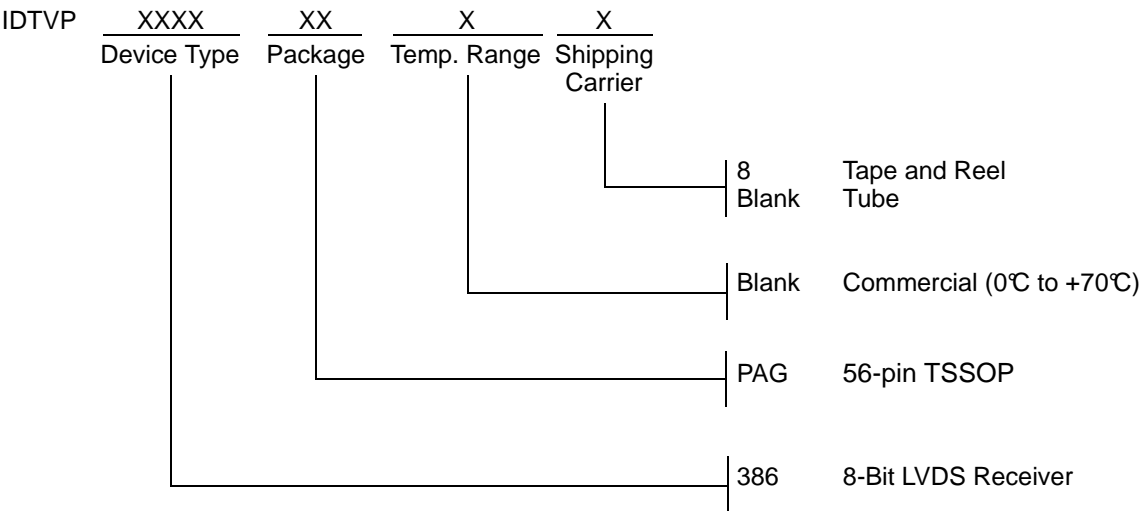
Package dimensions are kept current with JEDEC Publication No. 95



| SYMBOL | In Millimeters | | In Inches ¹ | |
|--------|-------------------|-------|------------------------|------|
| | COMMON DIMENSIONS | | COMMON DIMENSIONS | |
| | MIN | MAX | MIN | MAX |
| A | — | 1.20 | — | .047 |
| A1 | 0.05 | 0.15 | .002 | .006 |
| A2 | 0.80 | 1.05 | .0032 | .041 |
| b | 0.17 | 0.27 | .007 | .011 |
| C | 0.09 | 0.20 | .0035 | .008 |
| D | 13.90 | 14.10 | .547 | .555 |
| E | 8.10 BASIC | | .319 BASIC | |
| E1 | 6.00 | 6.20 | .236 | .244 |
| e | 0.50 BASIC | | .020 BASIC | |
| L | 0.45 | 0.75 | .018 | .030 |
| α | 0° | 8° | 0° | 8° |
| aaa | — | 0.10 | — | .004 |

1. For reference only. Controlling dimensions are in mm.

Ordering Information



IMPORTANT NOTICE AND DISCLAIMER

RENESAS ELECTRONICS CORPORATION AND ITS SUBSIDIARIES ("RENESAS") PROVIDES TECHNICAL SPECIFICATIONS AND RELIABILITY DATA (INCLUDING DATASHEETS), DESIGN RESOURCES (INCLUDING REFERENCE DESIGNS), APPLICATION OR OTHER DESIGN ADVICE, WEB TOOLS, SAFETY INFORMATION, AND OTHER RESOURCES "AS IS" AND WITH ALL FAULTS, AND DISCLAIMS ALL WARRANTIES, EXPRESS OR IMPLIED, INCLUDING, WITHOUT LIMITATION, ANY IMPLIED WARRANTIES OF MERCHANTABILITY, FITNESS FOR A PARTICULAR PURPOSE, OR NON-INFRINGEMENT OF THIRD PARTY INTELLECTUAL PROPERTY RIGHTS.

These resources are intended for developers skilled in the art designing with Renesas products. You are solely responsible for (1) selecting the appropriate products for your application, (2) designing, validating, and testing your application, and (3) ensuring your application meets applicable standards, and any other safety, security, or other requirements. These resources are subject to change without notice. Renesas grants you permission to use these resources only for development of an application that uses Renesas products. Other reproduction or use of these resources is strictly prohibited. No license is granted to any other Renesas intellectual property or to any third party intellectual property. Renesas disclaims responsibility for, and you will fully indemnify Renesas and its representatives against, any claims, damages, costs, losses, or liabilities arising out of your use of these resources. Renesas' products are provided only subject to Renesas' Terms and Conditions of Sale or other applicable terms agreed to in writing. No use of any Renesas resources expands or otherwise alters any applicable warranties or warranty disclaimers for these products.

(Disclaimer Rev.1.0 Mar 2020)

Corporate Headquarters

TOYOSU FORESIA, 3-2-24 Toyosu,
Koto-ku, Tokyo 135-0061, Japan
www.renesas.com

Contact Information

For further information on a product, technology, the most up-to-date version of a document, or your nearest sales office, please visit:
www.renesas.com/contact/

Trademarks

Renesas and the Renesas logo are trademarks of Renesas Electronics Corporation. All trademarks and registered trademarks are the property of their respective owners.