

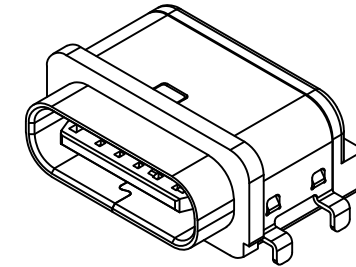
Recommended PCB Layout

Thickness 0.80±0.10mm

Tolerance: ±0.05mm

■ Solder Area □ Component Outline

| Pin | Signal | Mating Sequence |
|-------|--------|-----------------|
| A5 | CC1 | Second |
| A9 | Vbus | First |
| A12 | GND | First |
| B5 | CC2 | Second |
| B9 | Vbus | First |
| B12 | GND | First |
| SHELL | GND | |



Specifications

Material

Insulator: LCP, UL 94V-0, Black

Contact: Copper Alloy

Shell: Stainless Steel

Shielding Plate: Stainless Steel

Gasket: Silicone Rubber, Part No.: USBTJ-04,

Shore Hardness 60A

(Gasket+Connector can be ordered separately or together as a KIT - USB4715-GF-A-KIT)

Plating

Contact

Contact Area: Gold Flash

Solder Tails: Tin over Nickel

Shell: Nickel

Shielding Plate: Nickel

Electrical

Current Rating: 3.00A collectively for Vbus pins

4.25A collectively for GND pins

1.25A for A5/B5 pin

Voltage Rating: 20V DC

Contact Resistance: 40mΩ max initial.

50mΩ max after test

Dielectric Withstanding Voltage: 100V AC

Insulation Resistance 100MΩ min

Mechanical & Environmental

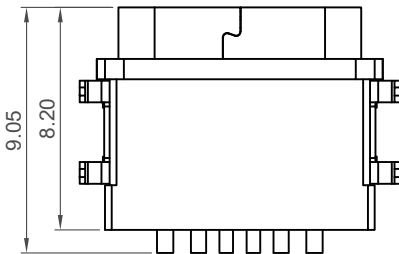
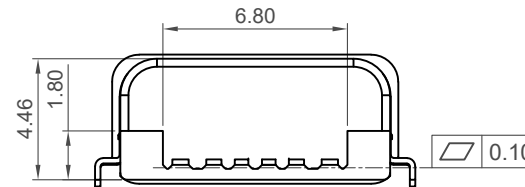
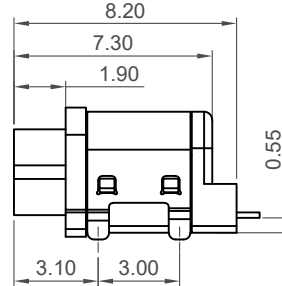
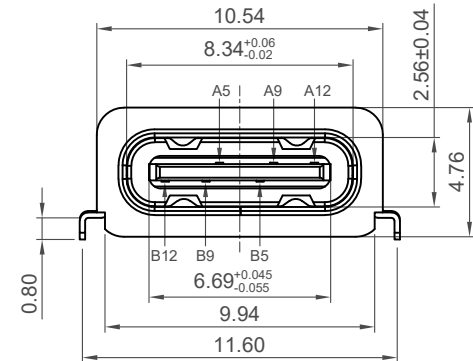
Operating Temperature: -30°C to +85°C

Mating Force: 5 to 20 N.

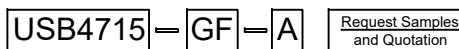
Unmated Force: 6 to 20 N after test

Durability: 10,000 cycles

Ingress Protection Rating: IP67



Ordering Grid



Contact Plating
GF = Gold Flash

Packing Options
A = Tape & Reel (700 per reel)

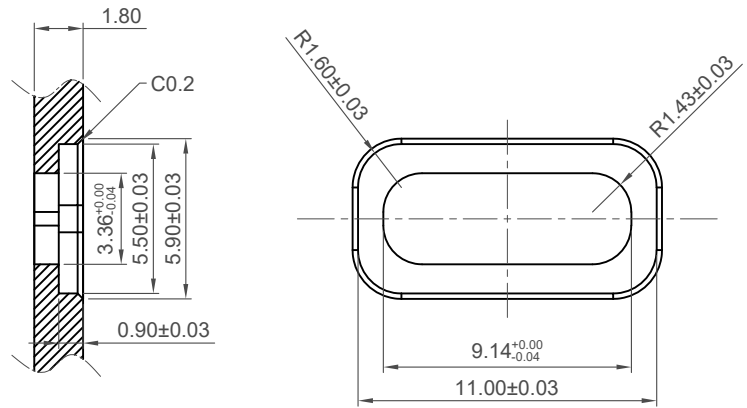
| | | | |
|--------------|-----------------|---|-------------|
| Part Number | | Product Description | |
| USB4715 | | Type C Receptacle, Horizontal, Mid-Mount, SMT, IP67, For Power Charging Only, 6 Pin | |
| Drawing Date | | 4th July 2022 | |
| By | CC | Tolerances (Except as Noted) | Units: |
| Detail | Drawing Release | Length | Metric (mm) |
| Revision | A1 | X.X ± 0.30 | |
| Date | 17/07/23 | X.XX ± 0.25 | |
| | | X.XXX ± 0.10 | |



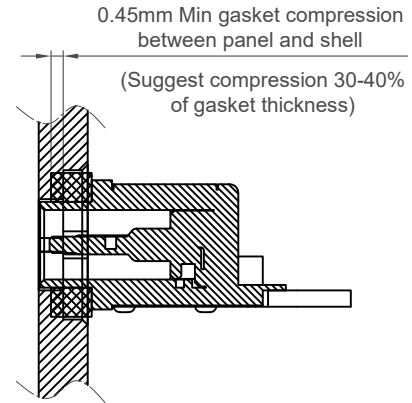
This drawing is confidential and copyright of Global Connector Technology, Ltd (GCT). This drawing must not be copied or disclosed without written consent. E & OE



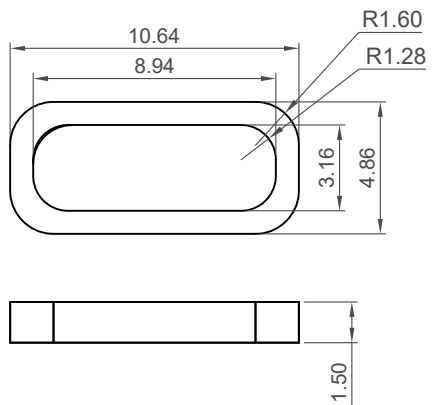
| | | |
|--------------|-------------|---------------|
| Not to Scale | Drawn By CC | Sheet No. 1/4 |
|--------------|-------------|---------------|



Recommended Panel Spec



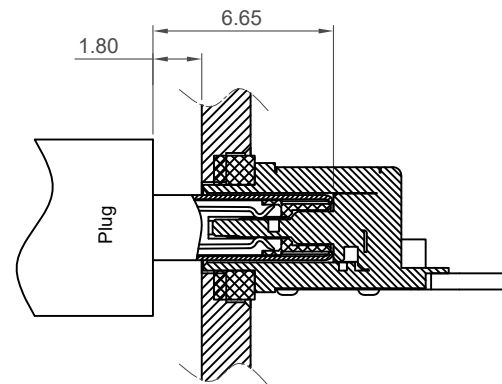
(Suggest compression 30-40% of gasket thickness)



Recommended Waterproof Gasket

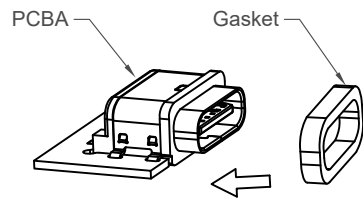
Gasket Part No.: USBTJ-04

(Gasket+Connector can be ordered separately
or together as a KIT - USB4715-GF-A-KIT)
(See separate datasheet for specification)

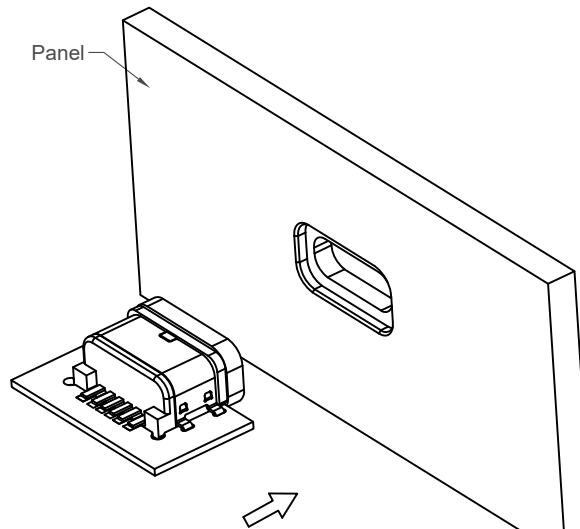


Plug and Receptacle Mating View

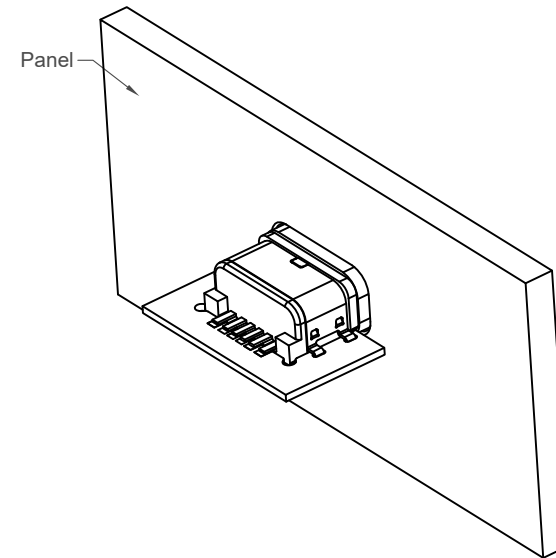
| | | | | | | |
|--------------|-----------------|---|-------------|----------------------|--|--------------------------|
| Part Number | | Product Description | | | This drawing is confidential and copyright of Global Connector Technology, Ltd (GCT). This drawing must not be copied or disclosed without written consent. E & OE | GCT www.gct.co |
| USB4715 | | Type C Receptacle, Horizontal, Mid-Mount, SMT, IP67, For Power Charging Only, 6 Pin | | | | |
| Drawing Date | | 4th July 2022 | | | | |
| By | CC | Tolerances (Except as Noted) | Units: | 3rd Angle Projection | | GCT www.gct.co |
| Detail | Drawing Release | Length | Metric (mm) | | | |
| Revision | A1 | Angle | | | | |
| Date | 17/07/23 | X.X ± 0.30 X.XX ± 0.25 X.XXX ± 0.10 | | | | |
| Not to Scale | Drawn By | CC | Sheet No. | | | |
| | | | 2/4 | | | |



Step 1



Step 2

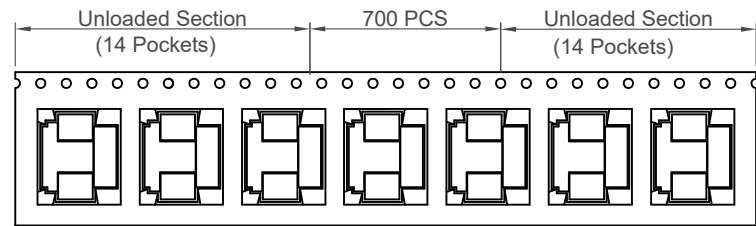


Step 3

Assembly instruction for Gasket set after Reflow
 Available for Type C Receptacle Waterproof Series

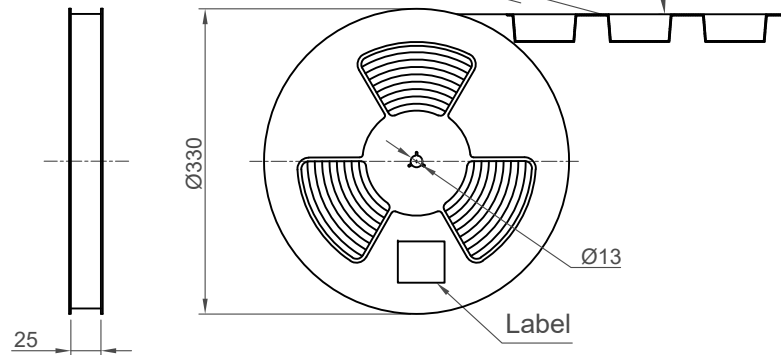
| | | | |
|--------------|-----------------|--|--------------------------|
| Part Number | | Product Description | |
| USB4715 | | Type C Receptacle, Horizontal, Mid-Mount, SMT, IP67, For Power Charging Only, 6 Pin | |
| Drawing Date | | 4th July 2022 | |
| By | CC | Tolerances (Except as Noted) | Units: |
| Detail | Drawing Release | Length X.X ± 0.30 | Metric (mm) |
| Revision | A1 | Angle X.XX ± 0.25 | 3rd Angle Projection |
| Date | 17/07/23 | X.XXX ± 0.10 | |
| | | | |
| | | This drawing is confidential and copyright of Global Connector Technology, Ltd (GCT). This drawing must not be copied or disclosed without written consent. E & OE | |
| Not to Scale | Drawn By | CC | Sheet No. |
| | | | 3/4 |



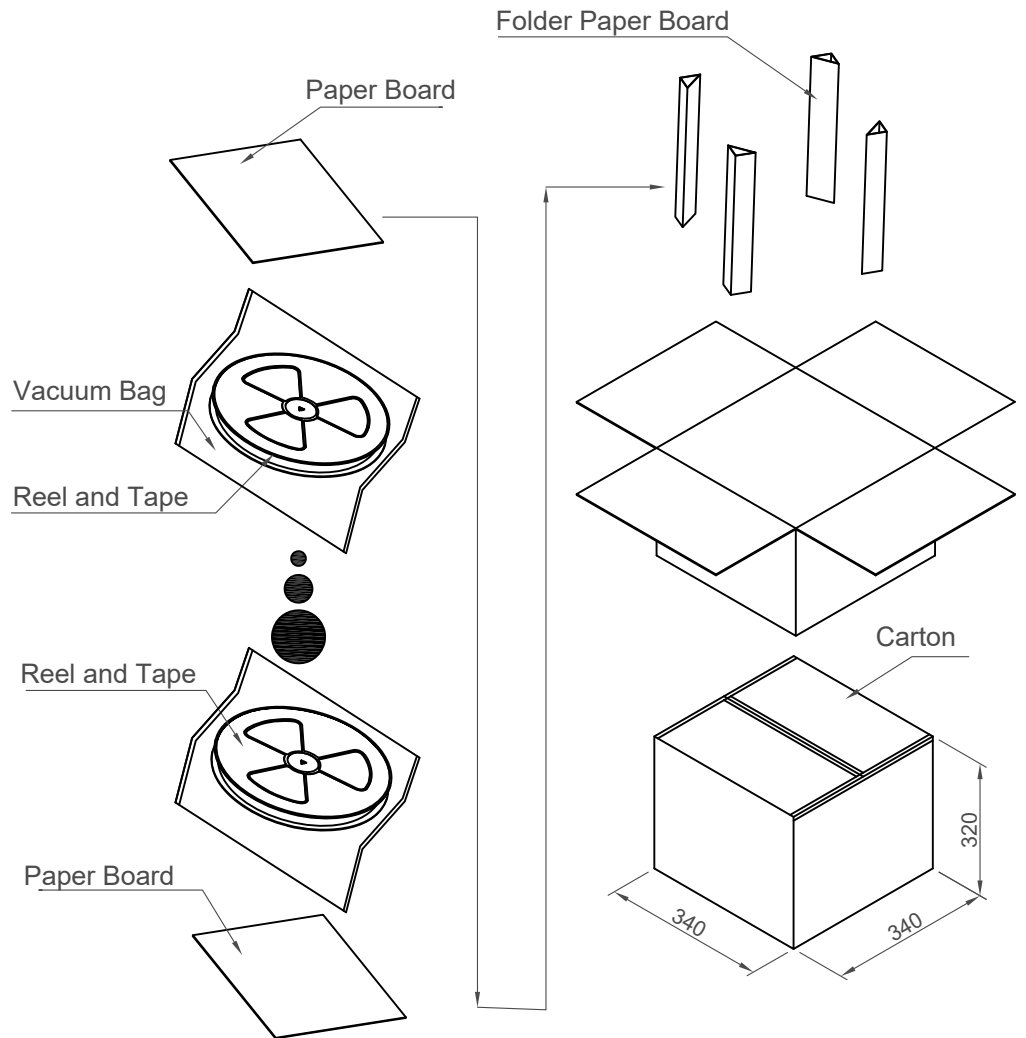
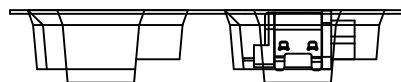
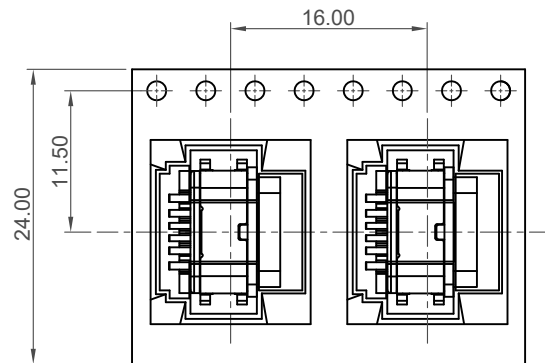


Direction of Unreeling

Peeling Angle 165°~180°



Direction of Unreeling



| Pcs / Reel | Reels / Carton | Total Quantity |
|------------|----------------|----------------|
| 700 | 10 | 7,000 pcs |

| | | | |
|--------------|-----------------|---|----------------------|
| Part Number | | Product Description | |
| USB4715 | | Type C Receptacle, Horizontal, Mid-Mount, SMT, IP67, For Power Charging Only, 6 Pin | |
| Drawing Date | | 4th July 2022 | |
| By | CC | Tolerances (Except as Noted) | Units: |
| Detail | Drawing Release | Length | Metric (mm) |
| Revision | A1 | Angle | 3rd Angle Projection |
| Date | 17/07/23 | | |



This drawing is confidential and copyright of Global Connector Technology, Ltd (GCT). This drawing must not be copied or disclosed without written consent. E & OE



Not to Scale Drawn By CC Sheet No. 4/4