

Piezo Switch N.O.



Gold
Non-illuminated



Alu natural
Non-illuminated



black
Non-illuminated

See below:
[Approvals and Compliances](#)

Description

- Available in version Standard and lettered
- Assembly by mounting with nut
- Easy to clean due to a tightly closed surface (IP69K)
- Pins / Wire / Faston

Unique Selling Proposition

- Variety of design options regarding size, colour, shape, connection or lettering
- High reliability, long lifetime with more than 20 mill. actuations

Characteristics

- Housing material types: plastic, aluminum or stainless steel, ring illuminated version additionally made of polyamide
- For use in harsh environments, both indoors and outdoors (see technical data)

Other versions on request

- Switch for longer switching signal duration, type: PSE IV
- Switch for explosion proof applications, type: PSE EX
- Switch with enhanced vandal proof protection, type: PSE HI

References

- Alternative: switch vandal improved: [PSE HI 22](#)
- Alternative: switch for EX-proof applications:
- Alternative: Other diameter
- Alternative: Other diameter [PSE with cable](#); [PSE NO 19](#); [PSE NO 22](#)
- Alternative: switch with prolonged signal: [PSE AE 16](#); [PSE AE 30](#); [PSE IV 19](#)

Weblinks

- [pdf data sheet](#), [html datasheet](#), [General Product Information](#), [CAD-Drawings](#), [Product News](#), [Detailed request for product](#)

Technical Data

Electrical Data

| | |
|-------------------------------|--|
| Switching Function | momentary |
| Switching Voltage | max. 42 / 60 VAC/DC |
| Switching current | max. 100 mA |
| Electrical Rating | 1 W |
| Lifetime | 20 million actuations at Rated Switching Capacity |
| Switch Resistance OFF | > 10 MΩ |
| Switch Resistance ON | < 20 Ω actuated (Ta = 25°C) |
| Capacity | 5 nF |
| N.O. Closing Impulse Duration | 20- 1000 ms depending on actuating force, time and speed |
| Contact Configuration | free polarity |

RGB Illumination

Current Consumption (max per color) -

Mechanical Data

| | |
|-----------------------|------------------------------|
| Actuating Force | ≤ 3 N at ambient temperature |
| Actuating Travel | 0.002 mm |
| Shock Protection | IK02 |
| Mounting screw torque | 2.5 Nm |

Climatical Data

| | |
|--|---|
| Operating Temperature | -40 to 85 °C |
| Storage Temperature | -40 to 85 °C |
| IP-Protection | IP67 acc. to IEC 60529, IP69K acc. to DIN 40050-9 |
| Environmental Assessment | +55°C / 93% r.h. acc. to DIN EN 60068-2-30 |
| Salt Spray Test (acc. to DIN 50021-SS) | 24 h / 48 h / 96 h Residence Time |

Material

| | |
|--|--|
| Housing (depending on type) | Stainless Steel, Aluminium anodized, Polyamide |
| Actuating Area / Insert (with Ring Illumination) | Stainless Steel, Aluminum anodized |
| Illuminated Ring (Ring Illumination) | Polyamide |





Approvals and Compliances

Detailed information on product approvals, code requirements, usage instructions and detailed test conditions can be looked up in [Details about Approvals](#)

SCHURTER products are designed for use in industrial environments. They have approvals from independent testing bodies according to national and international standards. Products with specific characteristics and requirements such as required in the automotive sector according to IATF 16949, medical technology according to ISO 13485 or in the aerospace industry can be offered exclusively with customer-specific, individual agreements by SCHURTER.





Application standards

Application standards where the product can be used

| Organization | Design | Standard | Description |
|--|--------------------------------|-------------------------|--|
|  | Suitable for applications acc. | EMC Directive: | EMC directive 2014/30/EU |
|  | Suitable for applications acc. | MIL-STD: | 202F Method 107G, 202F Method 204D, 202F Method 213B, 416D Method RS103, 810E Method 501.3, 810E Method 502.3, 810E Method 507.3 |
|  | Suitable for applications acc. | VDE Certificate Number: | DIN EN 61000-4-2, DIN EN 61000-4-4, DIN EN 61000-4-5 |
|  | Suitable for applications acc. | IEC/UL 62368-1 | Audio/video, information and communication technology equipment - Part 1: Safety requirements |

Compliances

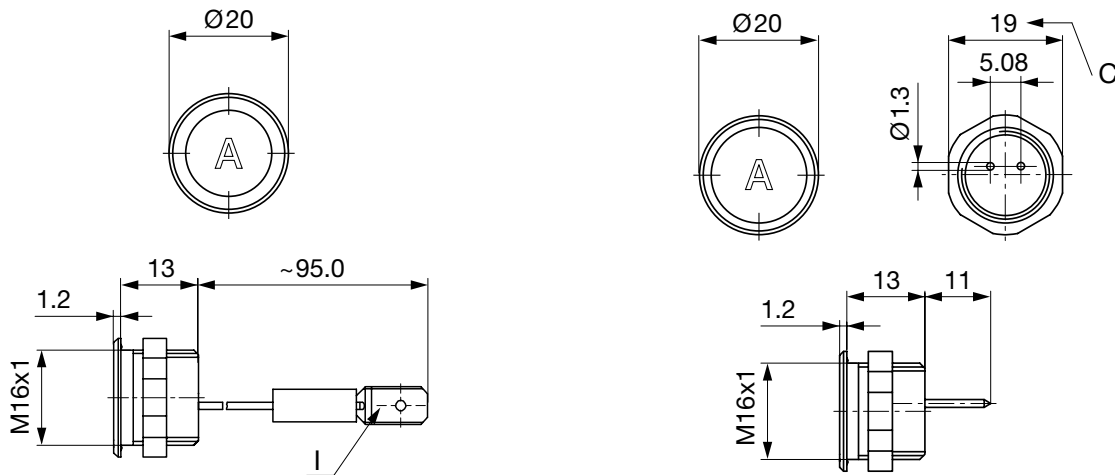
The product complies with following Guide Lines

| Identification | Details | Initiator | Description |
|--|--|-------------|---|
|  | CE declaration of conformity | SCHURTER AG | The CE marking declares that the product complies with the applicable requirements laid down in the harmonisation of Community legislation on its affixing in accordance with EU Regulation 765/2008. |
|  | UKCA declaration of conformity | SCHURTER AG | The UKCA marking declares that the product complies with the applicable requirements laid down in the British Amendment of Regulation (EC) 765/2008. |
|  | RoHS | SCHURTER AG | Directive RoHS 2011/65/EU, Amendment (EU) 2015/863 |
|  | REACH | SCHURTER AG | On 1 June 2007, Regulation (EC) No 1907/2006 on the Registration, Evaluation, Authorization and Restriction of Chemicals 1 (abbreviated as "REACH") entered into force. |

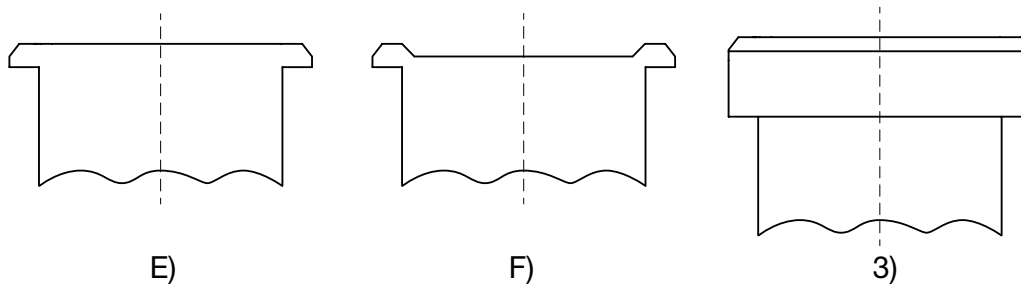
Dimension [mm]

PSE M16 with Faston

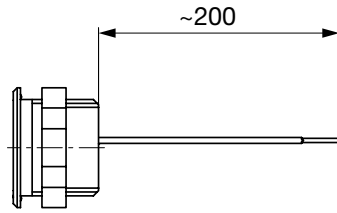
PSE 16 with Pins



Design actuating area



PSE M16 with stranded wire



Legende:

C = Schlüsselweite

I = Flachsteckzunge 6,3 x 0,8

Beschriftung:

- wahlweise mit/ohne Beschriftung

- Lage der Anschlüsse zur Lage der Beschriftung ist nicht definiert

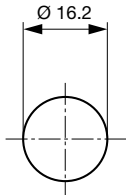
F) mit Fingerführung

E) ohne Fingerführung

3) erhöhte Frontform M19 (Standard, weitere auf Anfrage)

Dimension

PSE 16



Drilling diagram

Marking

The last three digits in the order number define the lettering:

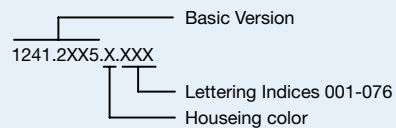
001-076

Standard Lettering

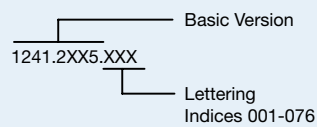
101-

Customized Lettering

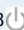



Lettering - Aluminium / Plastic Material



Lettering - Stainless Steel



Order Index Lettering

| Laser Marking | | | |
|---------------|---------|-------------|---|
| 001 =A | 021 =U | 041 =÷ | 061 =EIN |
| 002 =B | 022 =V | 042 = * | 062 =AUS |
| 003 =C | 023 =W | 043 == | 063 =AUF |
| 004 =D | 024 =X | 044 = # | 064 =AB |
| 005 =E | 025 =Y | 045 = ↔ | 065 =ON |
| 006 =F | 026 =Z | 046 = † | 066 =OFF |
| 007 =G | 027 =0 | 047 = → | 067 =UP |
| 008 =H | 028 =1 | 048 = ← | 068 =DOWN |
| 009 =I | 029 =2 | 049 = ↓ | 069 =HIGH |
| 010 =J | 030 =3 | 050 = ↑ | 070 =LOW |
| 011 =K | 031 =4 | 051 = % | 071 =ON/OFF |
| 012 =L | 032 =5 | 052 = √ | 072 =START |
| 013 =M | 033 =6 | 053 =CTRL | 073 =RESET |
| 014 =N | 034 =7 | 054 =RETURN | 074 =2023-04-18  |
| 015 =O | 035 =8 | 055 =SHIFT | 075 =2023-04-18  |
| 016 =P | 036 =9 | 056 =LOCK | 076 =2023-04-18  |
| 017 =Q | 037 =+ | 057 =STOP | 077 =2023-04-18  |
| 018 =R | 038 =- | 058 =ENTER | |
| 019 =S | 039 =. | 059 =BACK | |
| 020 =T | 040 = x | 060 =LINE | |

Please note that the font size depends on the number of characters

Lettering Colour of Laser Lettering

| Material | Lettering Colour | | |
|----------------------------|------------------|----------------|--------------------------------|
| Stainless Steel | black | Filled letters | |
| Aluminum natural anodized | light grey | Filled letters | (only after customer approval) |
| Aluminum coloured anodized | light grey | Filled letters | |

All Variants

| Mounting Diameter | Terminal | Housing Material, Torsion Protection | Colour of Housing | Actuator area | Illumination, LED | Config. Code | Order Number |
|-------------------|--------------------------|--------------------------------------|-------------------|---------------|-------------------|--------------------|---------------|
| 16 | Flexible wire connection | Aluminum ,no | gold | F | non-illuminated | PSE M 16 NO Alu/St | 1241.3336.075 |
| 16 | Pins | Aluminum ,no | gold | F | non-illuminated | PSE M 16 NO Alu/St | 1241.2411.1 |
| 16 | Pins | Aluminum ,no | red | F | non-illuminated | PSE M 16 NO Alu/St | 1241.2411.3 |
| 16 | Pins | Aluminum ,no | blue | F | non-illuminated | PSE M 16 NO Alu/St | 1241.2411.4 |
| 16 | Pins | Aluminum ,no | green | F | non-illuminated | PSE M 16 NO Alu/St | 1241.2411.5 |
| 16 | Pins | Aluminum ,no | black | F | non-illuminated | PSE M 16 NO Alu/St | 1241.2411.7 |
| 16 | Pins | Aluminum ,no | Alu natural | F | non-illuminated | PSE M 16 NO Alu/St | 1241.2411.8 |
| 16 | Pins | Plastics ,no | red | F | non-illuminated | PSE M 16 NO K | 1241.2350 |
| 16 | Pins | Plastics ,no | white | F | non-illuminated | PSE M 16 NO K | 1241.2351 |
| 16 | Pins | Plastics ,no | Alu natural | F | non-illuminated | PSE M 16 NO K | 1241.2352 |
| 16 | Pins | Plastics ,no | black | F | non-illuminated | PSE M 16 NO K | 1241.2353 |
| 16 | Pins | Stainless Steel ,no | - | F | non-illuminated | PSE M 16 NO Alu/St | 1241.2611 |
| 16 | Faston | Aluminum ,no | red | F | non-illuminated | PSE M 16 NO Alu/St | 1241.3000 |
| 16 | Faston | Aluminum ,no | green | F | non-illuminated | PSE M 16 NO Alu/St | 1241.3001 |
| 16 | Faston | Aluminum ,no | black | F | non-illuminated | PSE M 16 NO Alu/St | 1241.3002 |
| 16 | Faston | Aluminum ,no | Alu natural | F | non-illuminated | PSE M 16 NO Alu/St | 1241.3003 |
| 16 | Faston | Plastics ,no | Alu natural | F | non-illuminated | PSE M 16 NO K | 1241.2356 |

Nut with gasket are enclosed in the box.

| Mounting Diameter | Terminal | Housing Material, Torsion Protection | Colour of Housing | Actuator area | Illumination, LED | Config. Code | Order Number |
|-------------------|----------|--------------------------------------|-------------------|---------------|-------------------|--------------|--------------|
|-------------------|----------|--------------------------------------|-------------------|---------------|-------------------|--------------|--------------|

Other mounting diameters, materials, colors, connections, supply voltages possible available on request.
 Special materials e.g. Marine grade stainless steel for use in salt and chlorinated environment on request.

The MOQ for standard laser lettering on standard variants is a packing unit.

Most Popular.

Availability for all products can be searched real-time: <https://www.schurter.com/en/Stock-Check/Stock-Check-SCHURTER>

Legend:

Type: PSE

NO = normally open

K = Plastics

Alu = Aluminium

ES = Stainless steel

F = Finger guidance

Packaging unit

10 in box with insert or packed in air cushion bags



- Actuating elements in ESD safe packaging
- Screw nuts and sealing O-ring in a bag (enclosed in the box)

Accessories

Description



[Connecting_Terminal_PSE](#)
 Connecting Terminal