

- High power density 3" x 5.8" encased medical power supply
- Protection class II prepared
- 450 Watt up to 65°C without derating, 320 Watt fanless operation without derating up to 50°C
- Medical certification to IEC/EN/ES 60601-1 3rd edition for 2 x MOPP
- EMC compliance to IEC/EN 60601-1-2 4th edition
- Risk management process according to ISO 14971 incl. risk management file
- Isolation (4000 VAC) and leakage current (<100 µA) rated for BF applications
- Standard features: 5 V standby output, 12 V fan output, Remote On/Off, Power Good Signal, variable fan speed
- Operating up to 5000 m altitude
- 5-year product warranty



ES 60601-1 IEC 60601-1
UL 62368-1 IEC 62368-1

The TPP 450B-M Series of 450 Watt AC/DC power supplies feature a reinforced double I/O isolation system according to latest medical safety standards (60601-1 3rd edition, 2 x MOPP) and is suitable for class II applications. The earth leakage current is below 100 µA what makes the units suitable for BF (body floating) applications. The excellent efficiency of up to 94% allows a high power density for the standard 3" x 5" packaging format. Fanless operation power is 320W up to +50°C and 450W at +65°C with fan. Thus you can power your medical device in a quiet and hygienic way as you don't need to run a fan to cool down the power supply. High reliability is provided by use of industrial quality grade components and an excellent thermal management. It makes the products an ideal solution for medical devices and for demanding safety and space critical applications.

Models

| Order Code | Output Power max. | Output Voltage nom. (adjustable) | Output Current max. | Efficiency typ. |
|----------------|-------------------|----------------------------------|---------------------|-----------------|
| TPP 450-112B-M | 450 W | 12 VDC (11.0 - 13.0 VDC) | 37'500 mA | 91 % |
| TPP 450-115B-M | | 15 VDC (13.8 - 16.2 VDC) | 30'000 mA | 92 % |
| TPP 450-124B-M | | 24 VDC (22.1 - 25.9 VDC) | 18'750 mA | 93 % |
| TPP 450-128B-M | | 28 VDC (25.8 - 30.2 VDC) | 16'100 mA | 93 % |
| TPP 450-136B-M | | 36 VDC (33.1 - 38.9 VDC) | 12'500 mA | 93 % |
| TPP 450-148B-M | | 48 VDC (44.2 - 51.8 VDC) | 9'400 mA | 94 % |
| TPP 450-153B-M | | 53 VDC (48.8 - 57.2 VDC) | 8'550 mA | 94 % |

Options

| | |
|---|---|
| TPP 450-AUX1 | - Optional Cable for auxiliary connection (2 x 4 pin): www.tracopower.com/products/tpp450-aux1.pdf |
| on demand (backorder with MOQ non stocking item) | - Optional version with fan on top |

Input Specifications

| | | |
|------------------------|-----------------------------|--|
| Input Voltage | - AC Range | Operational Range: 85 - 264 VAC (Full Range) Rated Range: 100 - 240 VAC (Full Range) |
| | - DC Range | Operational Range: 120 - 370 VDC (Designed for, no certification) Polarity: +DC: L / -DC: N |
| Input Frequency | | Operational Range: 47 - 440 Hz Certified: 50/60 Hz |
| | | |
| Input Current | - Full Load & Vin = 230 VAC | 2'400 mA max. |
| | - Full Load & Vin = 115 VAC | 5'800 mA max. |
| Power Consumption | - No load & Vin = 230 VAC | 1'050 mW max. |
| | - No load & Vin = 115 VAC | 1'450 mW max. |
| Input Inrush Current | - At 230 VAC | 100 A max. |
| | - At 115 VAC | 55 A max. |
| Power Factor | - At 230 VAC | 0.95 min. (Active Power Factor Correction) |
| | - At 115 VAC | 0.95 min. (Active Power Factor Correction) |
| Input Protection | | T 6.3 A / 250 VAC (Internal Fuse in L & N) |
| Recommended Input Fuse | | (The need of an external fuse has to be assessed in the final application.) |

Output Specifications

| | | |
|--|---------------------------------|---|
| Output Voltage Adjustment | | ±8% (By trim potentiometer) Output power must not exceed rated power! |
| Voltage Set Accuracy | | ±1% max. |
| Regulation | - Input Variation (Vmin - Vmax) | 0.2% max. |
| | - Load Variation (0 - 100%) | 0.5% max. |
| Ripple and Noise (20 MHz Bandwidth) | 12 VDC model: | 250 mVp-p typ. (w/ 1 μ F X7R) |
| | 15 VDC model: | 300 mVp-p typ. (w/ 1 μ F X7R) |
| | 24 VDC model: | 240 mVp-p typ. (w/ 1 μ F X7R) |
| | 28 VDC model: | 280 mVp-p typ. (w/ 1 μ F X7R) |
| | 36 VDC model: | 360 mVp-p typ. (w/ 1 μ F X7R) |
| | 48 VDC model: | 480 mVp-p typ. (w/ 1 μ F X7R) |
| | 53 VDC model: | 530 mVp-p typ. (w/ 0.1 μ F X7R) |
| Capacitive Load | 12 VDC model: | 31'250 μF max. |
| | 15 VDC model: | 20'000 μF max. |
| | 24 VDC model: | 7'820 μF max. |
| | 28 VDC model: | 5'750 μF max. |
| | 36 VDC model: | 3'500 μF max. |
| | 48 VDC model: | 1'960 μF max. |
| Minimum Load | 53 VDC model: | 1'600 μF max. |
| | | Not required |
| Temperature Coefficient | | ±0.02 %/K max. |
| Hold-up Time | - At 230 VAC | 12 ms min. |
| | - At 115 VAC | 12 ms min. |
| Start-up Time | - At 230 VAC | 2'000 ms max. |
| | - At 115 VAC | 2'000 ms max. |
| Short Circuit Protection | | Continuous, Automatic recovery (Level 1, nom.) Latch (Level 2, instantaneous high current) |
| Output Current Limitation | | 115 - 155% of Iout max. |
| Overvoltage Protection | | 110 - 135% of Vout nom. (Latch off, Standby Power Source always present) |
| Transient Response | - Response Deviation | 3% max. (50% to 75% Load Step) |
| | - Response Time | 600 μs typ. (50% to 75% Load Step) |

All specifications valid at nominal voltage, resistive full load and +25°C after warm-up time, unless otherwise stated.

Safety Specifications

| | | |
|-----------------------|--|--|
| Safety Standards | - IT / Multimedia Equipment | EN 62368-1 IEC 62368-1 UL 62368-1 |
| | - Railway Fire Protection - Medical Equipment | EN 45545-2 EN 60601-1 IEC 60601-1 ANSI/AAMI ES 60601-1 |
| | - Certification Documents | 2 x MOPP (Means Of Patient Protection) www.tracopower.com/overview/tpp450b-m |
| Protection Class | | Class I & II (Prepared): Reinforced Insulation |
| Pollution Degree | | PD 2 |
| Over Voltage Category | | OVC II |

EMC Specifications

| | | |
|---------------|--|--|
| EMI Emissions | - Conducted Emissions | EN 60601-1-2 edition 4 (Medical Devices) EN 55011 class B (internal filter) EN 55032 class B (internal filter) |
| | - Radiated Emissions | EN 55011 class A (internal filter) EN 55032 class A (internal filter) |
| | - Harmonic Current Emissions | EN 61000-3-2, class A |
| | - Voltage Fluctuations & Flicker | EN 61000-3-2, class D EN 61000-3-3 (For optimal EMI performance the power supply should be mounted to a grounded aluminium plate (480 x 248 x 12 mm) with electrical contact to the four PCB mounting holes. To comply with safety standards, this plate must be grounded.) |
| EMS Immunity | - Electrostatic Discharge | EN 55024 (IT Equipment) EN 55035 (Multimedia) EN 60601-1-2 edition 4 (Medical Devices) Air: EN 61000-4-2, ± 15 kV, perf. criteria A Contact: EN 61000-4-2, ± 8 kV, perf. criteria A EN 61000-4-3, 3 V/m, perf. criteria A EN 61000-4-4, ± 2 kV, perf. criteria A L to L: EN 61000-4-5, ± 1 kV, perf. criteria A L to PE: EN 61000-4-5, ± 2 kV, perf. criteria A EN 61000-4-6, 20 Vrms, perf. criteria A |
| | - RF Electromagnetic Field - EFT (Burst) / Surge | Continuous: EN 61000-4-8, 30 A/m, perf. criteria A 230 VAC / 50 Hz: EN 61000-4-11 30%, 25 periods, perf. criteria A >95%, 0.5 periods, perf. criteria A >95%, 1 period, perf. criteria A >95%, 250 periods, perf. criteria B 115 VAC / 60 Hz: EN 61000-4-11 30%, 25 periods, perf. criteria A >95%, 0.5 periods, perf. criteria A >95%, 1 period, perf. criteria A >95%, 250 periods, perf. criteria B |
| | - Conducted RF Disturbances - PF Magnetic Field - Voltage Dips & Interruptions | |

General Specifications

| | | |
|--|-------------------------|---------------------------|
| Relative Humidity | | 95% max. (non condensing) |
| Temperature Ranges | - Operating Temperature | -40°C to +80°C |
| | - Storage Temperature | -40°C to +80°C |
| Power Derating | - High Temperature | Depending on model |
| | - Low Input Voltage | 1.33 %/V below 100 VAC |
| See application note: www.tracopower.com/overview/tpp450b-m | | |

All specifications valid at nominal voltage, resistive full load and +25°C after warm-up time, unless otherwise stated.

| | | |
|--|--|--|
| Over Temperature Protection Switch Off | - Protection Mode - Measurement Point | See application note: www.tracopower.com/overview/tpp450b-m (Standby Power Source always present) |
| Cooling System | | Forced air cooling (with internal fan) |
| Fan Power Source | - Characteristic - Output Voltage - Output Current | Variable fan speed (temperature regulated) 12 VDC 500 mA max. |
| Standby Power Source | - Output Voltage - Output Current | 5 VDC 2000 mA max. |
| Remote Control | - Voltage Controlled Remote - Remote Pin Input Current | On: 3.0 to 12 VDC or open circuit Off: 0 to 1.2 VDC or short circuit Refers to '+Remote' and '-Remote' Pin -0.5 to 1.0 mA (Standby power source is always present) |
| Altitude During Operation | | 5'000 m max. |
| Switching Frequency | | 55 - 85 kHz (PFM) |
| Insulation System | | Reinforced Insulation |
| Working Voltage (rated) | | 312 VAC |
| Isolation Test Voltage | - Input to Output, 60 s - Input to Case or PE, 60 s - Output to Case or PE, 60 s | 4'000 VAC 2'500 VAC 2'500 VAC |
| Isolation Resistance | - Input to Output, 500 VDC | 100 MΩ min. |
| Leakage Current (at 264 VAC) | - Touch Current | 100 μA max. |
| Reliability | - Calculated MTBF | 410'000 h (MIL-HDBK-217F, ground benign) |
| Environment | - Vibration - Mechanical Shock | IEC 60068-2-6 IEC 60068-2-27 |
| Housing Material | | Stainless Steel (Cover) |
| Housing Type | | Metal Case |
| Mounting Type | | Chassis Mount |
| Connection Type | | Pin Connector |
| Weight | | 552 g |
| Power OK Signal | - Trigger Threshold - Power OK - Power Off - Pin Specifications | Open collector output 12 VDC model: 9.8 - 11 VDC 15 VDC model: 12.3 - 13.8 VDC 24 VDC model: 19.7 - 22.1 VDC 28 VDC model: 23 - 25.8 VDC 36 VDC model: 29.5 - 33.1 VDC 48 VDC model: 39.4 - 44.2 VDC 53 VDC model: 43.5 - 48.8 VDC Low level High resistance (Refers to 'PG' and '-Vout' Pin) 50 VDC / 50 mA / 120 mW max. |
| Sense Function | | 8% max. of Vout nom. (If sense function is not used, sense pins should be connected to output pins.) |

All specifications valid at nominal voltage, resistive full load and +25°C after warm-up time, unless otherwise stated.

Environmental Compliance - REACH Declaration

www.tracopower.com/info/reach-declaration.pdf

REACH SVHC list compliant

REACH Annex XVII compliant

www.tracopower.com/info/rohs-declaration.pdf

- RoHS Declaration

Exemptions: 7a, 7c-I

(RoHS exemptions refer to the component concentration only, not to the overall concentration in the product (O5A rule).)

- SCIP Reference Number

630b0f72-de93-4729-a038-e91e86c9e6d9

- Flammability (EN 45545-2)

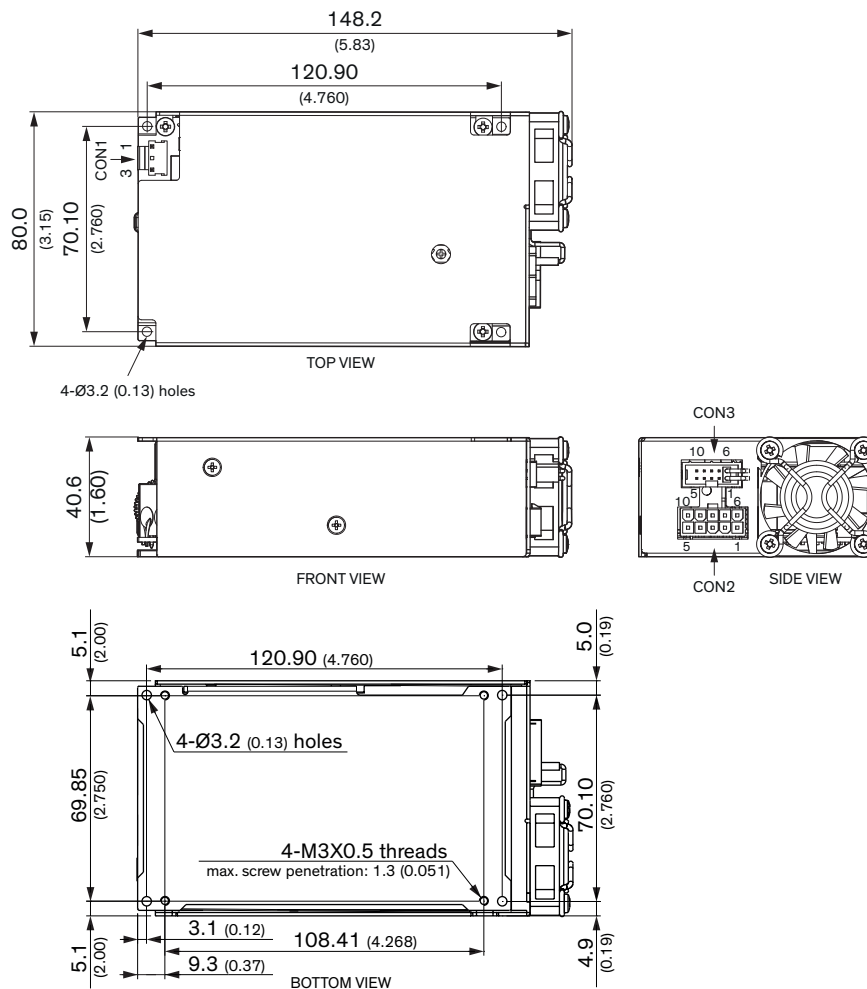
www.tracopower.com/info/en45545-declaration.pdf

Supporting Documents

Overview Link (for additional Documents)

www.tracopower.com/overview/tpp450b-m

Outline Dimensions



| Input | |
|-------|----------|
| CON1 | |
| Pin | Function |
| 1 | AC (L) |
| 3 | AC (N) |

| Output | |
|--------|----------|
| CON2 | |
| Pin* | Function |
| 1-5 | -Vout |
| 6-10 | +Vout |

| Auxiliary | |
|-----------|------------|
| CON3 | |
| Pin | Function |
| 1 | +Fan |
| 2 | +Sense |
| 3 | +Remote |
| 4 | PG |
| 5 | +Standby |
| 6 | -Fan** |
| 7 | -Sense |
| 8 | -Remote** |
| 9 | No pin |
| 10 | -Standby** |

*Terminal rated for 13 A max.
(at higher current connection has to be split)

CON1:

Molex housing:
09-50-8031

Molex crimp terminals:
08500106 (2478),
08520112 (6838),
45570

CON2:

Molex housing:
39-01-2105

Molex crimp terminals:
5556,45750

CON3:

Molex housing:
90143-0010

Molex crimp terminals:
90119

**Internally connected with -Vout

Max. screw penetration: 1.3 (0.05)

All dimensions in mm (inch)

Tolerance: X.X ±0.5 (X.XX ±0.02)

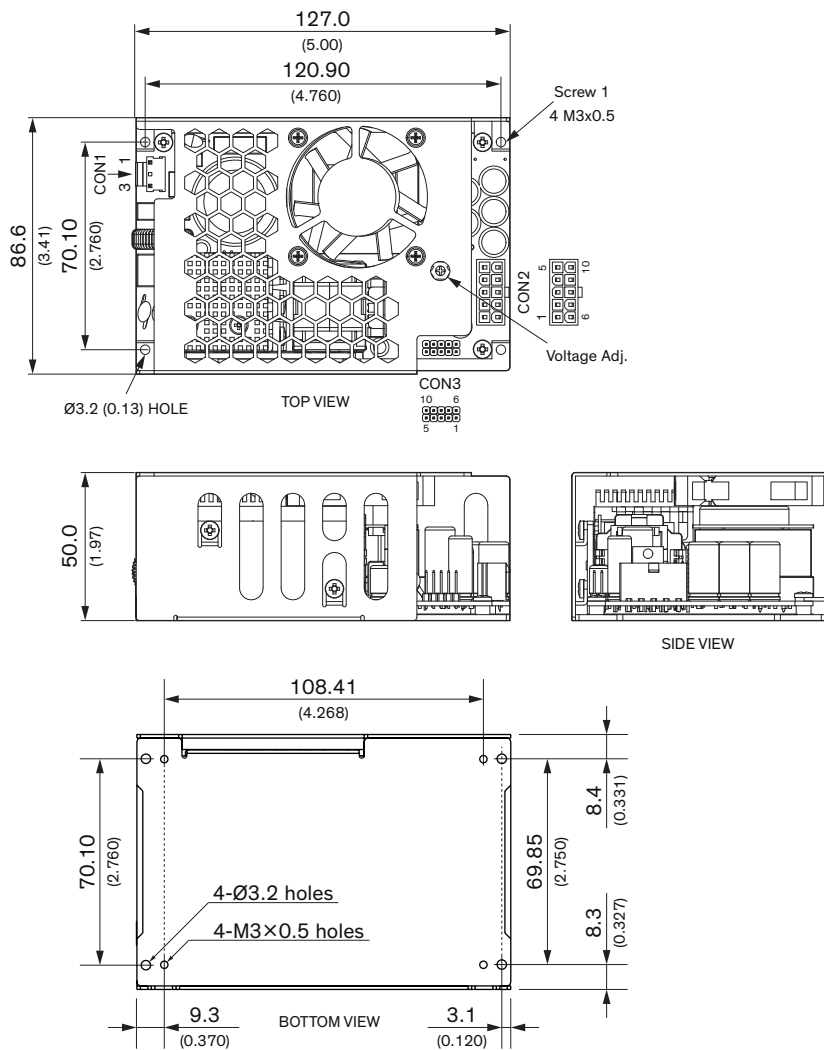
X.XX ±0.25 (X.XXX ±0.01)

FAN dimension: 40×40×10mm Air flow: 9.5 CFM
The fan's durability is lower compared to the power supply and has only 2 years warranty.

Screw locked torque: max. 5.2 kgfcm / 0.51 Nm

All specifications valid at nominal voltage, resistive full load and +25°C after warm-up time, unless otherwise stated.

Optional version with fan on top



Max. screw penetration: 1.3 (0.05)

FAN dimension: 40×40×10mm Air flow: 9.5 CFM
The fan's durability is lower compared to the power supply and has only 2 years warranty.

All dimensions in mm (inch)

Tolerance: X.X ±0.5 (X.XX ±0.02)

X.XX ±0.25 (X.XXX ±0.01)

Screw locked torque: max. 5.2 kgfcm / 0.51 Nm

| Input | |
|-------|----------|
| CON1 | |
| Pin | Function |
| 1 | AC (L) |
| 3 | AC (N) |

| Output | |
|--------|----------|
| CON2 | |
| Pin* | Function |
| 1-5 | +Vout |
| 6-10 | -Vout |

*Terminal rated for 13 A max.
(at higher current connection has to be split)

| Auxiliary | |
|-----------|------------|
| CON3 | |
| Pin | Function |
| 1 | +Fan |
| 2 | +Sense |
| 3 | +Remote |
| 4 | PG |
| 5 | +Standby |
| 6 | -Fan** |
| 7 | -Sense |
| 8 | -Remote** |
| 9 | No pin |
| 10 | -Standby** |

CON1:

Molex housing:

09-50-8031

Molex crimp terminals:

08500106 (2478),

08520112 (6838),

45570

CON2:

Molex housing:

39-01-2105

Molex crimp terminals:

5556,45750

CON3:

Molex housing:

90143-0010

Molex crimp terminals:

90119

**Internally connected with -Vout