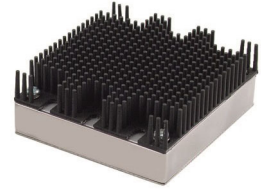


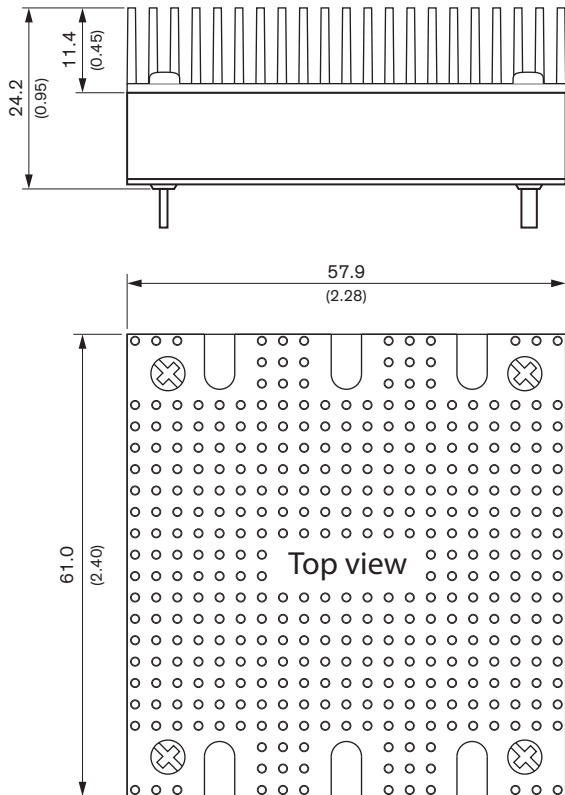
## Heat Sink

## TEP-HS1

<b>Order Code</b>	<b>TEP-HS1</b>
<b>Compatible with</b>	TEP 100, TEP 100WIR, TEP 160, TEP 160WIR, TEP 200WIR, TEP 75WI
<b>Thermal Impedance</b>	Please refer to converter datasheets
<b>Package Content</b>	Heatsink, thermal pad and mounting screws
<b>Material</b>	Aluminum
<b>Surface Finish</b>	Anodized (black)
<b>Weight</b>	25 g (without converter)
<b>RoHS Exemptions</b>	No Exemptions



### Outline Dimensions



Dimensions in mm (inch)