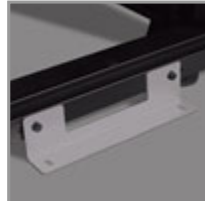


## 45U SmartRack Wide Standard-Depth Rack Enclosure Cabinet with Doors and Side Panels, Shock Pallet Packaging

MODEL NUMBER: SR45UBWDSP1



### Description

Wide version of our standard 45U SmartRack Enclosure but ships mounted on a special pallet that features additional reinforcement and shock-absorbing material. The pallet's protective cushion safeguards the enclosure and the precision components it contains during re-shipping. Reinforced pallets and reusable packaging provide the flexibility to fully configure rack enclosures in a centralized location and safely re-ship them to remote sites, saving significant service costs. They also allow the freedom to custom-configure enclosures with network and server hardware along with UPS systems, PDUs, KVM switches and a variety of other devices prior to final installation. At the desired location the SR45UBWDSP1 can be easily maneuvered with its preinstalled casters and can be secured by adjusting the preinstalled levelers.

The SR45UBWDSP1 is 750mm wide (30") compared to the standard 600mm wide (24") This extra width allows for high density equipment installations. It allows cable management and PDU mounting off to the sides of the rack in order to keep these items out of the airflow for proper cooling.

The SR45UBWDSP1 houses 3000 lbs (1360.8 kgs) of standard 19-inch rack equipment in 45U. Its front and rear pairs of vertical rails have square mounting holes that are adjustable in quarter-inch increments from 4 to 37 inches. Adjustment is quick and an easy-view depth index ensures consistent rail placement without requiring time-consuming measurements. Each rack space within the enclosure is numbered for ready reference.

The top panel of the SR45UBWDSP1 is vented to help remove warm air from the enclosure and draw in cool air by convection. The top panel includes ports for cable routing, and can be quickly removed without tools. The facilitate cable access, the SR45UBSP1 is open-bottom.

All components of the SR45UBWDSP1 are grounded to the enclosure frame. Front and rear threaded grounding points are provided for connection to the facility earth ground. The removable front and rear doors feature quick-release ground wires.

The SR45UBWDSP1 comes with a 5-year product warranty. As part of the SmartRack family it is compatible with Tripp Lite's extensive range of rackmount accessories, enabling you to customize your solution to meet any requirements.

### Features

- This special version of Tripp Lite's SR45UBWD SmartRack Enclosure ships mounted on a "shock pallet" that features additional reinforcement and shock-absorbing material for safe loading and re-shipping
- Heavy-duty ramps (included) allow enclosure to be rolled on and off the pallet during configuration
- Shipping Capacity: shock-pallet supports up to 1250 lbs (566.9 kgs) (281 lbs (127.5 kgs) SmartRack

### Highlights

- 30" (750mm) wide and 42" (1050mm) deep 45U enclosure with doors and side panels
- Ships fully assembled on shock pallet with loading ramps
- 4 interior vertical posts with unthreaded square hole openings
- Massive front to rear ventilation capacity
- 3000 lbs (1360.8 kgs) stationary / 2250 lbs (1020.6 kgs) rolling load capacity
- Locking, removable, reversible front and rear doors
- Locking, removable side panels keyed alike with doors
- Meets all enclosure requirements towards PCI DSS (Payment Card Industry Data Security Standard) Compliance

### Package Includes

- SR45UBWD Rack Enclosure
- (4) side panels
- (4) side panel locks
- (2) door & side panel keys
- (50) M6 screws
- (50) M6 washers
- (50) M6 cage nuts
- Owner's Manual

Enclosure weight + up to 969 lbs (439.5 kgs) of additional equipment), enabling safe loading and re-shipping

- Final Installation Capacity: SmartRack Enclosure supports up to 3000 lbs (1360.8 kgs) of equipment stationary and 2250 lbs (1020.6 kgs) rolling.
- Ships fully assembled for rapid deployment and roll into place on heavy-duty pre-installed casters. (Casters are removable)
- Front and rear sets of equipment mounting rails adjust in 1/4" increments. Adjustment is quick and convenient. The easy-view depth index ensures consistent rail placement without requiring time-consuming measurements.
- Toolless accessory mounting rails (2 rails per enclosure) include slots for quick installation of compatible PDUs and vertical cable managers. Mounting slots are arranged in an industry-standard pattern compatible with a wide variety of accessories. Each rail can accommodate two vertical PDUs or cable managers side-by-side (four items per enclosure).
- Enclosure includes mounting hardware of 50 pieces of M6 cage nuts and 50 pieces of M6 screws.
- Textured powder coat finish for tough resistance to environmental concerns such as deployment in warehouses.
- Massive front to rear ventilation capacity. 65+% open space in door perforation pattern meets or exceeds server manufacturer requirements.
- Maximum usable internal depth of 37 inches/94 cm (front to rear rail).
- Front door is locking, reversible and removable.
- Rear doors are locking and reversible. Split rear door design reduces clearance requirements for service entry allowing the enclosure to be placed closer to a wall.
- Locking removable side panels are 'half size' to make them smaller and lighter improving ease of installation and servicing. Two side panels per side (4 panels total). Side panels are keyed alike to the front and rear doors.
- Built in baying tabs allow enclosures to be combined securely in rows. Center-to-center width can be set at 750mm or 30" to match standard data center floor tiles.
- Leveling feet extend to allow enclosure to be positioned on uneven floors. Levelers are removable.
- Convenient grounding system. All components are grounded to the enclosure frame which includes multiple connections for facility ground. Front and rear doors include quick-release ground wires.
- Open bottom for cable access.
- Top panel has generous cable access holes. Panel can be removed toollessly in seconds without having to disconnect cables first.
- Included stabilizing brackets are used for shipment and can be reattached at the bottom of the enclosure frame on the inside or outside of the rack.
- Meets all enclosure requirements towards PCI DSS (Payment Card Industry Data Security Standard) Compliance
- Compatibility with airflow optimization accessories as well as cable management accessories.

## Specifications

OVERVIEW	
UPC Code	037332175236
Device Compatibility	Patch Panel; Network Switch; UPS; Server
Rack Type	Enclosure
PHYSICAL	
Color	Black

Rack Height	45U
Rack Depth	Standard
Factory Preset Rack Depth (in.)	27.75
Factory Preset Rack Depth (cm)	70.5
Factory Preset Rack Depth (mm)	705
Maximum Device Depth (cm)	93.98
Maximum Device Depth (in.)	37
Maximum Device Depth (mm)	940
Minimum Device Depth (cm)	10.16
Minimum Device Depth (in.)	4
Minimum Device Depth (mm)	102
Shipping Dimensions (hwd / in.)	90.30 x 31.00 x 45.00
Shipping Dimensions (hwd / cm)	229.36 x 78.74 x 114.30
Shipping Weight (lbs.)	390.00
Shipping Weight (kg)	176.90
Unit Dimensions (hwd / in.)	83.750 x 29.530 x 43.000
Unit Dimensions (hwd / cm)	212.725 x 75.01 x 109.22
Unit Weight (lbs.)	340
Unit Weight (kg)	154.22
Weight Capacity - Rolling (kg)	1,021
Weight Capacity - Rolling (lbs.)	2250
Weight Capacity - Stationary (kg)	1,361
Weight Capacity - Stationary (lbs.)	3000
Number of Vertical Mounting Rails	4

## FEATURES & SPECIFICATIONS

Grounding Details	Front and rear door frames
Built-in Cable Management	Yes
Extra Wide	Yes
Pre-Installed Casters	Yes

## STANDARDS & COMPLIANCE

Product Certifications	UL 60950-1
Product Compliance	RoHS; CE (Europe); UKCA

## WARRANTY & SUPPORT



1000 Eaton Boulevard  
Cleveland, OH 44122  
United States

Product Warranty Period (Worldwide)	5-year limited warranty
--	-------------------------



© 2023 Eaton. All Rights Reserved.  
Eaton is a registered trademark. All other trademarks  
are the property of their respective owners.