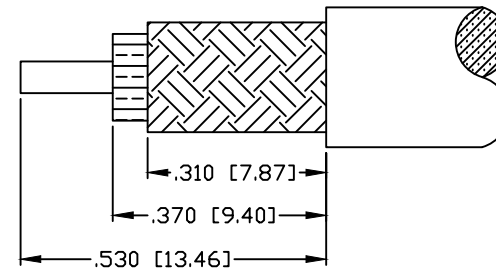
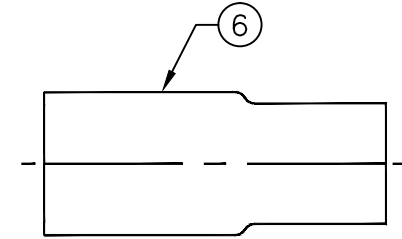
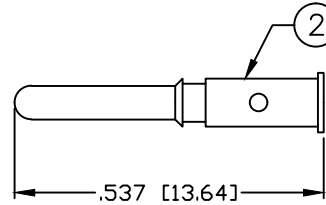
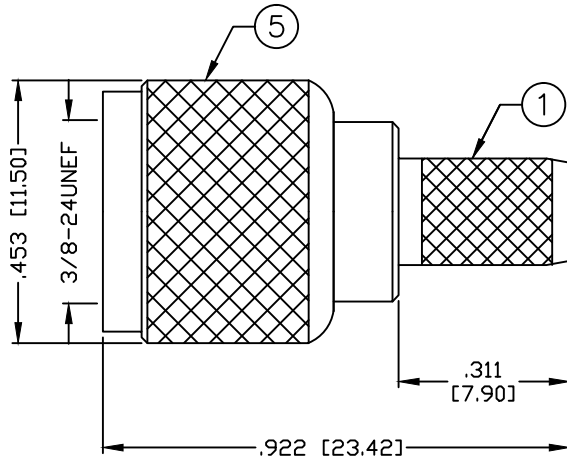


THIS DRAWING CONTAINS INFORMATION PROPRIETARY TO RF INDUSTRIES,  
 ANY UNAUTHORIZED USE OF THIS DRAWING IS EXPRESSLY PROHIBITED  
 WITHOUT WRITTEN PERMISSION FROM RF INDUSTRIES.  
 ANY VIOLATION IS PUNISHABLE UNDER U.S. COPYRIGHT LAWS.

ALL DIMENSIONS ARE REFERENCE ONLY

PART NO. RFU-600-7				
REV	DESCRIPTION	DWN	DATE	APPROVED
-	ENGINEERING RELEASE	CZS	5/26/99	R. RICE



SPECIFICATIONS:

IMPEDANCE: 50 OHMS  
 FOR RG-122, MOTOROLA WHITE PTFE, BELDEN 82907, 88240, 89907

SUGGESTED STRIPPING INSTRUCTIONS  
SUGGESTED CRIMP: .068 & .213

1	BODY	1	BRASS	NICKEL, 100μ
2	PIN	1	BRASS	SILVER, 30μ
3	INSULATOR	1	PTFE	----
4	RETAINING RING	1	SK-5	----
5	COUPLING NUT	1	BRASS	NICKEL, 100μ
6	FERRULE	1	BRASS	NICKEL, 100μ
7				
8				
9				
10				
11				
12				
13				
14				
#	DESCRIPTION	QTY	MATERIAL	FINISH (IN)

000360	
DRAWN	JDM
CHECKED	
ORJ DRAWN	C. ZUNIGA
APPROVALS	DATE
	5/27/01
	5/26/99

UNLESS OTHERWISE SPECIFIED:  
  
 DIMENSIONS ARE IN INCHES AND [MILLIMETERS]  
 UNLESS OTHERWISE NOTED TOLERANCES ARE:  
 DECIMALS      DIAMETER

RF

connectors

DIVISION OF RF INDUSTRIES, LTD.

7610 MIRAMAR RD  
 SAN DIEGO, CA 92126  
 (858) 549-6340  
 (858) 549-6345 FAX

## MINI UHF PLUG

CRIMP

SIZE <b>A</b>	CABLE GROUP <b>M</b>	DWG NO. <b>RFU-600-7</b>	REV <b>-</b>
SCALE: NTS		CAD FILE OUTLINE	SHEET 1 OF 1