

(0.635 mm) .025"

**QMS-PC, QMS-RF SERIES**

# HIGH-SPEED COMBO RF & POWER

## SPECIFICATIONS

For complete specifications and recommended PCB layouts see [www.samtec.com?QMS](http://www.samtec.com?QMS)

**Insulator Material:**

Liquid Crystal Polymer  
Terminal & Ground

**Plane Material:**

Phosphor Bronze

**Plating:**

Au over 50 μ" (1.27 μm) Ni  
(Tin on Ground Plane Tail)

**Current Rating:**

Signal Contact:  
2.6 A per pin  
(2 pins powered)  
Power Contact:  
4.0 A per pin

(4 pins powered per end)  
Ground Plane:  
15.7 A per ground plane  
(1 ground plane powered)

**Voltage Rating:**

300 VAC mated with QFS

**Operating Temp:**

-55 °C to +125 °C

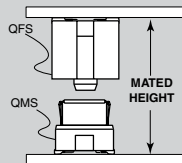
**RoHS Compliant:**

Yes

**Board Mates:**  
QFS-PC, QFS-RA-PC,  
QFS-RF

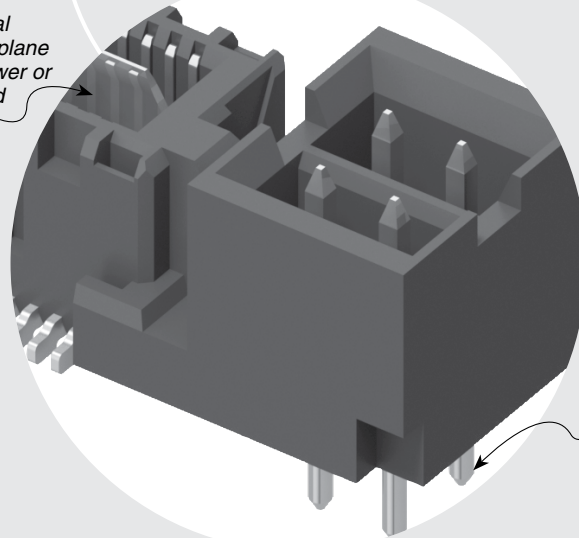
Integral metal plane for power or ground

## APPLICATION



| QMS LEADSTYLE | MATED HEIGHT* |
|---------------|---------------|
| -05.75        | (10.00) .394  |
| -06.75        | (11.00) .433  |

\*Processing conditions will affect mated height. See SO Series for board space tolerances.



Choice of Power and RF options

## PROCESSING

**Lead-Free Solderable:**  
Yes

**SMT Lead Coplanarity:**  
(0.10 mm) .004" max (026-078)

**Board Stacking:**

For applications requiring more than two connectors per board, contact [ipg@samtec.com](mailto:ipg@samtec.com)

## RECOGNITIONS

For complete scope of recognitions see [www.samtec.com/quality](http://www.samtec.com/quality)



FILE NO. E111594

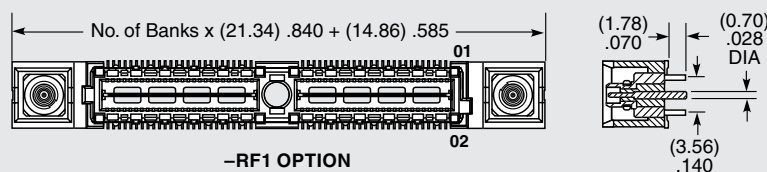
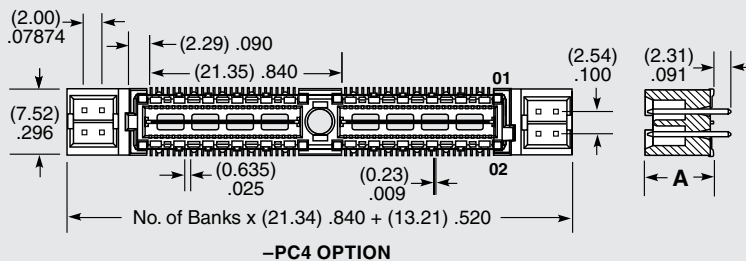
## ALSO AVAILABLE (MOQ Required)

- Other platings
- Differential Pairs
- Retention Pins
- 8 Power Pins/End for (1.60 mm) 0.62" thick board
- 4 or 8 Power Pins/End for (2.36 mm) .093" thick board
- 2 RF Connectors/End
- Hot Pluggable

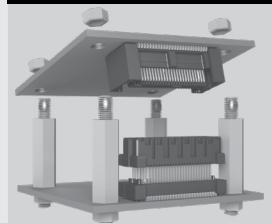
**Note:**  
Some lengths, styles and options are non-standard, non-returnable.

| QMS | NO. OF PINS PER ROW                          | LEAD STYLE                    | PLATING OPTION   | D | END OPTION   | "X"R  |
|-----|--|-------------------------------|--|---|--|---|
|     | -026, -052, -078<br>(52 total pins per bank) | Specify LEAD STYLE from chart | -L<br>= 10 μ" (0.25 μm)<br>Gold on Signal Pins and Ground Plane<br>(Tin on Signal Pin tails, and Ground Plane tails) |   | -PC4<br>= 4 Power Pins per End for (1.60 mm) .062" thick Board (not available with -RF1)<br><br>-RF1<br>= One RF Plug per End (-05.75 only, not available with -PC4) | -TR<br>=Tape & Reel<br><br>-FR<br>= Full Reel Tape & Reel (must order max. quantity per reel; contact Samtec for quantity breaks) |

| LEAD STYLE | A           |
|------------|-------------|
| -05.75     | (5.38) .212 |
| -06.75     | (6.35) .250 |



## OTHER SOLUTIONS



See SO Series for precision machined standoffs.