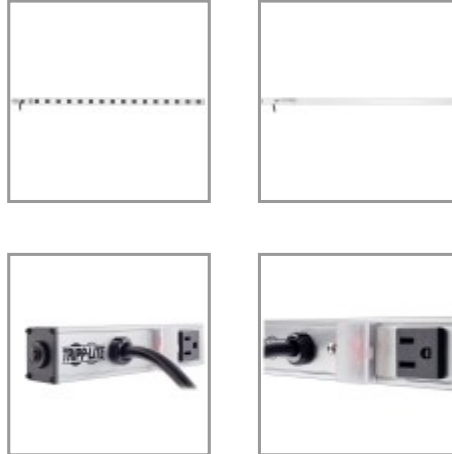


16-Outlet Vertical Power Strip, 15 ft. (4.57 m) Cord, 5-15P, 48 in.

MODEL NUMBER: **PS4816**



Highlights

- 16 outlets
- Convenient and safe covered, on/off switch
- 15-amp circuit breaker
- 15-ft. cord
- 48" length

Package Includes

- PS4816
- Mounting hardware
- Instruction manual

Features

- Sturdy all-metal 48 inch corded strip format with 2.717 inch center-to-center outlet spacing
- Includes 16 NEMA 5-15R output receptacles
- Ideal for horizontal or vertical raceway style power distribution in office, workbench, industrial, networking and telecom applications
- Lighted power switch with locking transparent cover prevents accidental shutoff
- 15 amp electrical capacity with circuit breaker
- 120VAC, 50/60Hz electrical compatibility

Specifications

OVERVIEW	
UPC Code	037332011466
INPUT	
Nominal Input Voltage(s) Supported	120V AC
Recommended Electrical Service	15A 120V
Input Cord Gauge Type	14 gauge; SJT
Voltage Compatibility (VAC)	120
Input Plug Type	NEMA 5-15P
Input Cord Length (ft.)	15
Right-Angle Plug	No

Input Cord Length (m)	4.57
Integrated Cord Clip	No
OUTPUT	
Frequency Compatibility	50 / 60 Hz
Output Receptacles	(16) 5-15R
Circuit Breaker (amps)	15
Transformer Accommodation	(8) Yes
Right-Angle Outlets	No
Outlet Spacing	2.717 in.
USER INTERFACE, ALERTS & CONTROLS	
Switches	Lighted 2 position switch controls power to all outlets
Locking Switch Cover	Transparent on/off switch cover prevents accidental turn-off
PHYSICAL	
Color	Silver
Material of Construction	Aluminum
Power Cord Color	Black
Form Factors Supported	Supports horizontal or vertical raceway style power distribution in office, workbench, industrial, networking and telecom applications
Housing Color	Silver
Included Mounting Accessories	Includes mounting clips
Mounting Holes or Slots	No
Outlets Measurement (Center to Center)	2.71 in.
Receptacle Color	Black
Shipping Dimensions (hwd / in.)	2.40 x 3.40 x 51.20
Shipping Dimensions (hwd / cm)	6.10 x 8.64 x 130.05
Shipping Weight (lbs.)	4.50
Shipping Weight (kg)	2.04
Unit Dimensions (hwd / in.)	1.250 x 1.500 x 48.150
Unit Dimensions (hwd / cm)	122 x 3.8 x 3.8
Unit Weight (lbs.)	4.3
Unit Weight (kg)	1.95
Outlet Spacing	2.717 in.
FEATURES & SPECIFICATIONS	

Antimicrobial	No
Built-In Circuit Breaker	Yes
STANDARDS & COMPLIANCE	
Product Certifications	cUL Listed; UL 1363; UL Listed
Product Compliance	RoHS
WARRANTY & SUPPORT	
Product Warranty Period (Worldwide)	Lifetime limited warranty