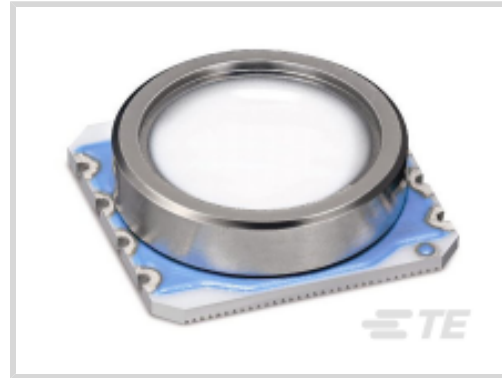




Sensors > Pressure Sensors > Board Mount Pressure Sensors



Board Level Pressure Sensor Type: **Digital Pressure and Altimeter Sensor Modules**

Board Level Pressure Sensor Style: **Absolute**

Pressure: **1000 mbar**

Output/Span: **24 bit ADC**

Board Level Pressure Sensor Accuracy: **± 2.5 mbar**

Features

Product Type Features

Board Level Pressure Sensor Type	Digital Pressure and Altimeter Sensor Modules
Board Level Pressure Sensor Style	Absolute

Electrical Characteristics

Board Level Pressure Sensor Supply Voltage	1.8 – 3.6 V
--	-------------

Dimensions

Dimensions	6.2 x 6.4 mm [.24 x .25 in]
------------	-----------------------------

Usage Conditions

Operating Temperature Range	-40 – 125 °C [-40 – 257 °F]
-----------------------------	-----------------------------

Operation/Application

Resolution	.012
Pressure	1000 mbar
Output/Span	24 bit ADC
Board Level Pressure Sensor Accuracy	± 2.5 mbar

Packaging Features

Board Level Pressure Sensor Package	Surface Mountable
-------------------------------------	-------------------

Other

Sensor Options

No Option

Product Compliance

[For compliance documentation, visit the product page on TE.com>](#)

EU RoHS Directive 2011/65/EU

Not Compliant

EU ELV Directive 2000/53/EC

Not Compliant

China RoHS 2 Directive MIIT Order No 32, 2016

Restricted Materials Above Threshold

EU REACH Regulation (EC) No. 1907/2006

Current ECHA Candidate List: JUNE 2023 (235)
Candidate List Declared Against: JAN 2023 (233)
Does not contain REACH SVHC

Halogen Content

Low Halogen - Br, Cl, F, I < 900 ppm per homogenous material. Also BFR/CFR/PVC Free

Solder Process Capability

Not reviewed for solder process capability

Product Compliance Disclaimer

This information is provided based on reasonable inquiry of our suppliers and represents our current actual knowledge based on the information they provided. This information is subject to change. The part numbers that TE has identified as EU RoHS compliant have a maximum concentration of 0.1% by weight in homogenous materials for lead, hexavalent chromium, mercury, PBB, PBDE, DBP, BBP, DEHP, DIBP, and 0.01% for cadmium, or qualify for an exemption to these limits as defined in the Annexes of Directive 2011/65/EU (RoHS2). Finished electrical and electronic equipment products will be CE marked as required by Directive 2011/65/EU. Components may not be CE marked. Additionally, the part numbers that TE has identified as EU ELV compliant have a maximum concentration of 0.1% by weight in homogenous materials for lead, hexavalent chromium, and mercury, and 0.01% for cadmium, or qualify for an exemption to these limits as defined in the Annexes of Directive 2000/53/EC (ELV). Regarding the REACH Regulation, the information TE provides on SVHC in articles for this part number is based on the latest European Chemicals Agency (ECHA) 'Guidance on requirements for substances in articles' posted at this URL: <https://echa.europa.eu/guidance-documents/guidance-on-reach>

Compatible Parts



Also in the Series | **MEAS MS5803**

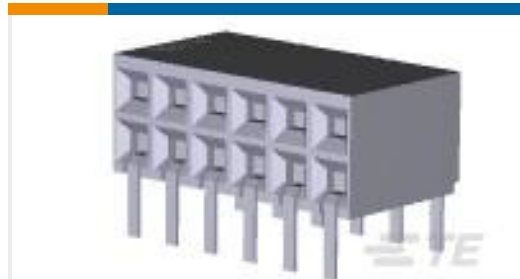


Board Mount Pressure Sensors(11)

Customers Also Bought



TE Part #1-338315-2
25P.HDP20 REC.ASSY



TE Part #5535512-1
12 MODII HORZ DR CE



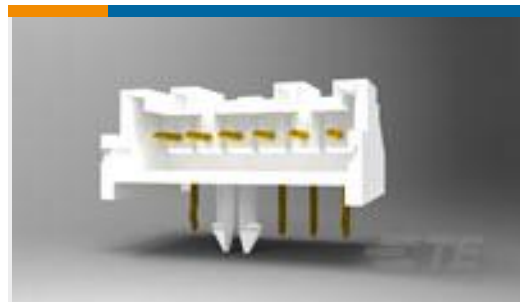
TE Part #2-1393243-0
RTE25012



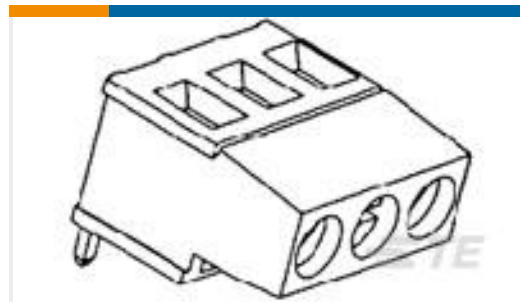
TE Part #5-146130-3
08 MODII HDR DRST SFMNT B/A LF



TE Part #1969442-9
EP 2.5 TPA Housing, 9 Pos



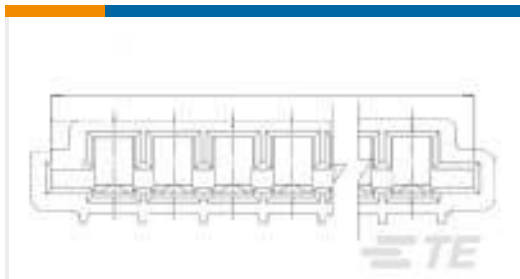
TE Part #1744426-9
Header Housing Assy, EP 2.5 RA, 9 Pos.



TE Part #282851-5
TERMI-BLOK PCB MOUNT 180 5P.5



TE Part #2-1879337-9
CPF 0603 4K87 1% 50PPM 1K RL



TE Part #5-487509-6
TRIOMATE V 7P L=4.064(lead fr)



TE Part #294919-E
SRCP 1,27 10 M 1 SMD 137 E1 094 *
GU-H *

Documents

CAD Files

[3D PDF](#)

[3D](#)

Customer View Model

[ENG_CVM_CVM_MS580301BA01-00_A.2d_dxf.zip](#)

English

Customer View Model

[ENG_CVM_CVM_MS580301BA01-00_A.3d_igs.zip](#)



English

Customer View Model

[ENG_CVM_CVM_MS580301BA01-00_A.3d_stp.zip](#)

English

By downloading the CAD file I accept and agree to the [Terms and Conditions](#) of use.

Datasheets & Catalog Pages

[Data sheet](#)

English