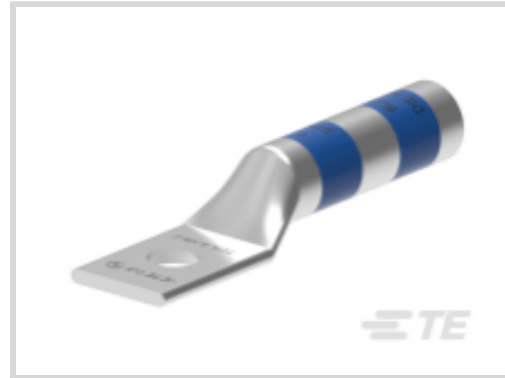




Energy & Power > Power Systems Connectors > Compression Connectors



Compression Connector Product Availability: **AMERICAS**

Compression Connector Technology: **Compression**

Compression Connector Voltage Class: **≤ 35 kV**

Compression Connector Conductor Material: **Copper**

Crimp Type: **Compression**

Features

Product Type Features

Type	Terminal Lug
Compression Connector Technology	Compression
Compression Connector Material	Copper
Underground Network Component Type	Terminal Lug

Configuration Features

Number of Holes	1
-----------------	---

Electrical Characteristics

Compression Connector Voltage Class	≤ 35 kV
-------------------------------------	---------

Body Features

Barrel Type	Long
Conductor Type	Stranded
Compression Connector Conductor Material	Copper

Contact Features

Crimp Type	Compression
------------	-------------

Dimensions

Barrel Diameter	11.3 mm[.4 in]
Lug Width	20.8 mm[.82 in]



Barrel Length	38.1 mm[1.5 in]
Lug Length	81.5 mm[3.21 in]
Compression Connector Conductor Size	00 AWG
Compression Connector Stud Size	1/2

Operation/Application

Free of Lead, Cadmium, Heavy Metals	Yes
Energized Installation	No
Application Type	Power Distribution

Industry Standards

CSA Certified	Yes
UL Listed	Yes
NEMA Spacing (2-Hole)	No

Product Availability

Compression Connector Product Availability	AMERICAS
--	----------

Other

Die Color Code	Brown
----------------	-------

Product Compliance

[For compliance documentation, visit the product page on TE.com>](#)

EU RoHS Directive 2011/65/EU	Compliant
EU ELV Directive 2000/53/EC	Not Yet Reviewed
China RoHS 2 Directive MIIT Order No 32, 2016	No Restricted Materials Above Threshold
EU REACH Regulation (EC) No. 1907/2006	Current ECHA Candidate List: JUNE 2023 (235) Candidate List Declared Against: JAN 2023 (233) Does not contain REACH SVHC
Halogen Content	Low Halogen - Br, Cl, F, I < 900 ppm per homogenous material. Also BFR/CFR/PVC Free
Solder Process Capability	Not applicable for solder process capability

Product Compliance Disclaimer

This information is provided based on reasonable inquiry of our suppliers and represents our current actual knowledge based on the information they provided. This information is subject to change. The part numbers that TE has identified as EU RoHS compliant have a maximum concentration of 0.1% by weight in homogenous materials for lead, hexavalent chromium, mercury, PBB, PBDE, DBP, BBP, DEHP, DIBP, and 0.01% for cadmium, or qualify for an exemption to these

limits as defined in the Annexes of Directive 2011/65/EU (RoHS2). Finished electrical and electronic equipment products will be CE marked as required by Directive 2011/65/EU. Components may not be CE marked. Additionally, the part numbers that TE has identified as EU ELV compliant have a maximum concentration of 0.1% by weight in homogenous materials for lead, hexavalent chromium, and mercury, and 0.01% for cadmium, or qualify for an exemption to these limits as defined in the Annexes of Directive 2000/53/EC (ELV). Regarding the REACH Regulation, the information TE provides on SVHC in articles for this part number is based on the latest European Chemicals Agency (ECHA) 'Guidance on requirements for substances in articles' posted at this URL: <https://echa.europa.eu/guidance-documents/guidance-on-reach>

Compatible Parts



TE Part # 2107475-2
UNIPRESS 6/120 +COF+CHARG



TE Part # 2107725-1
AUTOPRESS L62+ COF+CHARG




TE Part # 2107730-1
AutoPress 80 18V+COF+CHARG



TE Part # 2107733-4
AUTOPRESS C120 18V+COF+CHARG 110V

Also in the Series | Raychem TCTL



Compression Connectors(98)

Customers Also Bought



TE Part #325302
TERMINAL,AMPOWER 1/0 5/16



TE Part #5-1879234-7
SMD Power Resistor: 7 Watt, 200-2M Ohm



TE Part #184064-1
TERMINAL,SOLIS R 8 10MM



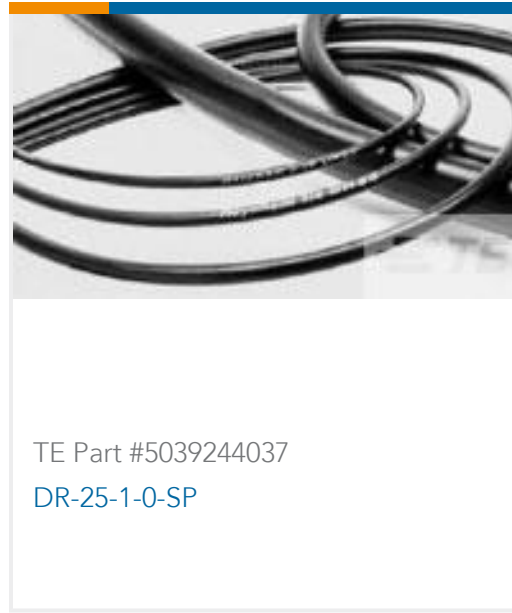
TE Part #3-641208-4
04P MTA156 HDR ASSY FL ST 30AU



TE Part #3-2176403-2
3550 20R 1%



TE Part #2-2176347-5
CRGCQ 2010 1K0 1%



TE Part #5039244037
DR-25-1-0-SP

Documents

Product Drawings

[TCTL-2/0-1/2-U](#)

English

[TCTL-2/0-1/2-U](#)

English

Datasheets & Catalog Pages

[ALUMINUM COMPRESSION NARROW PALM LUGS](#)

English