

929053-1 ✓ ACTIVE

AMP | MQS

TE Internal #: 929053-1

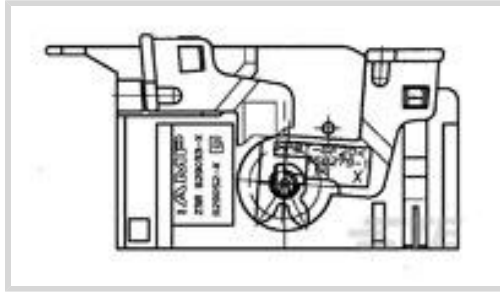
Automotive Connector Caps & Covers, Cover Assembly, Gray, PBT

GF, 32 Position, -40 – 185 °F [-40 – 85 °C], MQS

[View on TE.com >](#)



Connectors > Automotive Connectors > Automotive Connector Accessories > Automotive Connector Caps & Covers



Protection & Strain Relief Accessory Type: **Cover Assembly**

Strain Relief: **With**

Primary Product Color: **Gray**

Primary Product Material: **PBT GF**

Number of Positions: **32**

Features

Product Type Features

Protection & Strain Relief Accessory Type	Cover Assembly
---	----------------

Configuration Features

Compatible With Connector Code	A
--------------------------------	---

Number of Positions	32
---------------------	----

Body Features

Primary Product Color	Gray
-----------------------	------

Primary Product Material	PBT GF
--------------------------	--------

Mechanical Attachment

Strain Relief	With
---------------	------

Usage Conditions

Operating Temperature (Max)	85 °C[185 °F]
-----------------------------	---------------

Operating Temperature Range	-40 – 85 °C[-40 – 185 °F]
-----------------------------	---------------------------

Packaging Features

Packaging Quantity	500
--------------------	-----

Packaging Method	Carton
------------------	--------

Product Compliance

[For compliance documentation, visit the product page on TE.com>](#)



EU RoHS Directive 2011/65/EU	Compliant
EU ELV Directive 2000/53/EC	Compliant
China RoHS 2 Directive MIIT Order No 32, 2016	No Restricted Materials Above Threshold
EU REACH Regulation (EC) No. 1907/2006	Current ECHA Candidate List: JUNE 2023 (235) Candidate List Declared Against: JUNE 2023 (235) Does not contain REACH SVHC
Halogen Content	Not Low Halogen - contains Br or Cl > 900 ppm.
Solder Process Capability	Not applicable for solder process capability

Product Compliance Disclaimer

This information is provided based on reasonable inquiry of our suppliers and represents our current actual knowledge based on the information they provided. This information is subject to change. The part numbers that TE has identified as EU RoHS compliant have a maximum concentration of 0.1% by weight in homogenous materials for lead, hexavalent chromium, mercury, PBB, PBDE, DBP, BBP, DEHP, DIBP, and 0.01% for cadmium, or qualify for an exemption to these limits as defined in the Annexes of Directive 2011/65/EU (RoHS2). Finished electrical and electronic equipment products will be CE marked as required by Directive 2011/65/EU. Components may not be CE marked. Additionally, the part numbers that TE has identified as EU ELV compliant have a maximum concentration of 0.1% by weight in homogenous materials for lead, hexavalent chromium, and mercury, and 0.01% for cadmium, or qualify for an exemption to these limits as defined in the Annexes of Directive 2000/53/EC (ELV). Regarding the REACH Regulation, the information TE provides on SVHC in articles for this part number is based on the latest European Chemicals Agency (ECHA) 'Guidance on requirements for substances in articles' posted at this URL: <https://echa.europa.eu/guidance-documents/guidance-on-reach>

Compatible Parts

TE Part # CAT-SIGH262
Signal Header

TE Part # 968265-1
32POS MQS REC

Also in the Series | MQS

Automotive Connector Caps & Covers (138)

Automotive Connector EMC Shielding (3)

Automotive Connector Locks & Position Assurance(30)

Automotive Housings(507)



Automotive Terminals(104)



Connector Seals & Cavity Plugs(27)



Insertion & Extraction Tools(42)

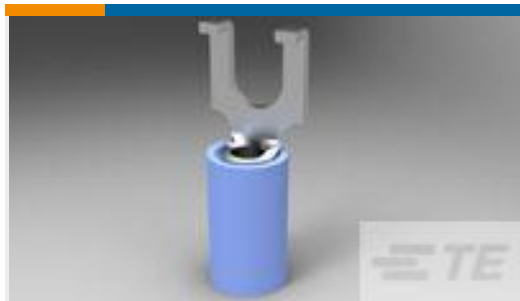


Other Automotive Connector Accessories(14)

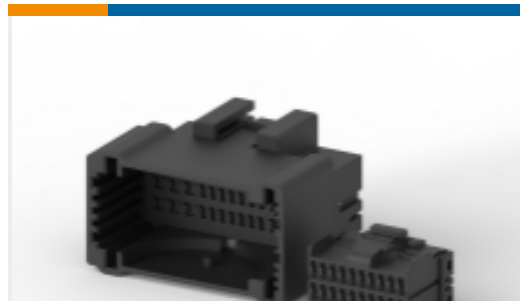


PCB Headers & Receptacles(213)

Customers Also Bought



TE Part #2-320862-1
TERMINAL,PIDG SPD FLG 16-14 8



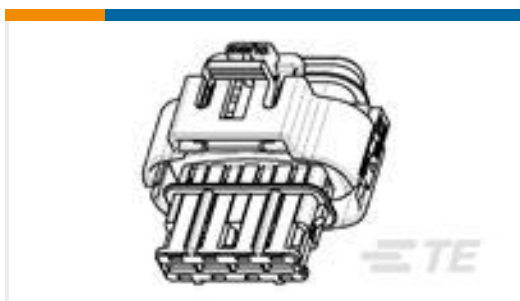
TE Part #936131-1
MULTILOCK, CONNECTOR HOUSING



TE Part #2066034-2
2.8MM SLD 2P PLUG ASSEMBLY



TE Part #284223-4
24 POS.KIT ASSY FOR AIR BAG (B



TE Part #1480968-1
ASSY 4 POSN. 2,8MM REC.



TE Part #281872-1
5MM PITCH TAB/RECPT CONN



TE Part #5-1897638-5
C.E BOX ASSY-BLM F/L-1FAN,4PW,
STD

Documents

Product Drawings
MQS ABDEKA M.HEB32P

English

CAD Files

3D PDF

3D

Customer View Model

ENG_CVM_CVM_929053-1_C.2d_dxf.zip



English

Customer View Model

[ENG_CVM_CVM_929053-1_C.3d_igs.zip](#)

English

Customer View Model

[ENG_CVM_CVM_929053-1_C.3d_stp.zip](#)

English

By downloading the CAD file I accept and agree to the [Terms and Conditions](#) of use.

Product Specifications

[Application Specification](#)

English