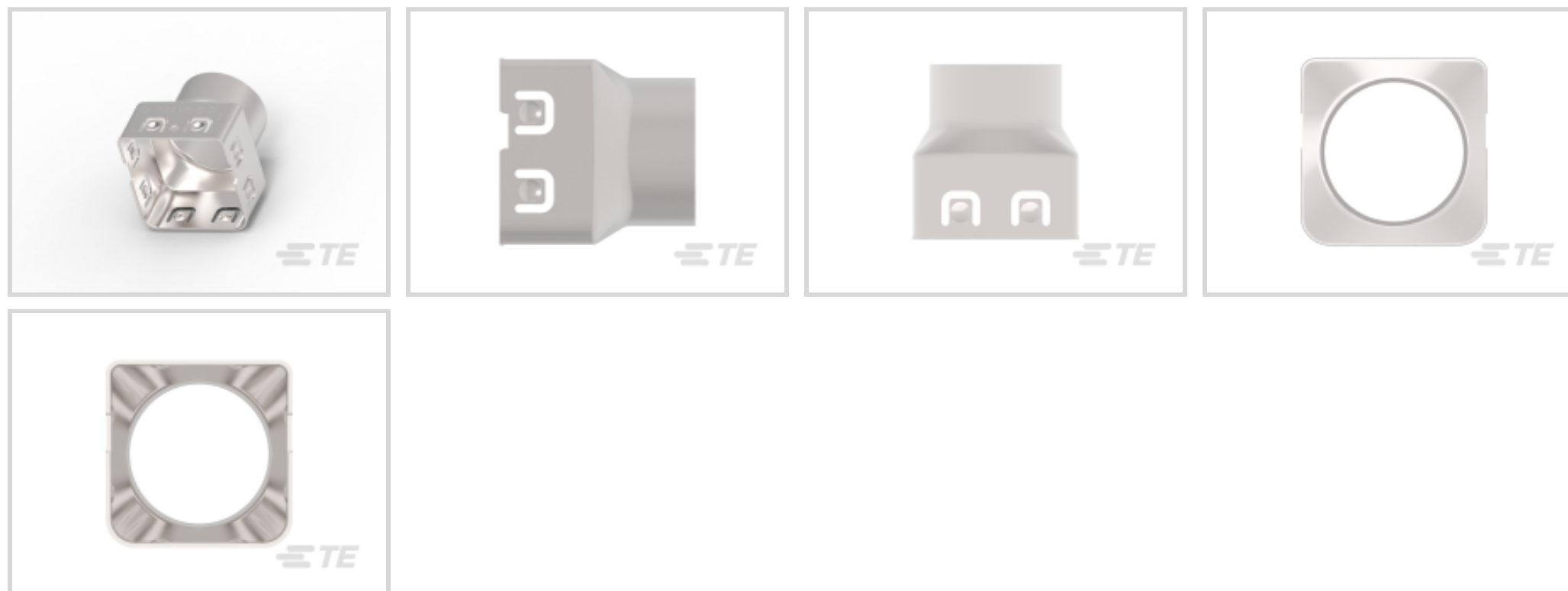




Connectors > Automotive Connectors > Automotive Connector Accessories > Automotive Connector EMC Shielding



Connector Shielding Accessory Type: **Crimp Ferrule**

Primary Product Material: **Copper Alloy**

Features

Product Type Features

Connector Shielding Accessory Type	Crimp Ferrule
------------------------------------	---------------

Body Features

Primary Product Material	Copper Alloy
--------------------------	--------------

Industry Standards

Industry Standard	LV214
-------------------	-------

Product Compliance

[For compliance documentation, visit the product page on TE.com>](#)

EU RoHS Directive 2011/65/EU	Compliant
EU ELV Directive 2000/53/EC	Compliant
China RoHS 2 Directive MIIT Order No 32, 2016	No Restricted Materials Above Threshold
EU REACH Regulation (EC) No. 1907/2006	Current ECHA Candidate List: JUNE 2023 (235) Candidate List Declared Against: JUNE 2023 (235) Does not contain REACH SVHC
Halogen Content	Low Halogen - Br, Cl, F, I < 900 ppm per homogenous material. Also BFR/CFR/PVC Free

Solder Process Capability

Not reviewed for solder process capability

Product Compliance Disclaimer

This information is provided based on reasonable inquiry of our suppliers and represents our current actual knowledge based on the information they provided. This information is subject to change. The part numbers that TE has identified as EU RoHS compliant have a maximum concentration of 0.1% by weight in homogenous materials for lead, hexavalent chromium, mercury, PBB, PBDE, DBP, BBP, DEHP, DIBP, and 0.01% for cadmium, or qualify for an exemption to these limits as defined in the Annexes of Directive 2011/65/EU (RoHS2). Finished electrical and electronic equipment products will be CE marked as required by Directive 2011/65/EU. Components may not be CE marked. Additionally, the part numbers that TE has identified as EU ELV compliant have a maximum concentration of 0.1% by weight in homogenous materials for lead, hexavalent chromium, and mercury, and 0.01% for cadmium, or qualify for an exemption to these limits as defined in the Annexes of Directive 2000/53/EC (ELV). Regarding the REACH Regulation, the information TE provides on SVHC in articles for this part number is based on the latest European Chemicals Agency (ECHA) 'Guidance on requirements for substances in articles' posted at this URL: <https://echa.europa.eu/guidance-documents/guidance-on-reach>

Compatible Parts



TE Part # 1-2141154-2
2POS,8MM HV,REC HSG,90DEG,ASSY, SEALED



TE Part # 1-2141154-1
2POS,8MM HV,REC HSG,90DEG,ASSY, SEALED



TE Part # 1-2141166-1
3POS,8MM HV,REC HSG,90DEG,ASSY, SEALED



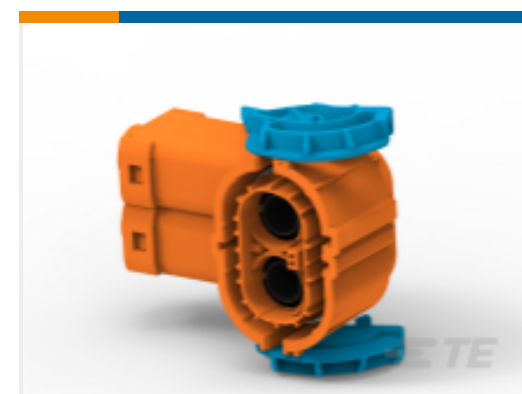
TE Part # 1-2141166-2
3POS,8MM HV,REC HSG,90DEG,ASSY, SEALED



TE Part # 1-2286713-1
2POS,8MM HV,REC HSG,90DEG,ASSY, SEALED



TE Part # 1-2286713-2
2POS,8MM HV,REC HSG,90DEG,ASSY, SEALED



TE Part # 1-2286713-3
2POS,8MM HV,REC HSG,90DEG,ASSY, SEALED



TE Part # 1-2286945-1
2POS,HVP800,90 DEG,50 SQMM,COD A



TE Part # 1-2286945-3
2POS,HVP800,90 DEG,50 SQMM,COD A



TE Part # 1-2286945-5
2POS,HVP800,90 DEG,50 SQMM,COD A



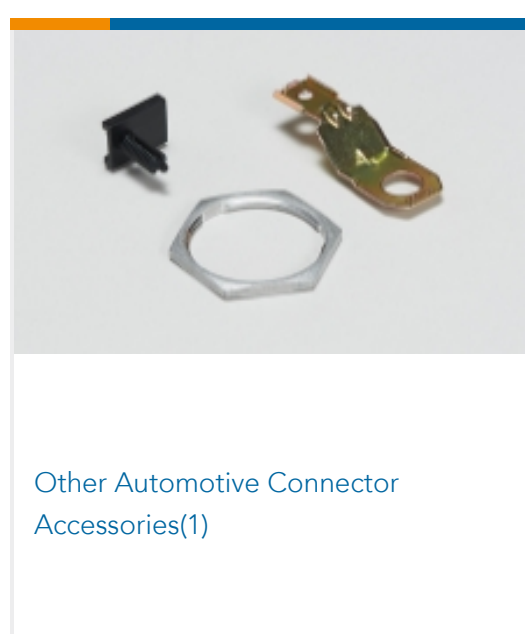
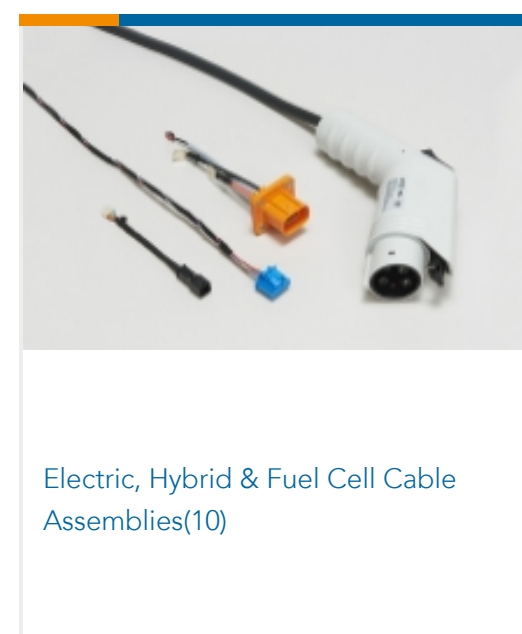
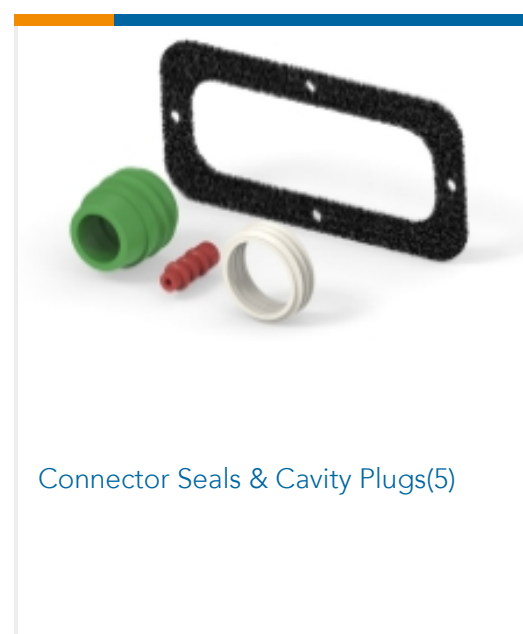
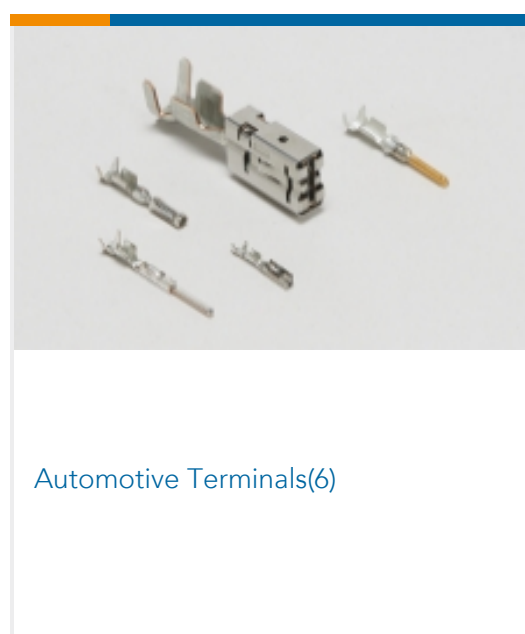
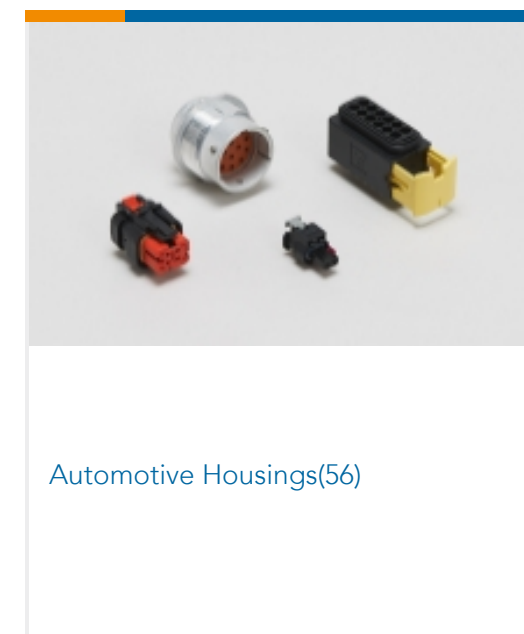
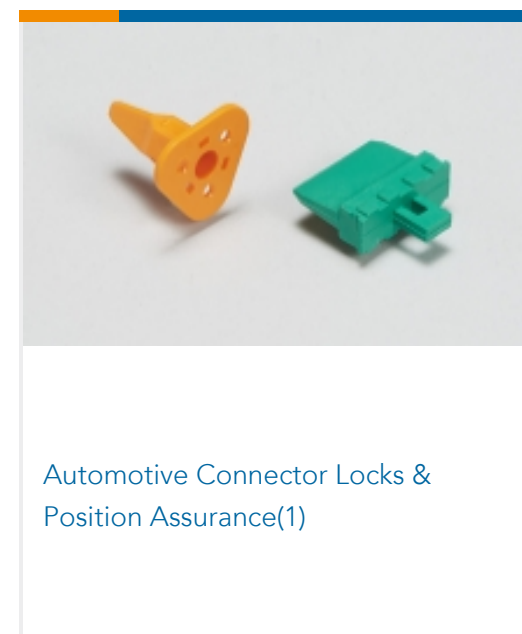
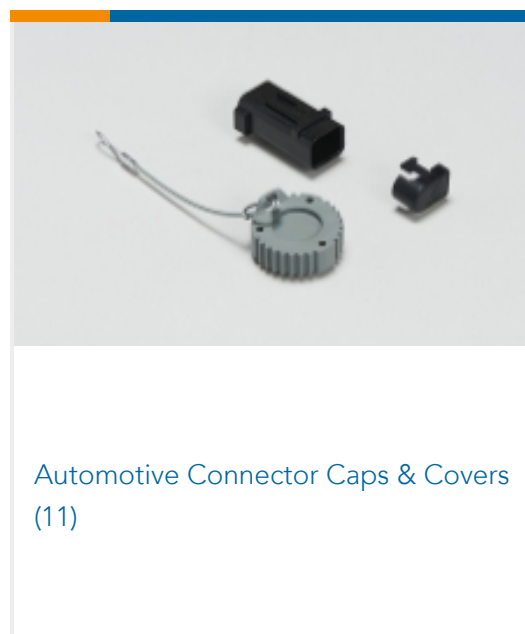
TE Part # 1-2286946-1
2POS,HVP800,90 DEG,35 SQMM,COD A



TE Part # 1-2286946-3
2POS,HVP800,90 DEG,35 SQMM,COD A



Also in the Series | AMP+ HVP800



Customers Also Bought



Documents

Product Drawings

CU ALLOY, SHIELD, 8MM HV, CONN HSG, 90 DEG

German

CAD Files

3D PDF

3D

Customer View Model

[ENG_CVM_CVM_9-2141158-2_1.2d_dxf.zip](#)

English

Customer View Model

[ENG_CVM_CVM_9-2141158-2_1.3d_igs.zip](#)

English

Customer View Model

[ENG_CVM_CVM_9-2141158-2_1.3d_stp.zip](#)

English

By downloading the CAD file I accept and agree to the [Terms and Conditions](#) of use.

Product Specifications



Application Specification

English

Instruction Sheets

Instruction Sheet (U.S.)

English

Instruction Sheet (U.S.)

Instruction Sheet (U.S.)

English

Instruction Sheet (U.S.)

English