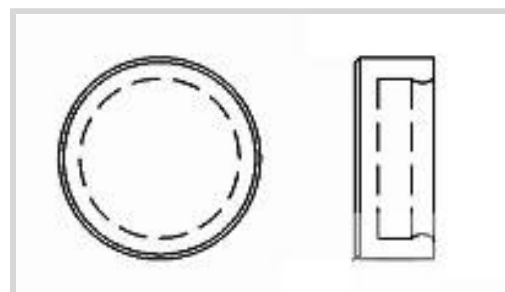




Relays, Contactors & Switches > Switches > Switch Seals & Accessories



Switch Boot Accessory Type: **Cap**

Switch Boot & Accessory For Use With: **Series MPG**

Style: **Round**

Switch Boot & Accessory Color: **Red**

## Features

### Product Type Features

Product Type	Accessory
Illuminated	No
Switch Boot Accessory Type	Cap
Style	Round

### Configuration Features

Tactile	No
---------	----

### Body Features

Cap Color	Red
Switch Boot & Accessory Color	Red

### Mechanical Attachment

Attachment Method	Snap-Fit
-------------------	----------

### Housing Features

Process Sealed	No
----------------	----

### Dimensions

Cap Height	3.51 mm[.138 in]
Cap Diameter	8.99 mm[.354 in]

### Operation/Application

Switch Boot & Accessory For Use With	Series MPG
--------------------------------------	------------

### Packaging Features

--	--

Packaging Method	Loose Piece
------------------	-------------

### Product Compliance

[For compliance documentation, visit the product page on TE.com>](#)

EU RoHS Directive 2011/65/EU	Not Compliant
EU ELV Directive 2000/53/EC	Not Yet Reviewed
China RoHS 2 Directive MIIT Order No 32, 2016	No Restricted Materials Above Threshold
EU REACH Regulation (EC) No. 1907/2006	<p>Current ECHA Candidate List: JAN 2023 (233)                  Candidate List Declared Against: JUL 2017 (174)                  SVHC &gt; Threshold:                  DEHP (27%)</p> <p><b>Article Safe Usage Statements:</b>                  Do not eat, drink or smoke when using this product. Wash thoroughly after handling. Recycle if possible and dispose of the article by following all applicable governmental regulations relevant to your geographic location.</p>
Halogen Content	Low Halogen - Br, Cl, F, I < 900 ppm per homogenous material. Also BFR/CFR/PVC Free
Solder Process Capability	Wave solder capable to 265°C

#### Product Compliance Disclaimer

This information is provided based on reasonable inquiry of our suppliers and represents our current actual knowledge based on the information they provided. This information is subject to change. The part numbers that TE has identified as EU RoHS compliant have a maximum concentration of 0.1% by weight in homogenous materials for lead, hexavalent chromium, mercury, PBB, PBDE, DBP, BBP, DEHP, DIBP, and 0.01% for cadmium, or qualify for an exemption to these limits as defined in the Annexes of Directive 2011/65/EU (RoHS2). Finished electrical and electronic equipment products will be CE marked as required by Directive 2011/65/EU. Components may not be CE marked. Additionally, the part numbers that TE has identified as EU ELV compliant have a maximum concentration of 0.1% by weight in homogenous materials for lead, hexavalent chromium, and mercury, and 0.01% for cadmium, or qualify for an exemption to these limits as defined in the Annexes of Directive 2000/53/EC (ELV). Regarding the REACH Regulation, the information TE provides on SVHC in articles for this part number is based on the latest European Chemicals Agency (ECHA) 'Guidance on requirements for substances in articles' posted at this URL: <https://echa.europa.eu/guidance-documents/guidance-on-reach>

### Customers Also Bought

 <p>TE Part #K1127139 Switch guard 07-0-0-30</p>	 <p>TE Part #1-2823446-4 M12 Straight Crimped Strain Relief</p>	 <p>TE Part #K1003000 Switch guard 08-0-0-02</p>	 <p>TE Part #K1143046 Relay 31-313-12-S</p>
---	---	---	--



## Documents

### CAD Files

[3D PDF](#)

[3D](#)

#### Customer View Model

[ENG\\_CVM\\_CVM\\_7-1437627-2\\_A\\_c-7-1437627-2-a.2d\\_dxf.zip](#)

English

#### Customer View Model

[ENG\\_CVM\\_CVM\\_7-1437627-2\\_A\\_c-7-1437627-2-a.3d\\_igs.zip](#)

English

#### Customer View Model

[ENG\\_CVM\\_CVM\\_7-1437627-2\\_A\\_c-7-1437627-2-a.3d\\_stp.zip](#)

English

By downloading the CAD file I accept and agree to the [Terms and Conditions](#) of use.