

696735-1 ✓ ACTIVE

SOLISTRAND

TE Internal #: 696735-1

Closed Ring Tongue Terminal, 0 AWG, 5/16 / M8 Stud Size, 8.33 mm [.328 in] Stud Diameter, Closed Barrel, 45 Bend, Nickel, Uninsulated

[View on TE.com >](#)



Terminals & Splices > Ring Terminals



Ring Terminal Product Type: Closed Ring Tongue Terminal

Wire Size: 83700 – 119500 CMA

Stud Size: 5/16, M8

Features

Product Type Features

Terminal Features	Sheared
Ring Terminal Product Type	Closed Ring Tongue Terminal
Stud Size	5/16, M8
Sealable	No
Wire Insulation Support Retention Type	Insulation Support

Configuration Features

Number of Holes	1
-----------------	---

Contact Features

Barrel Type	Closed
Terminal Orientation	45 Bend
Terminal Plating Material	Nickel

Mechanical Attachment

Wire Insulation Support	Without
-------------------------	---------

Dimensions

Wire Size	83700 – 119500 CMA
-----------	--------------------



Stud Diameter	8.33 mm[.328 in]
---------------	------------------

Tongue Thickness	1.78 mm[.07 in]
------------------	-----------------

Product Length	40.74 mm[1.604 in]
----------------	--------------------

Barrel Inside Diameter	11.28 mm[.444 in]
------------------------	-------------------

### Usage Conditions

Insulation Option	Uninsulated
-------------------	-------------

Operating Temperature Range	343 °C[649 °F]
-----------------------------	----------------

### Industry Standards

Government Qualified Terminal	No
-------------------------------	----

### Packaging Features

Packaging Quantity	50
--------------------	----

Packaging Method	Loose Piece
------------------	-------------

### Product Compliance

[For compliance documentation, visit the product page on TE.com>](#)

EU RoHS Directive 2011/65/EU	Compliant
------------------------------	-----------

EU ELV Directive 2000/53/EC	Compliant
-----------------------------	-----------

China RoHS 2 Directive MIIT Order No 32, 2016	No Restricted Materials Above Threshold
---	---

EU REACH Regulation (EC) No. 1907/2006	Current ECHA Candidate List: JUNE 2023 (235) Candidate List Declared Against: JUNE 2023 (235) Does not contain REACH SVHC
--	---

Halogen Content	Low Halogen - Br, Cl, F, I < 900 ppm per homogenous material. Also BFR/CFR/PVC Free
-----------------	---

Solder Process Capability	Not applicable for solder process capability
---------------------------	--

#### Product Compliance Disclaimer

This information is provided based on reasonable inquiry of our suppliers and represents our current actual knowledge based on the information they provided. This information is subject to change. The part numbers that TE has identified as EU RoHS compliant have a maximum concentration of 0.1% by weight in homogenous materials for lead, hexavalent chromium, mercury, PBB, PBDE, DBP, BBP, DEHP, DIBP, and 0.01% for cadmium, or qualify for an exemption to these limits as defined in the Annexes of Directive 2011/65/EU (RoHS2). Finished electrical and electronic equipment products will be CE marked as required by Directive 2011/65/EU. Components may not be CE marked. Additionally, the part numbers that TE has identified as EU ELV compliant have a maximum concentration of 0.1% by weight in homogenous materials for lead, hexavalent chromium, and mercury, and 0.01% for cadmium, or qualify for an exemption to these limits as defined in the Annexes of Directive 2000/53/EC (ELV). Regarding the REACH Regulation, the information TE provides on SVHC in articles for this part number is based on the latest European Chemicals Agency (ECHA) 'Guidance on requirements for substances in articles' posted at this URL: <https://echa.europa.eu/guidance-documents/guidance-on-reach>

## Compatible Parts



TE Part # 1490414-3  
HYP10 SOLIS HD 1/0AWG INDENTER



TE Part # 601075  
BANTAM ROTA-CRIMP TOOL



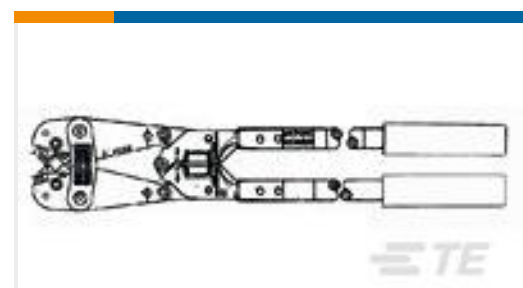
TE Part # 1490413-5  
HYP10 SOLIS 1/0AWG NEST



TE Part # 45436  
HYP8/10 SOLIS 1/0AWG DIE SET



TE Part # 48131  
HYP8 SOLIS 1/0-4/0AWG INDENTER



TE Part # 600850  
ROTO-CRIMP TOOL (ASI)



TE Part # 48132  
HYP8 SOLIS 1/0AWG NEST

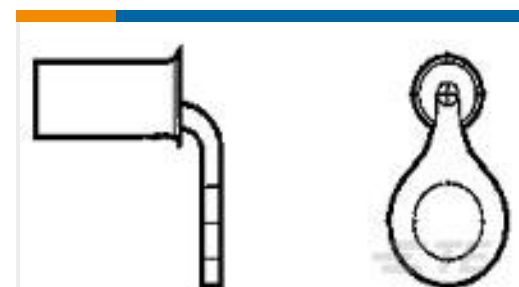
## Customers Also Bought



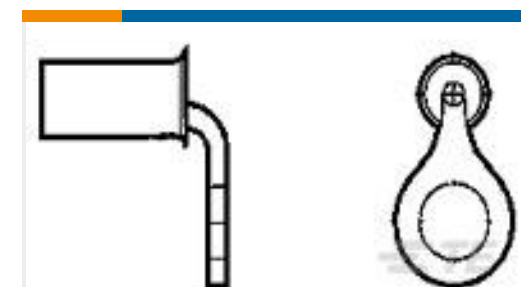
TE Part #36921  
TERMINAL,SOLIS R 2/0 1/4



TE Part #36922  
TERMINAL,SOLIS R 2/0 5/16



TE Part #322906  
TERMINAL,SOLIS R 90DEG 1/0 3/8



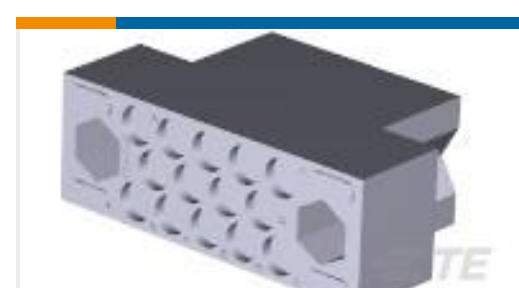
TE Part #321867-1  
TERM,SOLIS R 1/0 5/16 90DEG



TE Part #170721-2  
SOLISTRAND RINGTONG



TE Part #YDTS26F11-98PNV001  
PLUG ASSY



TE Part #201298-1  
FEMALE BLOCK 14 PL.



TE Part #CS9493-000  
SEB-D



TE Part #36925  
TERMINAL,SOLIS R 2/0 1/2



## Documents

### Product Drawings

[STRATOTHERM,1/0,5/16,NIPL,45](#)

English

---

### CAD Files

[3D PDF](#)

3D

Customer View Model

[ENG\\_CVM\\_CVM\\_696735-1\\_D.2d\\_dxf.zip](#)

English

Customer View Model

[ENG\\_CVM\\_CVM\\_696735-1\\_D.3d\\_igs.zip](#)

English

Customer View Model

[ENG\\_CVM\\_CVM\\_696735-1\\_D.3d\\_stp.zip](#)

English

By downloading the CAD file I accept and agree to the [Terms and Conditions](#) of use.

---

### Datasheets & Catalog Pages

[RADIATION\\_RESISTANT\\_PRE-INSULATED\\_TERMINALS\\_SPLICES](#)

English