

69561-4 ✓ ACTIVE

AMP

TE Internal #: 69561-4

Hand Crimping Tools, Removable/Interchangeable, TE Product Specification (114-), Manual, IDC Tooling

[View on TE.com >](#)



Application Tooling > Hand Crimping Tools



Die Sets Type: **Removable/Interchangeable**

Specification Type: **TE Product Specification (114-)**

TE Certification: **Cannot be Certified**

Power Technology Type: **Manual**

Tooling Type: **IDC Tooling**

Features

Other

Crimp Form-Wire Barrel Type	Insulation Displacement
Die Sets Type	Removable/Interchangeable
Specification Type	TE Product Specification (114-)
TE Certification	Cannot be Certified
Power Technology Type	Manual
Tooling Type	IDC Tooling

Product Compliance

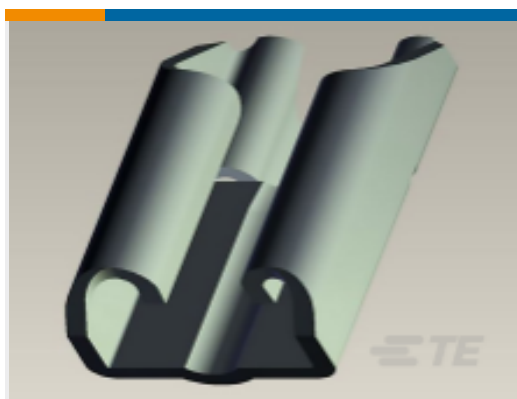
[For compliance documentation, visit the product page on TE.com>](#)

EU RoHS Directive 2011/65/EU	Compliant
EU ELV Directive 2000/53/EC	Out of Scope
China RoHS 2 Directive MIIT Order No 32, 2016	No Restricted Materials Above Threshold
EU REACH Regulation (EC) No. 1907/2006	Current ECHA Candidate List: JUNE 2023 (235) Candidate List Declared Against: JUNE 2023 (235) Does not contain REACH SVHC
Halogen Content	Low Halogen - Br, Cl, F, I < 900 ppm per homogenous material. Also BFR/CFR/PVC Free
Solder Process Capability	Not applicable for solder process capability

Product Compliance Disclaimer

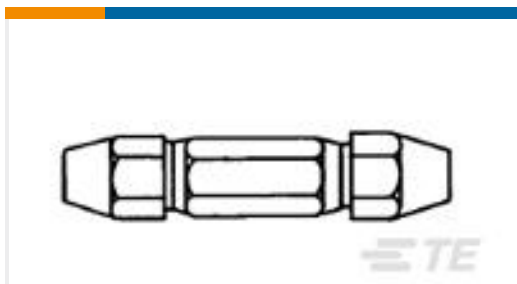
This information is provided based on reasonable inquiry of our suppliers and represents our current actual knowledge based on the information they provided. This information is subject to change. The part numbers that TE has identified as EU RoHS compliant have a maximum concentration of 0.1% by weight in homogenous materials for lead, hexavalent chromium, mercury, PBB, PBDE, DBP, BBP, DEHP, DIBP, and 0.01% for cadmium, or qualify for an exemption to these limits as defined in the Annexes of Directive 2011/65/EU (RoHS2). Finished electrical and electronic equipment products will be CE marked as required by Directive 2011/65/EU. Components may not be CE marked. Additionally, the part numbers that TE has identified as EU ELV compliant have a maximum concentration of 0.1% by weight in homogenous materials for lead, hexavalent chromium, and mercury, and 0.01% for cadmium, or qualify for an exemption to these limits as defined in the Annexes of Directive 2000/53/EC (ELV). Regarding the REACH Regulation, the information TE provides on SVHC in articles for this part number is based on the latest European Chemicals Agency (ECHA) 'Guidance on requirements for substances in articles' posted at this URL: <https://echa.europa.eu/guidance-documents/guidance-on-reach>

Compatible Parts



TE Part # 3-330854-0
MAXI.T.P. CLIP

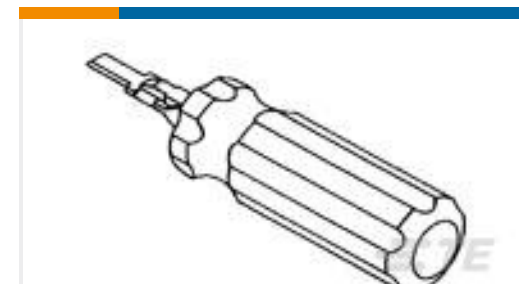
Customers Also Bought



TE Part #2-330854-5
MAXI T.P. CLIP



TE Part #654632-1
SERVICE TOOL MAXI TERMI POINT



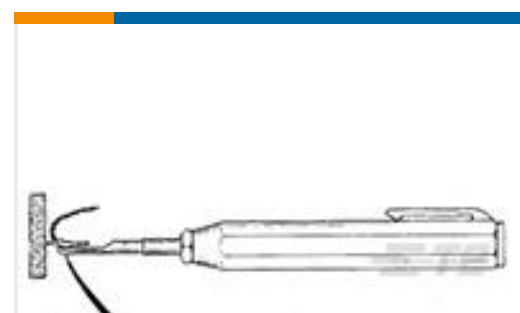
TE Part #69357-3
EXTRACT TOOL TERMI-POINT



TE Part #241469
INSULATION REMOVING SPRING



TE Part #654182-1
MAXI T.P. PISTOL



TE Part #69358-2
PULL TEST TOOL

Documents

[Datasheets & Catalog Pages](#)

[Bottoming Dies](#)

English



Instruction Sheets

TERMI-POINT Tool 69702

English