

12FC10 ✓ ACTIVE

Corcom | Corcom FC

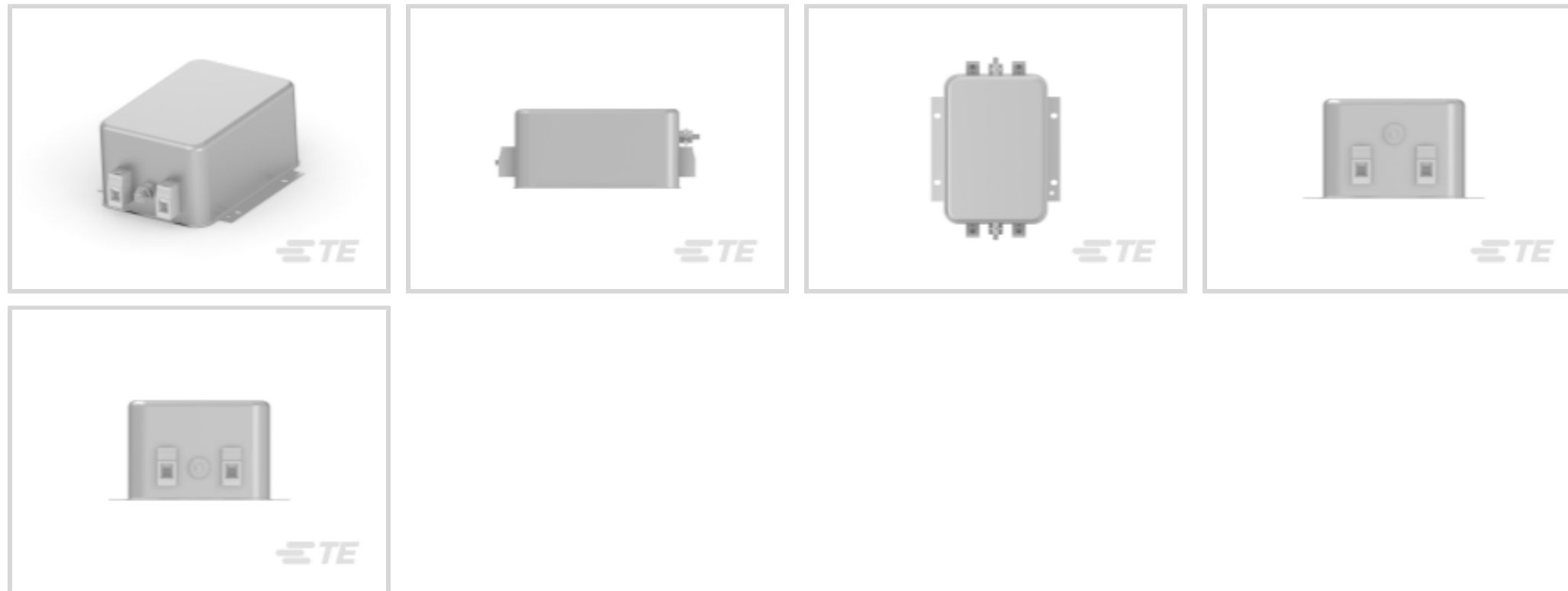
TE Internal #: 6609069-2

Single Phase Filters, 12 A, Flanged, Terminal Block Input, Terminal Block Output, Corcom FC

[View on TE.com >](#)



EMI & EMC Solutions > EMI Filters > Power Line Filters > Single Phase Filters > Single Phase Filters, Corcom FC Series



Filter Current Rating: **12 A**

Filter Mount Style: **Flanged**

Input Termination Type: **Terminal Block**

Output Termination Type: **Terminal Block**

Leakage Current (Max) (120VAC, 60Hz): **3.8 mA**

[All Single Phase Filters, Corcom FC Series \(11\)](#)

Features

Product Type Features

Ground Choke Option	No
Filter Type	Power Line
Filtering Requirements	Filtered
Input Termination Type	Terminal Block
Output Termination Type	Terminal Block

Electrical Characteristics

Voltage (Max)	250 VAC
Filter Current Rating	12 A
Leakage Current (Max) (120VAC, 60Hz)	3.8 mA
Leakage Current (Max) (250VAC, 50Hz)	6.7 mA

Mechanical Attachment

Filter Mount Style	Flanged
--------------------	---------

Usage Conditions



Operating Temperature Range	-10 – 40 °C
-----------------------------	-------------

Product Compliance

[For compliance documentation, visit the product page on TE.com>](#)

EU RoHS Directive 2011/65/EU	Compliant
EU ELV Directive 2000/53/EC	Compliant
China RoHS 2 Directive MIIT Order No 32, 2016	No Restricted Materials Above Threshold
EU REACH Regulation (EC) No. 1907/2006	Current ECHA Candidate List: JUNE 2023 (235) Candidate List Declared Against: JUNE 2023 (235) Does not contain REACH SVHC
Halogen Content	Not Low Halogen - contains Br or Cl > 900 ppm.
Solder Process Capability	Not applicable for solder process capability

Product Compliance Disclaimer

This information is provided based on reasonable inquiry of our suppliers and represents our current actual knowledge based on the information they provided. This information is subject to change. The part numbers that TE has identified as EU RoHS compliant have a maximum concentration of 0.1% by weight in homogenous materials for lead, hexavalent chromium, mercury, PBB, PBDE, DBP, BBP, DEHP, DIBP, and 0.01% for cadmium, or qualify for an exemption to these limits as defined in the Annexes of Directive 2011/65/EU (RoHS2). Finished electrical and electronic equipment products will be CE marked as required by Directive 2011/65/EU. Components may not be CE marked. Additionally, the part numbers that TE has identified as EU ELV compliant have a maximum concentration of 0.1% by weight in homogenous materials for lead, hexavalent chromium, and mercury, and 0.01% for cadmium, or qualify for an exemption to these limits as defined in the Annexes of Directive 2000/53/EC (ELV). Regarding the REACH Regulation, the information TE provides on SVHC in articles for this part number is based on the latest European Chemicals Agency (ECHA) 'Guidance on requirements for substances in articles' posted at this URL: <https://echa.europa.eu/guidance-documents/guidance-on-reach>

Compatible Parts



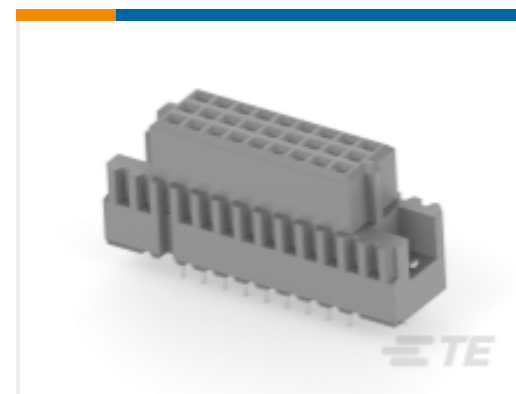
TE Part # CAT-C8114-F299B
Single Phase Filters, Corcom FC Series

Also in the Series | **Corcom FC**



Single Phase Filters(11)

Customers Also Bought

TE Part #5748641-1
KIT,RCPT,44P,HDP-22,SHLD ENCLSRETE Part #207464-7
HDP-20,PLUG,SIZE 3, 25 POSNTE Part #208131-1
Cable/Panel Mount Connector, CPC
Series 1TE Part #5-103080-5
07 MODII HDR SRST SHRD .100CLTE Part #098-10001
ML SENSOR .25 DIA EPOXY W/QDISTE Part #2-2307819-0
20P,2MM,BB,REC,DRVT,SMD,AU.76,
TR,W/CPTE Part #5-1571437-1
27P TR VERT RCPT ASSY,EUROCARDTE Part #5-1571436-2
16P DR VERT RCPT ASSY,EUROCARD

Documents

CAD Files

[3D PDF](#)

[3D](#)

[Customer View Model](#)

[ENG_CVM_CVM_6609069-2_C.2d_dxf.zip](#)

English

[Customer View Model](#)

[ENG_CVM_CVM_6609069-2_C.3d_igs.zip](#)

English

[Customer View Model](#)

[ENG_CVM_CVM_6609069-2_C.3d_stp.zip](#)

English

By downloading the CAD file I accept and agree to the [Terms and Conditions](#) of use.

Datasheets & Catalog Pages

[1654001_CORCOM_PRODUCT_GUIDE](#)

English



[1654001_CORCOM_PRODUCT_GUIDE_FC_SERIES](#)

English

[Corcom Combined Selector Charts](#)

English

[1-1654250-1_CORCOM_EMI_RFI_QRG](#)

English

[Product Environmental Compliance](#)

[Product Compliance](#)

English

[Product Compliance](#)

English

[Agency Approvals](#)

[UL Report](#)

English