

61.232.11 ✓ ACTIVE

TE Internal #: 61-0232-011-000

Standard Circular Connectors, Power & Signal, Brass, Size 15, 0°

Alignment Keyed, Metal, Pin

[View on TE.com >](#)



Connectors > Circular Connectors > Standard Circular Connectors



Sealable: **No**

Contact Current Rating (Max): **5 A**

Circuit Application: **Power & Signal**

Shell Base Material: **Brass**

Circular Connector Shell Size: **15**

Features

Product Type Features

Sealable	No
Shell Type	Metal

Body Features

Shell Base Material	Brass
---------------------	-------

Contact Features

Contact Current Rating (Max)	5 A
Circular Connector Contact Type	Pin

Termination Features

Termination Method to Wire & Cable	Crimp
------------------------------------	-------

Housing Features

Circular Connector Shell Size	15
Alignment Keyed	0°

Operation/Application

Durability Rating	500 Cycles
-------------------	------------

Circuit Application

Power & Signal

Product Compliance

For compliance documentation, visit the product page on TE.com>

EU RoHS Directive 2011/65/EU

Compliant with Exemptions

EU ELV Directive 2000/53/EC

Compliant with Exemptions

China RoHS 2 Directive MIIT Order No 32, 2016

Restricted Materials Above Threshold

EU REACH Regulation (EC) No. 1907/2006

Current ECHA Candidate List: JUNE 2023 (235)

Candidate List Declared Against: JUNE 2023 (235)

SVHC > Threshold:

Pb (1.5% in Component part)

Article Safe Usage Statements:

Do not eat, drink or smoke when using this product. Wash thoroughly after handling. Recycle if possible and dispose of the article by following all applicable governmental regulations relevant to your geographic location.

Halogen Content

Low Halogen - Br, Cl, F, I < 900 ppm per homogenous material. Also BFR/CFR/PVC Free

Solder Process Capability

Not applicable for solder process capability

Product Compliance Disclaimer

This information is provided based on reasonable inquiry of our suppliers and represents our current actual knowledge based on the information they provided. This information is subject to change. The part numbers that TE has identified as EU RoHS compliant have a maximum concentration of 0.1% by weight in homogenous materials for lead, hexavalent chromium, mercury, PBB, PBDE, DBP, BBP, DEHP, DIBP, and 0.01% for cadmium, or qualify for an exemption to these limits as defined in the Annexes of Directive 2011/65/EU (RoHS2). Finished electrical and electronic equipment products will be CE marked as required by Directive 2011/65/EU. Components may not be CE marked. Additionally, the part numbers that TE has identified as EU ELV compliant have a maximum concentration of 0.1% by weight in homogenous materials for lead, hexavalent chromium, and mercury, and 0.01% for cadmium, or qualify for an exemption to these limits as defined in the Annexes of Directive 2000/53/EC (ELV). Regarding the REACH Regulation, the information TE provides on SVHC in articles for this part number is based on the latest European Chemicals Agency (ECHA) 'Guidance on requirements for substances in articles' posted at this URL: <https://echa.europa.eu/guidance-documents/guidance-on-reach>

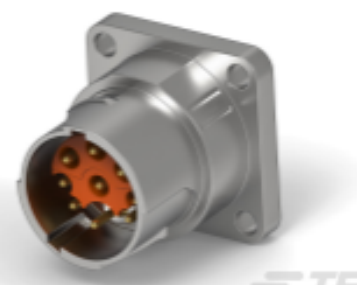
Compatible Parts



TE Part # EGA001M02000600000
615 ITEC RECEPTACLE, ANGLED



TE Part # EEA001M02000001000
615 ITEC RECEPTACLE



TE Part # EEA201M01000500000
915 ITEC RECEPTACLE



TE Part # EKA001M02310103000
615 EXTENSION



TE Part # ESB001N00310001000
615 PLUG

TE Part # C0-0201-000-000
CRIMPING TOOL MID-SIZE

TE Part # C0-0235-000-000
DIGITAL CRIMPING TOOL, SMALL



TE Part # C0-0258-000-000
POSITIONING INSERT FOR 1 MM CONTACTS



TE Part # EGA001N00000651000
615 itec receptacle angl rotatable 25x25



TE Part # EGC204N00000651000
615 itec receptacle angl rotatable 25x25



TE Part # ESA001N00310001000
615 PLUG



TE Part # ESA001N00320001000
615 PLUG

TE Part # ESA001N00340001000
615 PLUG

TE Part # ESB001N00320001000
615 PLUG



TE Part # ESB001N00330001000
615 PLUG



TE Part # ESA001N00330001000
615 PLUG

Customers Also Bought



TE Part #60-0265-011-000
CONTACT SOCKET 1 MM



TE Part #61-0239-011-000
CONTACT PIN 1 MM

TE Part #22-0447-031-000
923 RECEPTACLE, ANGLED, IG3B, ROTATABLE

TE Part #8A-0056-000-000
615-915 HAT STOPPER VA WITH L-SEALING

TE Part #BGC906M1100151A000
917 RECEPTACLE, ANGLED, ROTATABLE

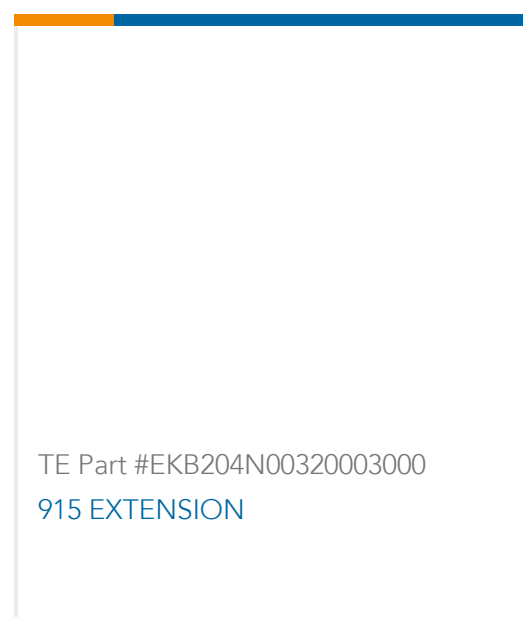
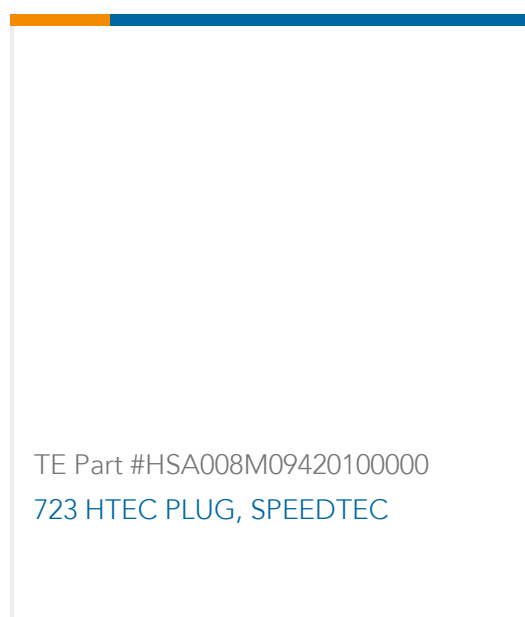
TE Part #C6-0178-000-000
lid tool



TE Part #EKA205N00330003000
915 EXTENSION



TE Part #ESB205N00320003000
915 PLUG



Documents

CAD Files

3D PDF

3D

Customer View Model

[ENG_CVM_CVM_61-0232-011-000_A.2d_dxf.zip](#)

English

Customer View Model

[ENG_CVM_CVM_61-0232-011-000_A.3d_igs.zip](#)

English

Customer View Model

[ENG_CVM_CVM_61-0232-011-000_A.3d_stp.zip](#)

English

By downloading the CAD file I accept and agree to the [Terms and Conditions](#) of use.

Datasheets & Catalog Pages

Pin 1mm 61.232.11

English

Product Environmental Compliance

TE Material Declaration

English