

6-1415035-1 ✓ ACTIVE

SCHRACK | SCHRACK Accessories PT/RT/XT

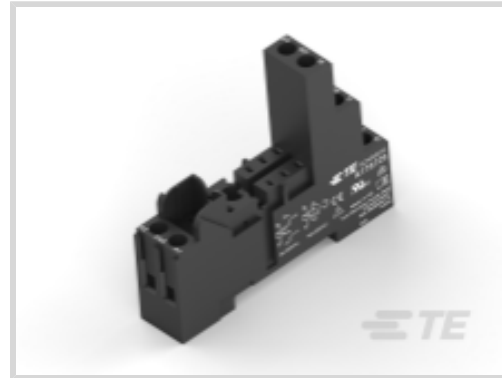
TE Internal #: 6-1415035-1

Relay Accessories, Sockets & Clips, Socket, DIN Rail Mount, Force Guided Relays SR2M Plug-in, DIN Rail, 2, Socket, SCHRACK Accessories PT/RT/XT

[View on TE.com >](#)



Relays, Contactors & Switches > Relays > Relay Accessories, Sockets & Clips



Relay Accessory, Socket & Clip Product Type: **Socket**

Relay Accessory, Socket & Clip Socket Type: **DIN Rail Mount**

Grounding Provision: **Without**

Relay Accessory, Socket & Clip For Use With: **Force Guided Relays SR2M Plug-in**

Relay Accessory, Socket & Clip Mounting Type: **DIN Rail**

## Features

### Product Type Features

|   |        |
|---|--------|
| Terminal Configuration                      | Screw  |
| Relay Accessory, Socket & Clip Product Type | Socket |
| Relay Accessory Type                        | Socket |

### Configuration Features

|                     |         |
|---------------------|---------|
| Grounding Provision | Without |
|---------------------|---------|

### Contact Features

|  |                |
|--|----------------|
|  | .6 in          |
| Relay Accessory, Socket & Clip Socket Type | DIN Rail Mount |
| Pole Configuration                         | 2              |

### Termination Features

|                |   |
|----------------|---|
| Number of Pins | 8 |
|----------------|---|

### Mechanical Attachment

|  |          |
|--|----------|
| Relay Accessory, Socket & Clip Mounting Type | DIN Rail |
|--|----------|

### Operation/Application

|   |                                  |
|---|----------------------------------|
| Relay Accessory, Socket & Clip For Use With | Force Guided Relays SR2M Plug-in |
|---|----------------------------------|

## Product Compliance



[For compliance documentation, visit the product page on TE.com>](#)

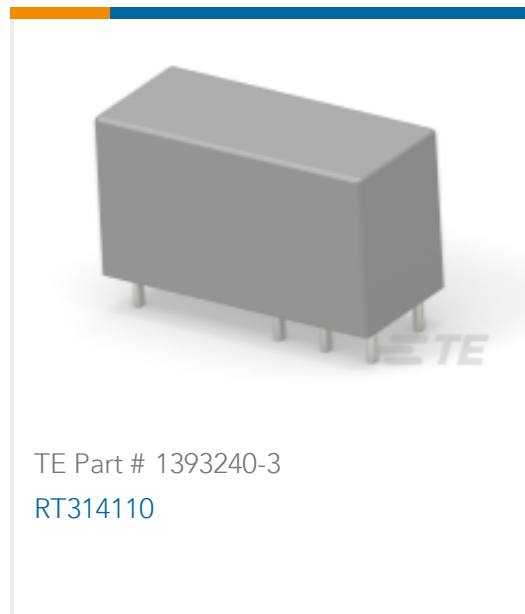
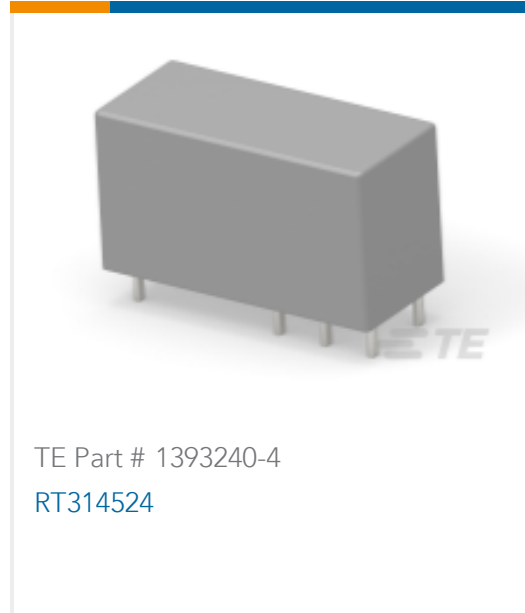
|   |  |
|---|--|
| EU RoHS Directive 2011/65/EU                  | Compliant  |
| EU ELV Directive 2000/53/EC                   | Compliant  |
| China RoHS 2 Directive MIIT Order No 32, 2016 | No Restricted Materials Above Threshold  |
| EU REACH Regulation (EC) No. 1907/2006        | Current ECHA Candidate List: JUNE 2023 (235)<br>Candidate List Declared Against: JAN 2023 (233)<br>Does not contain REACH SVHC |
| Halogen Content                               | Low Halogen - Br, Cl, F, I < 900 ppm per homogenous material. Also BFR/CFR/PVC Free  |
| Solder Process Capability                     | Not applicable for solder process capability   |

Product Compliance Disclaimer

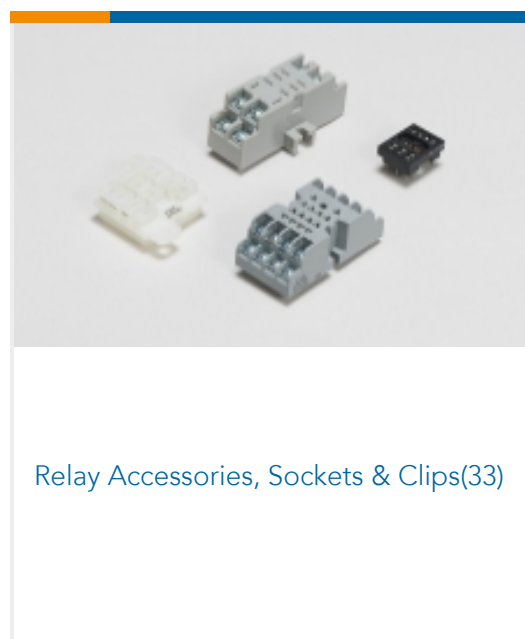
This information is provided based on reasonable inquiry of our suppliers and represents our current actual knowledge based on the information they provided. This information is subject to change. The part numbers that TE has identified as EU RoHS compliant have a maximum concentration of 0.1% by weight in homogenous materials for lead, hexavalent chromium, mercury, PBB, PBDE, DBP, BBP, DEHP, DIBP, and 0.01% for cadmium, or qualify for an exemption to these limits as defined in the Annexes of Directive 2011/65/EU (RoHS2). Finished electrical and electronic equipment products will be CE marked as required by Directive 2011/65/EU. Components may not be CE marked. Additionally, the part numbers that TE has identified as EU ELV compliant have a maximum concentration of 0.1% by weight in homogenous materials for lead, hexavalent chromium, and mercury, and 0.01% for cadmium, or qualify for an exemption to these limits as defined in the Annexes of Directive 2000/53/EC (ELV). Regarding the REACH Regulation, the information TE provides on SVHC in articles for this part number is based on the latest European Chemicals Agency (ECHA) 'Guidance on requirements for substances in articles' posted at this URL: <https://echa.europa.eu/guidance-documents/guidance-on-reach>

## Compatible Parts

|   |   |   |   |
|---|---|---|---|
|  <p>TE Part # CAT-SCH691-R997<br/>PCB Power Relay: 12-16 Amp, Monostable</p> |  <p>TE Part # 5-1415539-3<br/>PTML0060</p> |  <p>TE Part # 9-1393243-2<br/>RT425615</p> |  <p>TE Part # 7-1415036-1<br/>PTML0730</p> |
|  <p>TE Part # 1-1419108-1<br/>RT315730</p>                                   |  <p>TE Part # 7-1393243-8<br/>RT424615</p> |  <p>TE Part # 9-1393243-3<br/>RT425730</p> |  <p>TE Part # 1-1393240-4<br/>RT315024</p> |

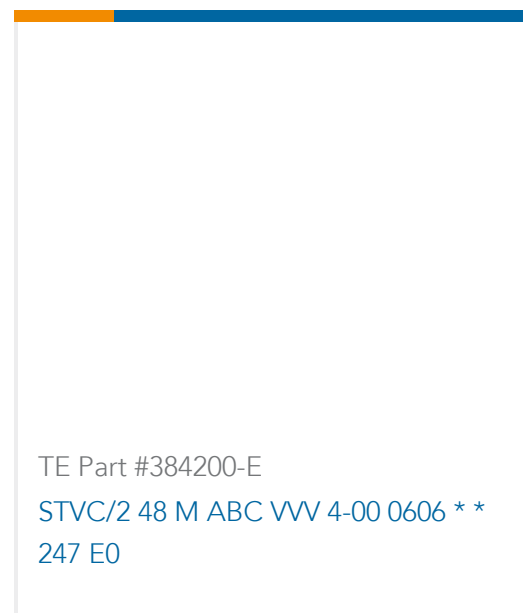
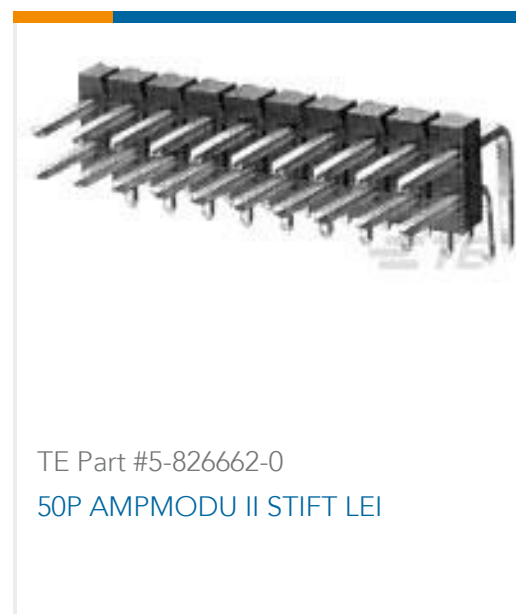


Also in the Series | **SCHRACK Accessories PT/RT/XT**



Customers Also Bought





## Documents

### CAD Files

#### Customer View Model

[ENG\\_CVM\\_CVM\\_6-1415035-1\\_A.2d\\_dxf.zip](#)

English

#### 3D PDF

3D

#### Customer View Model

[ENG\\_CVM\\_CVM\\_6-1415035-1\\_A.3d\\_igs.zip](#)

English

#### Customer View Model

[ENG\\_CVM\\_CVM\\_6-1415035-1\\_A.3d\\_stp.zip](#)

English

By downloading the CAD file I accept and agree to the [Terms and Conditions](#) of use.

### Datasheets & Catalog Pages

#### Relay Package Package RT

English

#### Accessories - Power PCB Relay RT

English

#### Accessories - Power Relay XT

English

#### Accessories Force Guided Relay SR2M Plug-in

English

### Product Specifications

#### Definitions General Purpose Relays

English



---

**Agency Approvals**

UKCA\_CERT\_708\_00013\_C1

English