

58433-4 ✓ ACTIVE

Macro Sensors PR, UTILUX CR

TE Internal #: 58433-4

TE Internal Description: PRO CR ASSY 140 OPTMT IS9671

[View on TE.com >](#)



## Product Compliance

[For compliance documentation, visit the product page on TE.com>](#)

EU RoHS Directive 2011/65/EU	Out of Scope
EU ELV Directive 2000/53/EC	Out of Scope
China RoHS 2 Directive MIIT Order No 32, 2016	Not reviewed for China RoHS compliance
EU REACH Regulation (EC) No. 1907/2006	Current ECHA Candidate List: JAN 2023 (233) Candidate List Declared Against: JUL 2021 (219) Does not contain REACH SVHC
Halogen Content	Low Halogen - Br, Cl, F, I < 900 ppm per homogenous material. Also BFR/CFR/PVC Free
Solder Process Capability	Not applicable for solder process capability

### Product Compliance Disclaimer

This information is provided based on reasonable inquiry of our suppliers and represents our current actual knowledge based on the information they provided. This information is subject to change. The part numbers that TE has identified as EU RoHS compliant have a maximum concentration of 0.1% by weight in homogenous materials for lead, hexavalent chromium, mercury, PBB, PBDE, DBP, BBP, DEHP, DIBP, and 0.01% for cadmium, or qualify for an exemption to these limits as defined in the Annexes of Directive 2011/65/EU (RoHS2). Finished electrical and electronic equipment products will be CE marked as required by Directive 2011/65/EU. Components may not be CE marked. Additionally, the part numbers that TE has identified as EU ELV compliant have a maximum concentration of 0.1% by weight in homogenous materials for lead, hexavalent chromium, and mercury, and 0.01% for cadmium, or qualify for an exemption to these limits as defined in the Annexes of Directive 2000/53/EC (ELV). Regarding the REACH Regulation, the information TE provides on SVHC in articles for this part number is based on the latest European Chemicals Agency (ECHA) 'Guidance on requirements for substances in articles' posted at this URL: <https://echa.europa.eu/guidance-documents/guidance-on-reach>

Also in the Series | [Macro Sensors PR](#)



Curing Blocks, Ovens & Sleeves(1)



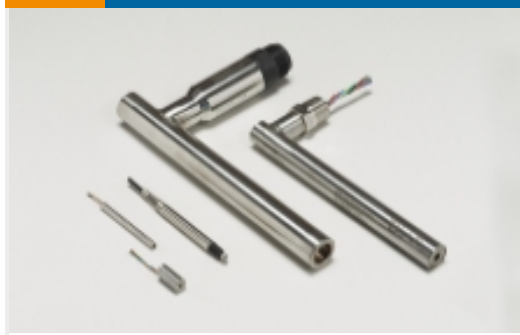
Expanded Beam Fiber Housings(5)



Expanded Beam Fiber Optics(21)



Leadframes(6)



LVDT/LVIT Sensors(14)

## Also in the Series | UTILUX CR



Board-to-Board Connector Contacts(4)



Card Edge Connector Housings(1)



Compression Connectors(7)

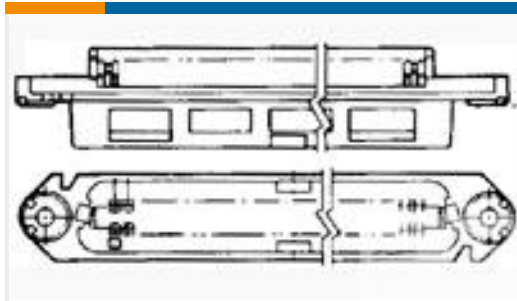


Insertion & Extraction Tools(1)



Wire-to-Board Connector Contacts(2)

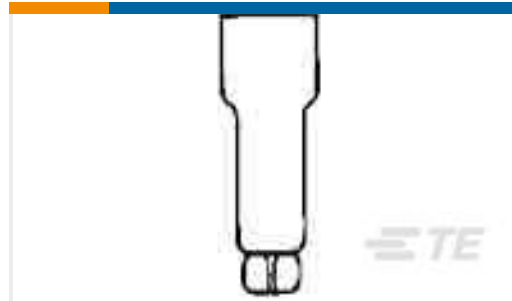
## Customers Also Bought



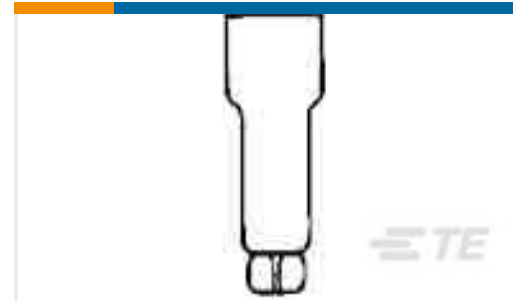
TE Part #229975-1  
ASSY,RCPT,50POS,B SLOT,BLK HSG



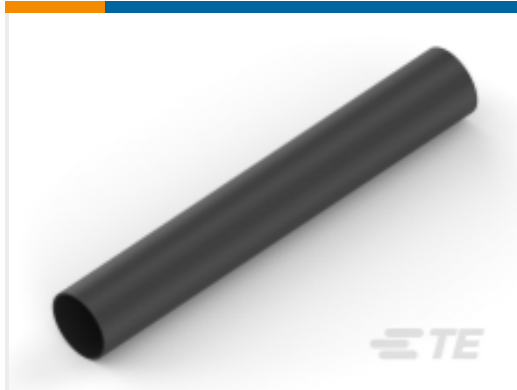
TE Part #2-917807-2  
Receptacle and Tab Housing: 5.08 or 10.16 mm pitch, 250-600V



TE Part #321519  
SPLICE,CE 22-10



TE Part #2-328375-3  
SPLICE,CE 22-14



TE Part #NB09312001  
ATUM-12/4-0-STK



TE Part #NB17592001  
RT-375-3/4-X-STK



TE Part #6828129-1  
CO KIT, LC, MM, DUP TIGHT



TE Part #HA06E-C-100PC  
ASSY. HA06E CONN. PLUG



TE Part #2123265-2  
KIT, TIGHT JACKET, LC, G2, SM

## Documents

### Datasheets & Catalog Pages

[1-1773865-2\\_1015\\_Commercial Manual Hand Tools](#)

English

### Instruction Sheets

[Instruction Sheet \(U.S.\)](#)

English