

530853-3 ✓ ACTIVE

DUO-TYNE

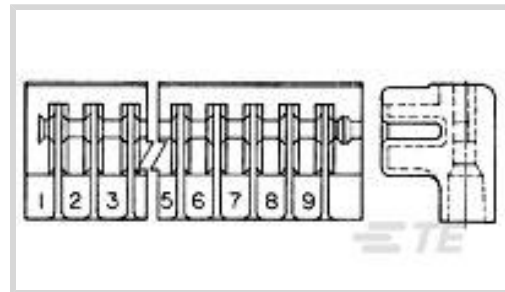
TE Internal #: 530853-3

Card Edge Connector Housings, Board-to-Board, 6 Position, 3.96 mm [.156 in] Centerline, 6 Dual Positions, Printed Circuit Board, Power

[View on TE.com >](#)



Connectors > PCB Connectors > Card Edge Connectors > Card Edge Connector Housings



Connector System: **Board-to-Board**

Number of Positions: **6**

Centerline (Pitch): **3.96 mm [.156 in]**

Row-to-Row Spacing: **[.156 in]**

Number of Dual Positions: **6**

Features

Product Type Features

Connector System	Board-to-Board
Connector & Contact Terminates To	Printed Circuit Board

Configuration Features

Number of Positions	6
Number of Dual Positions	6

Body Features

Primary Product Color	Natural
-----------------------	---------

Contact Features

Contact Current Rating (Max)	30 A
------------------------------	------

Mechanical Attachment

Connector Mounting Type	Board Mount
-------------------------	-------------

Housing Features

Housing Material	Nylon GF
Centerline (Pitch)	3.96 mm [.156 in]

Dimensions

Compatible Insulation Diameter Range	2.29 – 3.3 mm [.09 – .13 in]
	.156 in



Usage Conditions

Operating Temperature Range	-55 – 105 °C[-67 – 221 °F]
-----------------------------	----------------------------

Operation/Application

Circuit Application	Power
---------------------	-------

Packaging Features

Packaging Quantity	1
Packaging Method	Package

Product Compliance

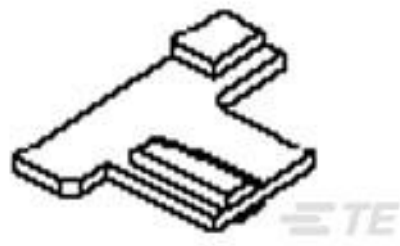
[For compliance documentation, visit the product page on TE.com>](#)

EU RoHS Directive 2011/65/EU	Compliant
EU ELV Directive 2000/53/EC	Compliant
China RoHS 2 Directive MIIT Order No 32, 2016	No Restricted Materials Above Threshold
EU REACH Regulation (EC) No. 1907/2006	Current ECHA Candidate List: JUNE 2023 (235) Candidate List Declared Against: JUNE 2023 (235) Does not contain REACH SVHC
Halogen Content	Low Halogen - Br, Cl, F, I < 900 ppm per homogenous material. Also BFR/CFR/PVC Free
Solder Process Capability	Not applicable for solder process capability

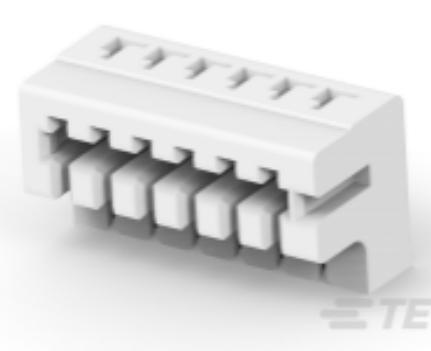
Product Compliance Disclaimer

This information is provided based on reasonable inquiry of our suppliers and represents our current actual knowledge based on the information they provided. This information is subject to change. The part numbers that TE has identified as EU RoHS compliant have a maximum concentration of 0.1% by weight in homogenous materials for lead, hexavalent chromium, mercury, PBB, PBDE, DBP, BBP, DEHP, DIBP, and 0.01% for cadmium, or qualify for an exemption to these limits as defined in the Annexes of Directive 2011/65/EU (RoHS2). Finished electrical and electronic equipment products will be CE marked as required by Directive 2011/65/EU. Components may not be CE marked. Additionally, the part numbers that TE has identified as EU ELV compliant have a maximum concentration of 0.1% by weight in homogenous materials for lead, hexavalent chromium, and mercury, and 0.01% for cadmium, or qualify for an exemption to these limits as defined in the Annexes of Directive 2000/53/EC (ELV). Regarding the REACH Regulation, the information TE provides on SVHC in articles for this part number is based on the latest European Chemicals Agency (ECHA) 'Guidance on requirements for substances in articles' posted at this URL: <https://echa.europa.eu/guidance-documents/guidance-on-reach>

Compatible Parts



TE Part # 583661-1
DUO TYNE FLAG KEYING PLUG

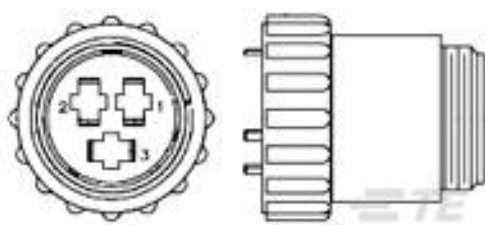


TE Part # 1-530853-3
06 DUO TYNE FLAG HSG



TE Part # 66088-2
CONT DUO-TYNE FLAG 22-18 AWG

Customers Also Bought



TE Part #206037-2
CPC PLUG ASSEMBLY SIZE 17-3



TE Part #207485-1
CPC PLUG ASSEMBLY SIZE 23-16



TE Part #66601-1
III+ SKT,18-14,TIN-LEAD,LP



TE Part #DT04-2P-RT01
REC, 2P, BLK, 600V, 1.28V, 4A DIODE,
NI



TE Part #DT04-3P-C015
REC, 3P, GRY, E

Documents

Product Drawings

DUO-TYNE FLAG HSG 6 POS

English

CAD Files

3D PDF

3D

Customer View Model

[ENG_CVM_CVM_530853-3_T.2d_dxf.zip](#)

English

Customer View Model

[ENG_CVM_CVM_530853-3_T.3d_igs.zip](#)

English

Customer View Model

[ENG_CVM_CVM_530853-3_T.3d_stp.zip](#)

English

By downloading the CAD file I accept and agree to the [Terms and Conditions](#) of use.



[Agency Approvals](#)

[Agency Approval Document](#)

English