

4-1719434-1 ✓ ACTIVE

TE Internal #: 4-1719434-1

Housing for Female Terminals, Wire-to-Wire, 4 Position, .276 in [7 mm] Centerline, Sealable, Blue, Cable Mount (Free-Hanging)

[View on TE.com >](#)



Connectors > Automotive Connectors > Automotive Housings > Circular DIN Housings



Connector System: **Wire-to-Wire**

Number of Positions: **4**

Connector & Housing Type: **Housing for Female Terminals**

Centerline (Pitch): **7 mm [.276 in]**

Sealable: **Yes**

[All Circular DIN Housings \(51\)](#)

Features

Product Type Features

| | |
|--------------------------|------------------------------|
| Mixed & Hybrid Connector | No |
| Connector Shape | Circular |
| Connector System | Wire-to-Wire |
| Connector & Housing Type | Housing for Female Terminals |
| Sealable | Yes |
| Primary Locking Feature | On the Terminal |

Configuration Features

| | |
|---------------------|---|
| Number of Positions | 4 |
|---------------------|---|

Electrical Characteristics

| | |
|------------------------------|------------------------|
| Operating Voltage | 48 VDC |
| Nominal Voltage Architecture | 12 V, 24 V, 42 V, 48 V |

Body Features

| | |
|------------------|------|
| Cable Exit Angle | 180° |
|------------------|------|



| | |
|-----------------------|------|
| Primary Product Color | Blue |
|-----------------------|------|

| | |
|-------------------------|---|
| Connector & Keying Code | 4 |
|-------------------------|---|

Contact Features

| | |
|--------------|-------|
| Contact Size | 2.5mm |
|--------------|-------|

| | |
|--------------|--------|
| Contact Type | Socket |
|--------------|--------|

| | |
|---------------------|-----------------|
| Mating Pin Diameter | 2.5 mm[.098 in] |
|---------------------|-----------------|

Mechanical Attachment

| | |
|-----------------------------|----|
| Terminal Position Assurance | No |
|-----------------------------|----|

| | |
|---------------|---------|
| Strain Relief | Without |
|---------------|---------|

| | |
|-----------------------|-------|
| Mating Alignment Type | Keyed |
|-----------------------|-------|

| | |
|------------------|------|
| Mating Alignment | With |
|------------------|------|

| | |
|-------------------------|----------------------------|
| Connector Mounting Type | Cable Mount (Free-Hanging) |
|-------------------------|----------------------------|

Housing Features

| | |
|------------------|--------|
| Housing Material | PBT GF |
|------------------|--------|

| | |
|--------------------|---------------|
| Centerline (Pitch) | 7 mm[.276 in] |
|--------------------|---------------|

Dimensions

| | |
|------------------|-------------------|
| Connector Height | 32.8 mm[1.291 in] |
|------------------|-------------------|

| | |
|---------------|----------------|
| Product Width | 31 mm[1.22 in] |
|---------------|----------------|

| | |
|----------------|------------------|
| Product Length | 32.8 mm[1.29 in] |
|----------------|------------------|

Usage Conditions

| | |
|-----------------------------|---|
| Operating Temperature (Max) | 70 °C, 75 °C, 80 °C, 85 °C, 90 °C, 100 °C, 105 °C, 110 °C, 120 °C[158 °F][167 °F][176 °F][185 °F][194 °F][212 °F][221 °F][230 °F][248 °F] |
|-----------------------------|---|

| | |
|-----------------------------|----------------------------|
| Operating Temperature Range | -40 – 120 °C[-40 – 248 °F] |
|-----------------------------|----------------------------|

Industry Standards

| | |
|----------------------|-------------|
| Degree of Protection | IP67, IP69K |
|----------------------|-------------|

| | |
|------------------------|---------|
| UL Flammability Rating | UL 94HB |
|------------------------|---------|

Packaging Features

| | |
|--------------------|-----|
| Packaging Quantity | 700 |
|--------------------|-----|

| | |
|------------------|--------------|
| Packaging Method | Box & Carton |
|------------------|--------------|

Other

| | |
|-------------|-----|
| Serviceable | Yes |
|-------------|-----|



Connector Position Assurance Capable

No

Product Compliance

[For compliance documentation, visit the product page on TE.com>](#)

| | |
|---|---|
| EU RoHS Directive 2011/65/EU | Compliant |
| EU ELV Directive 2000/53/EC | Compliant |
| China RoHS 2 Directive MIIT Order No 32, 2016 | No Restricted Materials Above Threshold |
| EU REACH Regulation (EC) No. 1907/2006 | Current ECHA Candidate List: JUNE 2023 (235) Candidate List Declared Against: JUNE 2023 (235) Does not contain REACH SVHC |
| Halogen Content | Low Halogen - Br, Cl, F, I < 900 ppm per homogenous material. Also BFR/CFR/PVC Free |
| Solder Process Capability | Not applicable for solder process capability |

Product Compliance Disclaimer

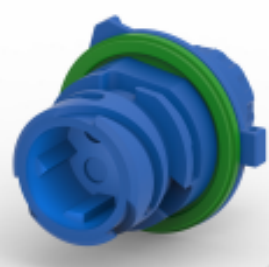
This information is provided based on reasonable inquiry of our suppliers and represents our current actual knowledge based on the information they provided. This information is subject to change. The part numbers that TE has identified as EU RoHS compliant have a maximum concentration of 0.1% by weight in homogenous materials for lead, hexavalent chromium, mercury, PBB, PBDE, DBP, BBP, DEHP, DIBP, and 0.01% for cadmium, or qualify for an exemption to these limits as defined in the Annexes of Directive 2011/65/EU (RoHS2). Finished electrical and electronic equipment products will be CE marked as required by Directive 2011/65/EU. Components may not be CE marked. Additionally, the part numbers that TE has identified as EU ELV compliant have a maximum concentration of 0.1% by weight in homogenous materials for lead, hexavalent chromium, and mercury, and 0.01% for cadmium, or qualify for an exemption to these limits as defined in the Annexes of Directive 2000/53/EC (ELV). Regarding the REACH Regulation, the information TE provides on SVHC in articles for this part number is based on the latest European Chemicals Agency (ECHA) 'Guidance on requirements for substances in articles' posted at this URL: <https://echa.europa.eu/guidance-documents/guidance-on-reach>

Compatible Parts

| | | | |
|---|--|---|--|
|  <p>TE Part # CAT-C4962-B128 Circular DIN Backshells</p> |  <p>TE Part # 185636-1 PROTECT CAP 2.5MM PLUG</p> |  <p>TE Part # 185792-1 180 DEG CAP FOR CORRUGTD TUBE</p> |  <p>TE Part # 828920-1 EINZELADERDICHTUNG</p> |
|---|--|---|--|



TE Part # 828922-1
2,5MM CAVITY PLUG FOR 5,4MM DI



TE Part # 4-967402-1
2.5MM PIN HOUSING, 2-4POS., ASSY



TE Part # CAT-R7602-T273
ROUND CONNECTOR SYSTEM, PIN AND SOCKET

Customers Also Bought



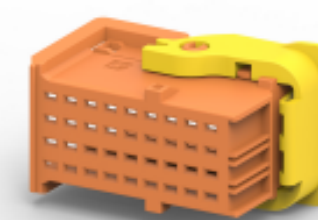
TE Part #2-967624-1
Timer Connector Housing



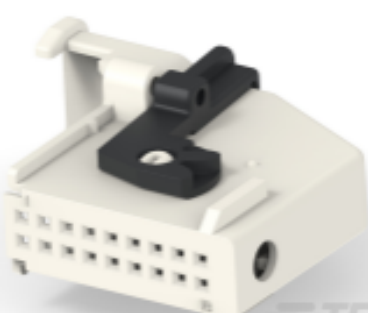
TE Part #1-1703841-1
Heavy Duty Sealed Connector Series Housings



TE Part #4-2112162-1
21POS, TAB2.8X0.8, TABHSG, CODE D, ASSY, SLD



TE Part #1-1718485-6
CARRIER FOR RECEPT. INSERTS 36 POS



TE Part #2-966096-1
MQS ABDECKKAPPE 18P

Documents

Product Drawings

4POS DIA 2.5 SOCKET CONNECTOR HSG

English

CAD Files

3D PDF

3D

Customer View Model

[ENG_CVM_CVM_4-1719434-1_B_c-4-1719434-1-b.2d_dxf.zip](#)

English

Customer View Model

[ENG_CVM_CVM_4-1719434-1_B_c-4-1719434-1-b.3d_igs.zip](#)

English

Customer View Model

[ENG_CVM_CVM_4-1719434-1_B_c-4-1719434-1-b.3d_stp.zip](#)

English

By downloading the CAD file I accept and agree to the [Terms and Conditions](#) of use.

4-1719434-1

Housing for Female Terminals, Wire-to-Wire, 4 Position, .276 in [7 mm] Centerline,
Sealable, Blue, Cable Mount (Free-Hanging)



Product Specifications

Product Specification

English