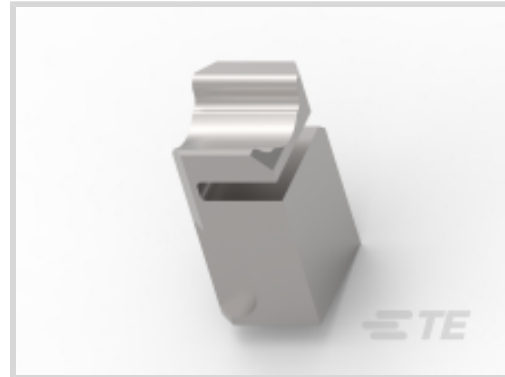




Application Tooling > Spare & Wear Tooling



Applicator & Product Style: **Heavy Duty Mini (HDM)**

### Features

#### Other

Applicator & Product Style	Heavy Duty Mini (HDM)
----------------------------	-----------------------

### Product Compliance

[For compliance documentation, visit the product page on TE.com>](#)

EU RoHS Directive 2011/65/EU	Compliant
EU ELV Directive 2000/53/EC	Compliant
China RoHS 2 Directive MIIT Order No 32, 2016	No Restricted Materials Above Threshold
EU REACH Regulation (EC) No. 1907/2006	Current ECHA Candidate List: JUNE 2023 (235) Candidate List Declared Against: JUNE 2023 (235) Does not contain REACH SVHC
Halogen Content	Low Halogen - Br, Cl, F, I < 900 ppm per homogenous material. Also BFR/CFR/PVC Free
Solder Process Capability	Not applicable for solder process capability

#### Product Compliance Disclaimer

This information is provided based on reasonable inquiry of our suppliers and represents our current actual knowledge based on the information they provided. This information is subject to change. The part numbers that TE has identified as EU RoHS compliant have a maximum concentration of 0.1% by weight in homogenous materials for lead, hexavalent chromium, mercury, PBB, PBDE, DBP, BBP, DEHP, DIBP, and 0.01% for cadmium, or qualify for an exemption to these limits as defined in the Annexes of Directive 2011/65/EU (RoHS2). Finished electrical and electronic equipment products will be CE marked as required by Directive 2011/65/EU. Components may not be CE marked. Additionally, the part numbers that TE has identified as EU ELV compliant have a maximum concentration of 0.1% by weight in homogenous materials for lead, hexavalent chromium, and mercury, and 0.01% for cadmium, or qualify for an exemption to these limits as defined in the Annexes of Directive 2000/53/EC (ELV). Regarding the REACH Regulation, the information TE provides on SVHC in articles for this part number is based on the latest European Chemicals Agency (ECHA) 'Guidance on requirements for substances in articles' posted at this URL: <https://echa.europa.eu/guidance-documents/guidance-on-reach>

## Compatible Parts



TE Part # 2836774-1  
OCEAN\_2.0\_APPLICATIONER-S-096F161O



TE Part # 2836776-1  
OCEAN-2.0-APPLICATIONER-S-071F160O



**KIT**  
REPRESENTATION ONLY

TE Part # 7-2836776-7  
OCEAN\_2.0\_SPARE\_PART\_KIT-071F160O



TE Part # 2151480-1  
OCEAN\_2.0\_APPLICATIONER-S-070F130SP



TE Part # 2266562-1  
OCEAN-2.0-APPLICATIONER-S-098F100O



TE Part # 2151469-1  
OCEAN\_2.0\_APPLICATIONER-S-055F125O



TE Part # 2151539-1  
OCEAN-2.0-APPLICATIONER-S-070F068SP



TE Part # 2151204-1  
OCEAN-2.0-APPLICATIONER-S-090F145O



TE Part # 2151205-1  
OCEAN-2.0-APPLICATIONER-S-090F145O



TE Part # 2151346-1  
OCEAN\_2.0\_APPLICATIONER-S-100F165O



TE Part # 2151104-1  
OCEAN\_2.0\_APPLICATIONER-S-055F114O



TE Part # 1385636-2  
HDM SAPR136F2000 K



TE Part # 1385636-3  
HDM SAPR136F2000 G



TE Part # 1855330-1  
HDM w/FA SMPO148F2000 LM (CUT)



TE Part # 1855430-1  
HDM w/FA SMPO062F146O LM (CUT)



TE Part # 2-2151167-1  
OCEAN\_2.0\_APPLICATIONER-S-062F130O



TE Part # 2-2151167-2  
OCEAN\_2.0\_APPLICATIONER-S-062F130O



TE Part # 2-2151208-1  
OCEAN\_2.0\_Applicationer-S-080F160O

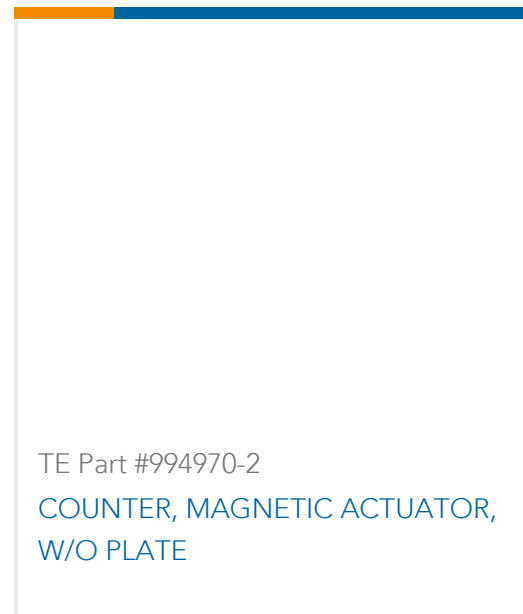
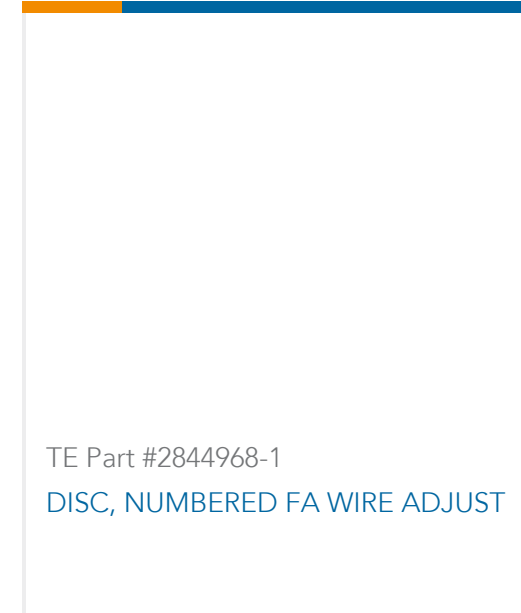


TE Part # 2-2151208-2  
OCEAN\_2.0\_Applicationer-S-080F160OA



TE Part # 2-2151249-1  
OCEAN\_2.0\_APPLICATIONER-S-062F134O

## Customers Also Bought



## Documents

### Datasheets & Catalog Pages

[CRIMPING WHERE FORM MEETS FUNCTION](#)

English

### Instruction Sheets

[Instruction Sheet \(U.S.\)](#)

English