



CGS | CGS HS

TE Internal #: 3-1625985-4

25 Ω , Wire Wound, Power Resistor, 72.5 x 30 x 17 mm, 2 Termination, Loose Piece - Tray, 5 %, 50 W, ± 50 ppm/ $^{\circ}\text{C}$, Solder Lug Termination, CGS HS

[View on TE.com >](#)

Passive Components > Resistors > Chassis Mount Resistors > Power Resistors: Aluminum Housed, NHS



Resistor Type: **Power Resistor**

Passive Component Dimensions: **72.5 x 30 x 17 mm**

Number of Terminations: **2**

Packaging Method: **Loose Piece - Tray**

Passive Component Tolerance: **5 %**

[All Power Resistors: Aluminum Housed, NHS \(4\)](#)

Features

Product Type Features

Resistor Type	Power Resistor
Element Type	Wire Wound

Configuration Features

Number of Resistors	1
---------------------	---

Electrical Characteristics

Voltage Rating	1250 VDC
Passive Component Tolerance	5 %
Resistance Class	Up to 1k Ω
Resistance Value	25 Ω
Power Rating	50 W

Termination Features

Number of Terminations	2
Chassis Mount Resistor Termination Type	Solder Lug

Mechanical Attachment

Chassis Mount Resistor Mount Style	Chassis Mount
------------------------------------	---------------

Dimensions



Passive Component Dimensions	72.5 x 30 x 17 mm
------------------------------	-------------------

Usage Conditions

Temperature Coefficient	±50 ppm/°C
-------------------------	------------

Packaging Features

Packaging Method	Loose Piece - Tray
------------------	--------------------

Product Compliance

[For compliance documentation, visit the product page on TE.com>](#)

EU RoHS Directive 2011/65/EU	Compliant
EU ELV Directive 2000/53/EC	Compliant
China RoHS 2 Directive MIIT Order No 32, 2016	No Restricted Materials Above Threshold
EU REACH Regulation (EC) No. 1907/2006	Current ECHA Candidate List: JUNE 2023 (235) Candidate List Declared Against: JAN 2021 (211) Does not contain REACH SVHC
Halogen Content	Not Yet Reviewed for halogen content
Solder Process Capability	Not applicable for solder process capability

Product Compliance Disclaimer

This information is provided based on reasonable inquiry of our suppliers and represents our current actual knowledge based on the information they provided. This information is subject to change. The part numbers that TE has identified as EU RoHS compliant have a maximum concentration of 0.1% by weight in homogenous materials for lead, hexavalent chromium, mercury, PBB, PBDE, DBP, BBP, DEHP, DIBP, and 0.01% for cadmium, or qualify for an exemption to these limits as defined in the Annexes of Directive 2011/65/EU (RoHS2). Finished electrical and electronic equipment products will be CE marked as required by Directive 2011/65/EU. Components may not be CE marked. Additionally, the part numbers that TE has identified as EU ELV compliant have a maximum concentration of 0.1% by weight in homogenous materials for lead, hexavalent chromium, and mercury, and 0.01% for cadmium, or qualify for an exemption to these limits as defined in the Annexes of Directive 2000/53/EC (ELV). Regarding the REACH Regulation, the information TE provides on SVHC in articles for this part number is based on the latest European Chemicals Agency (ECHA) 'Guidance on requirements for substances in articles' posted at this URL: <https://echa.europa.eu/guidance-documents/guidance-on-reach>

Compatible Parts



Also in the Series | CGS HS



Automotive Housings(30)



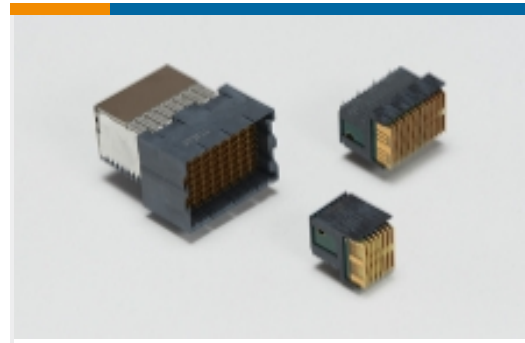
Card Edge Connector Housings(2)



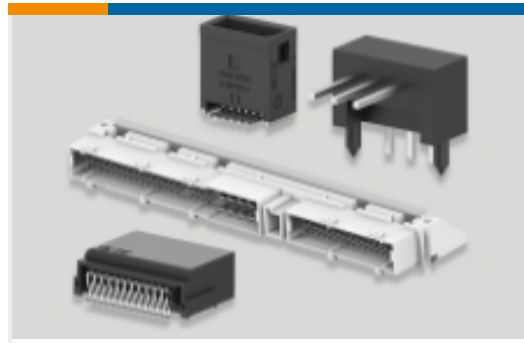
Chassis Mount Resistors(603)



FFC Connectors(1)



High Speed Backplane Connectors(11)



PCB Headers & Receptacles(2)



Plug & Socket Lighting Connector Accessories(1)



RJ45 Connectors(1)

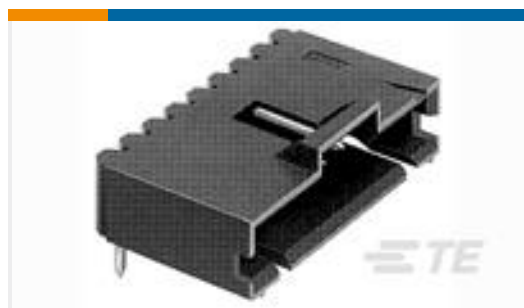


Wire-to-Board Connector Assemblies & Housings(2)

Customers Also Bought



TE Part #6-1625971-2
HSA25 68R 5%



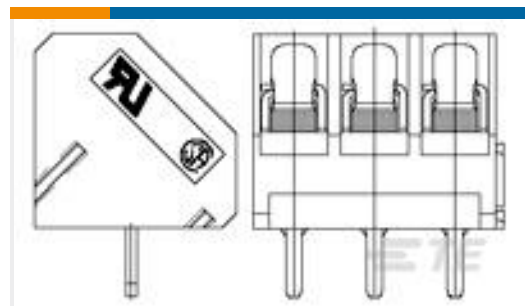
TE Part #5-103635-6
07 MTE HDR SRRA LTCH.100CL LF



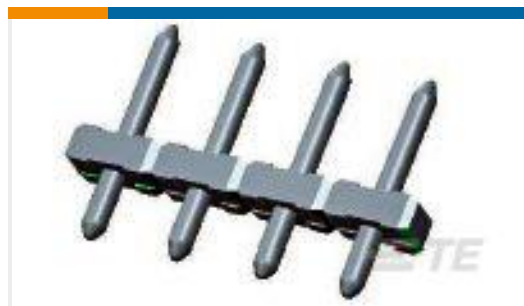
TE Part #825433-2
MOD 2 PINHDR 1X2 P.



TE Part #2042274-2
ELCON MINI 2P VERT HEADER,W/O CODING



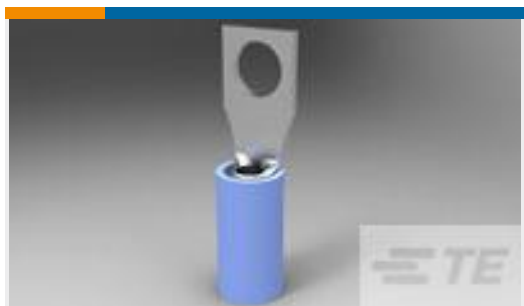
TE Part #1776252-2
45 degree wire inlet, 5.0mm, H



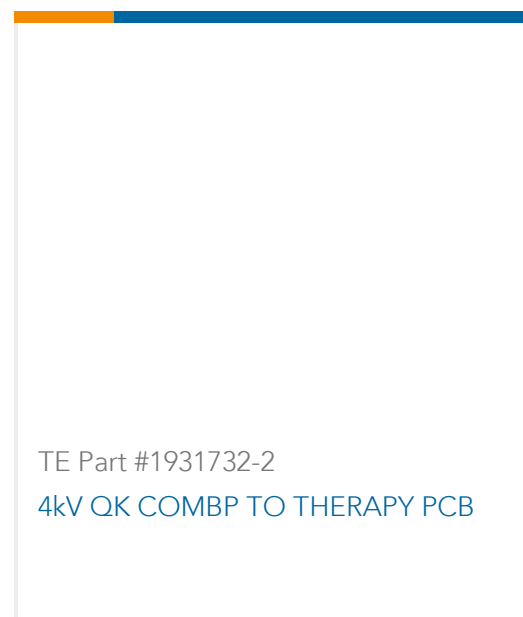
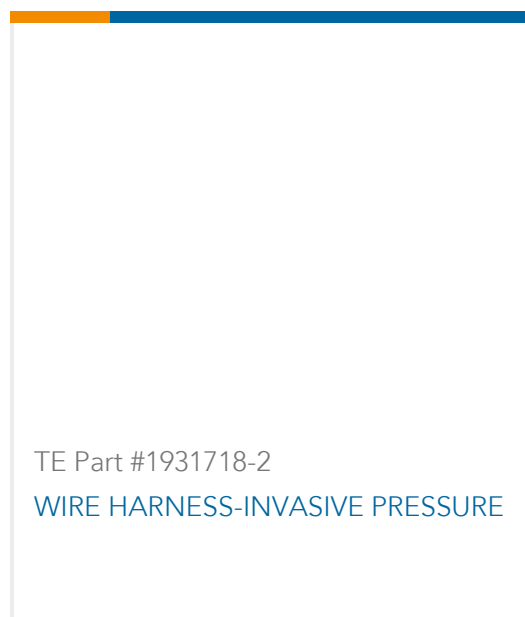
TE Part #282832-2
TERMI-BLOK PIN HEAD 180 2P. 5



TE Part #927829-2
SPT REC 6.3 Contact SRC Sn



TE Part #2-327946-4
TERMINAL,PIDG RECT 16-14 8



Documents

Product Drawings

[NHSA50 25R 5%](#)

English

CAD Files

Customer View Model

[ENG_CVM_CVM_3-1625985-4_L.2d_dxf.zip](#)

English

[3D PDF](#)

3D

Customer View Model

[ENG_CVM_CVM_3-1625985-4_L.3d_igs.zip](#)

English

Customer View Model

[ENG_CVM_CVM_3-1625985-4_L.3d_stp.zip](#)

English

By downloading the CAD file I accept and agree to the [Terms and Conditions](#) of use.

Datasheets & Catalog Pages

[1309350_PASSIVE_COMPONENT](#)

English

[8-1773459-4_POWER_FILTERING_AND_RESISTIVE_SOLUTIONS_FOR_ELEVATORS_AND_ESCALATORS](#)

English