



**Sliver for SFF-TA-1002**

TE Internal #: 2821385-2

Sliver Cable Assembly, 74 Position, 1 m, 12 Gb/s, Ribbon Cable, 33 AWG, Sliver Plug, Sliver Plug, High Speed, 48 Signal Positions, VW-1

[View on TE.com >](#)

Cable Assemblies > Copper Cable Assemblies > Internal I/O Cable Assemblies



Cable Assembly Type: **Sliver**

Connector Type (End A): **Sliver Plug**

Connector Type (End B): **Sliver Plug**

Cable Style: **Ribbon Cable**

Cable Assembly Category: **High Speed**

**Features**

**Product Type Features**

Cable Assembly Type	Sliver
Connector Type (End A)	Sliver Plug
Connector Type (End B)	Sliver Plug
Cable Style	Ribbon Cable
Cable Assembly Category	High Speed

**Configuration Features**

Number of Positions	74
Number of Signal Positions	48

**Signal Characteristics**

Data Rate	12 Gb/s
-----------	---------

**Body Features**

Cable Flammability Rating	VW-1
---------------------------	------

**Dimensions**

Wire Size	33 AWG
-----------	--------

**Operation/Application**

Halogen Free	No
--------------	----

**Other**

--	--



Cable Assembly Configuration	Double Ended
Cable Assembly Length	1 m

### Product Compliance

[For compliance documentation, visit the product page on TE.com>](#)

EU RoHS Directive 2011/65/EU	Compliant
EU ELV Directive 2000/53/EC	Compliant
China RoHS 2 Directive MIIT Order No 32, 2016	No Restricted Materials Above Threshold
EU REACH Regulation (EC) No. 1907/2006	Current ECHA Candidate List: JUNE 2023 (235) Candidate List Declared Against: JUNE 2022 (224) Does not contain REACH SVHC
Halogen Content	Not Low Halogen - contains Br or Cl > 900 ppm.
Solder Process Capability	Not applicable for solder process capability

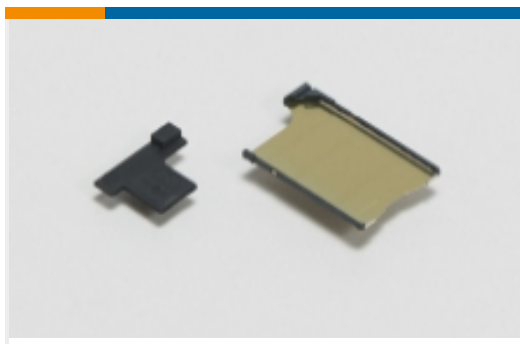
#### Product Compliance Disclaimer

This information is provided based on reasonable inquiry of our suppliers and represents our current actual knowledge based on the information they provided. This information is subject to change. The part numbers that TE has identified as EU RoHS compliant have a maximum concentration of 0.1% by weight in homogenous materials for lead, hexavalent chromium, mercury, PBB, PBDE, DBP, BBP, DEHP, DIBP, and 0.01% for cadmium, or qualify for an exemption to these limits as defined in the Annexes of Directive 2011/65/EU (RoHS2). Finished electrical and electronic equipment products will be CE marked as required by Directive 2011/65/EU. Components may not be CE marked. Additionally, the part numbers that TE has identified as EU ELV compliant have a maximum concentration of 0.1% by weight in homogenous materials for lead, hexavalent chromium, and mercury, and 0.01% for cadmium, or qualify for an exemption to these limits as defined in the Annexes of Directive 2000/53/EC (ELV). Regarding the REACH Regulation, the information TE provides on SVHC in articles for this part number is based on the latest European Chemicals Agency (ECHA) 'Guidance on requirements for substances in articles' posted at this URL: <https://echa.europa.eu/guidance-documents/guidance-on-reach>

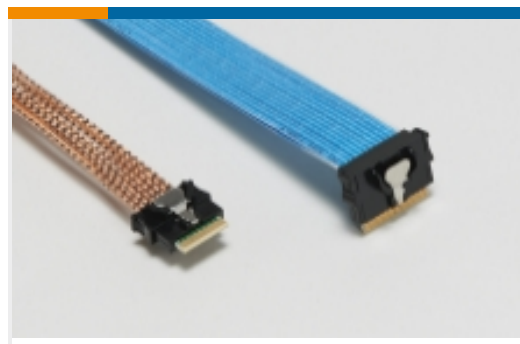
### Compatible Parts



Also in the Series | [Sliver for SFF-TA-1002](#)



Card Guide Hardware(1)

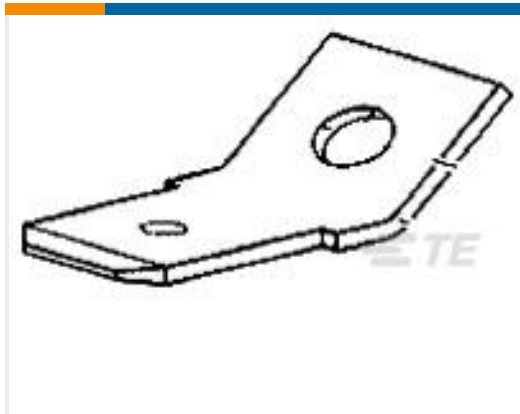


Internal I/O Cable Assemblies(109)



Internal I/O Connectors(135)

## Customers Also Bought



TE Part #60465-1  
250 FASTON TAB BR



TE Part #2201778-1  
MICRO SD PUSH PUSH LOW PROFILE  
TYPE



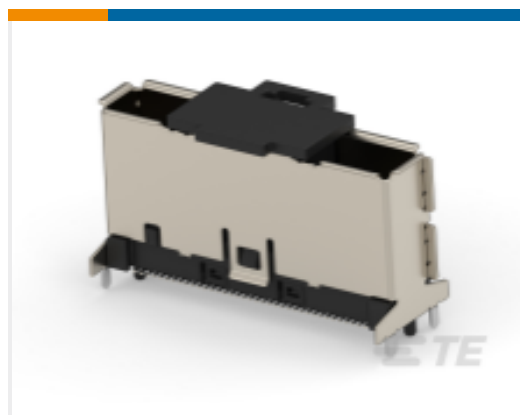
TE Part #5-2176325-2  
CRGP 0402 180K 1%



TE Part #1-2176325-7  
CRGP 0402 220R 1%



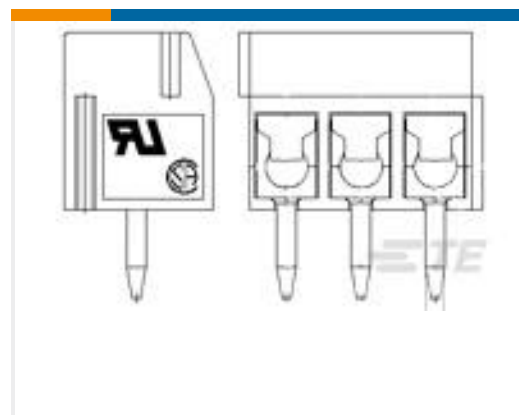
TE Part #4-2176325-1  
CRGP 0402 22K 1%



TE Part #2291316-1  
RCPT CONN VERTICAL 74 POSN  
SLIVER



TE Part #735093  
250 FASTON HSG. REC. 1P NATURAL



TE Part #1776275-2  
Vertical Term Blk Side Wire En



TE Part #41445  
FASTON 250(6.3 MM) REC 18-16 AWG  
BR



TE Part #361510-1  
ATUM-6/2-0-STK

## Documents

### Product Drawings

[SLIVER C/A, 74P, R/A TO R/A, 10GHZ,85OHM](#)

English

### CAD Files

[3D PDF](#)

3D

[Customer View Model](#)

[ENG\\_CVM\\_CVM\\_2821385-2\\_A.2d\\_dxf.zip](#)



English

**Customer View Model**

[ENG\\_CVM\\_CVM\\_2821385-2\\_A.3d\\_igs.zip](#)

English

**Customer View Model**

[ENG\\_CVM\\_CVM\\_2821385-2\\_A.3d\\_stp.zip](#)

English

By downloading the CAD file I accept and agree to the [Terms and Conditions](#) of use.

## Datasheets & Catalog Pages

[Sliver Cable Assembly Technical Datasheet](#)

English

[Sliver Internal Cabled Interconnect Solutions Brochure \(Chinese\)](#)