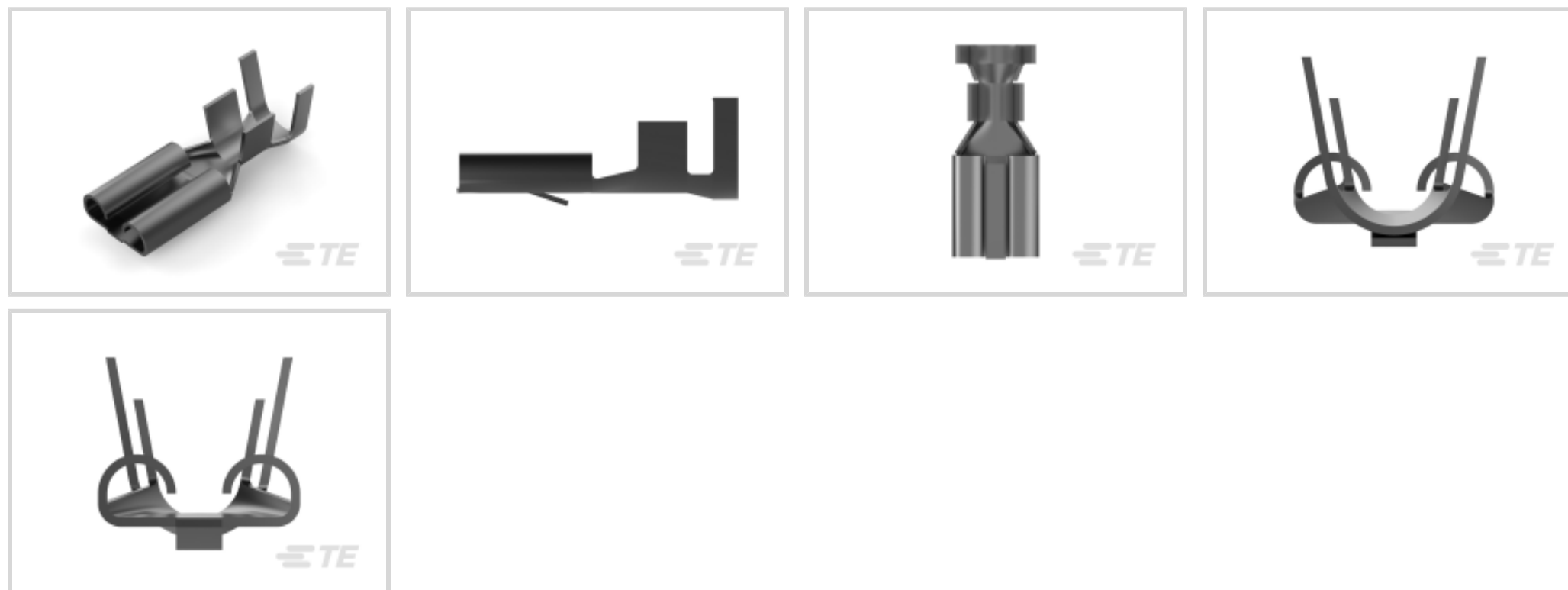




Terminals & Splices > Quick Disconnects



Quick Disconnect Terminal Type: **Receptacle**

Wire Size: **6 – 10 mm²**

Mating Tab Width: **9.53 mm [.375 in]**

Mating Tab Thickness: **1.22 mm [.048 in]**

Features

Product Type Features

| | |
|-----------------|--------|
| Insertion Force | Normal |
|-----------------|--------|

Configuration Features

| | |
|-----------------------------------|---------------|
| Connection Capacity | Single |
| Compatible With Wire & Cable Type | Discrete Wire |

Electrical Characteristics

| | |
|----------------|-------|
| Voltage Rating | 250 V |
|----------------|-------|

Contact Features

| | |
|--------------------------------|-------------------|
| Quick Disconnect Terminal Type | Receptacle |
| Mating Tab Width | 9.53 mm [.375 in] |
| Mating Tab Thickness | 1.22 mm [.048 in] |
| Terminal Orientation | Straight |
| Contact Base Material | Phosphor Bronze |
| Terminal Plating Material | Tin |
| Crimp Type | F-Crimp |



| | |
|-------------|------|
| Barrel Type | Open |
|-------------|------|

Termination Features

| | |
|-----------------------|--------------|
| Product Terminates To | Wire & Cable |
|-----------------------|--------------|

Mechanical Attachment

| | |
|----------------------|---------|
| Locking Lance Height | 1.25 mm |
|----------------------|---------|

| | |
|-------------------------|------|
| Wire Insulation Support | With |
|-------------------------|------|

| | |
|-----------------------|---------------|
| Mating Retention Type | Locking Lance |
|-----------------------|---------------|

Dimensions

| | |
|-----------------------------|----------------|
| Terminal Material Thickness | .51 mm[.02 in] |
|-----------------------------|----------------|

| | |
|----------------|----------------|
| Product Length | 29 mm[1.14 in] |
|----------------|----------------|

| | |
|--------------------------------------|--------------------------|
| Compatible Insulation Diameter Range | 5 – 7 mm[.197 – .276 in] |
|--------------------------------------|--------------------------|

| | |
|-----------|------------------------|
| Wire Size | 6 – 10 mm ² |
|-----------|------------------------|

Usage Conditions

| | |
|-------------------|-------------|
| Insulation Option | Uninsulated |
|-------------------|-------------|

| | |
|-----------------------------|----------------------------|
| Operating Temperature Range | -40 – 110 °C[-40 – 230 °F] |
|-----------------------------|----------------------------|

Industry Standards

| | |
|------------------------|----------|
| UL Flammability Rating | UL 94V-2 |
|------------------------|----------|

Packaging Features

| | |
|--------------------|------|
| Packaging Quantity | 1000 |
|--------------------|------|

| | |
|------------------|------------|
| Packaging Method | Strip/Reel |
|------------------|------------|

Other

| | |
|-----------------------------|--------------------------------|
| Terminals & Splices Comment | According to DIN 46340, Part 4 |
|-----------------------------|--------------------------------|

Product Compliance

[For compliance documentation, visit the product page on TE.com>](#)

| | |
|------------------------------|-----------|
| EU RoHS Directive 2011/65/EU | Compliant |
|------------------------------|-----------|

| | |
|-----------------------------|-----------|
| EU ELV Directive 2000/53/EC | Compliant |
|-----------------------------|-----------|

| | |
|-----------------------------------------------|-----------------------------------------|
| China RoHS 2 Directive MIIT Order No 32, 2016 | No Restricted Materials Above Threshold |
|-----------------------------------------------|-----------------------------------------|

| | |
|----------------------------------------|---------------------------------------------------------------------------------------------------------------------------------|
| EU REACH Regulation (EC) No. 1907/2006 | Current ECHA Candidate List: JUNE 2023 (235) Candidate List Declared Against: JUNE 2023 (235) Does not contain REACH SVHC |
|----------------------------------------|---------------------------------------------------------------------------------------------------------------------------------|



| | |
|---------------------------|-------------------------------------------------------------------------------------|
| Halogen Content | Low Halogen - Br, Cl, F, I < 900 ppm per homogenous material. Also BFR/CFR/PVC Free |
| Solder Process Capability | Not applicable for solder process capability |

Product Compliance Disclaimer

This information is provided based on reasonable inquiry of our suppliers and represents our current actual knowledge based on the information they provided. This information is subject to change. The part numbers that TE has identified as EU RoHS compliant have a maximum concentration of 0.1% by weight in homogenous materials for lead, hexavalent chromium, mercury, PBB, PBDE, DBP, BBP, DEHP, DIBP, and 0.01% for cadmium, or qualify for an exemption to these limits as defined in the Annexes of Directive 2011/65/EU (RoHS2). Finished electrical and electronic equipment products will be CE marked as required by Directive 2011/65/EU. Components may not be CE marked. Additionally, the part numbers that TE has identified as EU ELV compliant have a maximum concentration of 0.1% by weight in homogenous materials for lead, hexavalent chromium, and mercury, and 0.01% for cadmium, or qualify for an exemption to these limits as defined in the Annexes of Directive 2000/53/EC (ELV). Regarding the REACH Regulation, the information TE provides on SVHC in articles for this part number is based on the latest European Chemicals Agency (ECHA) 'Guidance on requirements for substances in articles' posted at this URL: <https://echa.europa.eu/guidance-documents/guidance-on-reach>

Compatible Parts



TE Part # 151667-2
FF 375 REC 4-6MM2 TPBR



TE Part # 280074-2
FF 375 TAB 6-10MM2 PTBR



TE Part # 151667-4
FF 375 REC TERMINAL 11-10 AWG PBR



TE Part # 170268-2
FF 375 REC 6-10MM2 TPBR



TE Part # 2150321-2
OCEAN_2.0_Applicator-E-180F300F



TE Part # 7-2150321-2
OCEAN_2.0_Applicator-E-180F300F



TE Part # 7-2150321-7
OCEAN_2.0_SPARE_PART_KIT-180F300F



TE Part # 880003-4
FF 375 REC 2.5-4.0 MM2 .508X25.65 TPPHBZ



TE Part # 2-2150321-2
OCEAN_2.0_Applicator-E-180F300F

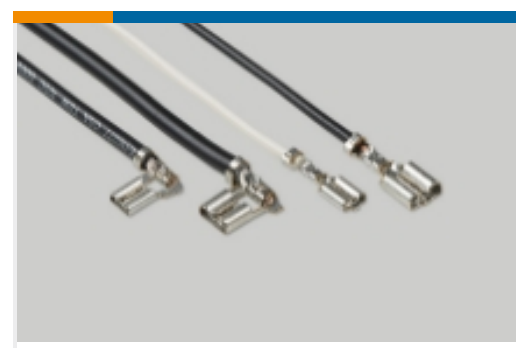
Also in the Series | **FASTIN-FASTON 375**



Crimp Terminal Housings(9)

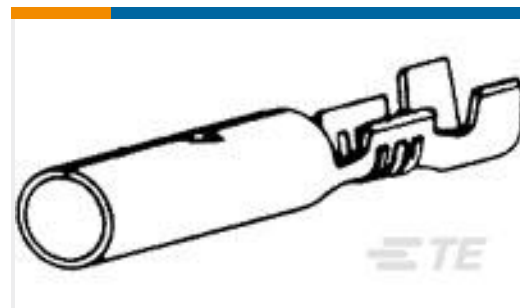
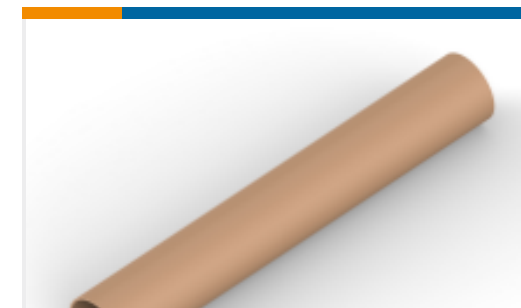


Insertion & Extraction Tools(1)



Quick Disconnects(20)

Customers Also Bought

TE Part #63011-1
250 FASTON FLAG REC 18-14 AWG
BRTE Part #60799-2
SHUR PLUG 180 RECEPTACLE 18-14
AWG BRTE Part #HDP26-18-8PN
PLG, 8P, BLK, N, 12, PTE Part #9840530001
SAS-090-1-1017-1XTE Part #1-1418813-1
PRESS FIT PIN TERMINALSTE Part #2098377-2
20P PLUG ASSEMBLY UNSEALED
HYBRID B-KEYTE Part #1-2364571-9
AVH19 FLT SS MT RNG BLU 24V26A

Documents

Product Drawings

[FF 375 REC 6-10MM2 TPPB](#)

English

CAD Files

[3D PDF](#)

3D

Customer View Model

[ENG_CVM_CVM_280755-4_L.2d_dxf.zip](#)

English

Customer View Model

[ENG_CVM_CVM_280755-4_L.3d_igs.zip](#)

English

Customer View Model

[ENG_CVM_CVM_280755-4_L.3d_stp.zip](#)

English

By downloading the CAD file I accept and agree to the [Terms and Conditions](#) of use.



Datasheets & Catalog Pages

[1654742_HOUSEHOLD_APPLIANCES_RAST5](#)

English

Product Specifications

[FASTIN-FASTON CONN. .110 INCH, .187 INCH, .250 INCH, .375 INCH SRS.](#)

English

[Product Specification](#)

English

Product Environmental Compliance

[Product Compliance](#)

English

[Product Compliance](#)

English