



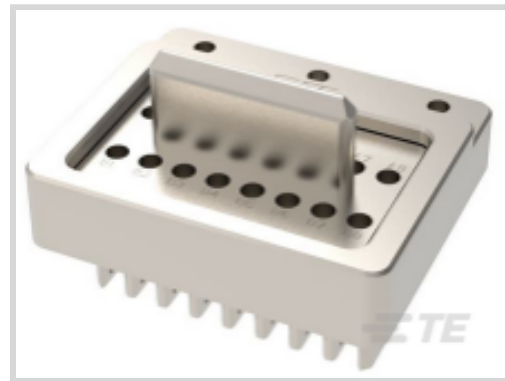
NanoRF

TE Internal #: 2341106-1

PCB RF Modules, 16 Coaxial Contacts, Vertical, Stainless Steel, Cable-to-Cable, 16 Position, 25.4 mm [1 in] Centerline, Wire & Cable, NanoRF

[View on TE.com >](#)

Connectors > RF Connectors > RF Connector Accessories > PCB RF Modules



Number of Coaxial Contacts: **16**

PCB Mount Orientation: **Vertical**

Body Material: **Stainless Steel**

Connector System: **Cable-to-Cable**

Number of Positions: **16**

Features

Product Type Features

Connector System	Cable-to-Cable
Connector & Contact Terminates To	Wire & Cable

Configuration Features

Number of Coaxial Contacts	16
PCB Mount Orientation	Vertical
Number of Positions	16

Electrical Characteristics

Impedance	50 Ω
-----------	------

Body Features

Body Plating Material	Passivated
Body Material	Stainless Steel

Contact Features

RF Connector Center Contact Material	Beryllium Copper
Contact Current Rating (Max)	1 A

Mechanical Attachment

Connector Mounting Type	Panel Mount
-------------------------	-------------

Housing Features



Centerline (Pitch)	25.4 mm[1 in]
--------------------	---------------

Dimensions

RF Contact Spacing	2.79 mm[.11 in]
--------------------	-----------------

Usage Conditions

Operating Temperature Range	-65 – 120 °C[-85 – 248 °F]
-----------------------------	----------------------------

Operation/Application

Circuit Application	Signal
---------------------	--------

Product Compliance

[For compliance documentation, visit the product page on TE.com>](#)

EU RoHS Directive 2011/65/EU	Compliant
EU ELV Directive 2000/53/EC	Compliant
China RoHS 2 Directive MIIT Order No 32, 2016	No Restricted Materials Above Threshold
EU REACH Regulation (EC) No. 1907/2006	Current ECHA Candidate List: JUNE 2023 (235) Candidate List Declared Against: JAN 2021 (211) Does not contain REACH SVHC
Halogen Content	Low Halogen - Br, Cl, F, I < 900 ppm per homogenous material. Also BFR/CFR/PVC Free
Solder Process Capability	Not applicable for solder process capability

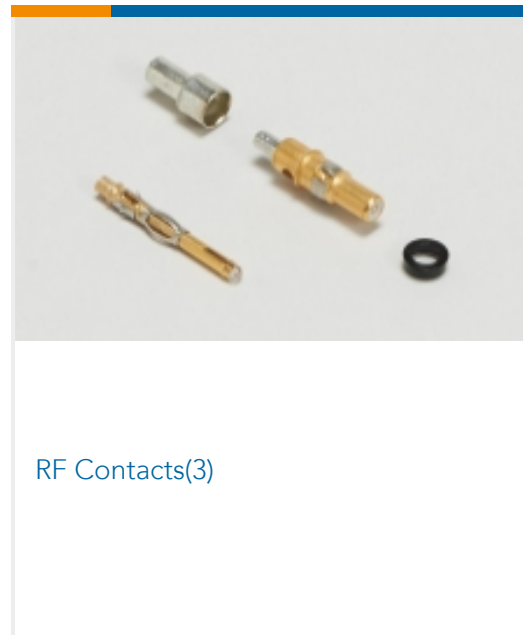
Product Compliance Disclaimer

This information is provided based on reasonable inquiry of our suppliers and represents our current actual knowledge based on the information they provided. This information is subject to change. The part numbers that TE has identified as EU RoHS compliant have a maximum concentration of 0.1% by weight in homogenous materials for lead, hexavalent chromium, mercury, PBB, PBDE, DBP, BBP, DEHP, DIBP, and 0.01% for cadmium, or qualify for an exemption to these limits as defined in the Annexes of Directive 2011/65/EU (RoHS2). Finished electrical and electronic equipment products will be CE marked as required by Directive 2011/65/EU. Components may not be CE marked. Additionally, the part numbers that TE has identified as EU ELV compliant have a maximum concentration of 0.1% by weight in homogenous materials for lead, hexavalent chromium, and mercury, and 0.01% for cadmium, or qualify for an exemption to these limits as defined in the Annexes of Directive 2000/53/EC (ELV). Regarding the REACH Regulation, the information TE provides on SVHC in articles for this part number is based on the latest European Chemicals Agency (ECHA) 'Guidance on requirements for substances in articles' posted at this URL: <https://echa.europa.eu/guidance-documents/guidance-on-reach>

Compatible Parts



Also in the Series | NanoRF



Customers Also Bought

Documents

Product Drawings

NanoRF, BP, 16 Pos 67.3C SS

English

Product Specifications

Product Specification

English

Product Specification

English

Instruction Sheets

Instruction Sheet (U.S.)

English