



Alcoswitch | Alcoswitch LPT

TE Internal #: 2337245-4

Tactile Switches, Round Actuator Style, NO, Stainless Steel, Silver, Low Profile, 50 mA, 12 VDC, Alcoswitch LPT

[View on TE.com >](#)

Relays, Contactors & Switches > Switches > Tactile Switches



Actuator Style: **Round**

Operating Function: **NO**

Contact Base Material: **Stainless Steel**

Switch Contact Plating Material: **Silver**

Dust Proof: **No**

## Features

### Product Type Features

Product Type	Switch
Leg Style	J Style
Illuminated	No
Actuator Style	Round
Dust Proof	No

### Configuration Features

Tactile Feel	Yes
ESD Grounding Terminal	With
Ganged	No
Tactile	Yes
Operating Function	NO
Configuration (Pole-Throw)	Single Pole - Single Throw
Number of Actuators	Single

### Electrical Characteristics

--	--

Tactile Switch Voltage Rating	12 VDC
-------------------------------	--------

### Body Features

Body Style	Horizontal
Cover Material	Nickel, Silver
Case Color	Black
Actuator Force	260 g[9.171 oz]
Case Material	Thermoplastic
Actuator Profile	Extended
Actuator Material	Thermoplastic
Actuator Color	White

### Contact Features

Contact Base Material	Stainless Steel
Switch Contact Plating Material	Silver
Tactile Switch Contact Current Rating	50 mA

### Termination Features

Termination Type	Printed Circuit Board
------------------	-----------------------

### Mechanical Attachment

Tactile Switch Mounting Type	Surface Mount
Tactile Switch Mounting Angle	Vertical

### Housing Features

Low Profile	Yes
Process Sealed	No

### Dimensions

Switch Height	2 mm[.079 in]
---------------	---------------

### Usage Conditions

Temperature Rating	-25 – 70 °C
--------------------	-------------

### Packaging Features

Packaging Method	Tape & Reel
------------------	-------------

### Product Compliance

[For compliance documentation, visit the product page on TE.com>](#)

EU RoHS Directive 2011/65/EU	Compliant
------------------------------	-----------



EU ELV Directive 2000/53/EC	Compliant
China RoHS 2 Directive MIIT Order No 32, 2016	No Restricted Materials Above Threshold
EU REACH Regulation (EC) No. 1907/2006	Current ECHA Candidate List: JUNE 2023 (235) Candidate List Declared Against: JUNE 2023 (235) Does not contain REACH SVHC
Halogen Content	Low Halogen - Br, Cl, F, I < 900 ppm per homogenous material. Also BFR/CFR/PVC Free
Solder Process Capability	Not reviewed for solder process capability

Product Compliance Disclaimer

This information is provided based on reasonable inquiry of our suppliers and represents our current actual knowledge based on the information they provided. This information is subject to change. The part numbers that TE has identified as EU RoHS compliant have a maximum concentration of 0.1% by weight in homogenous materials for lead, hexavalent chromium, mercury, PBB, PBDE, DBP, BBP, DEHP, DIBP, and 0.01% for cadmium, or qualify for an exemption to these limits as defined in the Annexes of Directive 2011/65/EU (RoHS2). Finished electrical and electronic equipment products will be CE marked as required by Directive 2011/65/EU. Components may not be CE marked. Additionally, the part numbers that TE has identified as EU ELV compliant have a maximum concentration of 0.1% by weight in homogenous materials for lead, hexavalent chromium, and mercury, and 0.01% for cadmium, or qualify for an exemption to these limits as defined in the Annexes of Directive 2000/53/EC (ELV). Regarding the REACH Regulation, the information TE provides on SVHC in articles for this part number is based on the latest European Chemicals Agency (ECHA) 'Guidance on requirements for substances in articles' posted at this URL: <https://echa.europa.eu/guidance-documents/guidance-on-reach>

## Compatible Parts



TE Part # 2337234-1  
TACT MICRO JB 4.6X4.4X0.55 P3.5  
100GF



TE Part # 2337234-2  
TACT MICRO JB 4.6X4.4X0.55 P3.5  
160GF



TE Part # 2337234-3  
TACT MICRO JB 4.6X4.4X0.55 P3.5  
200GF



TE Part # 2337224-1  
TACT ULTRA TB 2.6X1.6X0.55 160GF



TE Part # 2337225-1  
TACT ULTRA TB 2.8X1.9X0.6 160GF

Also in the Series | **Alcoswitch LPT**



Tactile Switches(52)

## Customers Also Bought



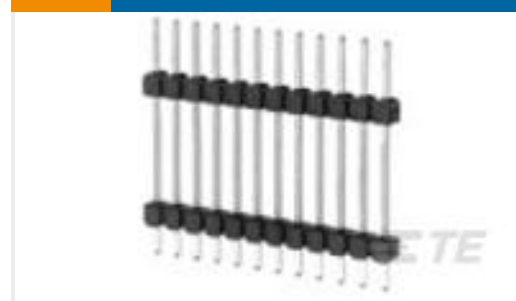
TE Part #31886  
PIDG R 22-16 COMM 22-18 MIL 8



TE Part #3-1734839-0  
FPC CONN. 0.5MM PITCH T/C,30P



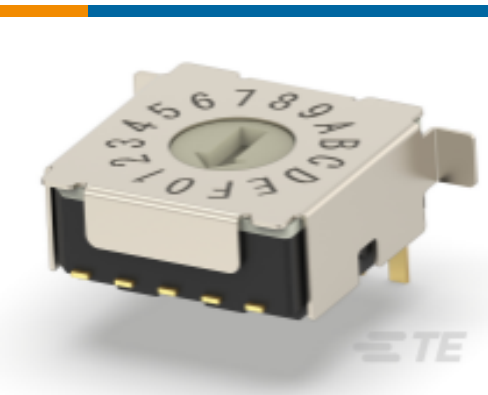
TE Part #87221-5  
06 MODII HDR SRST UNSHRD .150



TE Part #9-146462-0  
40 MODII HDR SRST UNSHRD STKG



TE Part #5-2176337-1  
CRGCQ 0402 150K 1%



TE Part #1-2396236-6  
MRSSH 1.27 SS SD REA 16 SMT GULL T&R



TE Part #2337243-1  
TACT MINI JB 5.2X5.2X1.5 70GF



TE Part #770904-1  
MINI UMNL SOK 22-18 AWG SN



TE Part #BAT-HLD-001  
Battery Holder Coin 2032 SMT Nickel Bulk



TE Part #A22899-000  
CPGI-1116377-2

## Documents

### Product Drawings

[TACT MINI JB 5.2X5.2X2 260GF](#)

English

### CAD Files

[Customer View Model](#)

[ENG\\_CVM\\_CVM\\_2337245-4\\_B.3d\\_igs.zip](#)

English

[Customer View Model](#)



[ENG\\_CVM\\_CVM\\_2337245-4\\_B.3d\\_stp.zip](#)

English

**Customer View Model**

[ENG\\_CVM\\_CVM\\_2337245-4\\_B.2d\\_dxf.zip](#)

English

**3D PDF**

3D

By downloading the CAD file I accept and agree to the [Terms and Conditions](#) of use.

---

### Datasheets & Catalog Pages

[MSLPT Family-Low-profile Tactile Switches](#)

English