



Connectors > Connector Accessories > Connector Seals & Cavity Plugs



Connector Seal & Plug Type: **Interface Seal**
Primary Product Material: **Silicone Rubber**
Primary Product Color: **Blue**
Operating Temperature (Max): **105 °C [221 °F]**
Number of Positions: **1**

Features

Product Type Features

Connector Seal & Plug Type	Interface Seal
----------------------------	----------------

Configuration Features

Number of Positions	1
---------------------	---

Body Features

Primary Product Material	Silicone Rubber
Primary Product Color	Blue

Usage Conditions

Operating Temperature (Max)	105 °C[221 °F]
Operating Temperature Range	-30 – 105 °C[-22 – 221 °F]

Product Compliance

[For compliance documentation, visit the product page on TE.com>](#)

EU RoHS Directive 2011/65/EU	Compliant
EU ELV Directive 2000/53/EC	Not Yet Reviewed
China RoHS 2 Directive MIIT Order No 32, 2016	No Restricted Materials Above Threshold
EU REACH Regulation (EC) No. 1907/2006	Current ECHA Candidate List: JUNE 2023 (235) Candidate List Declared Against: JUNE 2023 (235)



Does not contain REACH SVHC

Halogen Content	Low Halogen - Br, Cl, F, I < 900 ppm per homogenous material. Also BFR/CFR/PVC Free
Solder Process Capability	Not reviewed for solder process capability

Product Compliance Disclaimer

This information is provided based on reasonable inquiry of our suppliers and represents our current actual knowledge based on the information they provided. This information is subject to change. The part numbers that TE has identified as EU RoHS compliant have a maximum concentration of 0.1% by weight in homogenous materials for lead, hexavalent chromium, mercury, PBB, PBDE, DBP, BBP, DEHP, DIBP, and 0.01% for cadmium, or qualify for an exemption to these limits as defined in the Annexes of Directive 2011/65/EU (RoHS2). Finished electrical and electronic equipment products will be CE marked as required by Directive 2011/65/EU. Components may not be CE marked. Additionally, the part numbers that TE has identified as EU ELV compliant have a maximum concentration of 0.1% by weight in homogenous materials for lead, hexavalent chromium, and mercury, and 0.01% for cadmium, or qualify for an exemption to these limits as defined in the Annexes of Directive 2000/53/EC (ELV). Regarding the REACH Regulation, the information TE provides on SVHC in articles for this part number is based on the latest European Chemicals Agency (ECHA) ‘Guidance on requirements for substances in articles’ posted at this URL: <https://echa.europa.eu/guidance-documents/guidance-on-reach>

Compatible Parts




TE Part # 1-2345728-1
Power Versa-Lock PLUG, 1X1 KEY A




TE Part # 1-2381260-1
Power Versa-Lock PLUG, 1X1 KEY A, GWT


Also in the Series | Power Versa-Lock 5.0



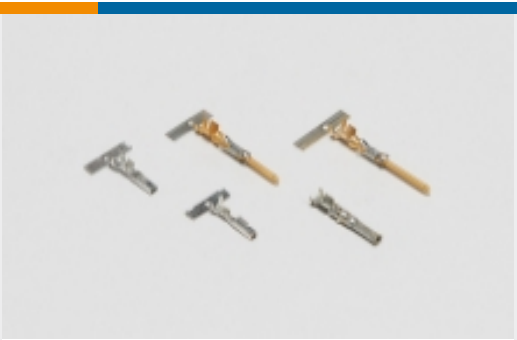
Connector Caps & Covers(3)



Connector Seals & Cavity Plugs(9)



Insertion & Extraction Tools(2)



Power Contacts(12)



Rectangular Connector Locking(5)



Rectangular Power Connectors(77)

Customers Also Bought



TE Part #1-480698-0
02P UMNL PLUG HSG NATL



TE Part #1-480705-0
06P UMNL CAP HSG NATL



TE Part #61944-2
250 FASTON REC 18-14 AWG TPBR



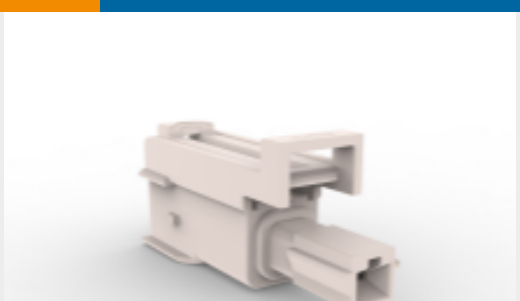
TE Part #60851-1
250 FASTON REC 12-10 AWG TPBR



TE Part #5201946022
RT-3-NO.3-0-1IN



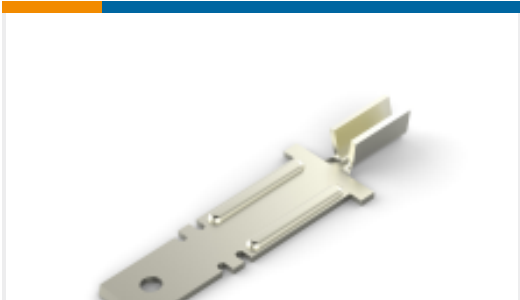
TE Part #2238066-1
PTL RECEPTACLE CONTACT, 18 AWG



TE Part #1-2345728-1
Power Versa-Lock PLUG, 1X1 KEY A



TE Part #2334614-1
Power Versa-Lock BACK COVER 1P



TE Part #1742583-1
FASTON 312 TAB NPST

Documents

Product Drawings

Power Versa-Lock INTERFACE SEAL, 1X1

English

CAD Files

Customer View Model

ENG_CVM_CVM_2325347-1_A1.3d_stp.zip

English

Customer View Model



[ENG_CVM_CVM_2325347-1_A1.3d_igs.zip](#)

English

[3D PDF](#)

3D

Customer View Model

[ENG_CVM_CVM_2325347-1_A1.2d_dxf.zip](#)

English

By downloading the CAD file I accept and agree to the [Terms and Conditions](#) of use.

[Product Specifications](#)

[Application Specification](#)

English