

2278730-1 ✓ ACTIVE

AMP | Heavy Duty Sealed Connector Series

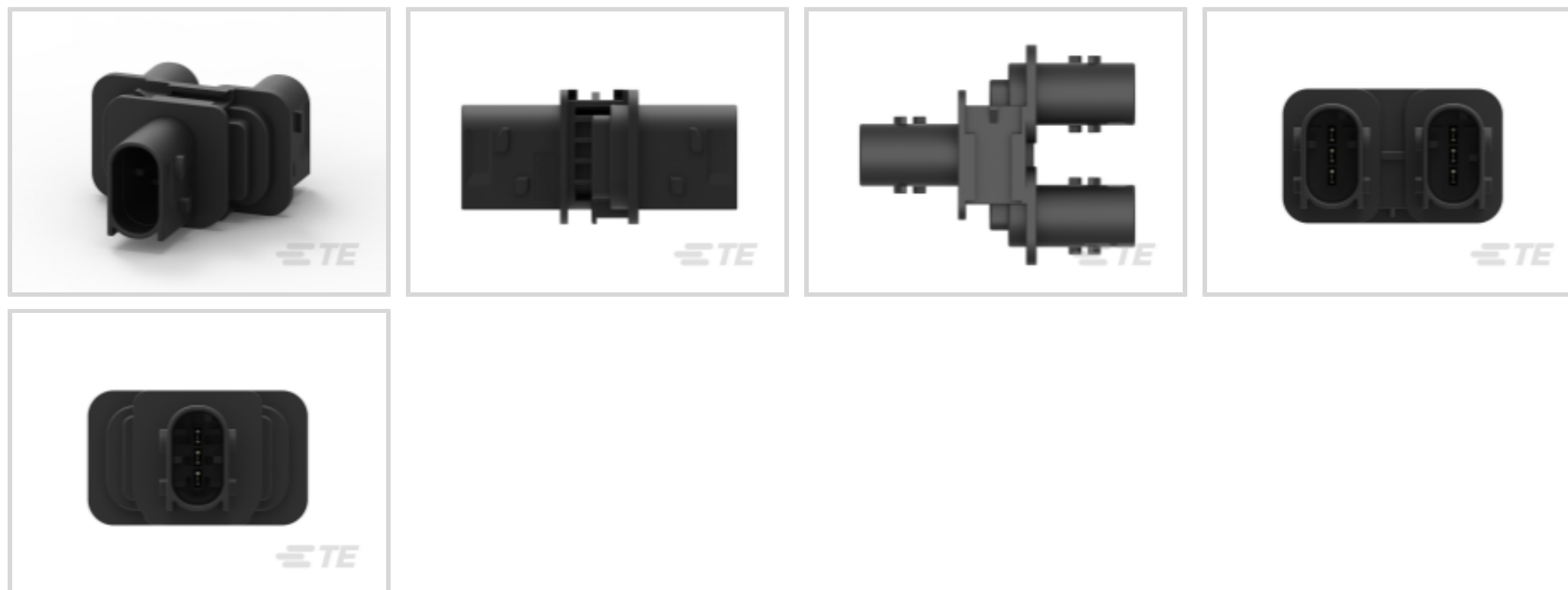
TE Internal #: 2278730-1

Housing for Male Terminals, Wire-to-Wire, 3 Position, .157 in [4 mm] Centerline, Sealable, Black, Signal, Heavy Duty Sealed Connector Series

[View on TE.com >](#)



Connectors > Automotive Connectors > Automotive Housings > Heavy Duty Sealed Connector Series Housings



Connector System: **Wire-to-Wire**

Number of Positions: **3**

Connector & Housing Type: **Housing for Male Terminals**

Centerline (Pitch): **4 mm [.157 in]**

Sealable: **Yes**

[All Heavy Duty Sealed Connector Series Housings \(204\)](#)

Features

Product Type Features

Mixed & Hybrid Connector	No
Connector Shape	Rectangular
Connector System	Wire-to-Wire
Connector & Housing Type	Housing for Male Terminals
Sealable	Yes
Primary Locking Feature	On the Terminal

Configuration Features

Number of Positions	3
Number of Rows	2

Electrical Characteristics

Operating Voltage	42 VDC
Nominal Voltage Architecture	12 V, 24 V, 42 V



Body Features

Primary Product Color	Black
Connector & Keying Code	A-B-C

Contact Features

Contact Size	1.5K
Contact Type	Tab
Mating Tab Width	1.5 mm[.06 in]
Contact Current Rating (Max)	20 A

Mechanical Attachment

Terminal Position Assurance	No
Strain Relief	Without
Mating Alignment Type	Keyed
Mating Alignment	With
Connector Mounting Type	Cable Mount (Free-Hanging)

Housing Features

Housing Material	PBT GF
Centerline (Pitch)	4 mm[.157 in]

Dimensions

Connector Height	42.4 mm[1.66 in]
Product Width	53.1 mm[2.09 in]
Product Length	25.9 mm[1.01 in]

Usage Conditions

Operating Temperature (Max)	70 °C, 80 °C, 85 °C, 90 °C, 100 °C, 105 °C, 110 °C, 120 °C, 125 °C, 130 °C, 140 °C[158 °F][167 °F][176 °F][185 °F][194 °F][212 °F][221 °F][230 °F][248 °F][257 °F][266 °F][284 °F]
Operating Temperature Range	-40 – 140 °C[-40 – 284 °F]

Operation/Application

Circuit Application	Signal
---------------------	--------

Industry Standards

Degree of Protection	IP67, IP69K
----------------------	-------------

Other

Serviceable	No
-------------	----



Connector Position Assurance Capable No

Product Compliance

[For compliance documentation, visit the product page on TE.com>](#)

EU RoHS Directive 2011/65/EU	Compliant
EU ELV Directive 2000/53/EC	Compliant
China RoHS 2 Directive MIIT Order No 32, 2016	No Restricted Materials Above Threshold
EU REACH Regulation (EC) No. 1907/2006	Current ECHA Candidate List: JUNE 2023 (235) Candidate List Declared Against: JAN 2023 (233) Does not contain REACH SVHC
Halogen Content	Not Low Halogen - contains Br or Cl > 900 ppm.
Solder Process Capability	Not reviewed for solder process capability

Product Compliance Disclaimer

This information is provided based on reasonable inquiry of our suppliers and represents our current actual knowledge based on the information they provided. This information is subject to change. The part numbers that TE has identified as EU RoHS compliant have a maximum concentration of 0.1% by weight in homogenous materials for lead, hexavalent chromium, mercury, PBB, PBDE, DBP, BBP, DEHP, DIBP, and 0.01% for cadmium, or qualify for an exemption to these limits as defined in the Annexes of Directive 2011/65/EU (RoHS2). Finished electrical and electronic equipment products will be CE marked as required by Directive 2011/65/EU. Components may not be CE marked. Additionally, the part numbers that TE has identified as EU ELV compliant have a maximum concentration of 0.1% by weight in homogenous materials for lead, hexavalent chromium, and mercury, and 0.01% for cadmium, or qualify for an exemption to these limits as defined in the Annexes of Directive 2000/53/EC (ELV). Regarding the REACH Regulation, the information TE provides on SVHC in articles for this part number is based on the latest European Chemicals Agency (ECHA) 'Guidance on requirements for substances in articles' posted at this URL: <https://echa.europa.eu/guidance-documents/guidance-on-reach>

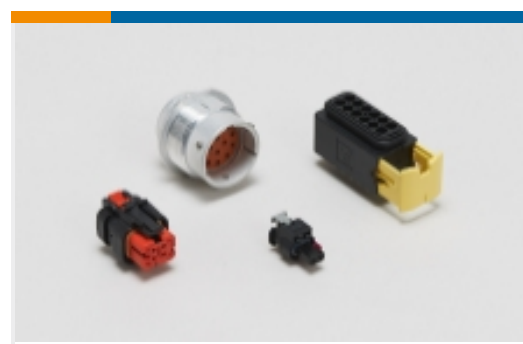
Compatible Parts

 <p>TE Part # 2112302-1 PROTECTION CAP, FOR REC.HSG GROUP D</p>	 <p>TE Part # 2306960-1 3POS,AMP MCP 1.5K,REC HSG ASSY, SLD,COD A</p>	 <p>TE Part # 1-1418448-2 3POS MCP1.5k REC HSG CO MID POS CLOSED</p>
--	---	---

Also in the Series | [Heavy Duty Sealed Connector Series](#)



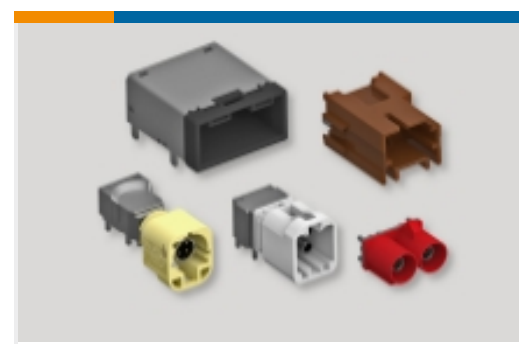
Automotive Connector Caps & Covers (25)



Automotive Housings(207)



Connector Seals & Cavity Plugs(5)



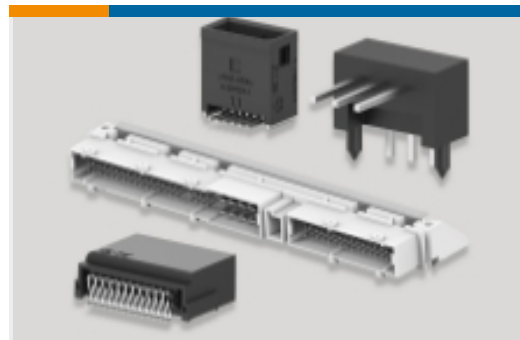
Data Connectivity Headers(2)



Data Connectivity Housings(18)



Other Automotive Connector Accessories(34)



PCB Headers & Receptacles(1)

Customers Also Bought



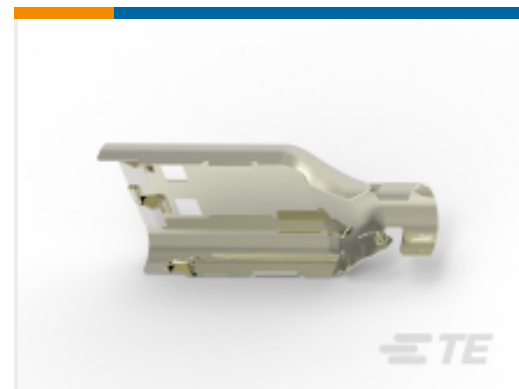
TE Part #2112301-1
PROTECTION CAP, FOR REC.HSG GROUP C



TE Part #1-776266-2
14POS,PIN DIA 1.3,HDR ASSY,90DEG, COD 2



TE Part #1587724-2
OUTER FERRULE, SIZE B, HVA280



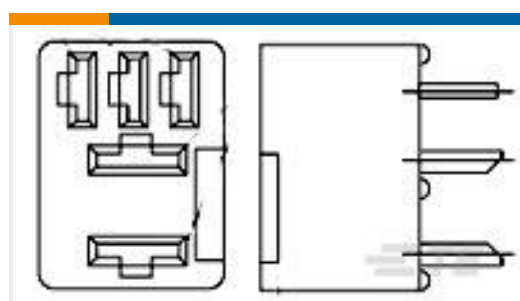
TE Part #1-2103157-2
SHIELD, PLUG, SIZE 2, Ag, HVA280



TE Part #4-1703639-1
12POS,AMP MCP1.5K,REC HSG,ASSY, CODD



TE Part #91573-1
CCII 070 SERIES REC TAB 20-16 ASSY



TE Part #1393310-2
VCFM-1000=FROM SEC



TE Part #2103013-2
CABLE SEAL RETAINER, SIZE 2, BK, HVA280



TE Part #2289729-1
KIT, HOUSING, CPA, INLINE FEMALE, FAKRA



TE Part #26QDKLF007
Madison Spec 101-3205 Rev. 3

Documents



CAD Files

3D PDF

3D

Customer View Model

[ENG_CVM_CVM_2278730-1_A.2d_dxf.zip](#)

English

Customer View Model

[ENG_CVM_CVM_2278730-1_A.3d_igs.zip](#)

English

Customer View Model

[ENG_CVM_CVM_2278730-1_A.3d_stp.zip](#)

English

By downloading the CAD file I accept and agree to the [Terms and Conditions](#) of use.

Datasheets & Catalog Pages

[HDSCS CAN Bus Y-Connector and 120 Resistor Brochure](#)

English

[HDSCS Catalog](#)

English

[ICT Terminals and Connectors Catalogue](#)

English