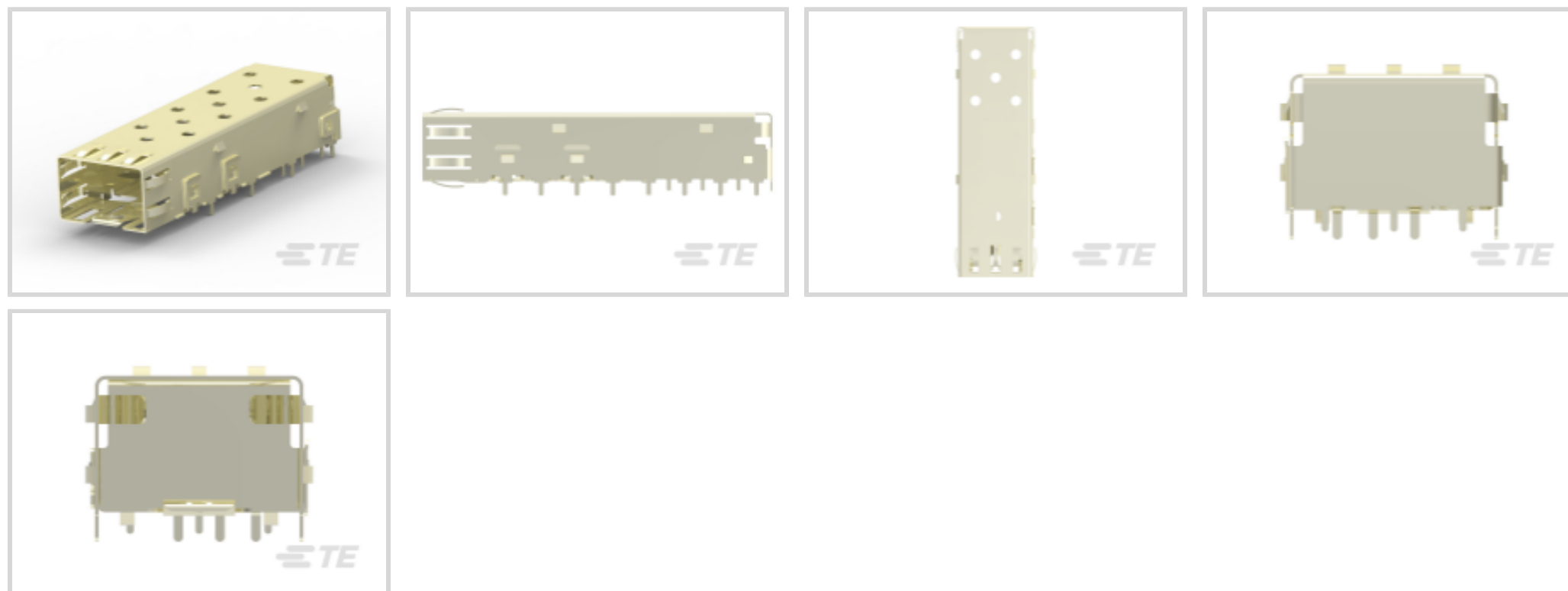




TE Internal #: 2227303-2  
 SFP, SFP+ & zSFP+, Cage, Data Rate (Max) 4 Gb/s, Internal /External EMI Springs, zSFP+ Thermally Enhanced, Not Optional, 1 x 1, Through Hole - Solder

[View on TE.com >](#)

Connectors > Pluggable IO Connectors & Cages > SFP, SFP+ & zSFP+



Pluggable I/O Product Type: **Cage**

Data Rate (Max): **4 Gb/s**

EMI Containment Feature Type: **Internal/External EMI Springs**

Pluggable I/O Applications: **zSFP+ Thermally Enhanced**

Lightpipe Options: **Not Optional**

## Features

### Product Type Features

Form Factor	SFP
Cage Type	Single
Pluggable I/O Product Type	Cage
Lightpipe Options	Not Optional
Connector System	Cable-to-Board
Sealable	No
Connector & Contact Terminates To	Printed Circuit Board

### Configuration Features

Port Matrix Configuration	1 x 1
Number of Ports	1

### Electrical Characteristics

Data Rate (Max)	4 Gb/s
-----------------	--------

### Contact Features

Tail Plating Material	Tin
-----------------------	-----



### Termination Features

Termination Post & Tail Length	1.8 mm[.071 in]
Termination Method to Printed Circuit Board	Through Hole - Solder

### Mechanical Attachment

Connector Mounting Type	Board Mount
-------------------------	-------------

### Housing Features

Cage Material	Stainless Steel
---------------	-----------------

### Dimensions

PCB Thickness (Recommended)	1.5 mm[.059 in]
-----------------------------	-----------------

### Usage Conditions

Operating Temperature Range	-55 – 85 °C[-67 – 185 °F]
-----------------------------	---------------------------

### Operation/Application

Heat Sink Compatible	No
For Use With Pluggable I/O Products	SFP SMT Connector
Pluggable I/O Applications	zSFP+ Thermally Enhanced

### Packaging Features

Packaging Method	Reel
------------------	------

### Other

EMI Containment Feature Type	Internal/External EMI Springs
------------------------------	-------------------------------

## Product Compliance

[For compliance documentation, visit the product page on TE.com>](#)

EU RoHS Directive 2011/65/EU	Compliant
EU ELV Directive 2000/53/EC	Compliant
China RoHS 2 Directive MIIT Order No 32, 2016	No Restricted Materials Above Threshold
EU REACH Regulation (EC) No. 1907/2006	Current ECHA Candidate List: JUNE 2023 (235) Candidate List Declared Against: JUNE 2023 (235) Does not contain REACH SVHC
Halogen Content	Low Halogen - Br, Cl, F, I < 900 ppm per homogenous material. Also BFR/CFR/PVC Free
Solder Process Capability	Wave solder capable to 260°C

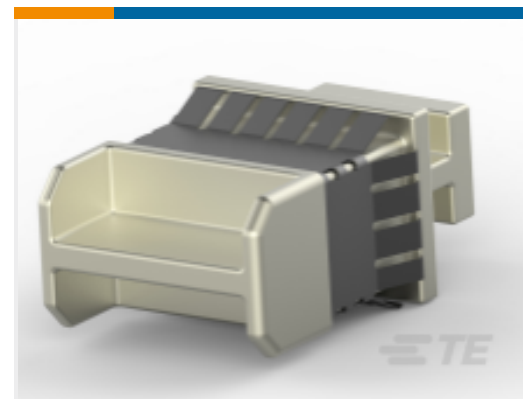
Product Compliance Disclaimer

This information is provided based on reasonable inquiry of our suppliers and represents our current actual knowledge based on the information they provided. This information is subject to change. The part numbers that TE has identified as EU RoHS compliant have a maximum concentration of 0.1% by weight in homogenous materials for lead, hexavalent chromium, mercury, PBB, PBDE, DBP, BBP, DEHP, DIBP, and 0.01% for cadmium, or qualify for an exemption to these limits as defined in the Annexes of Directive 2011/65/EU (RoHS2). Finished electrical and electronic equipment products will be CE marked as required by Directive 2011/65/EU. Components may not be CE marked. Additionally, the part numbers that TE has identified as EU ELV compliant have a maximum concentration of 0.1% by weight in homogenous materials for lead, hexavalent chromium, and mercury, and 0.01% for cadmium, or qualify for an exemption to these limits as defined in the Annexes of Directive 2000/53/EC (ELV). Regarding the REACH Regulation, the information TE provides on SVHC in articles for this part number is based on the latest European Chemicals Agency (ECHA) 'Guidance on requirements for substances in articles' posted at this URL: <https://echa.europa.eu/guidance-documents/guidance-on-reach>

## Compatible Parts



TE Part # CAT-SF59-C76264  
SFP Connectors



TE Part # 1888901-1  
SFP+ EMI Plug



TE Part # 1367147-1  
SFP COVER, UNPLATED



TE Part # 1367147-3  
SFP COVER, UNPL, NO LOGO



TE Part # 1761394-1  
DUST COVER, SFP, GANGED & STACKED

## Customers Also Bought



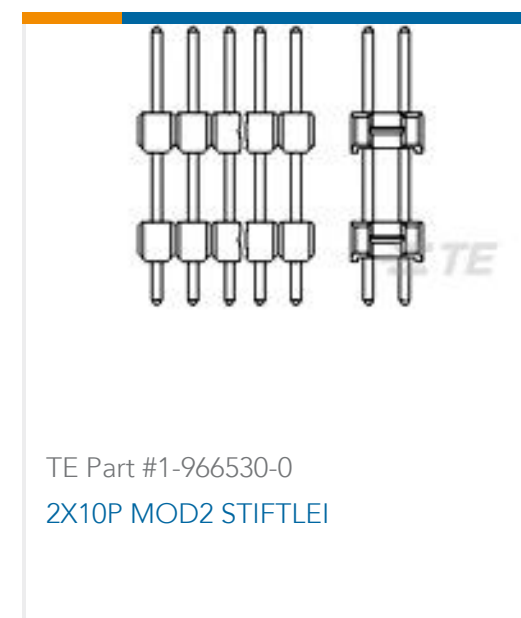
TE Part #4-1609157-6  
3EJT8F=F8142A



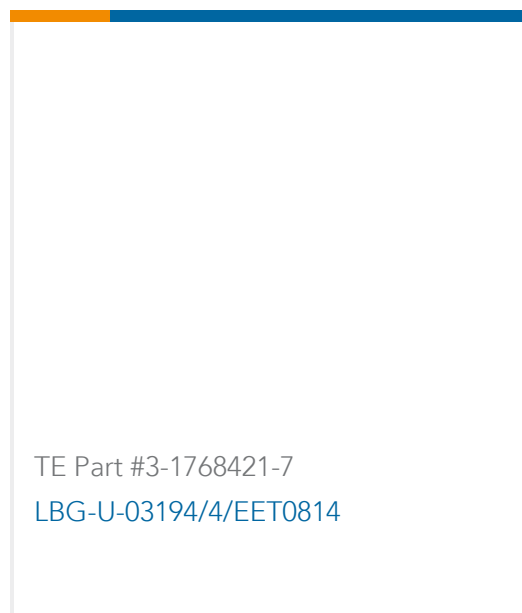
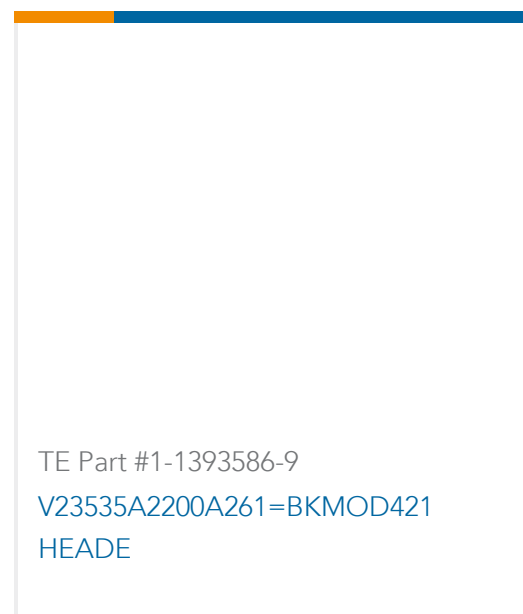
TE Part #1241050-5  
2x5P MOD II BREAK AWAY HDR,SMD, BLISTER



TE Part #5414409-1  
BNC PCB RT ANG JACK W/POST



TE Part #1-966530-0  
2X10P MOD2 STIFTLI



## Documents

### CAD Files

#### Customer View Model

[ENG\\_CVM\\_CVM\\_2227303-2\\_C1.3d\\_stp.zip](#)

English

#### Customer View Model

[ENG\\_CVM\\_CVM\\_2227303-2\\_C1.2d\\_dxf.zip](#)

English

#### Customer View Model

[ENG\\_CVM\\_CVM\\_2227303-2\\_C1.3d\\_igs.zip](#)

English

### 3D PDF

3D

By downloading the CAD file I accept and agree to the [Terms and Conditions](#) of use.

### Product Specifications

#### Application Specification

English

### Product Environmental Compliance

#### Product Compliance Document

English

#### Product Compliance Document

English