



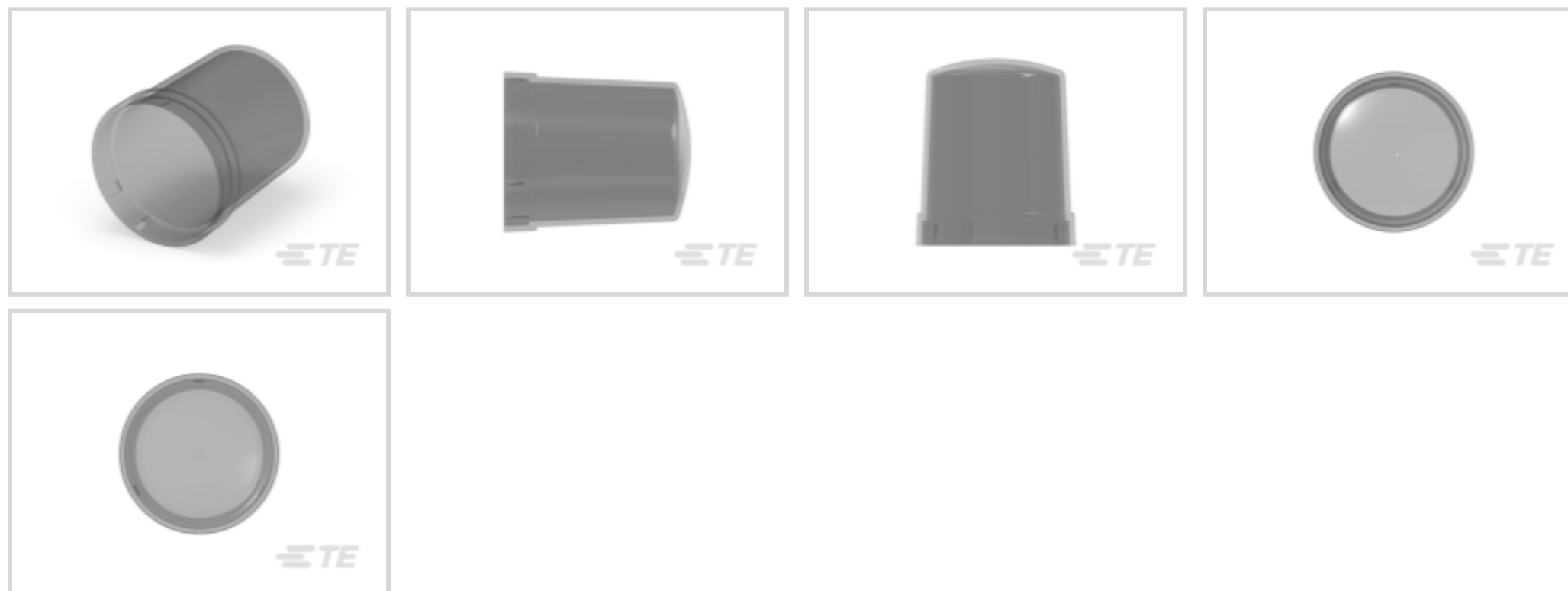
LUMAWISE | LUMAWISE Endurance N

TE Internal #: 2213748-1

ANSI Street Lighting Accessories, Cover, Gray, Diameter 76 mm [3 in], Not Vented / Sleeve Compatible, LUMAWISE Endurance N

[View on TE.com >](#)

Connectors > Lighting Connectors > Street Lighting Controls > ANSI Street Lighting Accessories > Photo Control Cover



Lighting Product Type: **Cover**

Primary Product Color: **Gray**

Product Diameter: **76 mm [ 3 in ]**

Lighting Connector Features Included: **Not Vented, Sleeve Compatible**

[All Photo Control Cover \(10\)](#)

### Features

#### Product Type Features

Lighting Product Type	Cover
-----------------------	-------

#### Configuration Features

Lighting Connector Features Included	Not Vented, Sleeve Compatible
--------------------------------------	-------------------------------

#### Body Features

Primary Product Color	Gray
-----------------------	------

#### Dimensions

Product Diameter	76 mm[3 in]
------------------	-------------

### Product Compliance

[For compliance documentation, visit the product page on TE.com>](#)

EU RoHS Directive 2011/65/EU	Compliant
EU ELV Directive 2000/53/EC	Compliant
China RoHS 2 Directive MIIT Order No 32, 2016	No Restricted Materials Above Threshold



EU REACH Regulation (EC) No. 1907/2006

Current ECHA Candidate List: JUNE 2023 (235)

Candidate List Declared Against: JUNE 2023 (235)

Does not contain REACH SVHC

Halogen Content

Low Halogen - Br, Cl, F, I < 900 ppm per homogenous material. Also BFR/CFR/PVC Free

Solder Process Capability

Not applicable for solder process capability

Product Compliance Disclaimer

This information is provided based on reasonable inquiry of our suppliers and represents our current actual knowledge based on the information they provided. This information is subject to change. The part numbers that TE has identified as EU RoHS compliant have a maximum concentration of 0.1% by weight in homogenous materials for lead, hexavalent chromium, mercury, PBB, PBDE, DBP, BBP, DEHP, DIBP, and 0.01% for cadmium, or qualify for an exemption to these limits as defined in the Annexes of Directive 2011/65/EU (RoHS2). Finished electrical and electronic equipment products will be CE marked as required by Directive 2011/65/EU. Components may not be CE marked. Additionally, the part numbers that TE has identified as EU ELV compliant have a maximum concentration of 0.1% by weight in homogenous materials for lead, hexavalent chromium, and mercury, and 0.01% for cadmium, or qualify for an exemption to these limits as defined in the Annexes of Directive 2000/53/EC (ELV). Regarding the REACH Regulation, the information TE provides on SVHC in articles for this part number is based on the latest European Chemicals Agency (ECHA) 'Guidance on requirements for substances in articles' posted at this URL: <https://echa.europa.eu/guidance-documents/guidance-on-reach>


### Compatible Parts



TE Part # CAT-ST833-P5663A  
Photo Control Base



TE Part # 1-2325661-1  
LUMAWISE ENDURANCE N SHRTG CAP BASE VENT



TE Part # 1-2336396-1  
ASSEMBLY, LIGHT CONTROLLER BASE, W/VENT



TE Part # 2325661-1  
LUMAWISE ENDURANCE N SHRTNG CAP BASE ASM



TE Part # 1-2213730-1  
LIGHT CONTROL BASE ASSY76MM 7 POSITION



TE Part # 1-2213871-3  
LIGHT CONTROLLER BASE ASSY, 76MM DIA,3POS

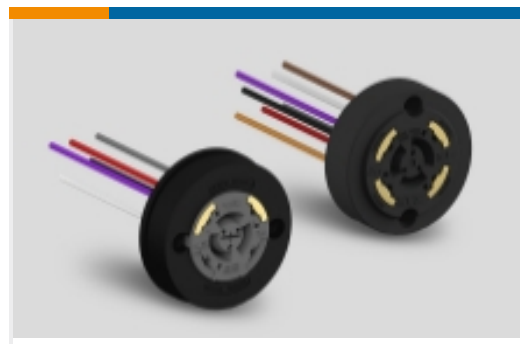
### Also in the Series | LUMAWISE Endurance N



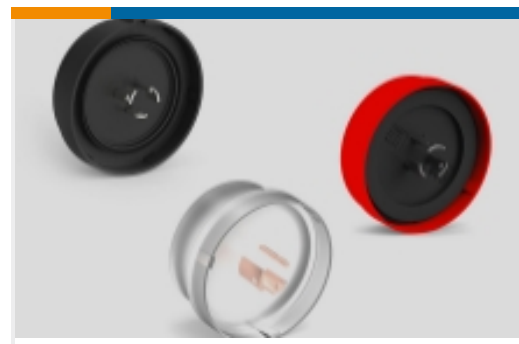
ANSI Street Lighting Accessories(18)



ANSI Street Lighting Base Assemblies (13)



ANSI Street Lighting Receptacles(25)



Street Lighting Open & Shorting Caps (3)

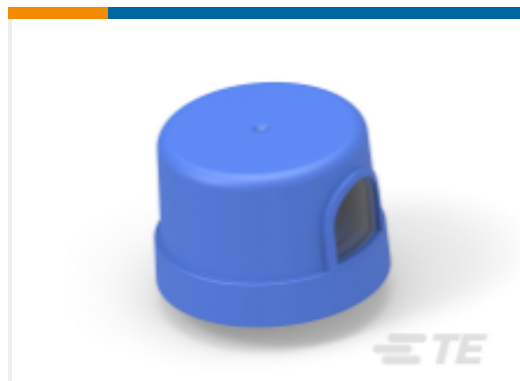


Street Lighting Power Management(6)

## Customers Also Bought



TE Part #1775469-3  
AMP HPI 2.0 mm Headers



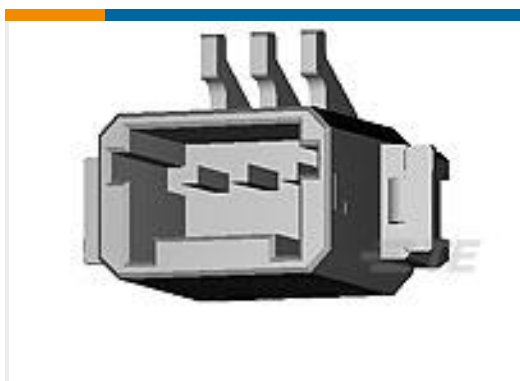
TE Part #812812-000  
ALR-BF-PV



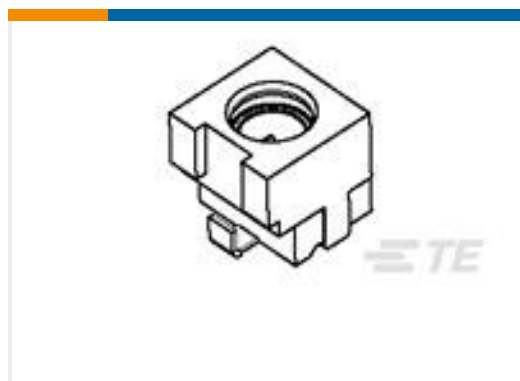
TE Part #1734577-4  
MOD-JK,8P8C,SHD W/LED, G/Y,50U"



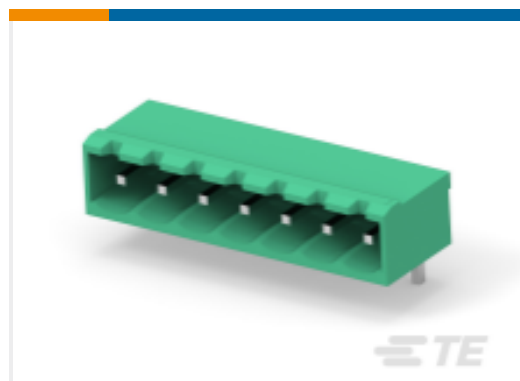
TE Part #2174803-2  
PUSH-PUSH MICRO SIM CONNECTOR



TE Part #2106091-2  
3 pos Inverted Thru Board SMT Header



TE Part #6-1460820-2  
V23608A1227B 2=MMCX SMD Jack Lead-fr



TE Part #2350513-7  
7POS TB HDR 90 DEG, PITCH 5.0 & TL 4.5mm



TE Part #2-2176326-9  
CRGP 0603 2K2 1%

## Documents

### Product Drawings

COVER,LIGHT CONTROLLER,76MM DIA,MEDIUM

English

### CAD Files

3D PDF

3D

Customer View Model

ENG\_CVM\_CVM\_2213748-1\_D.2d\_dxf.zip



English

Customer View Model

[ENG\\_CVM\\_CVM\\_2213748-1\\_D.3d\\_igs.zip](#)

English

Customer View Model

[ENG\\_CVM\\_CVM\\_2213748-1\\_D.3d\\_stp.zip](#)

English

By downloading the CAD file I accept and agree to the [Terms and Conditions](#) of use.

---

### Datasheets & Catalog Pages

[LUMAWISE STREET LIGHT DIMMING AND CONTROL QUICK REFERENCE GUIDE](#)

English

[LUMAWISE ENDURANCE N CONTROL BASE, SLEEVE AND COVER](#)

[LUMAWISE ENDURANCE N CONTROL BASE, SLEEVE AND COVER](#)

English

[Photo Control Base and Cover flyer \(Chinese\)](#)

English

---

### Product Specifications

[Application Specification](#)

English

---

### Product Environmental Compliance

[Product Compliance](#)

English

[Product Compliance](#)

English

---

### Agency Approvals

[UL\\_CERT\\_CB\\_US\\_37285\\_C1](#)

English