

2205109-2 x OBSOLETE

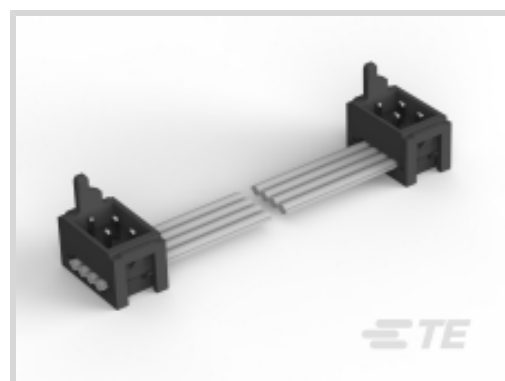
Micro-MaTch Value Line

TE Internal #: 2205109-2

TE Internal Description: CA 150MM 16 POS. MOW-MOW M-M

VALUE LINE

[View on TE.com >](#)



Product Compliance

[For compliance documentation, visit the product page on TE.com>](#)

EU RoHS Directive 2011/65/EU	Compliant
EU ELV Directive 2000/53/EC	Compliant
China RoHS 2 Directive MIIT Order No 32, 2016	No Restricted Materials Above Threshold
EU REACH Regulation (EC) No. 1907/2006	Current ECHA Candidate List: JUNE 2023 (235) Candidate List Declared Against: JUNE 2022 (224) Does not contain REACH SVHC
Halogen Content	Not Low Halogen - contains Br or Cl > 900 ppm.
Solder Process Capability	Not applicable for solder process capability

Product Compliance Disclaimer

This information is provided based on reasonable inquiry of our suppliers and represents our current actual knowledge based on the information they provided. This information is subject to change. The part numbers that TE has identified as EU RoHS compliant have a maximum concentration of 0.1% by weight in homogenous materials for lead, hexavalent chromium, mercury, PBB, PBDE, DBP, BBP, DEHP, DIBP, and 0.01% for cadmium, or qualify for an exemption to these limits as defined in the Annexes of Directive 2011/65/EU (RoHS2). Finished electrical and electronic equipment products will be CE marked as required by Directive 2011/65/EU. Components may not be CE marked. Additionally, the part numbers that TE has identified as EU ELV compliant have a maximum concentration of 0.1% by weight in homogenous materials for lead, hexavalent chromium, and mercury, and 0.01% for cadmium, or qualify for an exemption to these limits as defined in the Annexes of Directive 2000/53/EC (ELV). Regarding the REACH Regulation, the information TE provides on SVHC in articles for this part number is based on the latest European Chemicals Agency (ECHA) 'Guidance on requirements for substances in articles' posted at this URL: <https://echa.europa.eu/guidance-documents/guidance-on-reach>

Also in the Series | [Micro-MaTch Value Line](#)



Board-In Connectors(1)



Ribbon Cable Connectors(4)

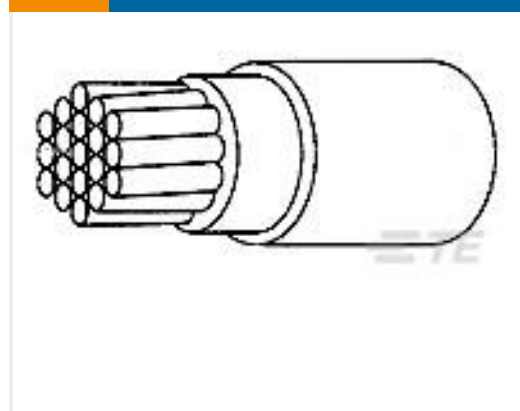
Customers Also Bought



TE Part #1-640445-8
18P MTA156 HDR ASSY FL/STR SN



TE Part #6-1624113-0
3650 2A 0.43uH 5% 2K RL



TE Part #3368913001
100G0111-3.00-0



TE Part #2-1614883-9
CPF 0805 18R 0.1% 25PPM 5K RL



TE Part #9-1614890-2
CPF 0805 53R6 0.1% 25PPM 1K RL



TE Part #102976-2
02 MODII HDR SRST B/A .100CL



TE Part #3-102973-0
60 MODII HDR DRST B/A .100CL

Documents

Product Drawings

CA 150MM 16 POS. MOW-MOW M-M VALUE LINE

English

Product Environmental Compliance

Product Compliance

English

Product Compliance

English