

2177059-1 ✓ ACTIVE

AMP+ HVP800

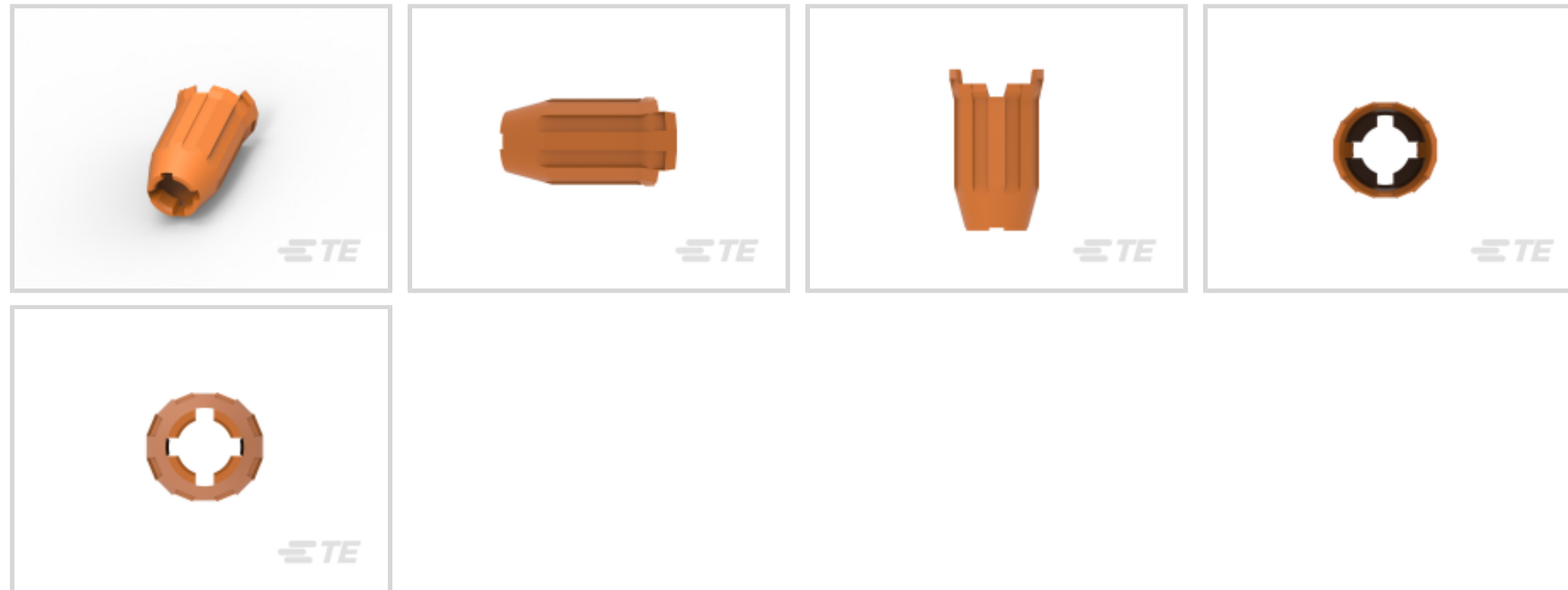
TE Internal #: 2177059-1

Automotive Connector Caps & Covers, Cover, Cable Exit Angle 180°, Orange, PA GF, -40 – 284 °F [-40 – 140 °C], AMP+ HVP800

[View on TE.com >](#)



Connectors > Automotive Connectors > Automotive Connector Accessories > Automotive Connector Caps & Covers



Protection & Strain Relief Accessory Type: **Cover**

Cable Exit Angle: **180°**

Strain Relief: **Without**

Primary Product Color: **Orange**

Primary Product Material: **PA GF**

Features

Product Type Features

Protection & Strain Relief Accessory Type	Cover
---	-------

Body Features

Cable Exit Angle	180°
------------------	------

Primary Product Color	Orange
-----------------------	--------

Primary Product Material	PA GF
--------------------------	-------

Mechanical Attachment

Strain Relief	Without
---------------	---------

Usage Conditions

Operating Temperature (Max)	70 °C, 75 °C, 80 °C, 85 °C, 90 °C, 100 °C, 105 °C, 110 °C, 120 °C, 125 °C, 130 °C, 140 °C [158 °F][167 °F][176 °F][185 °F][194 °F][212 °F][221 °F][230 °F][248 °F][257 °F][266 °F][284 °F]
-----------------------------	--

Operating Temperature Range	-40 – 140 °C [-40 – 284 °F]
-----------------------------	-----------------------------

Industry Standards



UL Flammability Rating	UL 94HB
------------------------	---------

Packaging Features

Packaging Quantity	1000
Packaging Method	Box

Other

Serviceable	No
-------------	----

Product Compliance

[For compliance documentation, visit the product page on TE.com>](#)

EU RoHS Directive 2011/65/EU	Compliant
EU ELV Directive 2000/53/EC	Compliant
China RoHS 2 Directive MIIT Order No 32, 2016	No Restricted Materials Above Threshold
EU REACH Regulation (EC) No. 1907/2006	Current ECHA Candidate List: JUNE 2023 (235) Candidate List Declared Against: JUNE 2023 (235) Does not contain REACH SVHC
Halogen Content	Low Halogen - Br, Cl, F, I < 900 ppm per homogenous material. Also BFR/CFR/PVC Free
Solder Process Capability	Not reviewed for solder process capability

Product Compliance Disclaimer

This information is provided based on reasonable inquiry of our suppliers and represents our current actual knowledge based on the information they provided. This information is subject to change. The part numbers that TE has identified as EU RoHS compliant have a maximum concentration of 0.1% by weight in homogenous materials for lead, hexavalent chromium, mercury, PBB, PBDE, DBP, BBP, DEHP, DIBP, and 0.01% for cadmium, or qualify for an exemption to these limits as defined in the Annexes of Directive 2011/65/EU (RoHS2). Finished electrical and electronic equipment products will be CE marked as required by Directive 2011/65/EU. Components may not be CE marked. Additionally, the part numbers that TE has identified as EU ELV compliant have a maximum concentration of 0.1% by weight in homogenous materials for lead, hexavalent chromium, and mercury, and 0.01% for cadmium, or qualify for an exemption to these limits as defined in the Annexes of Directive 2000/53/EC (ELV). Regarding the REACH Regulation, the information TE provides on SVHC in articles for this part number is based on the latest European Chemicals Agency (ECHA) 'Guidance on requirements for substances in articles' posted at this URL: <https://echa.europa.eu/guidance-documents/guidance-on-reach>

Compatible Parts



 <p>TE Part # 1-2177053-3 2POS,8MM HV,PLUG HSG,ASSY, SEALED</p>	 <p>TE Part # 1-2177053-2 2POS,8MM HV,PLUG HSG,ASSY, SEALED</p>	 <p>TE Part # 1-2177053-1 2POS,8MM HV,PLUG HSG,ASSY, SEALED</p>	 <p>TE Part # 1-2177053-4 2POS,8MM HV,PLUG HSG,ASSY, SEALED</p>
 <p>TE Part # 1-2286917-1 3POS,HVP800,180 DEG,50 SQMM, COD A,CS</p>	 <p>TE Part # 1-2286917-3 3POS,HVP800,180 DEG,50 SQMM, COD A,CS</p>	 <p>TE Part # 1-2286917-5 3POS,HVP800,180 DEG,50 SQMM, COD A,CS</p>	 <p>TE Part # 1-2286932-1 3POS,HVP800,180 DEG,35 SQMM, COD A,CS</p>
 <p>TE Part # 1-2286932-3 3POS,HVP800,180 DEG,35 SQMM, COD A,CS</p>	 <p>TE Part # 1-2286932-5 3POS,HVP800,180 DEG,35 SQMM, COD A,CS</p>	 <p>TE Part # 1-2286935-1 3POS,HVP800,180 DEG,25 SQMM, COD A,CS</p>	 <p>TE Part # 1-2286935-3 3POS,HVP800,180 DEG,25 SQMM, COD A,CS</p>
 <p>TE Part # 1-2286935-5 3POS,HVP800,180 DEG,25 SQMM, COD A,CS</p>	 <p>TE Part # 1-2286937-1 2POS,HVP800,180 DEG,50 SQMM, COD A,CS</p>	 <p>TE Part # 1-2286937-3 2POS,HVP800,180 DEG,50 SQMM, COD A,CS</p>	 <p>TE Part # 1-2286937-5 2POS,HVP800,180 DEG,50 SQMM, COD A,CS</p>
 <p>TE Part # 1-2286937-6 2POS,HVP800,180 DEG,50 SQMM, COD A,CS</p>	 <p>TE Part # 1-2286938-1 2POS,HVP800,180 DEG,35 SQMM, COD A,CS</p>	 <p>TE Part # 1-2286938-3 2POS,HVP800,180 DEG,35 SQMM, COD A,CS</p>	 <p>TE Part # 1-2286938-5 2POS,HVP800,180 DEG,35 SQMM, COD A,CS</p>

Also in the Series | **AMP+ HVP800**



Automotive Connector Caps & Covers (11)



Automotive Connector EMC Shielding (10)



Automotive Connector Locks & Position Assurance(1)



Automotive Housings(56)



Automotive Terminals(6)



Connector Seals & Cavity Plugs(5)



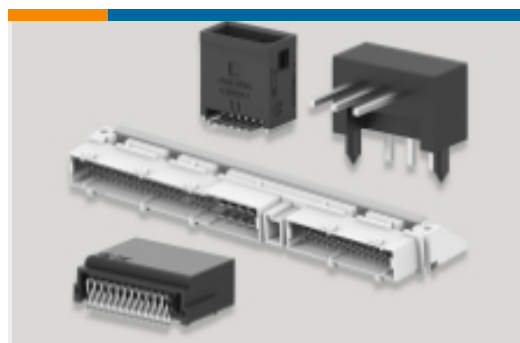
Electric, Hybrid & Fuel Cell Cable Assemblies(10)



High Voltage Wire Processing Equipment(25)



Other Automotive Connector Accessories(1)



PCB Headers & Receptacles(44)

Customers Also Bought



TE Part #1587977-2
INNER HOUSING, PLUG, HVA280-2PHM, PASS T



TE Part #1-1991225-4
PROTECTIVE COVER. IPT 16-50mm sq. CABLE D



TE Part #1-2177063-2
3POS,8MM HV,PLUG HSG,ASSY, SEALED



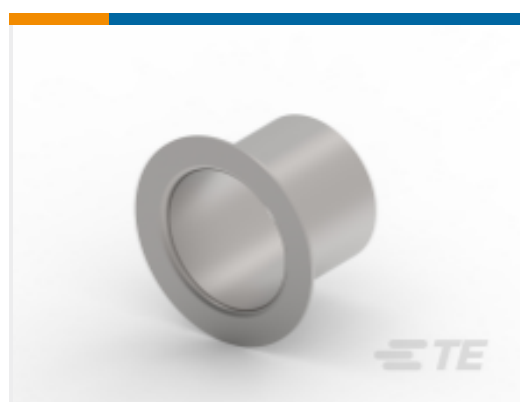
TE Part #2103414-1
SHIPPING CAP TYPE 1, PLUG, HVA280



TE Part #2177061-2
SHIELD CRIMP FERRULE,180DEG



TE Part #2208608-3
8MM HV, CONTACT,ASSY



TE Part #2355148-1
SLEEVE,IPT 3P SHIELDING



TE Part #2355150-2
SLEEVE,IPT 3P SHIELDING



Documents

Product Drawings

[PROTECTION CAP,180DEG](#)

English

CAD Files

[3D PDF](#)

3D

Customer View Model

[ENG_CVM_CVM_2177059-1_A.2d_dxf.zip](#)

English

Customer View Model

[ENG_CVM_CVM_2177059-1_A.3d_igs.zip](#)

English

Customer View Model

[ENG_CVM_CVM_2177059-1_A.3d_stp.zip](#)

English

By downloading the CAD file I accept and agree to the [Terms and Conditions](#) of use.

Product Specifications

[Application Specification](#)

English