



HVA 280

TE Internal #: 2103154-1

Single Wire Seal (SWS), Silicone, Yellow, .421 – .449 in [10.7 – 11.4 mm] Insulation Diameter, HVA 280

[View on TE.com >](#)

Connectors > Connector Accessories > Connector Seals & Cavity Plugs



Connector Seal & Plug Type: **Single Wire Seal (SWS)**

Primary Product Material: **Silicone**

Primary Product Color: **Yellow**

Compatible Insulation Diameter Range: **10.7 – 11.4 mm [.421 – .449 in]**

Resistance to Hydrocarbons: **Poor**

Features

Product Type Features

Connector Seal & Plug Type	Single Wire Seal (SWS)
----------------------------	------------------------

Body Features

Primary Product Material	Silicone
Primary Product Color	Yellow

Dimensions

Compatible Insulation Diameter Range	10.7 – 11.4 mm [.421 – .449 in]
--------------------------------------	---------------------------------

Usage Conditions

Operating Temperature (Max)	65 °C, 70 °C, 75 °C, 80 °C, 85 °C, 90 °C, 100 °C, 105 °C, 110 °C, 120 °C, 125 °C, 130 °C [149 °F][158 °F][167 °F][176 °F][185 °F][194 °F][212 °F][221 °F][230 °F][248 °F][257 °F][266 °F]
Operating Temperature Range	-40 – 130 °C[-40 – 266 °F]

Industry Standards

UL Flammability Rating	None
------------------------	------

Other

Resistance to Hydrocarbons	Poor
Shore A Hardness	30
Contains Lubricant	Yes



Product Compliance

For compliance documentation, visit the product page on TE.com>

EU RoHS Directive 2011/65/EU	Compliant
EU ELV Directive 2000/53/EC	Compliant
China RoHS 2 Directive MIIT Order No 32, 2016	No Restricted Materials Above Threshold
EU REACH Regulation (EC) No. 1907/2006	Current ECHA Candidate List: JUNE 2023 (235) Candidate List Declared Against: JUNE 2023 (235) Does not contain REACH SVHC
Halogen Content	Low Halogen - Br, Cl, F, I < 900 ppm per homogenous material. Also BFR/CFR/PVC Free
Solder Process Capability	Not reviewed for solder process capability

Product Compliance Disclaimer

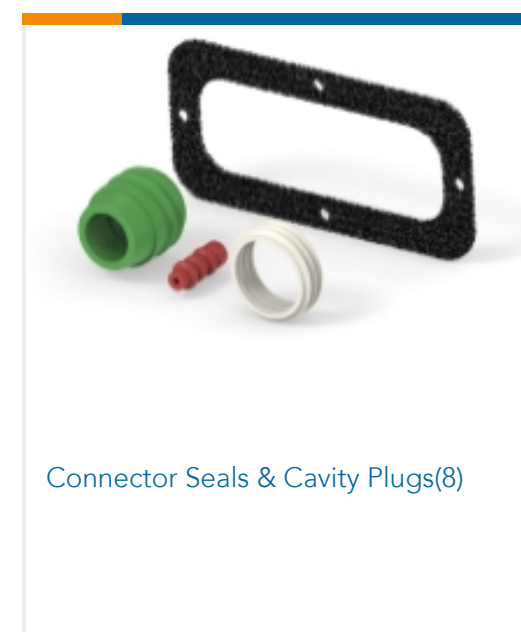
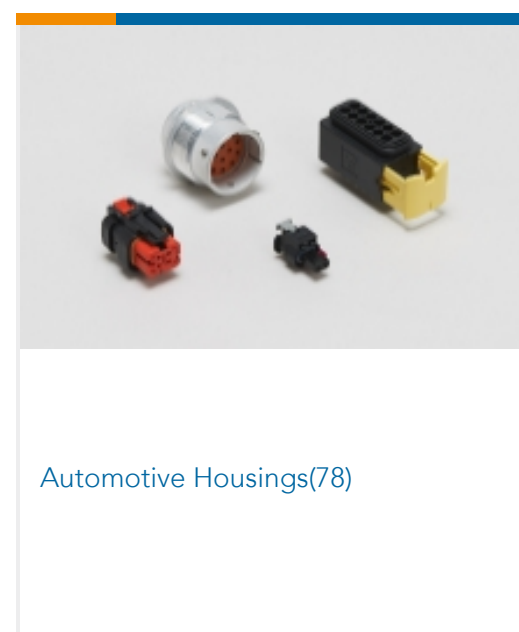
This information is provided based on reasonable inquiry of our suppliers and represents our current actual knowledge based on the information they provided. This information is subject to change. The part numbers that TE has identified as EU RoHS compliant have a maximum concentration of 0.1% by weight in homogenous materials for lead, hexavalent chromium, mercury, PBB, PBDE, DBP, BBP, DEHP, DIBP, and 0.01% for cadmium, or qualify for an exemption to these limits as defined in the Annexes of Directive 2011/65/EU (RoHS2). Finished electrical and electronic equipment products will be CE marked as required by Directive 2011/65/EU. Components may not be CE marked. Additionally, the part numbers that TE has identified as EU ELV compliant have a maximum concentration of 0.1% by weight in homogenous materials for lead, hexavalent chromium, and mercury, and 0.01% for cadmium, or qualify for an exemption to these limits as defined in the Annexes of Directive 2000/53/EC (ELV). Regarding the REACH Regulation, the information TE provides on SVHC in articles for this part number is based on the latest European Chemicals Agency (ECHA) 'Guidance on requirements for substances in articles' posted at this URL: <https://echa.europa.eu/guidance-documents/guidance-on-reach>

Compatible Parts

 <p>TE Part # 2103534-1 PLUG SUBASSY, A, HVA280</p>	 <p>TE Part # 1-2208103-3 2POS,HVA,2 PHM,SHUNTED,HYB ASSY</p>	 <p>TE Part # 4-2103015-5 PLUG SUBASSY, E, HVA280-2PHM F</p>	 <p>TE Part # 4-2103015-2 PLUG SUBASSY, B, HVA280-2PHM F</p>
--------------------------------------------------------------------------------------------------------------------------------------------	------------------------------------------------------------------------------------------------------------------------------------------------------	-------------------------------------------------------------------------------------------------------------------------------------------------------	-------------------------------------------------------------------------------------------------------------------------------------------------------



Also in the Series | **HVA 280**





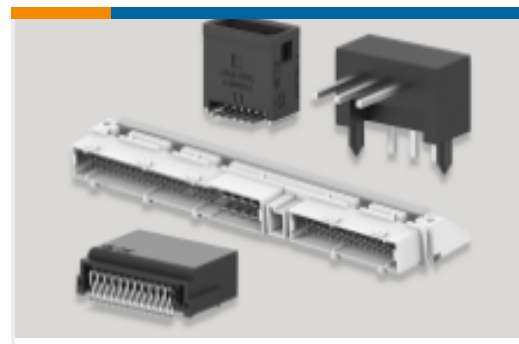
Electric, Hybrid & Fuel Cell Cable Assemblies(6)



High Voltage Wire Processing Equipment(7)



Other Automotive Connector Accessories(37)



PCB Headers & Receptacles(37)

Customers Also Bought



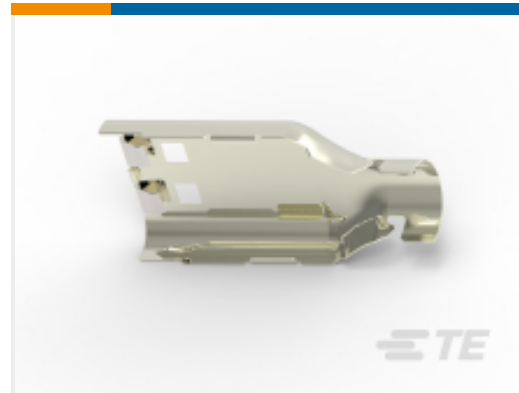
TE Part #1418917-1
MULTI CORE CABLE ADAPTER 180 DEGREE



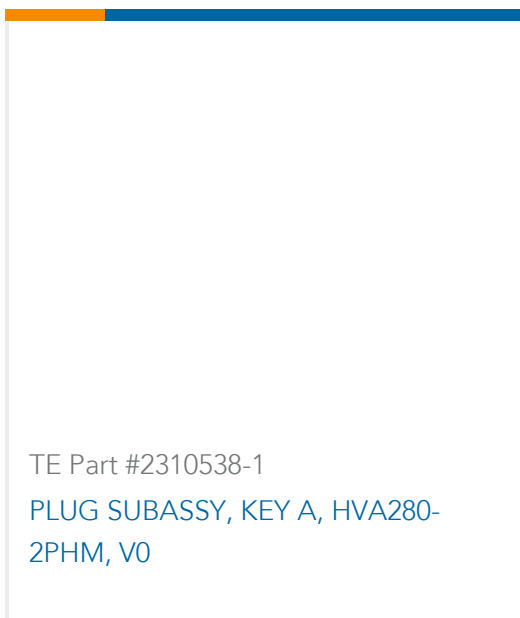
TE Part #4-2103015-5
PLUG SUBASSY, E, HVA280-2PHM F



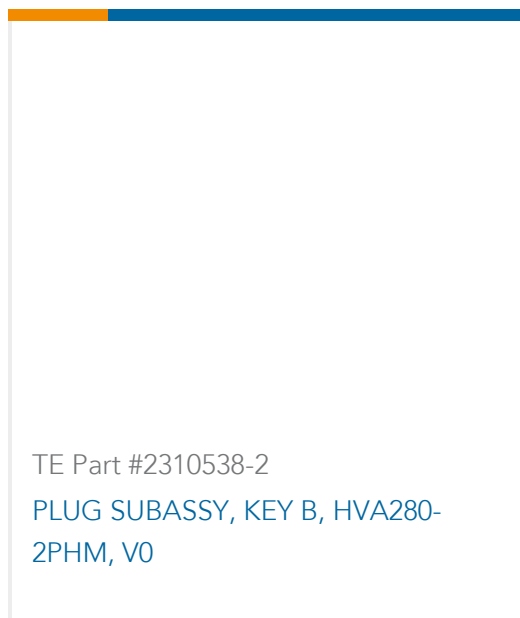
TE Part #4-2103015-4
PLUG SUBASSY, D, HVA280-2PHM F



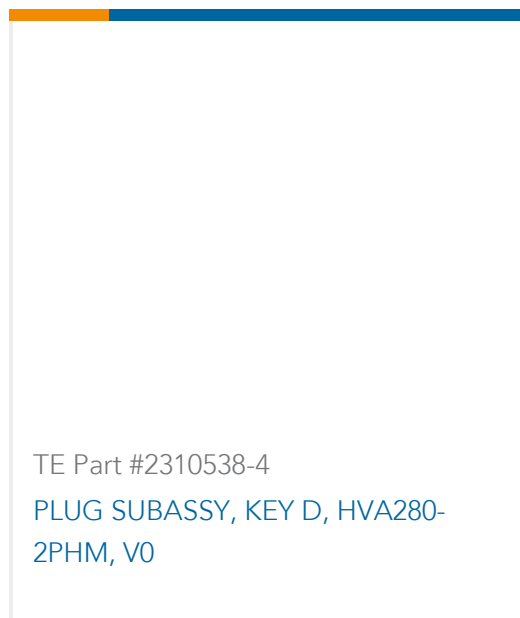
TE Part #1-2103157-1
SHIELD, PLUG, SIZE 1, Ag, HVA280



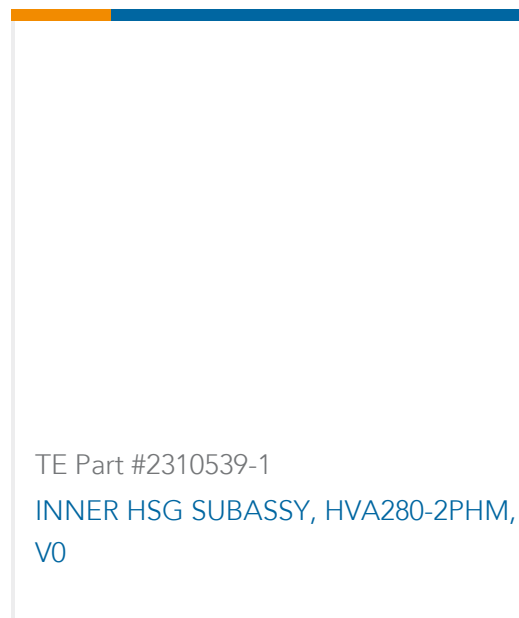
TE Part #2310538-1
PLUG SUBASSY, KEY A, HVA280-2PHM, V0



TE Part #2310538-2
PLUG SUBASSY, KEY B, HVA280-2PHM, V0



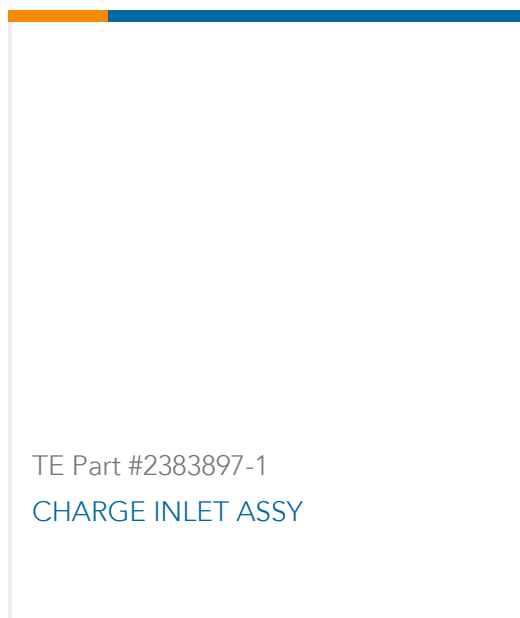
TE Part #2310538-4
PLUG SUBASSY, KEY D, HVA280-2PHM, V0



TE Part #2310539-1
INNER HSG SUBASSY, HVA280-2PHM, V0



TE Part #2328075-3
8MM HV, TERMINAL, HEX CRIMP, 180DEG, 50 SQMM



TE Part #2383897-1
CHARGE INLET ASSY

Documents

Product Drawings

[CABLE SEAL, SIZE 1, HVA280](#)

English

[CABLE SEAL, SIZE 1, HVA280](#)

English

CAD Files

[3D PDF](#)

[3D](#)



Customer View Model

[ENG_CVM_CVM_2103154-1_A_c-2103154-1-a.2d_dxf.zip](#)

English

Customer View Model

[ENG_CVM_CVM_2103154-1_A_c-2103154-1-a.3d_igs.zip](#)

English

Customer View Model

[ENG_CVM_CVM_2103154-1_A_c-2103154-1-a.3d_stp.zip](#)

English

By downloading the CAD file I accept and agree to the [Terms and Conditions](#) of use.

Product Specifications

[Application Specification](#)

English

[Application Specification](#)

English

[Application Specification](#)

English

[Application Specification](#)

English