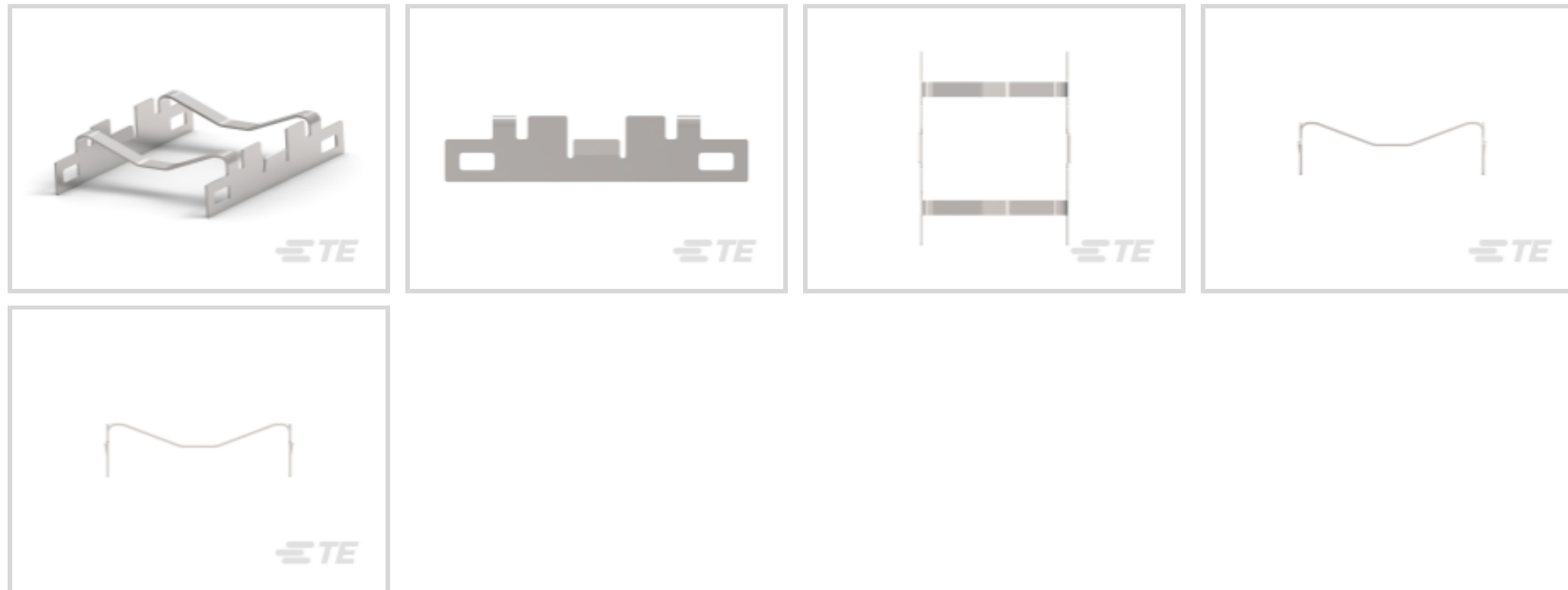




Connectors > Socket Connectors > IC & Component Socket Accessories > Heat Sinks



Device Type: **QSFP**

Power Rating: **5 W, 10 W, 15 W**

Features

Product Type Features

Device Type	QSFP
-------------	------

Electrical Characteristics

Power Rating	5 W, 10 W, 15 W
--------------	-----------------

Body Features

Primary Product Material	Stainless Steel
--------------------------	-----------------

Product Compliance

[For compliance documentation, visit the product page on TE.com>](#)

EU RoHS Directive 2011/65/EU	Compliant
EU ELV Directive 2000/53/EC	Compliant
China RoHS 2 Directive MIIT Order No 32, 2016	No Restricted Materials Above Threshold
EU REACH Regulation (EC) No. 1907/2006	Current ECHA Candidate List: JUNE 2023 (235) Candidate List Declared Against: JUNE 2023 (235) Does not contain REACH SVHC
Halogen Content	Low Halogen - Br, Cl, F, I < 900 ppm per homogenous material. Also BFR/CFR/PVC Free
Solder Process Capability	Not applicable for solder process capability



Product Compliance Disclaimer

This information is provided based on reasonable inquiry of our suppliers and represents our current actual knowledge based on the information they provided. This information is subject to change. The part numbers that TE has identified as EU RoHS compliant have a maximum concentration of 0.1% by weight in homogenous materials for lead, hexavalent chromium, mercury, PBB, PBDE, DBP, BBP, DEHP, DIBP, and 0.01% for cadmium, or qualify for an exemption to these limits as defined in the Annexes of Directive 2011/65/EU (RoHS2). Finished electrical and electronic equipment products will be CE marked as required by Directive 2011/65/EU. Components may not be CE marked. Additionally, the part numbers that TE has identified as EU ELV compliant have a maximum concentration of 0.1% by weight in homogenous materials for lead, hexavalent chromium, and mercury, and 0.01% for cadmium, or qualify for an exemption to these limits as defined in the Annexes of Directive 2000/53/EC (ELV). Regarding the REACH Regulation, the information TE provides on SVHC in articles for this part number is based on the latest European Chemicals Agency (ECHA) 'Guidance on requirements for substances in articles' posted at this URL: <https://echa.europa.eu/guidance-documents/guidance-on-reach>

Compatible Parts



TE Part # CAT-C11-H50114
QSFP to QSFP I/O Cable Assembly: 30 AWG



TE Part # CAT-C11-H50111
QSFP-Four SFP+ I/O Cable Assembly 30 AWG



TE Part # 1888810-2
EMI/Dust Cover,XFP And QSFP



TE Part # 2110819-1
QSFP+ Enh EVERCLEAR PT Conn



TE Part # 1888674-1
Cage Assy, QSFP, Through Bezel



TE Part # CAT-C11-H5011
QSFP-Four SFP+ I/O Cable Assembly 28 AWG



TE Part # CAT-C11-H501142
QSFP to QSFP I/O Cable Assembly: 33 AWG



TE Part # 2053638-4
C/A, QSFP, 4M, P1-P2, UNEQUALIZED

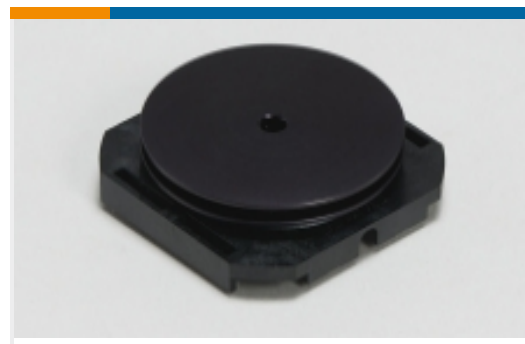


TE Part # 2202165-4
QSFP TO QSFP, 26AWG, FDR, 4.0 METER



TE Part # 2202165-5
QSFP TO QSFP, 26AWG, FDR, 5.0 METER

Also in the Series | QSFP/QSFP+



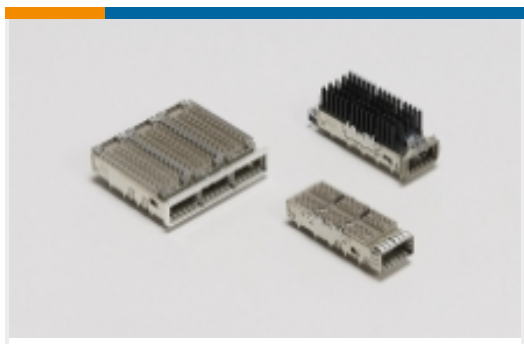
Heat Sinks(1)



Light Pipes(8)



Pluggable I/O Cable Assemblies(23)



QSFP, QSFP+ & zQSFP+(158)

Customers Also Bought



TE Part #1489951-1
XFP CAGE ASSEMBLY



TE Part #1888617-1
Cage Assy, QSFP, Through Bezel



TE Part #2170704-5
CAGE ASSY, QSFP28 1X1, SPRING, HS



TE Part #2198235-3
SFP+ Enhanced 1x6, Networking Heatsink



TE Part #1645570-1
12 ROW HM RA REC ASY 072P RGHT



TE Part #1542656-4
XFP.MSA PCI APPLICATION HEATSI



TE Part #1645680-1
ZP HS3 DB 06R REC 030P RE PD



TE Part #2304774-2
EMI/DUST COVER,XFP AND QSFP

Documents

CAD Files

3D PDF

3D

Customer View Model

[ENG_CVM_CVM_2007304-1_A.2d_dxf.zip](#)

English

Customer View Model

[ENG_CVM_CVM_2007304-1_A.3d_igs.zip](#)

English

Customer View Model

[ENG_CVM_CVM_2007304-1_A.3d_stp.zip](#)

English

By downloading the CAD file I accept and agree to the [Terms and Conditions](#) of use.

Product Specifications

[Application Specification](#)

English



Product Environmental Compliance

[MD_2007304-1_03302017248_dmtec](#)

English

[MD_2007304-1_03302017248_dmtec](#)

English