

1SNK712065R0000 ✓ ACTIVE

ENTRELEC | ENTRELEC SNK

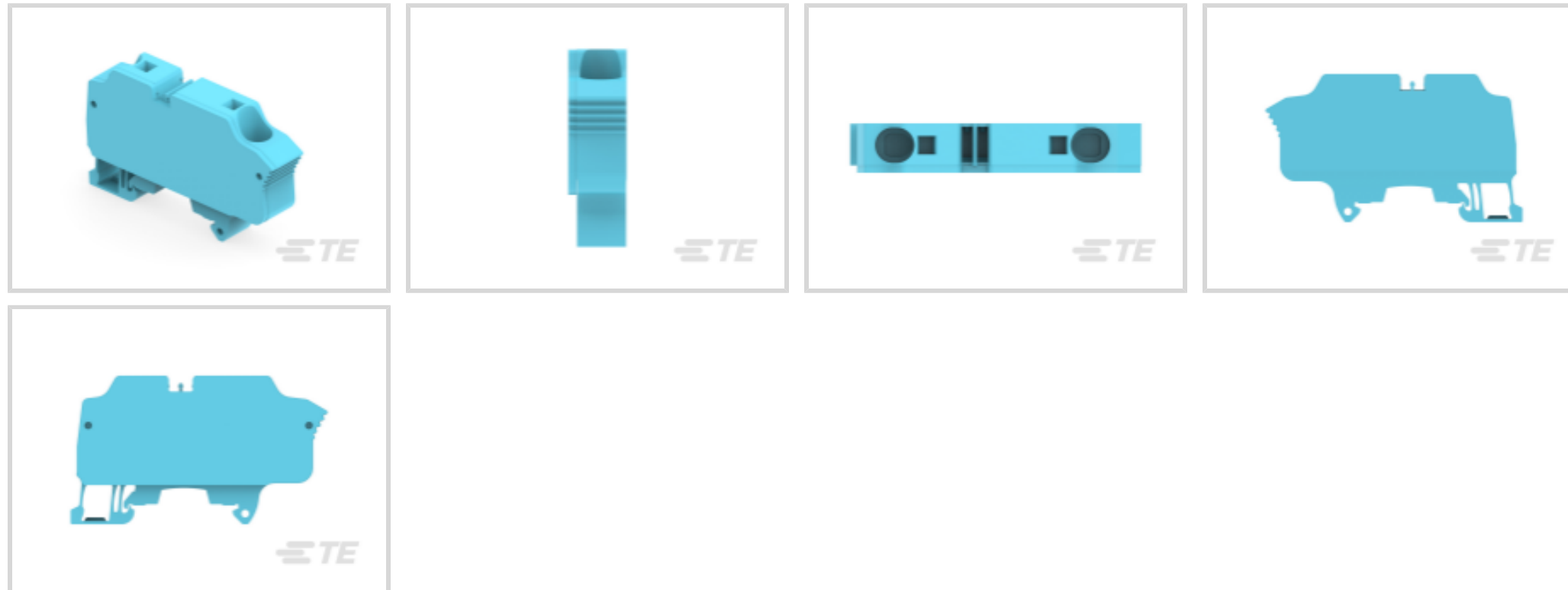
TE Internal #: 1SNK712065R0000

Modular Terminal Blocks, Feed-Through, PI-Spring Terminal Block, Blue & Gray, Product Spacing .551 in [14 mm], 2 Position, DIN Rail, ENTRELEC SNK

[View on TE.com >](#)



Connectors > Terminal Blocks & Strips > Modular Terminal Blocks



Block Function: **Feed-Through**

Modular Terminal Block Product Type: **PI-Spring Terminal Block**

Primary Product Color: **Blue & Gray**

Product Spacing: **14 mm [ .551 in ]**

Number of Positions: **2**

## Features

### Product Type Features

|                                     |                          |
|-------------------------------------|--------------------------|
| Modular Terminal Block Product Type | PI-Spring Terminal Block |
|-------------------------------------|--------------------------|

### Configuration Features

|                     |                  |
|---------------------|------------------|
| Gauge Type          | A7 & 6.3 mm Dia. |
| Number of Levels    | 1                |
| Block Function      | Feed-Through     |
| Number of Positions | 2                |

### Electrical Characteristics

|  |        |
|--|--------|
| Operating Voltage Rating (UL & CSA) (Max) - Main Circuit | 1000 V |
| Impulse Withstanding Voltage Rating (IEC)                | 8000 V |
| Current Rating (CSA)                                     | 75 A   |
| Power Loss   | 2.4 W  |
| Dielectric Withstanding Voltage (Max)                    | 2200 V |
| Short-Time Withstanding Current Rating @ 1s              | 1920 A |
| Current Rating (UL)                                      | 75 A   |

|                      |      |
|----------------------|------|
| Current Rating (IEC) | 76 A |
|----------------------|------|

### Body Features

|                       |                   |
|-----------------------|-------------------|
| Product Weight        | 36.56 g[1.439 oz] |
| Primary Product Color | Blue & Gray       |

### Mechanical Attachment

|                         |                   |
|-------------------------|-------------------|
| DIN Rail Mounting Type  | TH35-15, TH35-7.5 |
| Connector Mounting Type | DIN Rail          |

### Housing Features

|                  |           |
|------------------|-----------|
| Housing Material | Polyamide |
|------------------|-----------|

### Dimensions

|   |                         |
|---|-------------------------|
| Main Circuit Capacity - 1 Rigid Stranded Conductor per Spring Clamp | .5 – 25 mm <sup>2</sup> |
| Main Circuit Capacity - Twin Ferrule per Spring Clamp               | .5 – 6 mm <sup>2</sup>  |
| Wire Stripping Length   | 15 mm[.591 in]          |
| Main Circuit Capacity - 1 Non-Insulated Ferrule per Spring Clamp    | .5 – 16 mm <sup>2</sup> |
| Main Circuit Capacity - 1 Insulated Ferrule per Spring Clamp        | 20 – 6 AWG              |
| Main Circuit Capacity - 1 Flexible Conductor per Spring Clamp       | .5 – 16 mm <sup>2</sup> |
| Tool Size   | 4 mm[.157 in]           |
| Product Depth   | 82.5 mm                 |
| Product Length  | 82.5 mm[3.25 in]        |
| Product Height  | 47.5 mm                 |
| Product Spacing   | 14 mm[.551 in]          |

### Usage Conditions

|                                |                            |
|--------------------------------|----------------------------|
| Installation Temperature Range | -5 – 40 °C[23 – 104 °F]    |
| Operating Temperature Range    | -55 – 110 °C[-67 – 230 °F] |

### Industry Standards

|                        |          |
|------------------------|----------|
| IP Rating              | IP20     |
| UL Flammability Rating | UL 94V-0 |

### Product Compliance

For compliance documentation, visit the product page on [TE.com](https://www.te.com)>

|                              |           |
|------------------------------|-----------|
| EU RoHS Directive 2011/65/EU | Compliant |
|------------------------------|-----------|



|   |   |
|---|---|
| EU ELV Directive 2000/53/EC                   | Compliant   |
| China RoHS 2 Directive MIIT Order No 32, 2016 | No Restricted Materials Above Threshold   |
| EU REACH Regulation (EC) No. 1907/2006        | Current ECHA Candidate List: JUNE 2023 (235)<br>Candidate List Declared Against: JUNE 2023 (235)<br>Does not contain REACH SVHC |
| Halogen Content                               | Low Halogen - Br, Cl, F, I < 900 ppm per homogenous material. Also BFR/CFR/PVC Free   |
| Solder Process Capability                     | Not reviewed for solder process capability  |

Product Compliance Disclaimer

This information is provided based on reasonable inquiry of our suppliers and represents our current actual knowledge based on the information they provided. This information is subject to change. The part numbers that TE has identified as EU RoHS compliant have a maximum concentration of 0.1% by weight in homogenous materials for lead, hexavalent chromium, mercury, PBB, PBDE, DBP, BBP, DEHP, DIBP, and 0.01% for cadmium, or qualify for an exemption to these limits as defined in the Annexes of Directive 2011/65/EU (RoHS2). Finished electrical and electronic equipment products will be CE marked as required by Directive 2011/65/EU. Components may not be CE marked. Additionally, the part numbers that TE has identified as EU ELV compliant have a maximum concentration of 0.1% by weight in homogenous materials for lead, hexavalent chromium, and mercury, and 0.01% for cadmium, or qualify for an exemption to these limits as defined in the Annexes of Directive 2000/53/EC (ELV). Regarding the REACH Regulation, the information TE provides on SVHC in articles for this part number is based on the latest European Chemicals Agency (ECHA) 'Guidance on requirements for substances in articles' posted at this URL: <https://echa.europa.eu/guidance-documents/guidance-on-reach>

## Compatible Parts

TE Part # 1SNK900002R0000  
BAZ1

TE Part # 1SNK900107R0000  
CS-R3

TE Part # 1SNK900203R0000  
TP2

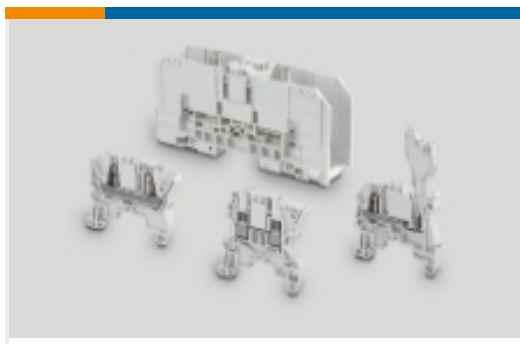
TE Part # 1SNK160000R0000  
MC812

TE Part # 1SNK169999R0000  
MC812PA

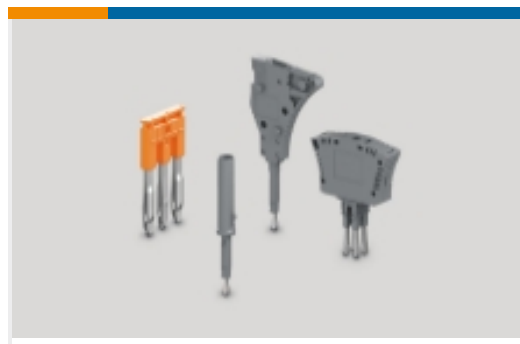
TE Part # 1SNK900205R0000  
TP4

TE Part # 1SNK900611R0000  
UMH

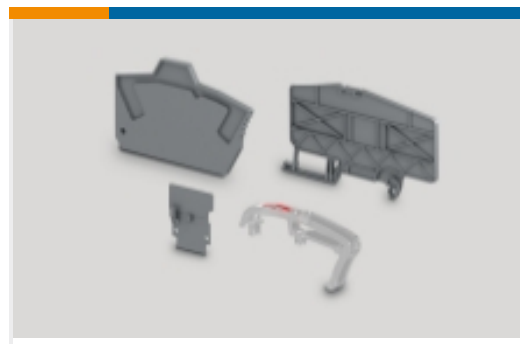
Also in the Series | **ENTRELEC SNK**



Modular Terminal Blocks(320)



Terminal Block & Strip Conducting Accessories(67)



Terminal Block & Strip Insulating Accessories(31)

## Customers Also Bought



TE Part #1SNK705061R0000  
ZK2.5-GN



TE Part #DT06-08SC  
PLG, 8P, GRN, N, C



TE Part #1SNK506021R0000  
ZS6-3S-BL



TE Part #1SNK705910R0000  
EK2.5



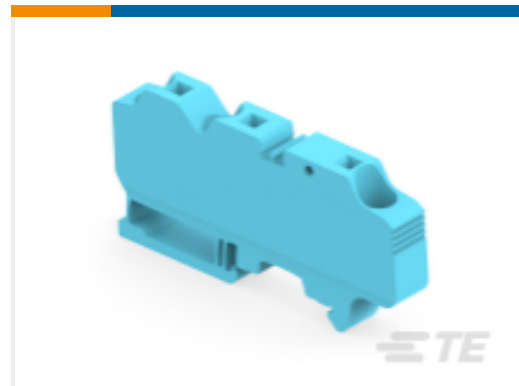
TE Part #1SNK706010R0000  
ZK4



TE Part #1SNK706062R0000  
ZK4-RD



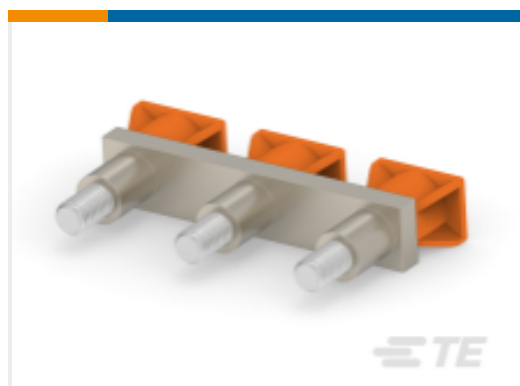
TE Part #1SNK706066R0000  
ZK4-BK



TE Part #1SNK712067R0000  
ZK16-3P-PV-BL



TE Part #1SNK906350R0000  
JB6-50



TE Part #1SNK916303R0000  
JB16-3

## Documents

### CAD Files

Customer View Model

[ENG\\_CVM\\_CVM\\_1SNK712065R0000\\_A2.3d\\_igs.zip](#)

English

Customer View Model

[ENG\\_CVM\\_CVM\\_1SNK712065R0000\\_A2.3d\\_stp.zip](#)

English

Customer View Model

[ENG\\_CVM\\_CVM\\_1SNK712065R0000\\_A2.2d\\_dxf.zip](#)

1SNK712065R0000

Modular Terminal Blocks, Feed-Through, PI-Spring Terminal Block, Blue & Gray,  
Product Spacing .551 in [14 mm], 2 Position, DIN Rail, ENTRELEC SNK



English

[3D PDF](#)

3D

By downloading the CAD file I accept and agree to the [Terms and Conditions](#) of use.

---

### Datasheets & Catalog Pages

[ENTRELEC Terminal Block - Master Catalog](#)

[ENTRELEC Terminal Block - Master Catalog](#)

English

[ZK16-PV-BL](#)

English

[SNK SERIES TERMINAL BLOCKS](#)

English

---

### Agency Approvals

[UL](#)

English