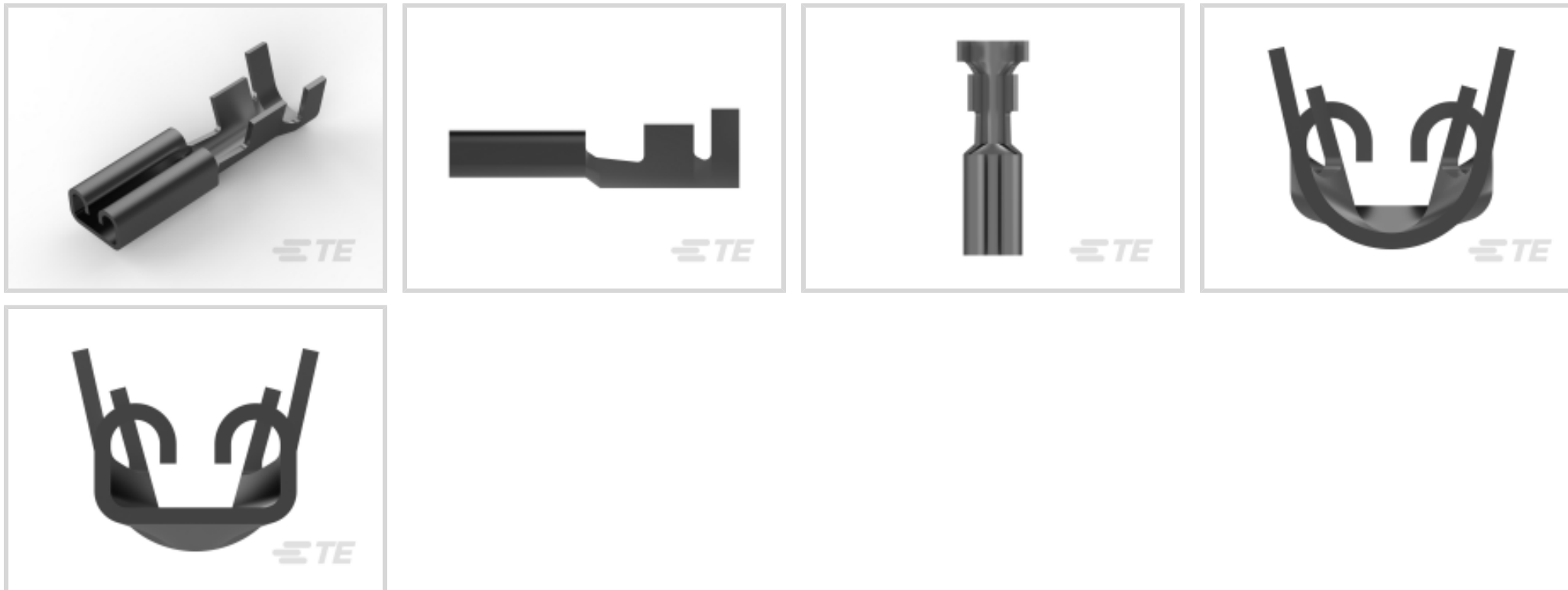




Terminals & Splices > Quick Disconnects



Quick Disconnect Terminal Type: **Receptacle**

Wire Size: .5 – 1.5 mm<sup>2</sup>

Mating Tab Width: 2.8 mm [.11 in]

Mating Tab Thickness: .8 mm [.032 in]

### Features

#### Configuration Features

Connection Capacity	Single
Compatible With Wire & Cable Type	Discrete Wire

#### Contact Features

Quick Disconnect Terminal Type	Receptacle
Mating Tab Width	2.8 mm [.11 in]
Mating Tab Thickness	.8 mm [.032 in]
Terminal Orientation	Straight
Contact Base Material	Brass
Terminal Plating Material	Tin
Crimp Type	F-Crimp
Barrel Type	Open

#### Termination Features

Product Terminates To	Wire & Cable
-----------------------	--------------

#### Mechanical Attachment

--	--



Wire Insulation Support	With
-------------------------	------

Mating Retention Type	Dimple
-----------------------	--------

### Dimensions

Terminal Material Thickness	.3 mm[.012 in]
-----------------------------	----------------

Product Length	13.4 mm[.527 in]
----------------	------------------

Compatible Insulation Diameter Range	1.5 – 2.8 mm[.059 – .11 in]
--------------------------------------	-----------------------------

Wire Size	.5 – 1.5 mm <sup>2</sup>
-----------	--------------------------

### Usage Conditions

Insulation Option	Uninsulated
-------------------	-------------

Operating Temperature Range	-40 – 110 °C[-40 – 230 °F]
-----------------------------	----------------------------

### Industry Standards

Agency/Standard	CSA, UL
-----------------	---------

### Packaging Features

Packaging Quantity	15000
--------------------	-------

Packaging Method	Strip/Reel
------------------	------------

### Product Compliance

[For compliance documentation, visit the product page on TE.com>](#)

EU RoHS Directive 2011/65/EU	Compliant
------------------------------	-----------

EU ELV Directive 2000/53/EC	Compliant
-----------------------------	-----------

China RoHS 2 Directive MIIT Order No 32, 2016	No Restricted Materials Above Threshold
---	---

EU REACH Regulation (EC) No. 1907/2006	Current ECHA Candidate List: JUNE 2023 (235) Candidate List Declared Against: JUNE 2023 (235) Does not contain REACH SVHC
--	---

Halogen Content	Low Halogen - Br, Cl, F, I < 900 ppm per homogenous material. Also BFR/CFR/PVC Free
-----------------	---

Solder Process Capability	Not applicable for solder process capability
---------------------------	--

#### Product Compliance Disclaimer

This information is provided based on reasonable inquiry of our suppliers and represents our current actual knowledge based on the information they provided. This information is subject to change. The part numbers that TE has identified as EU RoHS compliant have a maximum concentration of 0.1% by weight in homogenous materials for lead, hexavalent chromium, mercury, PBB, PBDE, DBP, BBP, DEHP, DIBP, and 0.01% for cadmium, or qualify for an exemption to these limits as defined in the Annexes of Directive 2011/65/EU (RoHS2). Finished electrical and electronic equipment products will be CE marked as required by Directive 2011/65/EU. Components may not be CE marked. Additionally, the part

numbers that TE has identified as EU ELV compliant have a maximum concentration of 0.1% by weight in homogenous materials for lead, hexavalent chromium, and mercury, and 0.01% for cadmium, or qualify for an exemption to these limits as defined in the Annexes of Directive 2000/53/EC (ELV). Regarding the REACH Regulation, the information TE provides on SVHC in articles for this part number is based on the latest European Chemicals Agency (ECHA) 'Guidance on requirements for substances in articles' posted at this URL: <https://echa.europa.eu/guidance-documents/guidance-on-reach>

## Compatible Parts

TE Part # 2-2150457-1  
OCEAN\_2.0\_Applicator-E-080F140F

TE Part # 2-2150457-2  
OCEAN\_2.0\_Applicator-E-080F140F

TE Part # 2150457-1  
OCEAN\_2.0\_Applicator-E-080F140F

TE Part # 2150457-2  
OCEAN\_2.0\_Applicator-E-080F140F

TE Part # 7-2150457-1  
OCEAN\_2.0\_Applicator-E-080F140F

TE Part # 7-2150457-2  
OCEAN\_2.0\_Applicator-E-080F140F

TE Part # 7-2150457-7  
OCEAN\_2.0\_SPARE\_PART\_KIT-080F140F

## Also in the Series | FASTON 110

Crimp Terminal Housings(13)

Insertion & Extraction Tools(1)

PCB Terminals(21)

Quick Disconnects(171)

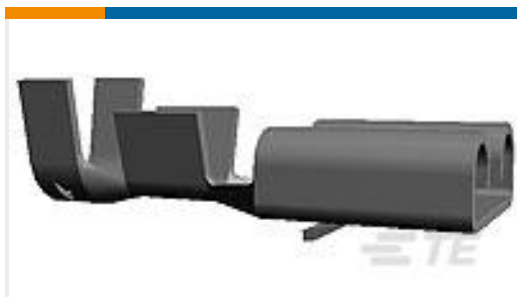
## Customers Also Bought

TE Part #969191-2  
FLA-STE-GEH2,8 8P

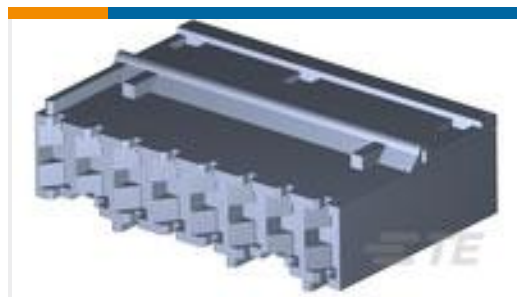
TE Part #735278-1  
ISOL FASTON STECKH

TE Part #160860-3  
6,35 FASTIN-FASTON RECEP

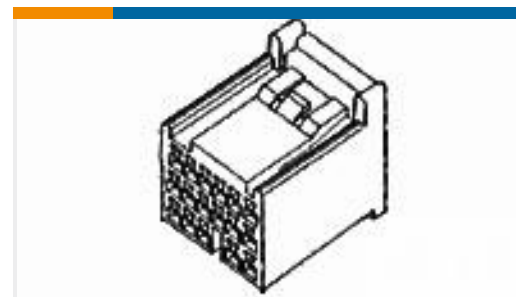
TE Part #160916-4  
250 FASTON,REC.,17-14 AWG,TPPB



TE Part #160917-3  
FF 250 REC 1-2.5MM2 PB



TE Part #3-928343-8  
STD-TIMER GEH 8P



TE Part #353030-1  
040 H/D-3 PLUG HSG ASSY 28P



TE Part #5-154509-4  
250 FASTON HSG. REC 1P BLACK



TE Part #626038-2  
RING TONGUE 4-6 MM2 0.79 X 16.18  
TPBR

## Documents

### Product Drawings

[110 FASTON,REC.,20-16 AWG,TPBR](#)

English

### CAD Files

Customer View Model

[ENG\\_CVM\\_CVM\\_180423-2\\_AG.2d\\_dxf.zip](#)

English

[3D PDF](#)

3D

Customer View Model

[ENG\\_CVM\\_CVM\\_180423-2\\_AG.3d\\_igs.zip](#)

English

Customer View Model

[ENG\\_CVM\\_CVM\\_180423-2\\_AG.3d\\_stp.zip](#)

English

By downloading the CAD file I accept and agree to the [Terms and Conditions](#) of use.

### Datasheets & Catalog Pages

[1654742\\_HOUSEHOLD\\_APPLIANCES\\_RAST5](#)

English

### Product Environmental Compliance

[MD\\_180423-2\\_062520181344\\_dmtec](#)

English

[MD\\_180423-2\\_062520181344\\_dmtec](#)

English

180423-2

Quick Disconnects, Receptacle, 20 – 16 AWG Wire Size, .5 – 1.5 mm<sup>2</sup> Wire Size,  
Mating Tab Width 2.8 mm [.11 in], Straight, Brass, FASTON 110

