

1658945-1 ✓ ACTIVE



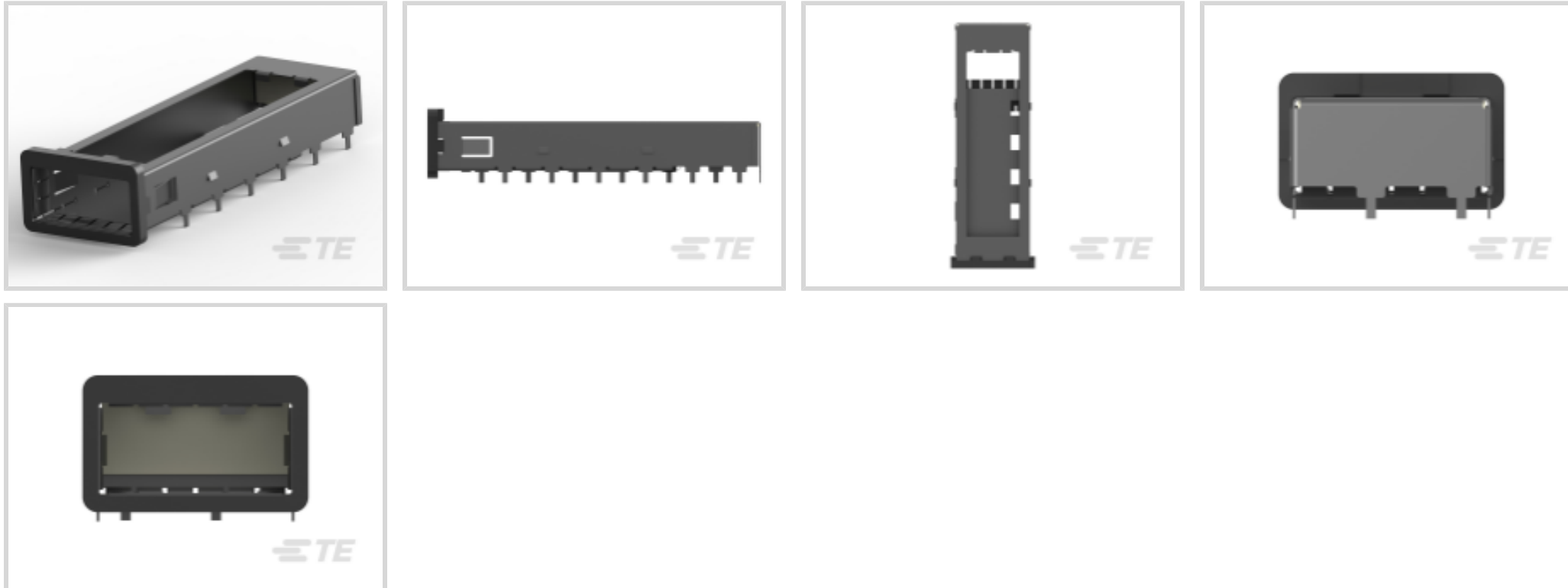
SFP28 | XFP

TE Internal #: 1658945-1

XFP, Cage Assembly, Double-Sided (Belly-to-Belly) Mount, 1 Port, 1 x 1, Data Rate (Max) 10 Gb/s, Cable-to-Board, Printed Circuit Board, XFP

[View on TE.com >](#)

Connectors > Pluggable IO Connectors & Cages > XFP > XFP Cage Assemblies and Kits



Pluggable I/O Product Type: **Cage Assembly**
PCB Mounting Style: **Double-Sided (Belly-to-Belly)**
Number of Ports: **1**
Port Matrix Configuration: **1 x 1**
Data Rate (Max): **10 Gb/s**

[All XFP Cage Assemblies and Kits \(22\)](#)

Features

Product Type Features

Pluggable I/O Accessory Type	Heat Sink
Connector & Housing Type	Receptacle
Form Factor	XFP
Cage Type	Single
Pluggable I/O Product Type	Cage Assembly
Connector System	Cable-to-Board
Sealable	No
Connector & Contact Terminates To	Printed Circuit Board

Configuration Features

Number of Ports	1
Port Matrix Configuration	1 x 1

Electrical Characteristics



Data Rate (Max)	10 Gb/s
-----------------	---------

Body Features

Primary Product Material	Aluminum
--------------------------	----------

Cage Plating Material	Tin
-----------------------	-----

Contact Features

Contact Mating Area Plating Material	Gold
--------------------------------------	------

Termination Features

Termination Post & Tail Length	2.05 mm[.081 in]
--------------------------------	------------------

Termination Method to Printed Circuit Board	Through Hole - Press-Fit
---	--------------------------

Mechanical Attachment

PCB Mounting Style	Double-Sided (Belly-to-Belly)
--------------------	-------------------------------

Connector Mounting Type	Board Mount
-------------------------	-------------

Housing Features

Cage Material	Copper Alloy
---------------	--------------

Housing Material	LCP (Liquid Crystal Polymer)
------------------	------------------------------

Housing Color	Black
---------------	-------

Dimensions

Connector Profile Height	13.29 mm
--------------------------	----------

Product Width	21.7 mm
---------------	---------

Product Length	64.03 mm
----------------	----------

Usage Conditions

Operating Temperature Range	-10 – 70 °C
-----------------------------	-------------

Operation/Application

Heat Sink Application	Yes
-----------------------	-----

Heat Sink Compatible	Yes
----------------------	-----

For Use With Pluggable I/O Products	XFP Connector / XFP Cable Plug
-------------------------------------	--------------------------------

Industry Standards

UL Flammability Rating	UL 94V-0
------------------------	----------

Packaging Features

Packaging Method	Box & Tray, Tray
------------------	------------------

Other



Included Lightpipe	No
--------------------	----

Product Compliance

[For compliance documentation, visit the product page on TE.com>](#)

EU RoHS Directive 2011/65/EU	Compliant
EU ELV Directive 2000/53/EC	Compliant
China RoHS 2 Directive MIIT Order No 32, 2016	No Restricted Materials Above Threshold
EU REACH Regulation (EC) No. 1907/2006	Current ECHA Candidate List: JUNE 2023 (235) Candidate List Declared Against: JUNE 2023 (235) Does not contain REACH SVHC
Halogen Content	Low Halogen - Br, Cl, F, I < 900 ppm per homogenous material. Also BFR/CFR/PVC Free
Solder Process Capability	Not applicable for solder process capability

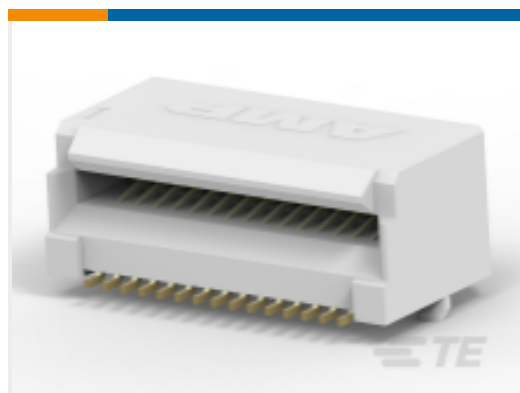
Product Compliance Disclaimer

This information is provided based on reasonable inquiry of our suppliers and represents our current actual knowledge based on the information they provided. This information is subject to change. The part numbers that TE has identified as EU RoHS compliant have a maximum concentration of 0.1% by weight in homogenous materials for lead, hexavalent chromium, mercury, PBB, PBDE, DBP, BBP, DEHP, DIBP, and 0.01% for cadmium, or qualify for an exemption to these limits as defined in the Annexes of Directive 2011/65/EU (RoHS2). Finished electrical and electronic equipment products will be CE marked as required by Directive 2011/65/EU. Components may not be CE marked. Additionally, the part numbers that TE has identified as EU ELV compliant have a maximum concentration of 0.1% by weight in homogenous materials for lead, hexavalent chromium, and mercury, and 0.01% for cadmium, or qualify for an exemption to these limits as defined in the Annexes of Directive 2000/53/EC (ELV). Regarding the REACH Regulation, the information TE provides on SVHC in articles for this part number is based on the latest European Chemicals Agency (ECHA) 'Guidance on requirements for substances in articles' posted at this URL: <https://echa.europa.eu/guidance-documents/guidance-on-reach>

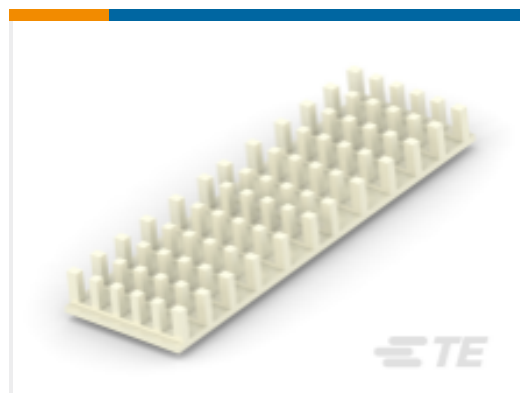
Compatible Parts



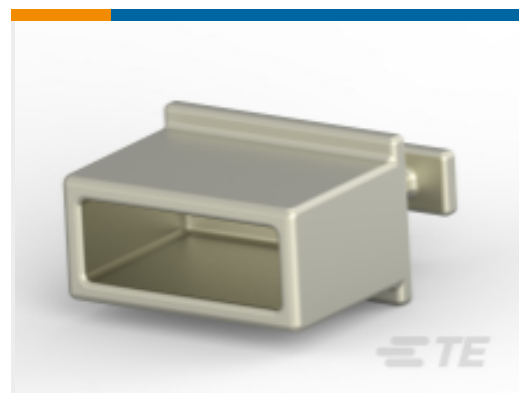
TE Part # CAT-X29-C76264
XFP Connectors



TE Part # 1367500-1
30 POSN XFP CONN, ENHANCED



TE Part # 1542618-2
XFP MSA SAN APPLICATION



TE Part # 1888810-2
EMI/Dust Cover,XFP And QSFP



Also in the Series | XFP



Customers Also Bought





Documents

Product Drawings

[XFP CAGE ASSY w/o ELASTOMERIC GASKET](#)

English

CAD Files

Customer View Model

[ENG_CVM_CVM_1658945-1_B.2d_dxf.zip](#)

English

3D PDF

3D

Customer View Model

[ENG_CVM_CVM_1658945-1_B.3d_igs.zip](#)

English

Customer View Model

[ENG_CVM_CVM_1658945-1_B.3d_stp.zip](#)

English

By downloading the CAD file I accept and agree to the [Terms and Conditions](#) of use.

Datasheets & Catalog Pages

[1773408-1 Pluggable Input/Output Solutions catalog - XFP section](#)

English

Product Specifications

[Application Specification](#)

English

Product Environmental Compliance

[MD_1658945-1_08192016016_dmtec](#)

English

[MD_1658945-1_08192016016_dmtec](#)

English