

154717-6 ✓ ACTIVE

Positive Lock | Mark I, Positive Lock 250

TE Internal #: 154717-6

Quick Disconnects, Receptacle, 14 – 11 AWG Wire Size, 2.1 – 4.17 mm² Wire Size, Mating Tab Width 6.35 mm [.25 in], Straight, Brass, Positive Lock 250

[View on TE.com >](#)



Terminals & Splices > Quick Disconnects



Quick Disconnect Terminal Type: **Receptacle**

Wire Size: **2.1 – 4.17 mm²**

Mating Tab Width: **6.35 mm [.25 in]**

Mating Tab Thickness: **.81 mm [.032 in]**

Features

Product Type Features

Insertion Force	Low
-----------------	-----

Configuration Features

Connection Capacity	Single
---------------------	--------

Compatible With Wire & Cable Type	FLK
-----------------------------------	-----

Contact Features

Quick Disconnect Terminal Type	Receptacle
--------------------------------	------------

Mating Tab Width	6.35 mm [.25 in]
------------------	------------------

Mating Tab Thickness	.81 mm [.032 in]
----------------------	------------------

Terminal Orientation	Straight
----------------------	----------

Contact Base Material	Brass
-----------------------	-------

Terminal Plating Material	Pre-Tin
---------------------------	---------

Crimp Type	F-Crimp
------------	---------

Barrel Type	Open
-------------	------

Termination Features



Product Terminates To	Wire & Cable
-----------------------	--------------

Mechanical Attachment

Extraction Force	7 – 100 Newton
------------------	----------------

Wire Insulation Support	With
-------------------------	------

Mating Retention Type	Dimple
-----------------------	--------

Dimensions

Terminal Material Thickness	.41 mm[.016 in]
-----------------------------	-----------------

Product Length	22.5 mm[.886 in]
----------------	------------------

Compatible Insulation Diameter Range	3.6 – 4.3 mm[.141 – .169 in]
--------------------------------------	------------------------------

Wire Size	2.1 – 4.17 mm ²
-----------	----------------------------

Usage Conditions

Insulation Option	Uninsulated
-------------------	-------------

Operating Temperature Range	-40 – 110 °C[-40 – 230 °F]
-----------------------------	----------------------------

Industry Standards

Agency/Standard	UL
-----------------	----

Packaging Features

Packaging Quantity	1500
--------------------	------

Packaging Method	Strip/Reel
------------------	------------

Other

Terminals & Splices Comment	FLK-Wire: Normal Wire
-----------------------------	-----------------------

Product Compliance

[For compliance documentation, visit the product page on TE.com>](#)

EU RoHS Directive 2011/65/EU	Compliant
------------------------------	-----------

EU ELV Directive 2000/53/EC	Compliant
-----------------------------	-----------

China RoHS 2 Directive MIIT Order No 32, 2016	No Restricted Materials Above Threshold
---	---

EU REACH Regulation (EC) No. 1907/2006	Current ECHA Candidate List: JUNE 2023 (235) Candidate List Declared Against: JUNE 2023 (235) Does not contain REACH SVHC
--	---

Halogen Content	Low Halogen - Br, Cl, F, I < 900 ppm per homogenous material. Also BFR/CFR/PVC Free
-----------------	---

Solder Process Capability

Not applicable for solder process capability

Product Compliance Disclaimer

This information is provided based on reasonable inquiry of our suppliers and represents our current actual knowledge based on the information they provided. This information is subject to change. The part numbers that TE has identified as EU RoHS compliant have a maximum concentration of 0.1% by weight in homogenous materials for lead, hexavalent chromium, mercury, PBB, PBDE, DBP, BBP, DEHP, DIBP, and 0.01% for cadmium, or qualify for an exemption to these limits as defined in the Annexes of Directive 2011/65/EU (RoHS2). Finished electrical and electronic equipment products will be CE marked as required by Directive 2011/65/EU. Components may not be CE marked. Additionally, the part numbers that TE has identified as EU ELV compliant have a maximum concentration of 0.1% by weight in homogenous materials for lead, hexavalent chromium, and mercury, and 0.01% for cadmium, or qualify for an exemption to these limits as defined in the Annexes of Directive 2000/53/EC (ELV). Regarding the REACH Regulation, the information TE provides on SVHC in articles for this part number is based on the latest European Chemicals Agency (ECHA) 'Guidance on requirements for substances in articles' posted at this URL: <https://echa.europa.eu/guidance-documents/guidance-on-reach>

Compatible Parts



TE Part # 2305570-1
Strip Terminal Cutter-Side Feed-No Crimp



TE Part # 525651
DAHT POSITIVE LOCK 18-11 ASSY



TE Part # 724659-2
EXT TOOL FOR POSITIVE .250



TE Part # 2-2837766-2
OCEAN-2.0-APPLICATOR-S-140F180F



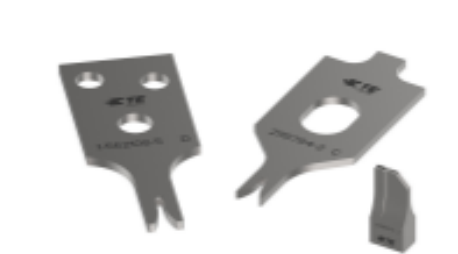
TE Part # 2151510-2
OCEAN_2.0-APPLICATOR-S-140F180F



TE Part # 2837766-2
OCEAN-2.0-APPLICATOR-S-140F180F



TE Part # 7-2151510-2
OCEAN_2.0-APPLICATOR-S-140F180F



TE Part # 7-2151510-7
OCEAN_2.0_SPARE_PART_KIT-140F180F



TE Part # 7-2837766-2
OCEAN-2.0-APPLICATOR-S-140F180F



TE Part # 7-2837766-7
OCEAN_2.0_SPARE_PART_KIT-140F180F



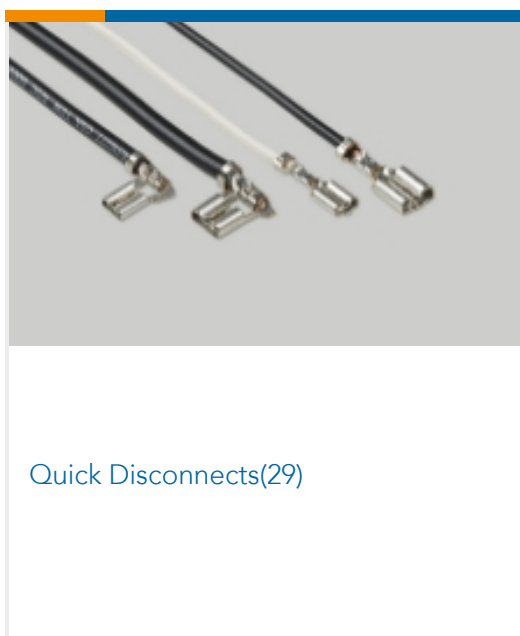
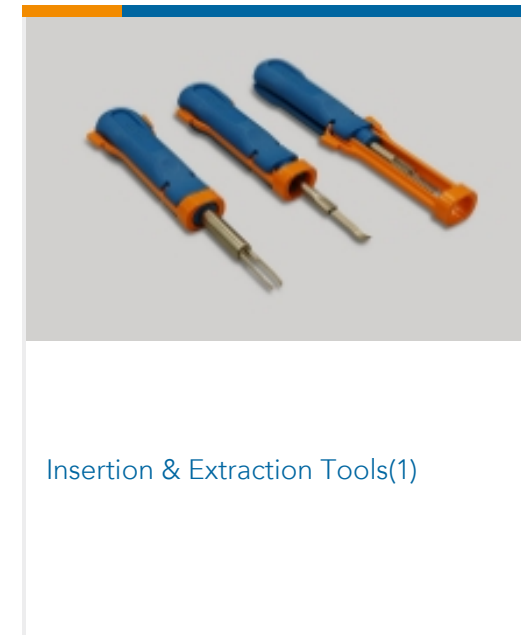
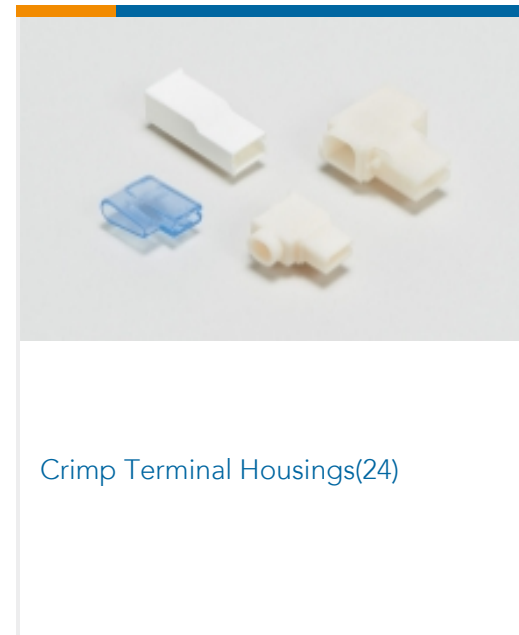
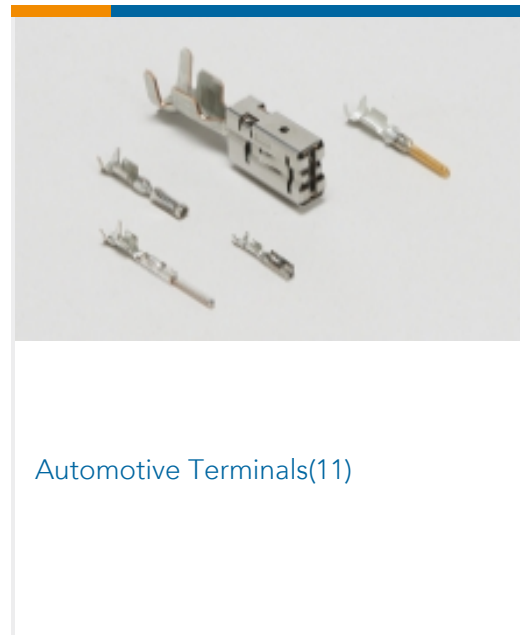
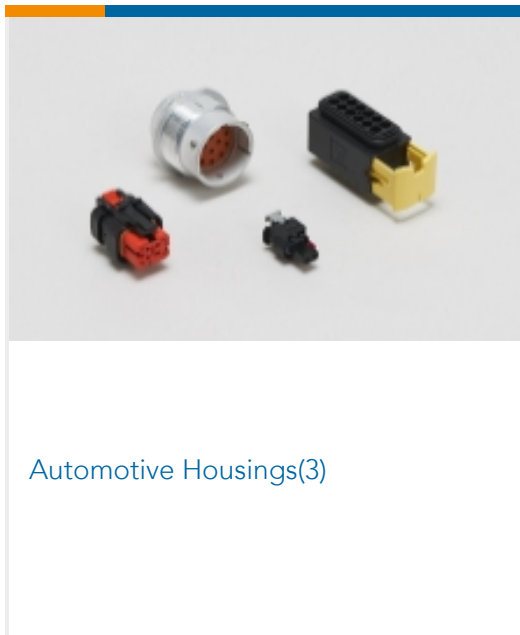
TE Part # 2-2266244-2
OC-PA-S-FA-140F180OV-001-0121



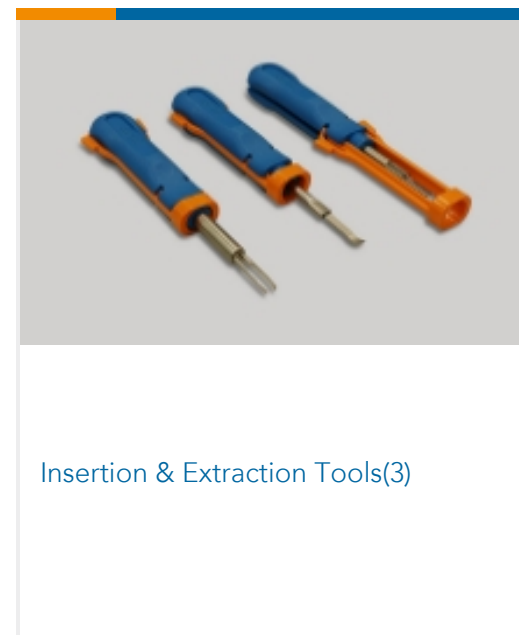
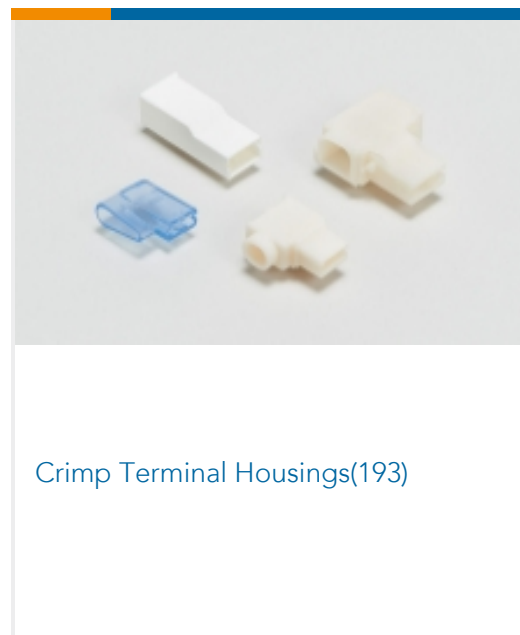
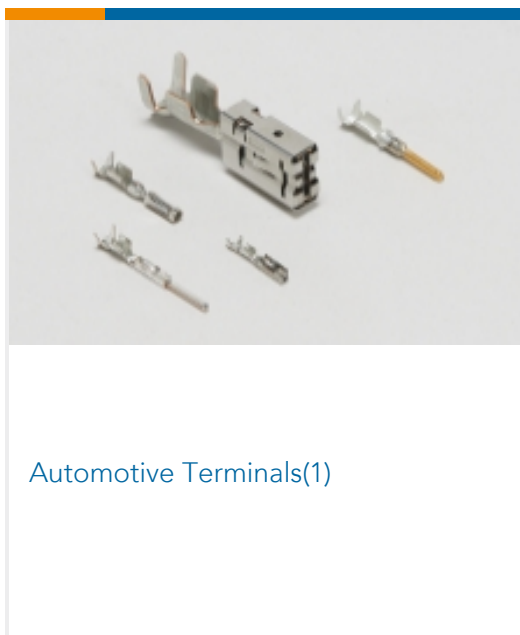
TE Part # 2266244-2
OC-AT-S-FA-140F180OV-001-0121

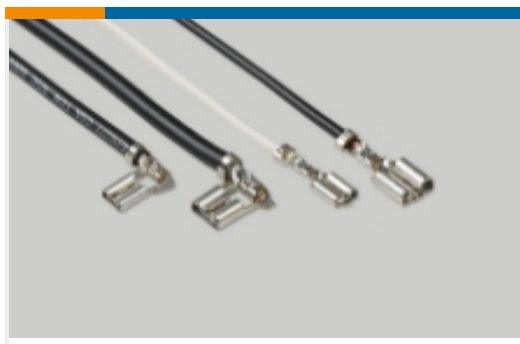


Also in the Series | Mark I



Also in the Series | Positive Lock 250





Quick Disconnects(186)

Customers Also Bought



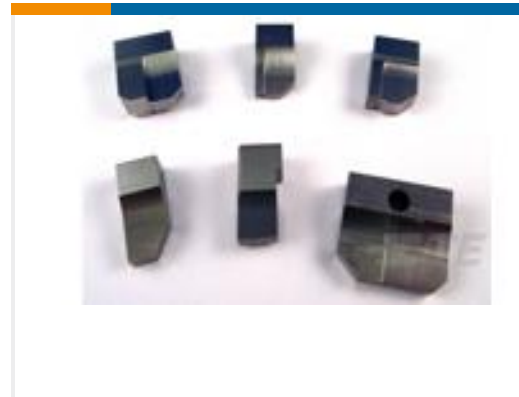
TE Part #154719
250 HSG. PL MKI REC. BLACK



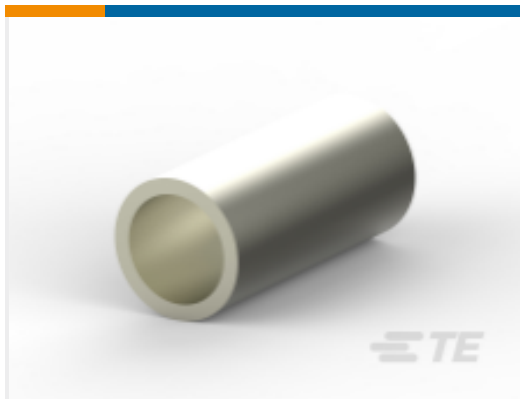
TE Part #1703727-1
2POS,JPT,HOUSING,ASSY,BK



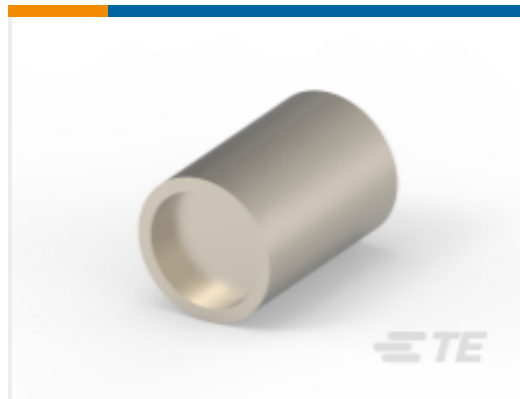
TE Part #3-1633713-8
CRIMPER, WIRE PREMIUM



TE Part #1-1633733-0
ANVIL, WIRE



TE Part #1-413889-4
FERRULE,NI PLTD



TE Part #1488499-3
FERRULE,NI PLT,RG58,FAKRA



TE Part #2035307-1
Insert, Plug, Gen Y, Hybrid, FAKRA 4



TE Part #2138982-1
JACK SUBASSEMBLY, 1.5SDS-QFB, FAKRA



TE Part #7-1924855-1
JACK HOUSING, 2 POSN, FAKRA, Key A,Power



TE Part #1924855-1
JACK HOUSING, 2 POSN, FAKRA, Key A

Documents

Product Drawings

[PL 250 REC TERMINAL 14-11 AWG PTPB](#)

English

CAD Files

[3D PDF](#)

3D

Customer View Model

[ENG_CVM_CVM_154717-6_AT.2d_dxf.zip](#)



English

Customer View Model

[ENG_CVM_CVM_154717-6_AT.3d_igs.zip](#)

English

Customer View Model

[ENG_CVM_CVM_154717-6_AT.3d_stp.zip](#)

English

By downloading the CAD file I accept and agree to the [Terms and Conditions](#) of use.

Datasheets & Catalog Pages

[1654742_HOUSEHOLD_APPLIANCES_RAST5](#)

English

Product Specifications

[Application Specification](#)

English

[Application Specification](#)

English

Product Environmental Compliance

[Product Compliance Document](#)

English

[Product Compliance Document](#)

English