

151469 ✓ ACTIVE

PIDG

TE Internal #: 151469

Crimp Wire Pins, Tabs & Ferrules, Blade, Mating Tab Width .18 in [4.59 mm], Mating Tab Thickness .83 mm [.033 in], 16 – 14 AWG

Wire Size, PIDG

[View on TE.com >](#)



Terminals & Splices > Crimp Wire Pins, Tabs & Ferrules



Crimp Wire Terminal Type: **Blade**

Mating Tab Width: **4.59 mm [.18 in]**

Mating Tab Thickness: **.83 mm [.033 in]**

Compatible Insulation Diameter Range: **2.92 – 4.31 mm, 4.29 mm [.115 – .17 in, .169 in]**

Wire Size: **16 – 14 AWG**

Features

Product Type Features

Sealable	No
Compatible With Discrete Wire Type	Stranded
Wire Insulation Support Retention Type	Insulation Support

Configuration Features

Compatible With Wire & Cable Type	Discrete Wire
-----------------------------------	---------------

Body Features

Sleeve Material	Copper
Sleeve Plating Material	Tin
Insulation Material	Nylon
Primary Product Color	Black

Contact Features

Contact Mating Area Length	16.51 mm[.649 in]
Crimp Wire Terminal Type	Blade
Mating Tab Width	4.59 mm[.18 in]



Mating Tab Thickness	.83 mm[.033 in]
Barrel Type	Closed
Terminal Plating Material	Tin
Terminal Orientation	Straight

Mechanical Attachment

Wire Insulation Support	With
-------------------------	------

Dimensions

DIN Wire Size	1 – 2.5 mm ²
Compatible Insulation Diameter Range	2.92 – 4.31 mm, 4.29 mm[.115 – .17 in][.169 in]
Wire Size	2050 – 5180 CMA
Barrel Inside Diameter	4.39 mm[.173 in]
Terminal Material Thickness	.83 mm[.033 in]
Overall Product Length	27.4 mm[1.079 in]

Usage Conditions

Insulation Option	Partially Insulated
Operating Temperature Range	105 °C[221 °F]

Packaging Features

Packaging Quantity	1000
Packaging Method	Carton

Other

Terminals & Splices Comment	Lipped Blade
-----------------------------	--------------

Product Compliance

[For compliance documentation, visit the product page on TE.com>](#)

EU RoHS Directive 2011/65/EU	Compliant
EU ELV Directive 2000/53/EC	Compliant
China RoHS 2 Directive MIIT Order No 32, 2016	No Restricted Materials Above Threshold
EU REACH Regulation (EC) No. 1907/2006	Current ECHA Candidate List: JUNE 2023 (235) Candidate List Declared Against: JUNE 2023 (235) Does not contain REACH SVHC
Halogen Content	Low Halogen - Br, Cl, F, I < 900 ppm per

homogenous material. Also BFR/CFR/PVC Free

Solder Process Capability

Not applicable for solder process capability

Product Compliance Disclaimer

This information is provided based on reasonable inquiry of our suppliers and represents our current actual knowledge based on the information they provided. This information is subject to change. The part numbers that TE has identified as EU RoHS compliant have a maximum concentration of 0.1% by weight in homogenous materials for lead, hexavalent chromium, mercury, PBB, PBDE, DBP, BBP, DEHP, DIBP, and 0.01% for cadmium, or qualify for an exemption to these limits as defined in the Annexes of Directive 2011/65/EU (RoHS2). Finished electrical and electronic equipment products will be CE marked as required by Directive 2011/65/EU. Components may not be CE marked. Additionally, the part numbers that TE has identified as EU ELV compliant have a maximum concentration of 0.1% by weight in homogenous materials for lead, hexavalent chromium, and mercury, and 0.01% for cadmium, or qualify for an exemption to these limits as defined in the Annexes of Directive 2000/53/EC (ELV). Regarding the REACH Regulation, the information TE provides on SVHC in articles for this part number is based on the latest European Chemicals Agency (ECHA) 'Guidance on requirements for substances in articles' posted at this URL: <https://echa.europa.eu/guidance-documents/guidance-on-reach>

Compatible Parts



TE Part # 59824-1
TETRA-CRIMP PIDG PG FASTON 22-10 ASSY



TE Part # 59250
T-HEAD PIDG 26-14 ASSY



TE Part # 47387
DAHT PG PIDG 20-14 ASSY



TE Part # 58423-1
DIE, RBY IS9252



TE Part # 58433-3
PRO CR ASSY, RBY IS9252



TE Part # 539691-2
ERGO DIE R.B.Y



TE Part # 2063030-1
SDE DIESET, RBY, UL



TE Part # 47807-1
DIES PIDG 16-14 DIE SET



TE Part # 169400
CERTI-LOK FRAME W/O DIES



TE Part # 1SET191001R0000
CRIMP-HT



TE Part # 1SET191002R0000
TET CRIMP-HT



TE Part # 169404
CERTI-LOK DIE

Also in the Series | PIDG



Compression Connectors(17)



Crimp Terminal Housings(1)



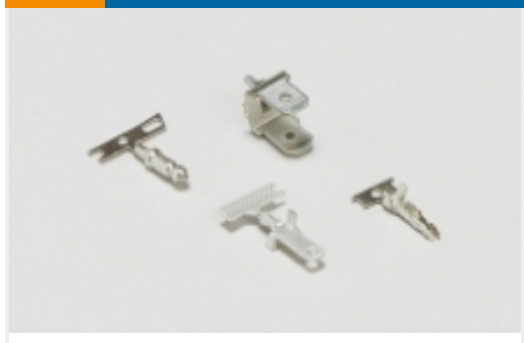
Crimp Wire Pins, Tabs & Ferrules(41)



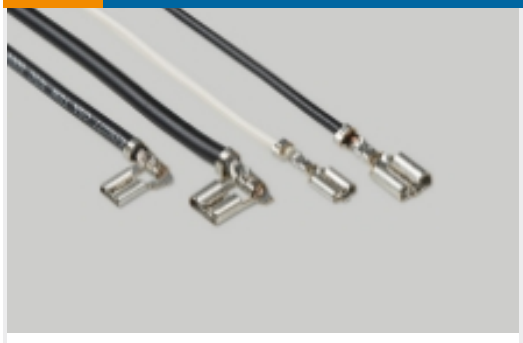
Hand Crimping Tools(2)



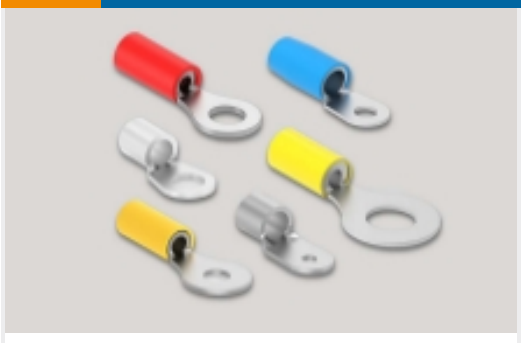
Knife Disconnects(11)



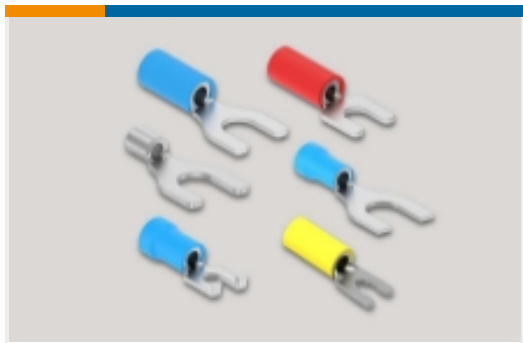
PCB Terminals(7)



Quick Disconnects(49)



Ring Terminals(611)



Spade Terminals(233)



Special Purpose Terminals(1)



Splices(46)

Customers Also Bought



TE Part #9-1393211-4
T92S11D22-24



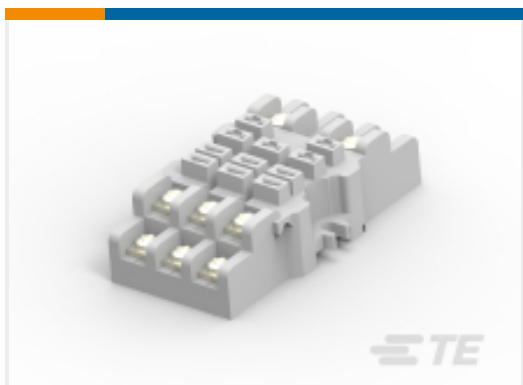
TE Part #DT06-3S-P006
PLG, 3P, GRY, 120 OHM RESISTOR



TE Part #320574
TERMINAL,PIDG R 16-14 10



TE Part #1-1879453-3
TE 1000W 10R 5% Bracket



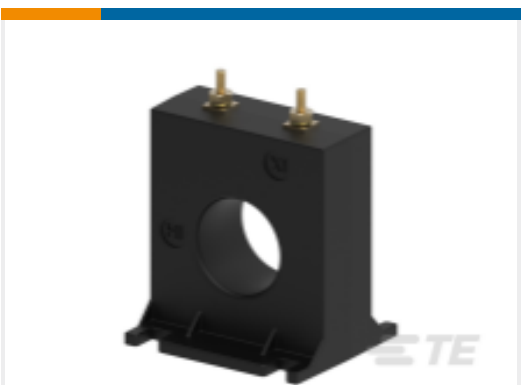
TE Part #1393143-5
27E121=SOCKET,KUP,11,SCW,PLE



TE Part #1622796-2
YR1 0.1% 100R



TE Part #3-1676913-0
YR1 0.1% 20K



TE Part #CJ8260-000
CI-2SFT-750



Documents

Product Drawings

16-14 PIDG LIP'D BLADE BLACK E

English

CAD Files

3D PDF

3D

Customer View Model

[ENG_CVM_CVM_151469_D.2d_dxf.zip](#)

English

Customer View Model

[ENG_CVM_CVM_151469_D.3d_igs.zip](#)

English

Customer View Model

[ENG_CVM_CVM_151469_D.3d_stp.zip](#)

English

By downloading the CAD file I accept and agree to the [Terms and Conditions](#) of use.

Datasheets & Catalog Pages

RADIATION_RESISTANT_PRE-INSULATED_TERMINALS_SPLICES

English

Product Specifications

Application Specification

English