



MQS

TE Internal #: 1379029-6
Housing for Female Terminals, Wire-to-Device, 4 Position, .1 in [2.54 mm] Centerline, Blue, Wire & Cable, Cable Mount (Free-Hanging), MQS

[View on TE.com >](#)

Connectors > Automotive Connectors > Automotive Housings > MQS, CONNECTOR HOUSING



Connector System: **Wire-to-Device**
Number of Positions: **4**
Connector & Housing Type: **Housing for Female Terminals**
Centerline (Pitch): **2.54 mm [.1 in]**
Sealable: **No**

[All MQS, CONNECTOR HOUSING \(573\)](#)

Features

Product Type Features

Mixed & Hybrid Connector	No
Connector Shape	Rectangular
Connector System	Wire-to-Device
Connector & Housing Type	Housing for Female Terminals
Sealable	No
Connector & Contact Terminates To	Wire & Cable
Primary Locking Feature	On the Terminal

Configuration Features

Number of Positions	4
Number of Rows	1

Electrical Characteristics

Operating Voltage	24 VDC
-------------------	--------

Body Features

Cable Exit Angle	180°
Primary Product Color	Blue

Contact Features

--	--



Contact Size	.63mm
Contact Type	Receptacle
Mating Tab Width	.63 mm[.025 in]

Mechanical Attachment

Terminal Position Assurance	Yes
Strain Relief	Without
Mating Alignment Type	Keyed
Mating Alignment	With
Connector Mounting Type	Cable Mount (Free-Hanging)

Housing Features

Housing Material	PBT GF
Centerline (Pitch)	2.54 mm[.1 in]

Dimensions

Connector Height	10.7 mm[.421 in]
Product Width	17.6 mm[.693 in]
Product Length	16.5 mm[.65 in]

Usage Conditions

Operating Temperature (Max)	150 °C[302 °F]
Operating Temperature Range	40 – 150 °C[-40 – 302 °F]

Industry Standards

UL Flammability Rating	UL 94HB
------------------------	---------

Packaging Features

Packaging Method	Box
------------------	-----

Other

Serviceable	No
Connector Position Assurance Capable	No

Product Compliance

For compliance documentation, visit the product page on TE.com>

EU RoHS Directive 2011/65/EU	Compliant
EU ELV Directive 2000/53/EC	Compliant
China RoHS 2 Directive MIIT Order No 32, 2016	No Restricted Materials Above Threshold



EU REACH Regulation (EC) No. 1907/2006	Current ECHA Candidate List: JUNE 2023 (235) Candidate List Declared Against: JUNE 2023 (235) Does not contain REACH SVHC
Halogen Content	Low Halogen - Br, Cl, F, I < 900 ppm per homogenous material. Also BFR/CFR/PVC Free
Solder Process Capability	Not reviewed for solder process capability

Product Compliance Disclaimer

This information is provided based on reasonable inquiry of our suppliers and represents our current actual knowledge based on the information they provided. This information is subject to change. The part numbers that TE has identified as EU RoHS compliant have a maximum concentration of 0.1% by weight in homogenous materials for lead, hexavalent chromium, mercury, PBB, PBDE, DBP, BBP, DEHP, DIBP, and 0.01% for cadmium, or qualify for an exemption to these limits as defined in the Annexes of Directive 2011/65/EU (RoHS2). Finished electrical and electronic equipment products will be CE marked as required by Directive 2011/65/EU. Components may not be CE marked. Additionally, the part numbers that TE has identified as EU ELV compliant have a maximum concentration of 0.1% by weight in homogenous materials for lead, hexavalent chromium, and mercury, and 0.01% for cadmium, or qualify for an exemption to these limits as defined in the Annexes of Directive 2000/53/EC (ELV). Regarding the REACH Regulation, the information TE provides on SVHC in articles for this part number is based on the latest European Chemicals Agency (ECHA) 'Guidance on requirements for substances in articles' posted at this URL: <https://echa.europa.eu/guidance-documents/guidance-on-reach>

Compatible Parts



TE Part # 144969-1
MQS0,63 Sn rec LL unseal. 0,2-0,6



TE Part # CAT-SIGH262
Signal Header

Also in the Series | MQS



Automotive Connector Caps & Covers (138)



Automotive Connector EMC Shielding (3)



Automotive Connector Locks & Position Assurance(30)



Automotive Housings(507)



Automotive Terminals(104)



Connector Seals & Cavity Plugs(31)



Insertion & Extraction Tools(42)

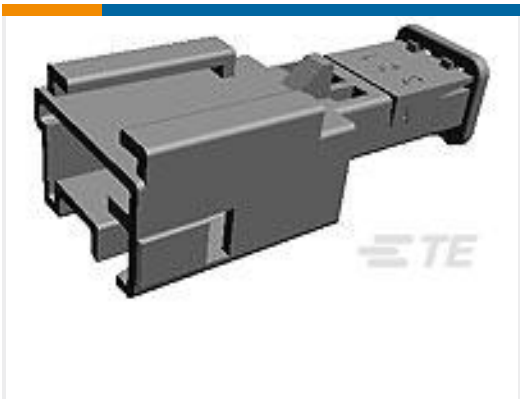


Other Automotive Connector Accessories(10)



PCB Headers & Receptacles(213)

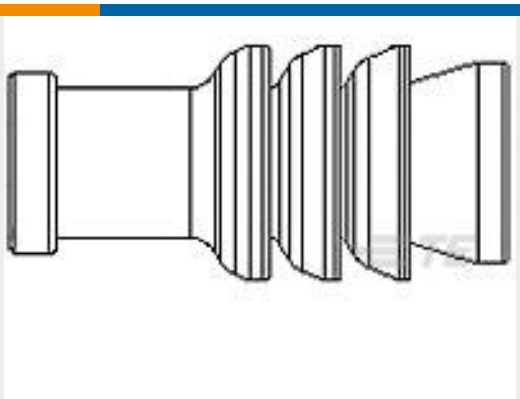
Customers Also Bought



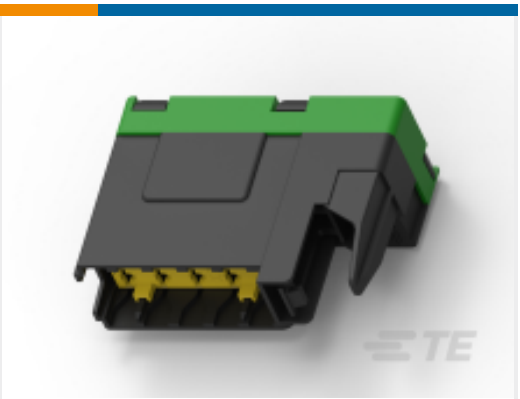
TE Part #953698-1
3POS MQS TAB



TE Part #1379659-1
TH/.025 CONNECTOR SYSTEM, HOUSING



TE Part #963143-1
MQS BLINDSTOPFEN



TE Part #1544647-1
BFH 5



TE Part #1379095-2
COV+LEV MQS 12W 0DEG BLUE



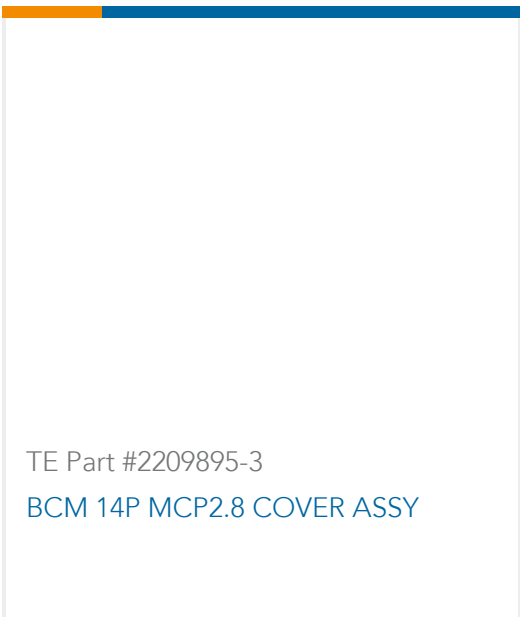
TE Part #1801175-3
2W RECEPTACLE HP CONNECTOR GREY



TE Part #1732175-1
2+5 Sealed Connector Ass'y



TE Part #1801600-2
RECEPTACLE HOUSING, MCON, 10 W, SEALED



TE Part #2209895-3
BCM 14P MCP2.8 COVER ASSY

Documents



Product Drawings

4POS MQS REC

English

CAD Files

Customer View Model

ENG_CVM_CVM_1379029-6_A.2d_dxf.zip

English

3D PDF

3D

Customer View Model

ENG_CVM_CVM_1379029-6_A.3d_igs.zip

English

Customer View Model

ENG_CVM_CVM_1379029-6_A.3d_stp.zip

English

By downloading the CAD file I accept and agree to the [Terms and Conditions](#) of use.

Datasheets & Catalog Pages

Micro Quadlok Interconnection System (MQS)

English

Product Specifications

Process Specification

English

Instruction Sheets

Instruction Sheet (non U.S.)

English