



TE Internal #: 1367629-2

SFP, SFP+ & zSFP+, Cage, Data Rate (Max) 4 Gb/s, Internal /External EMI Springs, SFP, With Lightpipe, 1 x 1, Dual Round, Standard, Standard

[View on TE.com >](#)

Connectors > Pluggable IO Connectors & Cages > SFP, SFP+ & zSFP+



Pluggable I/O Product Type: **Cage**

Data Rate (Max): **4 Gb/s**

EMI Containment Feature Type: **Internal/External EMI Springs**

Pluggable I/O Applications: **SFP**

Lightpipe Options: **With Lightpipe**

Features

Product Type Features

Form Factor	SFP
Cage Type	Single
Pluggable I/O Product Type	Cage
Lightpipe Options	With Lightpipe
Connector System	Cable-to-Board
Sealable	No
Connector & Contact Terminates To	Printed Circuit Board

Configuration Features

Port Matrix Configuration	1 x 1
Lightpipe Configuration	Dual Round
Lightpipe Style	Standard
Lightpipe Profile	Standard
Number of Ports	1

Electrical Characteristics

--	--



Data Rate (Max)	4 Gb/s
-----------------	--------

Termination Features

Termination Post & Tail Length	3 mm[.118 in]
Termination Method to Printed Circuit Board	Through Hole - Press-Fit

Mechanical Attachment

Connector Mounting Type	Board Mount
-------------------------	-------------

Housing Features

Cage Material	Copper Alloy
---------------	--------------

Dimensions

PCB Thickness (Recommended)	1.5 mm[.059 in]
-----------------------------	-----------------

Usage Conditions

Operating Temperature Range	-55 – 85 °C[-67 – 185 °F]
-----------------------------	---------------------------

Operation/Application

Heat Sink Compatible	No
For Use With Pluggable I/O Products	SFP SMT Connector
Pluggable I/O Applications	SFP

Packaging Features

Packaging Method	Box & Tray
------------------	------------

Other

EMI Containment Feature Type	Internal/External EMI Springs
------------------------------	-------------------------------

Product Compliance

[For compliance documentation, visit the product page on TE.com>](#)

EU RoHS Directive 2011/65/EU	Compliant
EU ELV Directive 2000/53/EC	Compliant
China RoHS 2 Directive MIIT Order No 32, 2016	No Restricted Materials Above Threshold
EU REACH Regulation (EC) No. 1907/2006	Current ECHA Candidate List: JUNE 2023 (235) Candidate List Declared Against: JUNE 2023 (235) Does not contain REACH SVHC
Halogen Content	Not Low Halogen - contains Br or Cl > 900 ppm.

Solder Process Capability

Not applicable for solder process capability

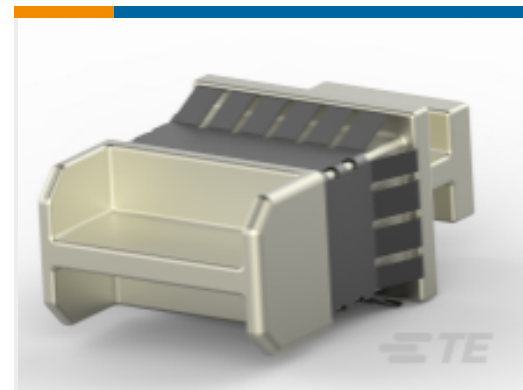
Product Compliance Disclaimer

This information is provided based on reasonable inquiry of our suppliers and represents our current actual knowledge based on the information they provided. This information is subject to change. The part numbers that TE has identified as EU RoHS compliant have a maximum concentration of 0.1% by weight in homogenous materials for lead, hexavalent chromium, mercury, PBB, PBDE, DBP, BBP, DEHP, DIBP, and 0.01% for cadmium, or qualify for an exemption to these limits as defined in the Annexes of Directive 2011/65/EU (RoHS2). Finished electrical and electronic equipment products will be CE marked as required by Directive 2011/65/EU. Components may not be CE marked. Additionally, the part numbers that TE has identified as EU ELV compliant have a maximum concentration of 0.1% by weight in homogenous materials for lead, hexavalent chromium, and mercury, and 0.01% for cadmium, or qualify for an exemption to these limits as defined in the Annexes of Directive 2000/53/EC (ELV). Regarding the REACH Regulation, the information TE provides on SVHC in articles for this part number is based on the latest European Chemicals Agency (ECHA) 'Guidance on requirements for substances in articles' posted at this URL: <https://echa.europa.eu/guidance-documents/guidance-on-reach>

Compatible Parts



TE Part # CAT-SF59-C76264
SFP Connectors



TE Part # 1888901-1
SFP+ EMI Plug



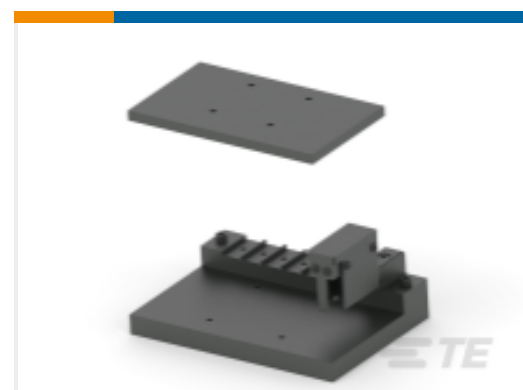
TE Part # 1367147-1
SFP COVER, UNPLATED



TE Part # 1367147-3
SFP COVER, UNPL, NO LOGO



TE Part # 1761394-1
DUST COVER, SFP, GANGED & STACKED



TE Part # 2215067-2
ASSY, EXTRACTION TOOL, 1 X 1



TE Part # 2215070-4
ASSY, SEATING TOOL

Customers Also Bought



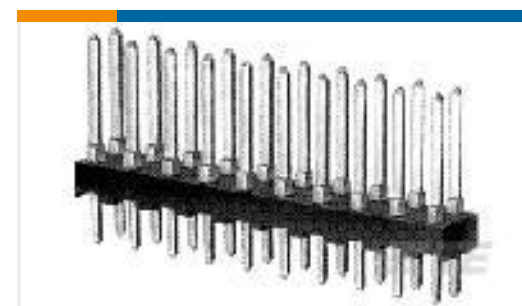
TE Part #2227104-1
1X2 CAGE ASSY, BHND BEZEL, QSFP28



TE Part #5520250-2
MJ,R/A,6P/4C,PNL STOPS,TRAY



TE Part #6364288-1
INV MJ,1X1,PNL GRD,RJ11BLOCK,BLK



TE Part #1-87227-0
20 MODII HDR DRST UNSHRD .100



TE Part #2173234-1
Heat Sink Clip zQSFP+



TE Part #1645568-1
12 ROW HM RA REC ASY 144P CTR



TE Part #1551920-4
zQSFP+ connector assembly



TE Part #2170394-4
QSFP HEAT SINK, 13.5MM TALL,
NICKEL PLATIN

Documents

Product Drawings

[cage assy, 20 press fit, sfp w](#)

English

CAD Files

[3D PDF](#)

3D

Customer View Model

[ENG_CVM_CVM_1367629-2_B.2d_dxf.zip](#)

English

Customer View Model

[ENG_CVM_CVM_1367629-2_B.3d_igs.zip](#)

English

Customer View Model

[ENG_CVM_CVM_1367629-2_B.3d_stp.zip](#)

English

By downloading the CAD file I accept and agree to the [Terms and Conditions](#) of use.

Product Specifications

[Application Specification](#)

English

Product Environmental Compliance

[Product Compliance](#)

English

[Product Compliance](#)

English