

1-2337216-3 ✓ ACTIVE

LUMAWISE | LUMAWISE Endurance S

TE Internal #: 1-2337216-3

Zhaga Book 18 Street Lighting Connectors, Accessory, Dark Gray,  
Height 18.4 mm, None, 1 Position, LUMAWISE Endurance S

[View on TE.com >](#)



Connectors > Lighting Connectors > Street Lighting Controls > Zhaga Book 18 Street Lighting Connectors



Lighting Product Type: **Accessory**

Primary Product Color: **Dark Gray**

Product Height: **18.4 mm**

Agency/Standard: **None**

Number of Positions: **1**

## Features

### Product Type Features

Lighting Product Type	Accessory
Sealable	No

### Configuration Features

Number of Positions	1
---------------------	---

### Body Features

Primary Product Color	Dark Gray
-----------------------	-----------

### Dimensions

Product Diameter	80 mm
Product Height	18.4 mm

### Industry Standards

Agency/Standard	None
-----------------	------

## Product Compliance

[For compliance documentation, visit the product page on TE.com>](#)


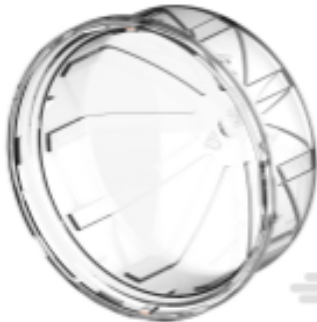
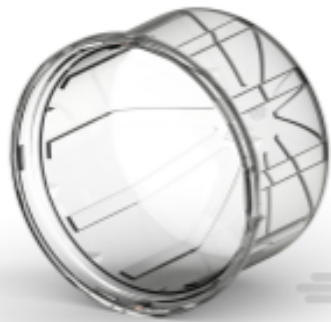

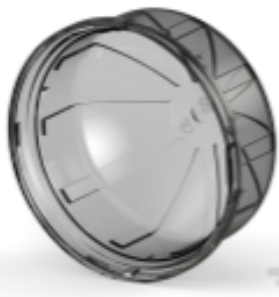
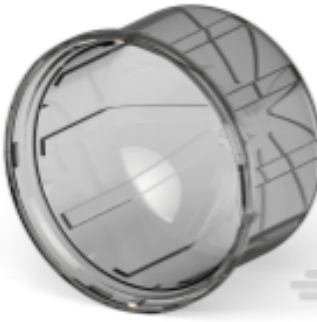

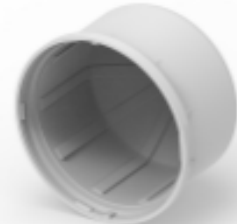


EU RoHS Directive 2011/65/EU	Compliant
EU ELV Directive 2000/53/EC	Compliant
China RoHS 2 Directive MIIT Order No 32, 2016	No Restricted Materials Above Threshold
EU REACH Regulation (EC) No. 1907/2006	Current ECHA Candidate List: JUNE 2023 (235) Candidate List Declared Against: JAN 2023 (233) Does not contain REACH SVHC
Halogen Content	Low Halogen - Br, Cl, F, I < 900 ppm per homogenous material. Also BFR/CFR/PVC Free
Solder Process Capability	Not reviewed for solder process capability

Product Compliance Disclaimer

This information is provided based on reasonable inquiry of our suppliers and represents our current actual knowledge based on the information they provided. This information is subject to change. The part numbers that TE has identified as EU RoHS compliant have a maximum concentration of 0.1% by weight in homogenous materials for lead, hexavalent chromium, mercury, PBB, PBDE, DBP, BBP, DEHP, DIBP, and 0.01% for cadmium, or qualify for an exemption to these limits as defined in the Annexes of Directive 2011/65/EU (RoHS2). Finished electrical and electronic equipment products will be CE marked as required by Directive 2011/65/EU. Components may not be CE marked. Additionally, the part numbers that TE has identified as EU ELV compliant have a maximum concentration of 0.1% by weight in homogenous materials for lead, hexavalent chromium, and mercury, and 0.01% for cadmium, or qualify for an exemption to these limits as defined in the Annexes of Directive 2000/53/EC (ELV). Regarding the REACH Regulation, the information TE provides on SVHC in articles for this part number is based on the latest European Chemicals Agency (ECHA) 'Guidance on requirements for substances in articles' posted at this URL: <https://echa.europa.eu/guidance-documents/guidance-on-reach>

## Compatible Parts

 TE Part # 1-2328823-1 LUMAWISE S 80MM DIA DOME CLEAR LOW	 TE Part # 1-2328823-2 LUMAWISE S 80MM DIA DOME CLEAR MEDIUM	 TE Part # 1-2328823-3 LUMAWISE S 80MM DIA DOME CLEAR TALL	 TE Part # 2328823-1 LUMAWISE S 80MM DIA DOME SMOKE GRAY LOW
 TE Part # 2328823-2 LUMAWISE S 80MM DIA DOME SMOKE GRAY MED	 TE Part # 2328823-3 LUMAWISE S 80MM DIA DOME SMOKE GRAY TALL	 TE Part # 4-2328823-2 LUMAWISE ENDURANCE S 80MM DOME, GRAY MED	 TE Part # 4-2328823-3 LUMAWISE ENDURANCE S 80MM DOME,GRAY TALL

## Also in the Series | LUMAWISE Endurance S



Poke-In Connectors(1)



Street Lighting Power Management(1)



Zhaga Book 18 Street Lighting Connectors(35)

## Customers Also Bought



TE Part #1-1123309-2  
DYNAMIC D-5 HDR H ASSY 4P XX



TE Part #175365-5  
DYNAMIC 3500 HDR ASSY 20P



TE Part #1-178139-2  
DYNAMIC 3200 HDR H 6P ASSY



TE Part #963357-2  
Low & Medium Power Header



TE Part #292250-4  
CT P/HDR BOX H ASSY 4P W/KINK



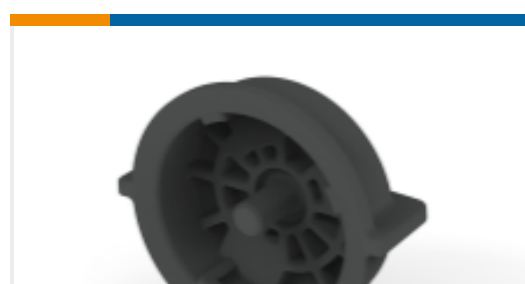
TE Part #1825058-1  
ADE02S04=DIP SWTCH,EXT,SMT-GW



TE Part #2213858-1  
RECEPTACLE ASSEM., LUMAWISE  
ENDURANCE S



TE Part #1-2328823-1  
LUMAWISE S 80MM DIA DOME  
CLEAR LOW



TE Part #2213795-1  
SEALING CAP, RCPT, LUMAWISE  
ENDURANCE S

## Documents

### Product Drawings

[RAIN-SKIRT, LUMAWISE ENDURANCE S, DK GRY](#)

English

### CAD Files

[3D PDF](#)

[3D](#)

### Customer View Model

[ENG\\_CVM\\_CVM\\_1-2337216-3\\_A.2d\\_dxf.zip](#)



English

**Customer View Model**

[ENG\\_CVM\\_CVM\\_1-2337216-3\\_A.3d\\_igs.zip](#)

English

**Customer View Model**

[ENG\\_CVM\\_CVM\\_1-2337216-3\\_A.3d\\_stp.zip](#)

English

By downloading the CAD file I accept and agree to the [Terms and Conditions](#) of use.

---

## Datasheets & Catalog Pages

[LUMAWISE ENDURANCE Connector System](#)

English

[LUMAWISE STREET LIGHT DIMMING AND CONTROL QUICK REFERENCE GUIDE](#)

English

[Lumawise Endurance S Modules](#)

English

---

## Product Environmental Compliance

[Product Compliance](#)

English

[Product Compliance](#)

English