



zQSFP+/QSFP28

TE Internal #: 1-2308171-1

QSFP, QSFP+ & zQSPF+, Cage Assembly with Integrated Connector, 2 x 2, Internal/External EMI Springs, Included Lightpipe, Standard, zQSFP+/QSFP28

[View on TE.com >](#)

Connectors > Pluggable IO Connectors & Cages > QSFP, QSFP+ & zQSPF+



Pluggable I/O Product Type: **Cage Assembly with Integrated Connector**

Port Matrix Configuration: **2 x 2**

EMI Containment Feature Type: **Internal/External EMI Springs**

Included Lightpipe: **Yes**

Enhancements: **Standard**

Features

Product Type Features

Pluggable I/O Accessory Type	Lightpipe
Form Factor	zQSFP+
Cage Type	Stacked
Pluggable I/O Product Type	Cage Assembly with Integrated Connector
Connector System	Cable-to-Board
Sealable	No
Connector & Contact Terminates To	Printed Circuit Board

Configuration Features

Port Matrix Configuration	2 x 2
Number of Ports	4
Lightpipe Configuration	All Four Round
Number of Rear EONs per Port Column	0
Number of Positions	152

Contact Features



Contact Mating Area Plating Material Thickness	30 µm[.76 µin]
Contact Mating Area Plating Material	Gold
PCB Contact Termination Area Plating Material	Tin
Contact Current Rating (Max)	.5 A

Termination Features

Termination Post & Tail Length	2 mm[.079 in]
Termination Method to Printed Circuit Board	Through Hole - Press-Fit

Mechanical Attachment

Connector Mounting Type	Board Mount
-------------------------	-------------

Housing Features

Cage Material	Nickel Silver Alloy
Centerline (Pitch)	.8 mm[.032 in]

Dimensions

PCB Thickness (Recommended)	3 mm
-----------------------------	------

Usage Conditions

Operating Temperature Range	-40 – 85 °C[-40 – 185 °F]
-----------------------------	---------------------------

Operation/Application

Heat Sink Compatible	No
For Use With Pluggable I/O Products	QSFP28 Cable Assembly
Pluggable I/O Applications	QSFP28
Circuit Application	Signal

Industry Standards

UL Flammability Rating	UL 94V-0
------------------------	----------

Packaging Features

Packaging Method	Box & Tray
------------------	------------

Other

EMI Containment Feature Type	Internal/External EMI Springs
Included Lightpipe	Yes
Enhancements	Standard

Product Compliance

[For compliance documentation, visit the product page on TE.com>](#)



EU RoHS Directive 2011/65/EU	Compliant
EU ELV Directive 2000/53/EC	Compliant
China RoHS 2 Directive MIIT Order No 32, 2016	No Restricted Materials Above Threshold
EU REACH Regulation (EC) No. 1907/2006	Current ECHA Candidate List: JUNE 2023 (235) Candidate List Declared Against: JUNE 2023 (235) Does not contain REACH SVHC
Halogen Content	Not Low Halogen - contains Br or Cl > 900 ppm.
Solder Process Capability	Not applicable for solder process capability

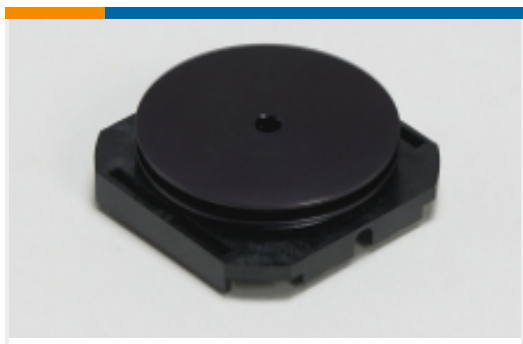
Product Compliance Disclaimer

This information is provided based on reasonable inquiry of our suppliers and represents our current actual knowledge based on the information they provided. This information is subject to change. The part numbers that TE has identified as EU RoHS compliant have a maximum concentration of 0.1% by weight in homogenous materials for lead, hexavalent chromium, mercury, PBB, PBDE, DBP, BBP, DEHP, DIBP, and 0.01% for cadmium, or qualify for an exemption to these limits as defined in the Annexes of Directive 2011/65/EU (RoHS2). Finished electrical and electronic equipment products will be CE marked as required by Directive 2011/65/EU. Components may not be CE marked. Additionally, the part numbers that TE has identified as EU ELV compliant have a maximum concentration of 0.1% by weight in homogenous materials for lead, hexavalent chromium, and mercury, and 0.01% for cadmium, or qualify for an exemption to these limits as defined in the Annexes of Directive 2000/53/EC (ELV). Regarding the REACH Regulation, the information TE provides on SVHC in articles for this part number is based on the latest European Chemicals Agency (ECHA) 'Guidance on requirements for substances in articles' posted at this URL: <https://echa.europa.eu/guidance-documents/guidance-on-reach>

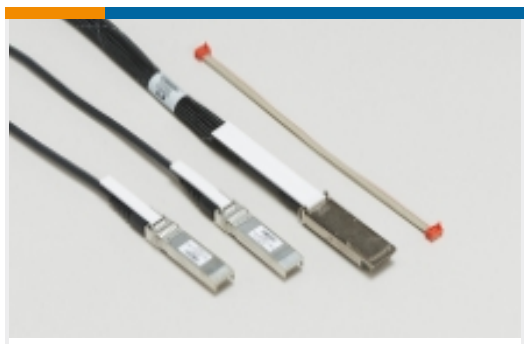
Compatible Parts



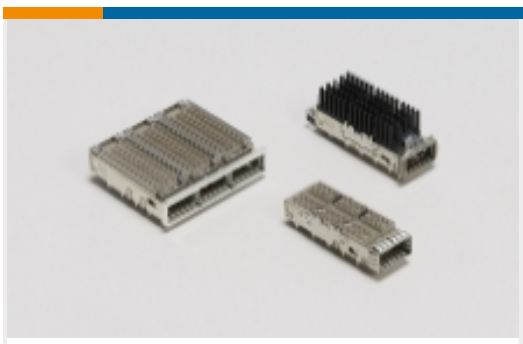
Also in the Series | zQSFP+/QSFP28



Heat Sinks(1)



Pluggable I/O Cable Assemblies(81)

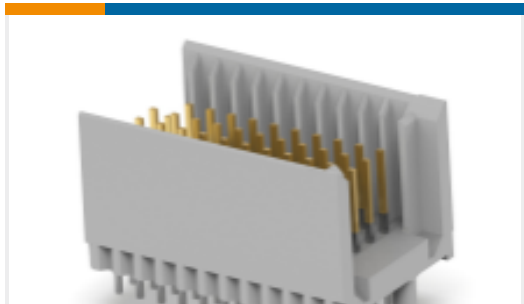


QSFP, QSFP+ & zQSFP+(425)

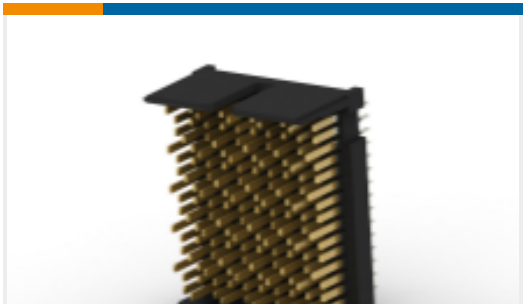
Customers Also Bought



TE Part #2132423-1
IMP100O,R,RA3P6C,RG,39



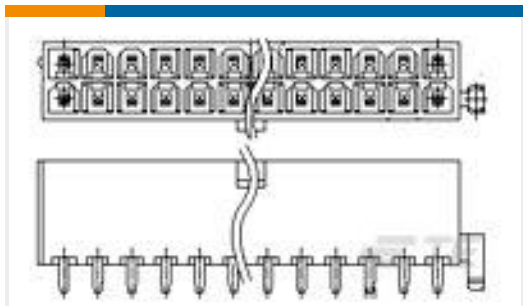
TE Part #2170872-1
Z-PACK TYPE/C MALE HDR 55P



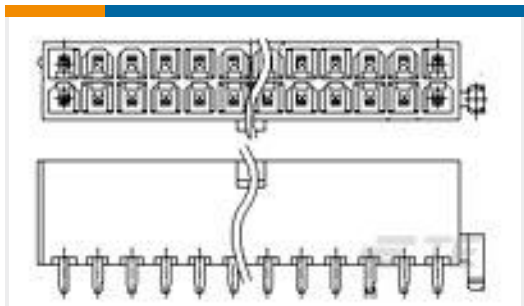
TE Part #1934937-1
Tinman 5pr 10col open hdr assy



TE Part #2007850-1
IMP100S,H,V5P10C,UG,DEW46,4,5



TE Part #3-1775099-2
ATX PWR CONN 1 BDLK 8 POS



TE Part #3-1775099-5
ATX PWR CONN 1 BDLK 14 POS



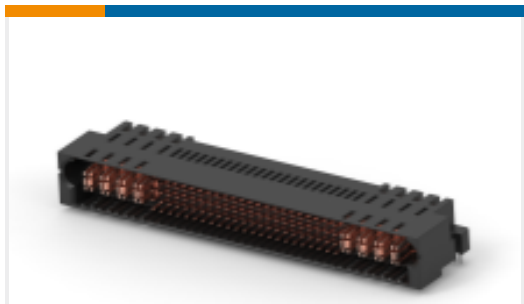
TE Part #5-2170790-4
CAGE ASSY, 1X4, QSFP28, SPRING, HS, LP



TE Part #6-1658043-2
MSB0.80RC-ASY080FL,GP,F,-TR



TE Part #6450834-1
MBXL R/A HDR STR 1P/8S/1P



TE Part #2-2204910-5
MBXLE R/A HEADER 4HDP + 92S + 4HDP

Documents

CAD Files

Customer View Model

[ENG_CVM_CVM_1-2308171-1_A1.3d_igs.zip](#)

English

Customer View Model

[ENG_CVM_CVM_1-2308171-1_A1.3d_stp.zip](#)

English

[3D PDF](#)



3D

Customer View Model

[ENG_CVM_CVM_1-2308171-1_A1.2d_dxf.zip](#)

English

By downloading the CAD file I accept and agree to the [Terms and Conditions](#) of use.

Product Specifications

[Application Specification](#)

English