



**zQSFP+/QSFP28**

TE Internal #: 1-2308171-0

QSFP, QSFP+ & zQSFP+, Cage Assembly with Integrated Connector, 2 x 2, Internal/External EMI Springs, Included Lightpipe, Standard, zQSFP+/QSFP28

[View on TE.com >](#)

Connectors > Pluggable IO Connectors & Cages > QSFP, QSFP+ & zQSFP+



Pluggable I/O Product Type: **Cage Assembly with Integrated Connector**

Port Matrix Configuration: **2 x 2**

EMI Containment Feature Type: **Internal/External EMI Springs**

Included Lightpipe: **Yes**

Enhancements: **Standard**

**Features**

**Product Type Features**

Form Factor	zQSFP+
Pluggable I/O Accessory Type	Lightpipe
Cage Type	Stacked
Pluggable I/O Product Type	Cage Assembly with Integrated Connector
Connector System	Cable-to-Board
Sealable	No
Connector & Contact Terminates To	Printed Circuit Board

**Configuration Features**

Port Matrix Configuration	2 x 2
Number of Ports	4
Lightpipe Configuration	All Four Round
Number of Rear EONs per Port Column	0
Number of Positions	152

**Contact Features**



Contact Mating Area Plating Material Thickness	30 µm[.76 µin]
--	----------------

Contact Mating Area Plating Material	Gold
--------------------------------------	------

PCB Contact Termination Area Plating Material	Tin
---	-----

Contact Current Rating (Max)	.5 A
------------------------------	------

### Termination Features

Termination Post & Tail Length	2 mm[.079 in]
--------------------------------	---------------

Termination Method to Printed Circuit Board	Through Hole - Press-Fit
---	--------------------------

### Mechanical Attachment

Connector Mounting Type	Board Mount
-------------------------	-------------

### Housing Features

Cage Material	Nickel Silver Alloy
---------------	---------------------

Centerline (Pitch)	.8 mm[.032 in]
--------------------	----------------

### Dimensions

PCB Thickness (Recommended)	3 mm
-----------------------------	------

### Usage Conditions

Operating Temperature Range	-40 – 85 °C[-40 – 185 °F]
-----------------------------	---------------------------

### Operation/Application

Heat Sink Compatible	No
----------------------	----

For Use With Pluggable I/O Products	QSFP28 Cable Assembly
-------------------------------------	-----------------------

Pluggable I/O Applications	QSFP28
----------------------------	--------

Circuit Application	Signal
---------------------	--------

### Industry Standards

UL Flammability Rating	UL 94V-0
------------------------	----------

### Packaging Features

Packaging Method	Box & Tray
------------------	------------

### Other

EMI Containment Feature Type	Internal/External EMI Springs
------------------------------	-------------------------------

Included Lightpipe	Yes
--------------------	-----

Enhancements	Standard
--------------	----------

## Product Compliance

[For compliance documentation, visit the product page on TE.com>](#)

EU RoHS Directive 2011/65/EU	Compliant
EU ELV Directive 2000/53/EC	Compliant
China RoHS 2 Directive MIIT Order No 32, 2016	No Restricted Materials Above Threshold
EU REACH Regulation (EC) No. 1907/2006	Current ECHA Candidate List: JUNE 2023 (235) Candidate List Declared Against: JUNE 2023 (235) Does not contain REACH SVHC
Halogen Content	Not Low Halogen - contains Br or Cl > 900 ppm.
Solder Process Capability	Not applicable for solder process capability

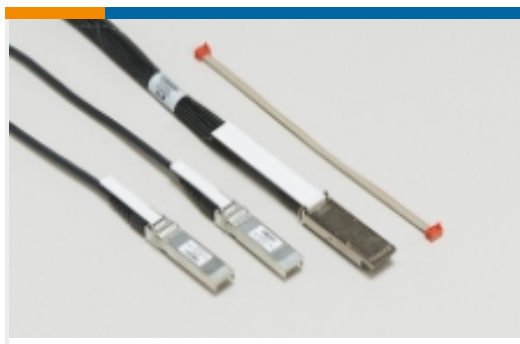
#### Product Compliance Disclaimer

This information is provided based on reasonable inquiry of our suppliers and represents our current actual knowledge based on the information they provided. This information is subject to change. The part numbers that TE has identified as EU RoHS compliant have a maximum concentration of 0.1% by weight in homogenous materials for lead, hexavalent chromium, mercury, PBB, PBDE, DBP, BBP, DEHP, DIBP, and 0.01% for cadmium, or qualify for an exemption to these limits as defined in the Annexes of Directive 2011/65/EU (RoHS2). Finished electrical and electronic equipment products will be CE marked as required by Directive 2011/65/EU. Components may not be CE marked. Additionally, the part numbers that TE has identified as EU ELV compliant have a maximum concentration of 0.1% by weight in homogenous materials for lead, hexavalent chromium, and mercury, and 0.01% for cadmium, or qualify for an exemption to these limits as defined in the Annexes of Directive 2000/53/EC (ELV). Regarding the REACH Regulation, the information TE provides on SVHC in articles for this part number is based on the latest European Chemicals Agency (ECHA) 'Guidance on requirements for substances in articles' posted at this URL: <https://echa.europa.eu/guidance-documents/guidance-on-reach>

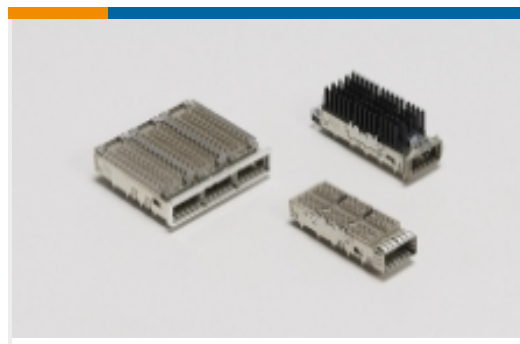
## Compatible Parts



## Also in the Series | [zQSFP+/QSFP28](#)

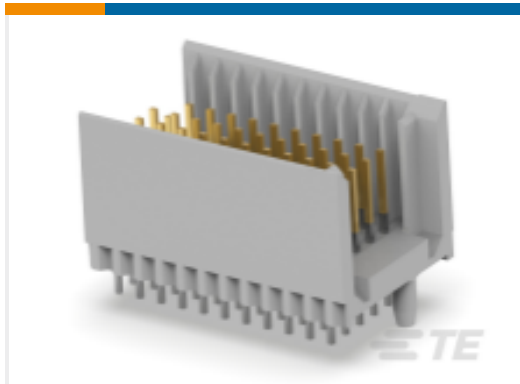


Pluggable I/O Cable Assemblies(81)

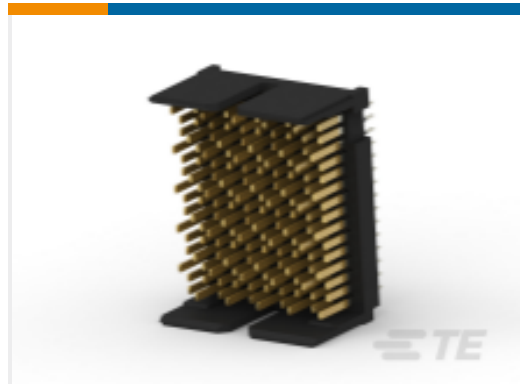


QSFP, QSFP+ & zQSFP+(432)

## Customers Also Bought



TE Part #2170872-1  
Z-PACK TYPE/C MALE HDR 55P



TE Part #1934937-1  
Tinman 5pr 10col open hdr assy



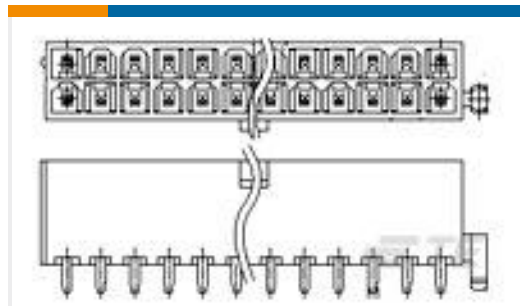
TE Part #2-1734774-1  
PCI EXP 3.1L 98 POS WHT 30u"



TE Part #2007850-1  
IMP100S,H,V5P10C,UG,DEW46,4,5



TE Part #2132423-1  
IMP100O,R,RA3P6C,RG,39



TE Part #3-1775099-2  
ATX PWR CONN 1 BDLK 8 POS



TE Part #5-2170790-4  
CAGE ASSY, 1X4, QSFP28, SPRING, HS, LP



TE Part #6-1658043-2  
MSB0.80RC-ASY080FL,GP,F,-TR



TE Part #6450834-1  
MBXL R/A HDR STR 1P/8S/1P



TE Part #2-2204910-5  
MBXLE R/A HEADER 4HDP + 92S + 4HDP

## Documents

### CAD Files

[3D PDF](#)

[3D](#)

### Customer View Model

[ENG\\_CVM\\_CVM\\_1-2308171-0\\_A.2d\\_dxf.zip](#)

English

### Customer View Model

[ENG\\_CVM\\_CVM\\_1-2308171-0\\_A.3d\\_igs.zip](#)



English

Customer View Model

[ENG\\_CVM\\_CVM\\_1-2308171-0\\_A.3d\\_stp.zip](#)

English

By downloading the CAD file I accept and agree to the [Terms and Conditions](#) of use.

**Product Specifications**

**Application Specification**

English