



T3212-Printer

TE Internal #: 1-2186500-1

Printers, Roll - Single Sided, 12 dpmm [300 dpi], T3212-Printer

[View on TE.com >](#)

Identification & Labeling > Printers, Software & Accessories > Printers



Printer Media Type: **Roll - Single Sided**

Print Head Resolution: **12 dpmm [300 dpi]**

Features

Product Type Features

Printer Power Supply Type	Mains Cable
---------------------------	-------------

Body Features

	352 oz
--	--------

Dimensions

Product Weight	10 kg
----------------	-------

Printer/Label Features

Print Width (Max)	105.7 mm[4.16 in]
Printer Type	Thermal Transfer
Printer Media Type	Roll - Single Sided
Print Head Resolution	12 dpmm[300 dpi]

Other

Media Sensor Type	Transmissive (Adjustable)
-------------------	---------------------------

Product Compliance

[For compliance documentation, visit the product page on TE.com>](#)

EU RoHS Directive 2011/65/EU	Compliant
EU ELV Directive 2000/53/EC	Compliant
China RoHS 2 Directive MIIT Order No 32, 2016	No Restricted Materials Above Threshold
EU REACH Regulation (EC) No. 1907/2006	Current ECHA Candidate List: JUNE 2023 (235) Candidate List Declared Against: JUN 2020 (209)

Does not contain REACH SVHC

Halogen Content

Low Halogen - Br, Cl, F, I < 900 ppm per homogenous material. Also BFR/CFR/PVC Free

Solder Process Capability

Not applicable for solder process capability

Product Compliance Disclaimer

This information is provided based on reasonable inquiry of our suppliers and represents our current actual knowledge based on the information they provided. This information is subject to change. The part numbers that TE has identified as EU RoHS compliant have a maximum concentration of 0.1% by weight in homogenous materials for lead, hexavalent chromium, mercury, PBB, PBDE, DBP, BBP, DEHP, DIBP, and 0.01% for cadmium, or qualify for an exemption to these limits as defined in the Annexes of Directive 2011/65/EU (RoHS2). Finished electrical and electronic equipment products will be CE marked as required by Directive 2011/65/EU. Components may not be CE marked. Additionally, the part numbers that TE has identified as EU ELV compliant have a maximum concentration of 0.1% by weight in homogenous materials for lead, hexavalent chromium, and mercury, and 0.01% for cadmium, or qualify for an exemption to these limits as defined in the Annexes of Directive 2000/53/EC (ELV). Regarding the REACH Regulation, the information TE provides on SVHC in articles for this part number is based on the latest European Chemicals Agency (ECHA) 'Guidance on requirements for substances in articles' posted at this URL: <https://echa.europa.eu/guidance-documents/guidance-on-reach>

Compatible Parts



TE Part # CAT-T3437-T548
TMS-SCE Military Grade Sleeves



TE Part # CAT-T3437-R819
RPS Commercial Grade Sleeves



TE Part # CAT-T3437-H85999A
HT-SCE High Temperature Sleeves



TE Part # CAT-T3437-Z614
Fluid Resistant Sleeves, ZHD-SCE



TE Part # CAT-T3437-H647A
HLX-NEL Low Fire Hazard Markers



TE Part # CAT-T3437-D1
D-SCE Fluid Resistant Sleeves



TE Part # CAT-T3437-H85999
High Temperature Markers, HTCM-SCE-TP



TE Part # CAT-T3437-H647
HLX Low Fire Hazard Markers



TE Part # CAT-T3437-H99
HX-SCE Low Fire Hazard Sleeves



TE Part # CAT-T3437-SB59
Self Laminating Vinyl Labels, SBP



TE Part # CAT-T3437-C6298
CM-SCE-TP Military Grade Markers



TE Part # CAT-T3437-H648A
HMM High Tack Metalized Polyester Labels



TE Part # CAT-T3437-SP1
SP Self Laminating Polyester Labels



TE Part # CAT-T3437-W919
WP White Polyester Labels



TE Part # CAT-T3437-N2393
NC Nylon Cloth Labels



TE Part # CAT-T3437-T548A
Military Grade Sleeves TMS-SCE-2X



TE Part # CAT-T3437-C83997
CP Clear Polyester Labels



TE Part # CAT-L1126-P689
Thermal Transfer Printable Panel Labels

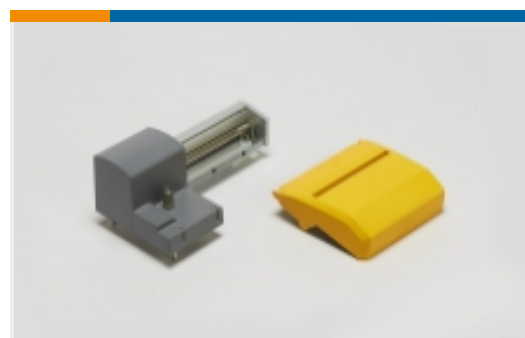


TE Part # CAT-C7679-H85999
Continuous Tube High Temperature HT-CT



TE Part # CAT-C7679-R819
Continuous Tube Commercial Grade RPS-CT

Also in the Series | T3212-Printer



Printer Accessories(17)

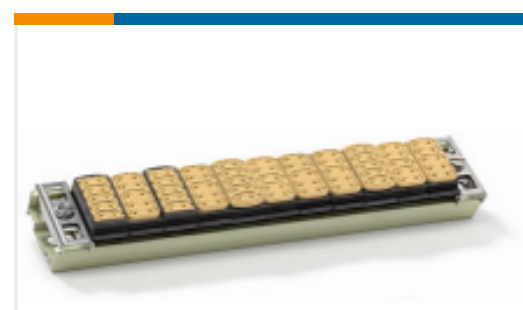


Printers(2)

Customers Also Bought



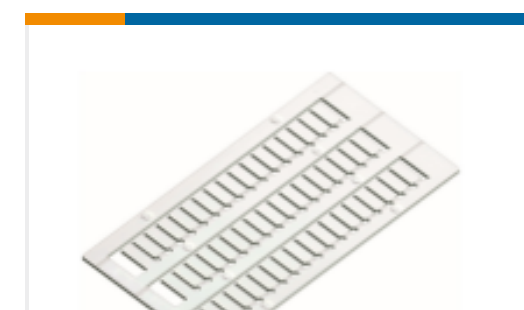
TE Part #9-1625984-7
HSA50 R33 5%



TE Part #ZPF00000000020160
FMJ 11E 20-11 G



TE Part #1SNA164519R2400
BAR



TE Part #1SNA234600R1000
RC810TT



TE Part #K1142223
Limit switch G12-232-D



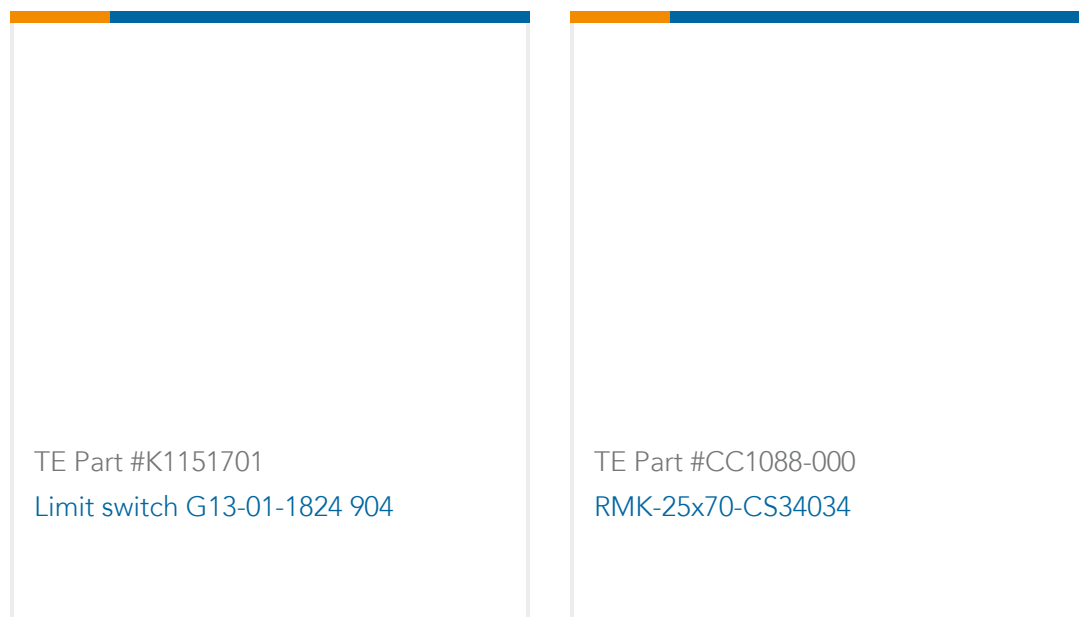
TE Part #1-2344491-1
KTHV-ST3652-CLAMP-551



TE Part #ZPF00000000011575
BJE 53



TE Part #1SNA195212R1000
M6/8.STP



Documents

Product Drawings

T3212-PRINTER

English

Datasheets & Catalog Pages

T3212 printer

English

TT PRINTER ACCESSORIES

English

PRINTER FAQ

English

T3212 AND T3224 THERMAL TRANSFER PRINTERS

English

Product Specifications

T3212_T3224 Quick Start Guide

English

T3200 Printer Printhead Replacement

English

PRINthead SETUP FOR T3212 & T3224 PRINTERS

English

INSTRUCTIONS FOR LEFT HAND JUSTIFIED PRODUCT GUIDES, FITTED TO THE TE3124 & TE3112

English

T3212 T3224 Printer Illustrated Parts List

English

IDENTIFICATION PRINTER PRODUCT RIBBON MATRIX

English

Instruction Sheets

Instruction Sheet (non U.S.)

English

Agency Approvals

Agency Approval Document

English



[Agency Approval Document](#)

English

[Agency Approval Document](#)

English

[Agency Approval Document](#)

English

[Agency Approval Document](#)

English

[Agency Approval Document](#)

English