



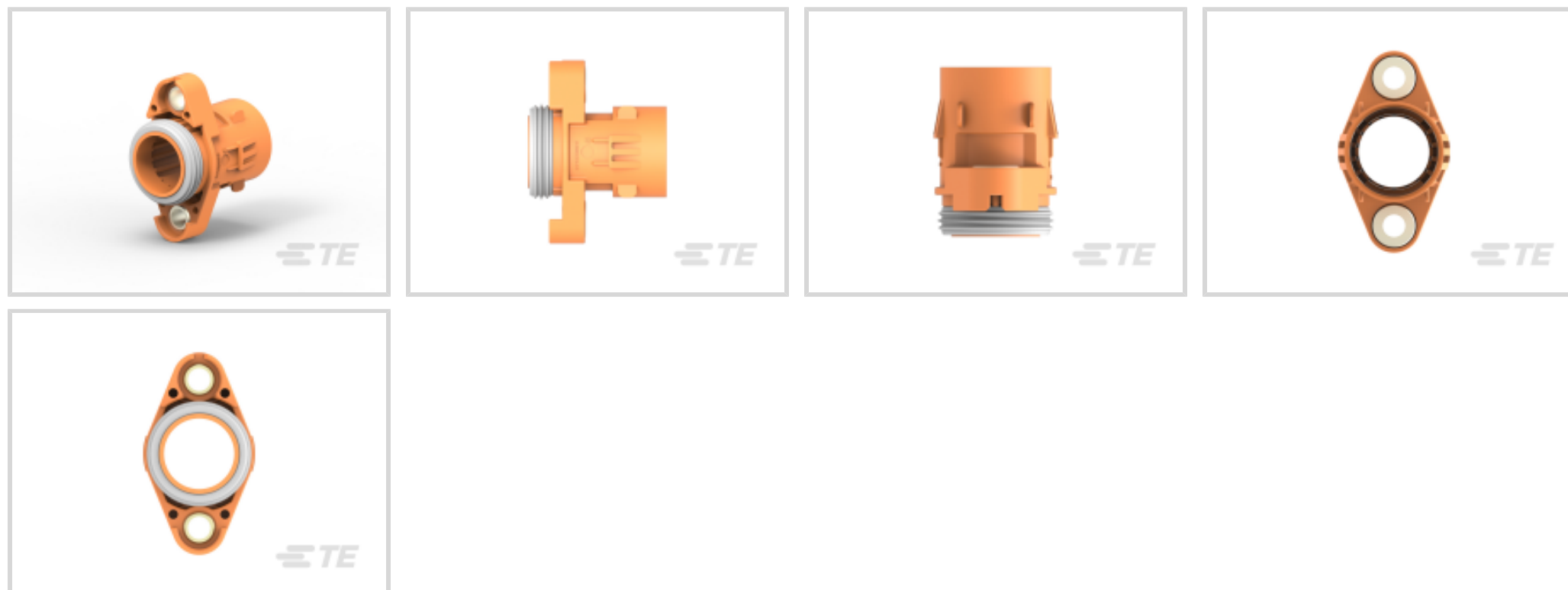
**IPT / APT**

TE Internal #: 1-1991226-2

Housing for Male Terminals, Wire-to-Device / Wire-to-Board, 1 Position, Sealable, Orange, Panel Mount, -40 – 284 °F [-40 – 140 °C], Key A, IPT / APT

[View on TE.com >](#)

Connectors > Automotive Connectors > Automotive Housings



Connector System: **Wire-to-Board, Wire-to-Device**

Number of Positions: **1**

Connector & Housing Type: **Housing for Male Terminals**

Sealable: **Yes**

Number of Rows: **1**

**Features**

**Product Type Features**

Mixed & Hybrid Connector	No
Connector Shape	Circular
Connector System	Wire-to-Board, Wire-to-Device
Connector & Housing Type	Housing for Male Terminals
Sealable	Yes

**Configuration Features**

Number of Positions	1
Number of Rows	1

**Electrical Characteristics**

Operating Voltage	850 VAC
Nominal Voltage Architecture	850 V

**Body Features**

Cable Exit Angle	180°
Primary Product Color	Orange



Connector & Keying Code	A
-------------------------	---

### Mechanical Attachment

Terminal Position Assurance	No
-----------------------------	----

Strain Relief	With
---------------	------

Mating Alignment Type	Keyed
-----------------------	-------

Mating Alignment	With
------------------	------

Connector Mounting Type	Panel Mount
-------------------------	-------------

### Housing Features

Housing Material	PA GF
------------------	-------

### Dimensions

Connector Height	31.2 mm[1.23 in]
------------------	------------------

Product Width	42.4 mm[1.67 in]
---------------	------------------

Product Length	56.1 mm[2.21 in]
----------------	------------------

### Usage Conditions

Operating Temperature (Max)	70 °C, 80 °C, 85 °C, 90 °C, 100 °C, 105 °C, 110 °C, 120 °C, 125 °C, 130 °C, 140 °C[158 °F][167 °F][176 °F][185 °F][194 °F][212 °F][221 °F][230 °F][248 °F][257 °F][266 °F][284 °F]
-----------------------------	--

Operating Temperature Range	-40 – 140 °C[-40 – 284 °F]
-----------------------------	----------------------------

### Industry Standards

Degree of Protection	IP6K9K
----------------------	--------

### Packaging Features

Packaging Quantity	144
--------------------	-----

Packaging Method	Tray
------------------	------

### Other

Serviceable	No
-------------	----

Connector Position Assurance Capable	No
--------------------------------------	----

### Product Compliance

[For compliance documentation, visit the product page on TE.com>](#)

EU RoHS Directive 2011/65/EU	Compliant with Exemptions
------------------------------	---------------------------

EU ELV Directive 2000/53/EC	Compliant with Exemptions
-----------------------------	---------------------------

China RoHS 2 Directive MIIT Order No 32, 2016	Restricted Materials Above Threshold
---	--------------------------------------



EU REACH Regulation (EC) No. 1907/2006

Current ECHA Candidate List: JUNE 2023 (235)

Candidate List Declared Against: JUNE 2023 (235)

SVHC > Threshold:

Pb (3.5% in Component Part)

**Article Safe Usage Statements:**

Do not eat, drink or smoke when using this product. Wash thoroughly after handling. Recycle if possible and dispose of the article by following all applicable governmental regulations relevant to your geographic location.

Halogen Content

Low Halogen - Br, Cl, F, I < 900 ppm per homogenous material. Also BFR/CFR/PVC Free

Solder Process Capability

Not reviewed for solder process capability

**Product Compliance Disclaimer**

This information is provided based on reasonable inquiry of our suppliers and represents our current actual knowledge based on the information they provided. This information is subject to change. The part numbers that TE has identified as EU RoHS compliant have a maximum concentration of 0.1% by weight in homogenous materials for lead, hexavalent chromium, mercury, PBB, PBDE, DBP, BBP, DEHP, DIBP, and 0.01% for cadmium, or qualify for an exemption to these limits as defined in the Annexes of Directive 2011/65/EU (RoHS2). Finished electrical and electronic equipment products will be CE marked as required by Directive 2011/65/EU. Components may not be CE marked. Additionally, the part numbers that TE has identified as EU ELV compliant have a maximum concentration of 0.1% by weight in homogenous materials for lead, hexavalent chromium, and mercury, and 0.01% for cadmium, or qualify for an exemption to these limits as defined in the Annexes of Directive 2000/53/EC (ELV). Regarding the REACH Regulation, the information TE provides on SVHC in articles for this part number is based on the latest European Chemicals Agency (ECHA) 'Guidance on requirements for substances in articles' posted at this URL: <https://echa.europa.eu/guidance-documents/guidance-on-reach>

## Compatible Parts



TE Part # 1719826-7  
SINGLE WIRE SEAL,8MM HV



TE Part # 1-1991225-7  
PROTECTIVE COVER. IPT 16-50mm sq. CABLE D



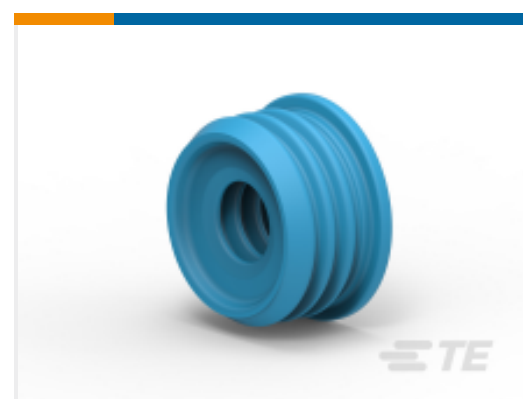
TE Part # 1-1991225-6  
PROTECTIVE COVER. IPT 16-50mm sq. CABLE D



TE Part # 3-2177380-1  
RING TONGUE, CONTACT



TE Part # 1-1991225-5  
PROTECTIVE COVER. IPT 16-50mm sq. CABLE D



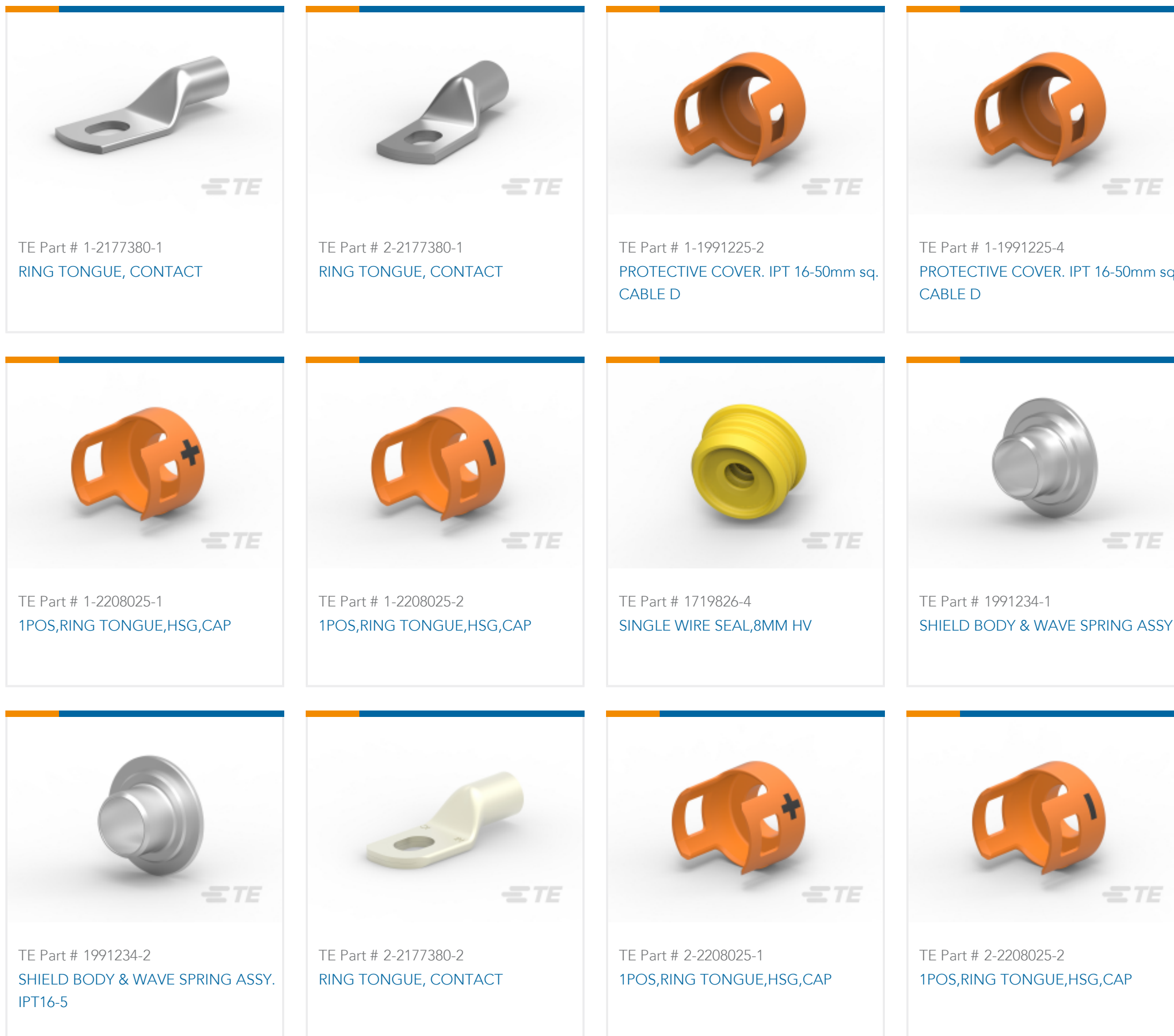
TE Part # 1719826-5  
SINGLE WIRE SEAL,8MM HV



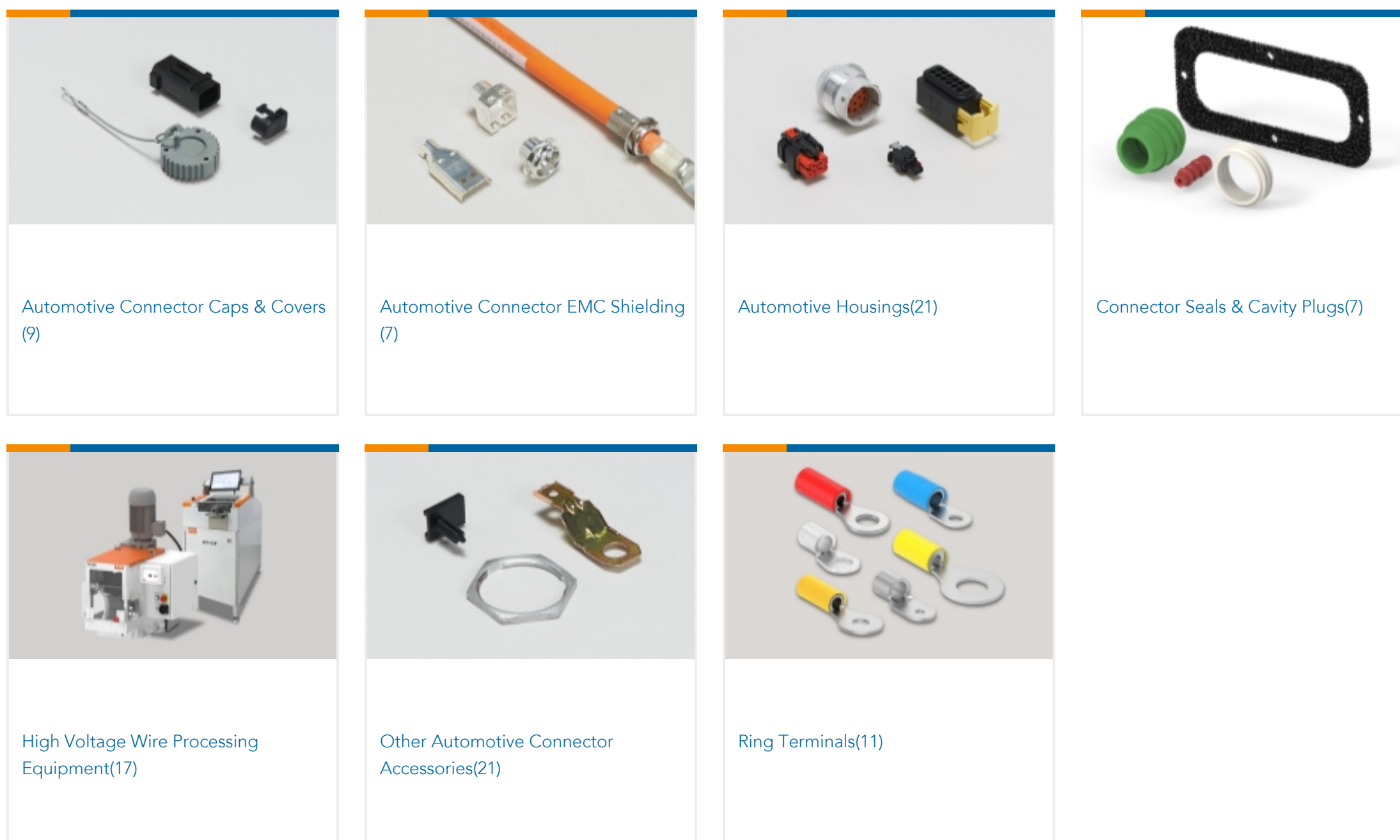
TE Part # 2141809-3  
CONTACT KIT, BODY AND SPRING,



TE Part # 1719826-6  
SINGLE WIRE SEAL,8MM HV



Also in the Series | IPT / APT



Customers Also Bought





TE Part #1379659-1  
8W PLUG HOUSING ASSY BLAC



TE Part #1-1564416-1  
8POS,TAB 1.6X0.6,TAB HSG,ASSY



TE Part #1-963736-1  
TIMER, RECEPTACLE AND TAB



TE Part #1379029-4  
4POS MOS REC



TE Part #1-2098922-5  
SDM,54P PLUG ASY,RHL,KEY A



TE Part #1-2141857-1  
AMP MCP 2.8, CONTACT



TE Part #2-2098922-5  
SDM,54P PLUG ASY,RHL,KEY B



TE Part #2310488-3  
PROTECTION COVER, V0



TE Part #929031-1  
JPT KONT-SICHERNG4P

## Documents

### Product Drawings

1 POS. RING TONGUE HOUSING ASSY. IPT 16-

English

### CAD Files

3D PDF

3D

Customer View Model

[ENG\\_CVM\\_CVM\\_1-1991226-2\\_D.2d\\_dxf.zip](#)

English

Customer View Model

[ENG\\_CVM\\_CVM\\_1-1991226-2\\_D.3d\\_igs.zip](#)

English

Customer View Model

[ENG\\_CVM\\_CVM\\_1-1991226-2\\_D.3d\\_stp.zip](#)

English

By downloading the CAD file I accept and agree to the [Terms and Conditions](#) of use.

### Product Specifications



## Application Specification

English