

CFH1100A1R6J ✓ ACTIVE

CGS | CGS CFH

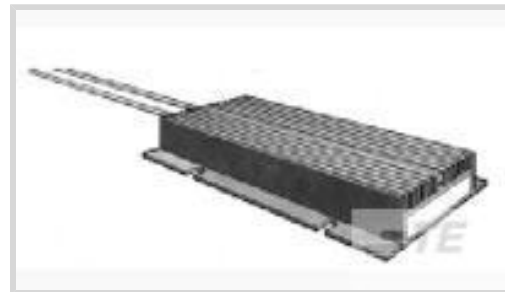
TE Internal #: 1-1623821-0

1.6 Ω , Wire Wound, Power Resistor, 320 x 95 x 30 mm, 2 Termination, Loose Piece - Box, 5 %, 2200 W, Flying Leads Termination, Chassis Mount, CGS CFH

[View on TE.com >](#)



Passive Components > Resistors > Chassis Mount Resistors > Power Wirewound Resistor: Mineral, CFH



Resistor Type: **Power Resistor**

Passive Component Dimensions: **320 x 95 x 30 mm**

Number of Terminations: **2**

Packaging Method: **Loose Piece - Box**

Passive Component Tolerance: **5 %**

[All Power Wirewound Resistor: Mineral, CFH \(17\)](#)

Features

Product Type Features

Resistor Type	Power Resistor
Element Type	Wire Wound

Configuration Features

Number of Resistors	1
---------------------	---

Electrical Characteristics

Voltage Rating	4000 V
Passive Component Tolerance	5 %
Resistance Class	Up to 1k Ω
Resistance Value	1.6 Ω
Power Rating	2200 W

Termination Features

Number of Terminations	2
Chassis Mount Resistor Termination Type	Flying Leads

Mechanical Attachment

Chassis Mount Resistor Mount Style	Chassis Mount
------------------------------------	---------------

Dimensions



Passive Component Dimensions	320 x 95 x 30 mm
------------------------------	------------------

Packaging Features

Packaging Method	Loose Piece - Box
------------------	-------------------

Product Compliance

[For compliance documentation, visit the product page on TE.com>](#)

EU RoHS Directive 2011/65/EU	Compliant
EU ELV Directive 2000/53/EC	Compliant
China RoHS 2 Directive MIIT Order No 32, 2016	No Restricted Materials Above Threshold
EU REACH Regulation (EC) No. 1907/2006	Current ECHA Candidate List: JUNE 2023 (235) Candidate List Declared Against: JUNE 2023 (235) Does not contain REACH SVHC
Halogen Content	Low Halogen - Br, Cl, F, I < 900 ppm per homogenous material. Also BFR/CFR/PVC Free
Solder Process Capability	Not applicable for solder process capability

Product Compliance Disclaimer

This information is provided based on reasonable inquiry of our suppliers and represents our current actual knowledge based on the information they provided. This information is subject to change. The part numbers that TE has identified as EU RoHS compliant have a maximum concentration of 0.1% by weight in homogenous materials for lead, hexavalent chromium, mercury, PBB, PBDE, DBP, BBP, DEHP, DIBP, and 0.01% for cadmium, or qualify for an exemption to these limits as defined in the Annexes of Directive 2011/65/EU (RoHS2). Finished electrical and electronic equipment products will be CE marked as required by Directive 2011/65/EU. Components may not be CE marked. Additionally, the part numbers that TE has identified as EU ELV compliant have a maximum concentration of 0.1% by weight in homogenous materials for lead, hexavalent chromium, and mercury, and 0.01% for cadmium, or qualify for an exemption to these limits as defined in the Annexes of Directive 2000/53/EC (ELV). Regarding the REACH Regulation, the information TE provides on SVHC in articles for this part number is based on the latest European Chemicals Agency (ECHA) 'Guidance on requirements for substances in articles' posted at this URL: <https://echa.europa.eu/guidance-documents/guidance-on-reach>

Compatible Parts

 <p>TE Part # CAT-C339-C339 Power Wirewound Resistor: Mineral, CFH</p>	 <p>TE Part # 2-1623821-8 CFH 1100 120R 5% 300MM LEADS</p>	 <p>TE Part # 2-1623821-7 CFH350 620R 5% 1000MM LEADS</p>
---	---	--

Also in the Series | CGS CFH



Chassis Mount Resistors(21)

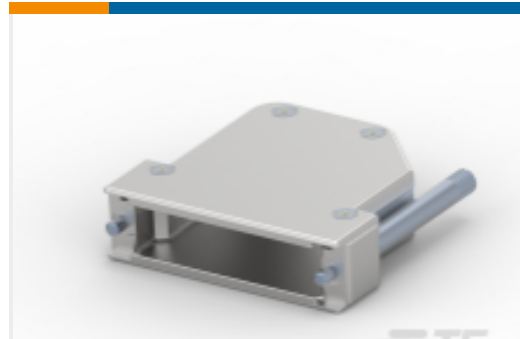
Customers Also Bought



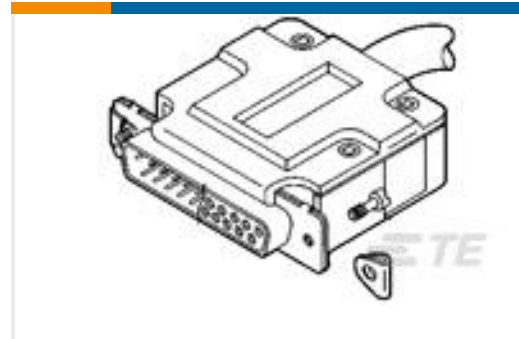
TE Part #1-2308340-1
FULL METAL HOODS SIZE 1



TE Part #1-2308272-1
CABLE CLAMPS (CASE RAW)



TE Part #1-2308342-5
FULL METAL HOODS SIZE 3-5 (RAW)



TE Part #5207908-1
STRAIN RELIEF W/SCREW RET KIT



TE Part #1757819-3
AMPLIMITE,ASY,PLUG,STD,109,ZN,3



TE Part #1757819-4
AMPLIMITE,ASY,PLUG,STD,109,ZN,4



TE Part #1757824-5
AMPLIMITE,ASY,RCPT,STD,90,ZN,5



TE Part #1-2176443-0
HCF110 100W 330R 5% LEAD



TE Part #2176250-6
TJT 500W 6R8 5%

Documents

Product Drawings

[CFH 1100 1R6 5% 300mm Leads](#)

English

CAD Files

[3D PDF](#)

[3D](#)

[Customer View Model](#)

[ENG_CVM_CVM_1-1623821-0_C.2d_dxf.zip](#)



English

Customer View Model

[ENG_CVM_CVM_1-1623821-0_C.3d_igs.zip](#)

English

Customer View Model

[ENG_CVM_CVM_1-1623821-0_C.3d_stp.zip](#)

English

By downloading the CAD file I accept and agree to the [Terms and Conditions](#) of use.

Datasheets & Catalog Pages

[4-1773460-6_RESISTIVE_SOLUTIONS_RAIL](#)

English

[1309350_PASSIVE_COMPONENT](#)

English

[Aluminium_Housed_Power_Resistors-Type_CFH_Series](#)

English

[8-1773459-4_POWER_FILTERING_AND_RESISTIVE_SOLUTIONS_FOR_ELEVATORS_AND_ESCALATORS](#)

English