

REV. D

RECOMMENDED P.C. BOARD LAYOUT FOR PLCC

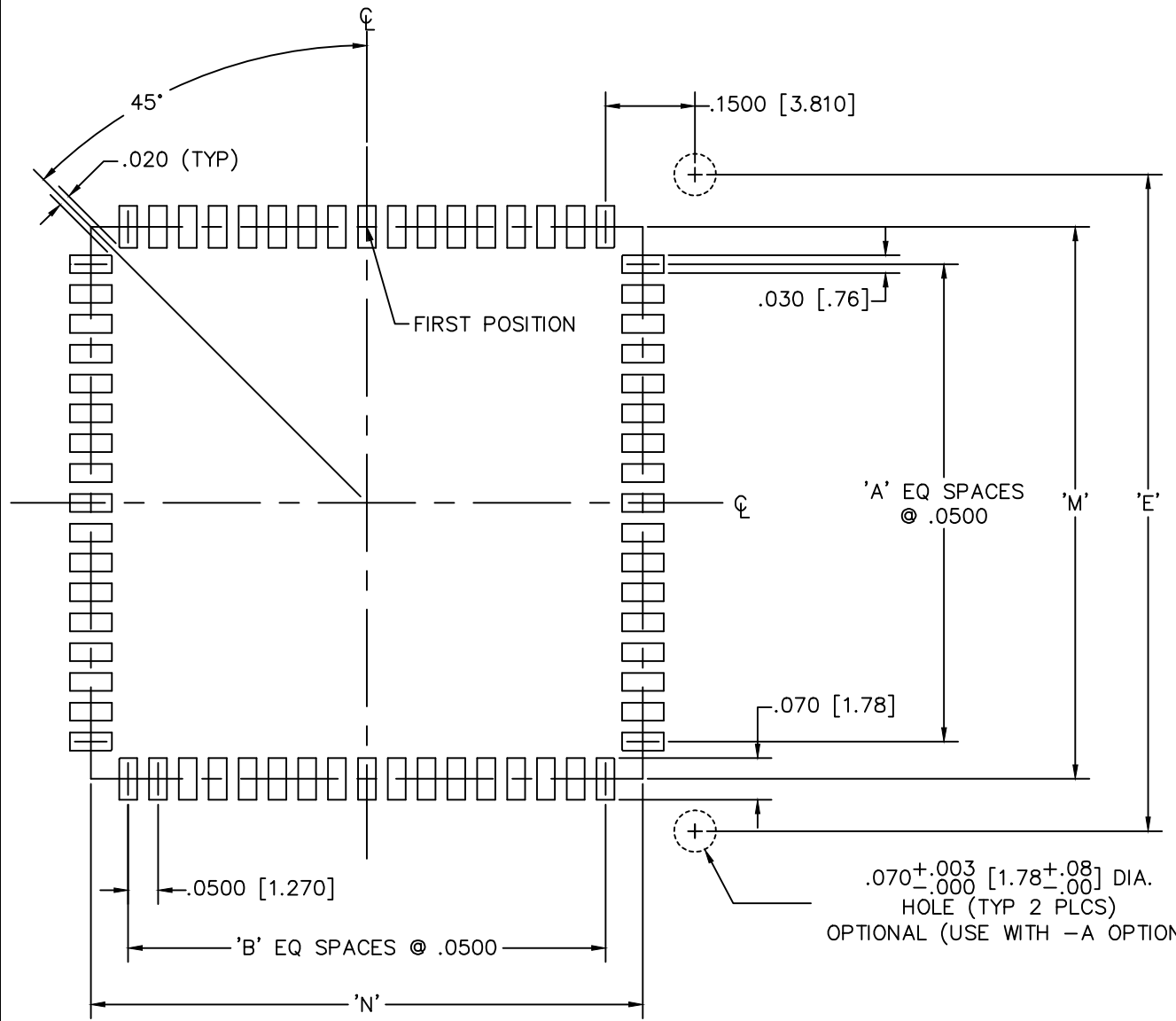


TABLE 1

'XX'	'A'	'B'	'M'	'N'	'E'
20	.04	.04	.325	.325	.500
28	.06	.06	.425	.425	.600
32	.08	.06	.525	.425	.700
44	.10	.10	.625	.625	.800
52	.12	.12	.725	.725	.900
68	.16	.16	.925	.925	1.100
84	.20	.20	1.125	1.125	1.300

.070^{+0.003}_{-.000} [1.78^{+0.08}_{-.00}] DIA.
 HOLE (TYP 2 PLCS)
 OPTIONAL (USE WITH -A OPTION)

MISC\MKTG\FOOTPRINT
PLCC

samtec

520 PARK EAST BLVD. NEW ALBANY, INDIANA 47150
 PHONE (812) 944-6733 P.O. BOX 1147